

FOR LEASE



2950 CHAD DRIVE | EUGENE, OREGON

NEW INDUSTRIAL SPACE 1,449 SF – 12,365 SF Available

Grade-Level Access | Build-to-Suit Office | Secure Facility
Located within the Reynolds Electric Headquarters Campus

LEASE RATE: \$0.85 NNN (NNN= estimated to be around \$.27 per SF)



TIM CAMPBELL
timc@campbellre.com
(541) 484-2214
Licensed in the State of Oregon

BILL NEWLAND
bill@campbellre.com
(541) 484-2214
Licensed in the State of Oregon

PROPERTY OVERVIEW

New industrial space available within the Reynolds Electric Headquarters campus. Available suites range from 1,449 SF to 12,365 SF and feature separate access, secured entry, grade-level loading, and the ability to construct office space to suit tenant requirements. Conveniently located in North Eugene with excellent access to major transportation corridors.

BUILDING FEATURES

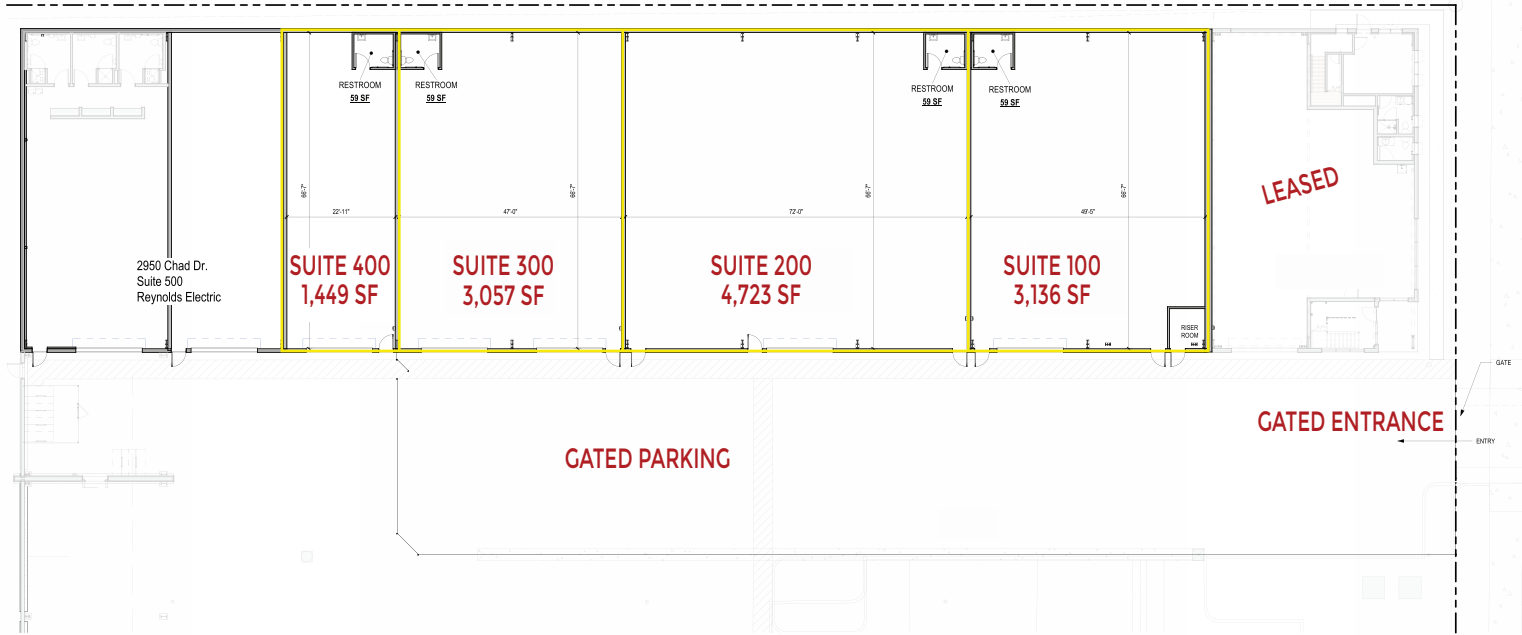
- 1,449 SF to 12,365 SF Available
- New Industrial Construction
- Grade-Level Access
- Build-to-Suit Office Available
- Secure Gated Facility
- On-Site Parking

ZONING: **E-1 Campus Employment Zone** - is the prime area where uses include **clean light manufacturing and distribution, R&D labs, and office** can live together in the same zoning.

Whether it is tech fabrication, advanced manufacturing, or product assembly, the location of this space is where innovation meets opportunity. Secure your company's space in Eugene's E-1 zone today.

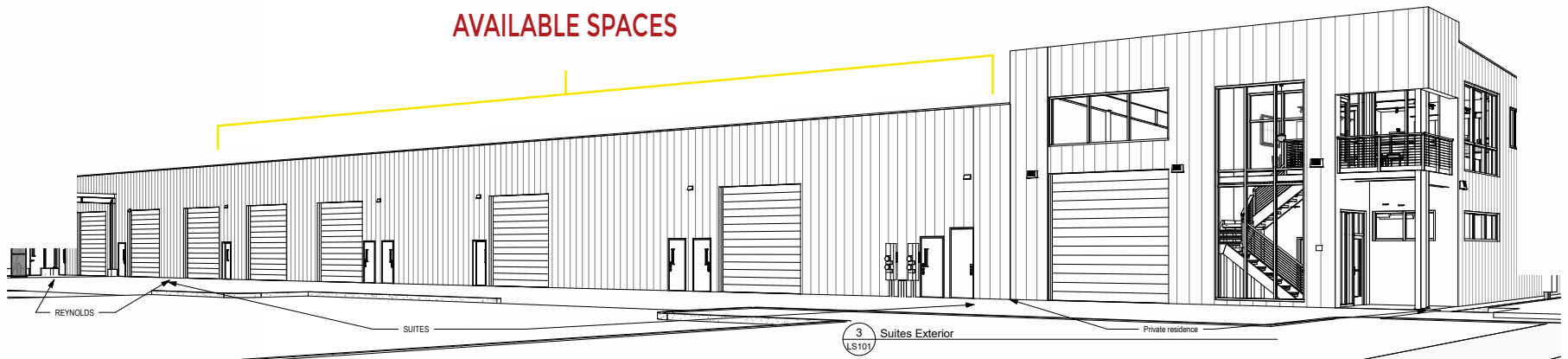


BUILDING SPACE PLAN

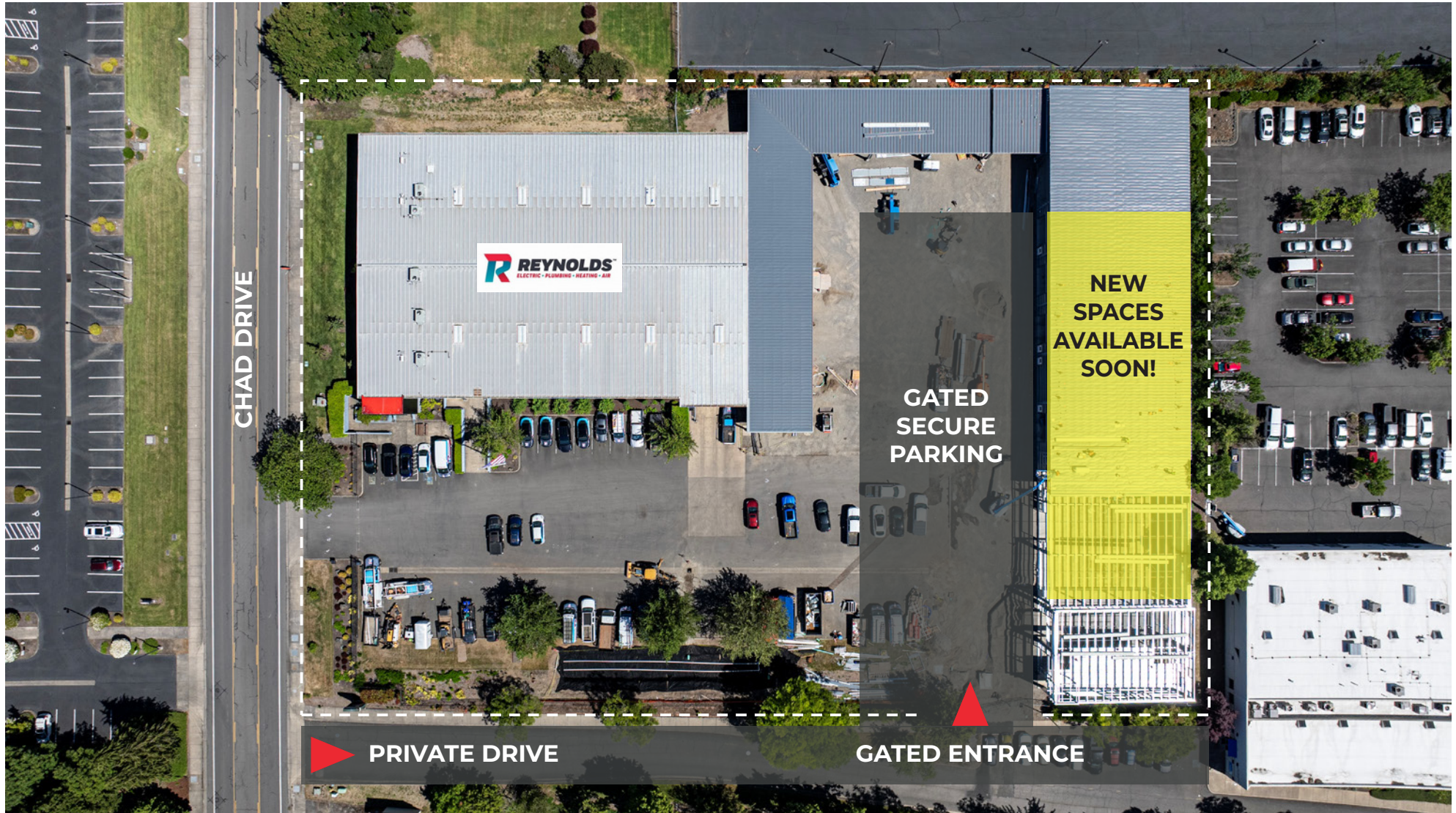


1,449 - 12,365 SF AVAILABLE

AVAILABLE SPACES

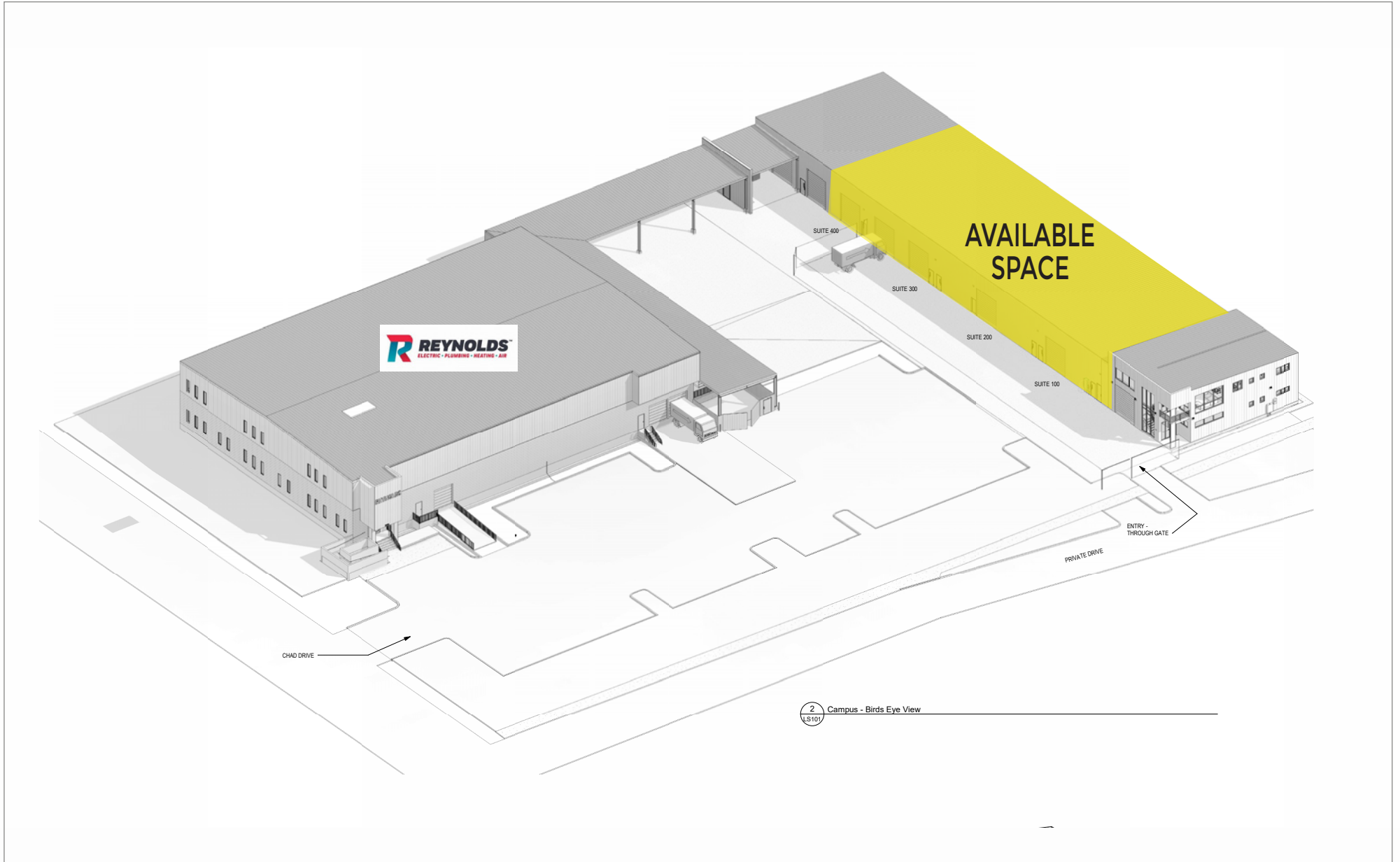


2590 CHAD DRIVE



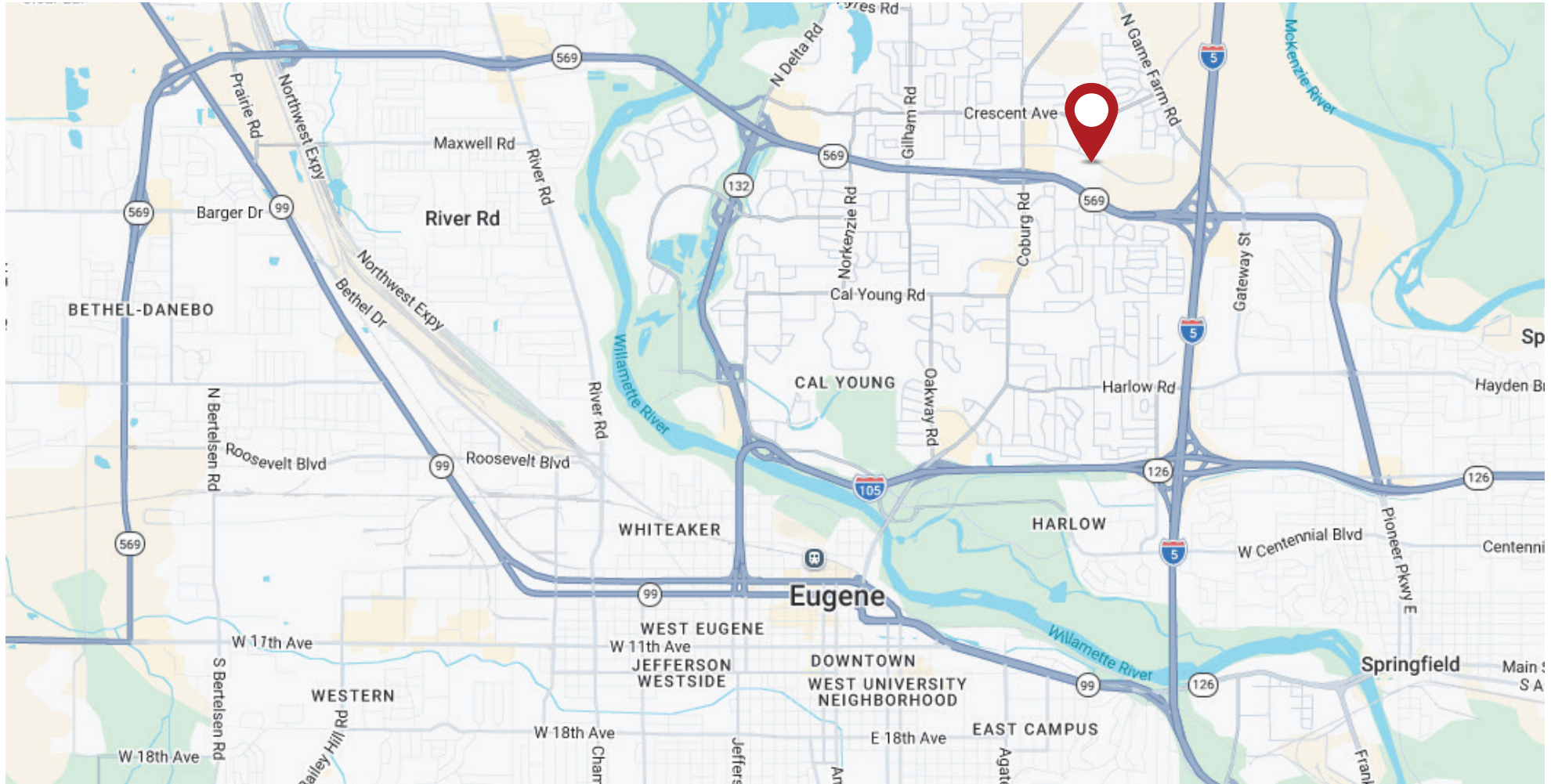
The information in this package was obtained from sources deemed reliable, and is not guaranteed by agent. Package is subject to change, error or omission, prior sale or lease, correction or withdrawal. Any party contemplating purchase is urged to conduct their own independent study and inspection.

PROPERTY SITE PLAN



PROPERTY LOCATION

Well-located industrial space with quick access to Beltline Highway and Interstate 5, offering efficient transportation links for manufacturing, warehousing, and distribution users.



The information in this package was obtained from sources deemed reliable, and is not guaranteed by agent. Package is subject to change, error or omission, prior sale or lease, correction or withdrawal. Any party contemplating purchase is urged to conduct their own independent study and inspection.