

FOR LEASE | 1,795 RENTABLE SQUARE FEET
15301 W. 87TH STREET PARKWAY, LENEXA

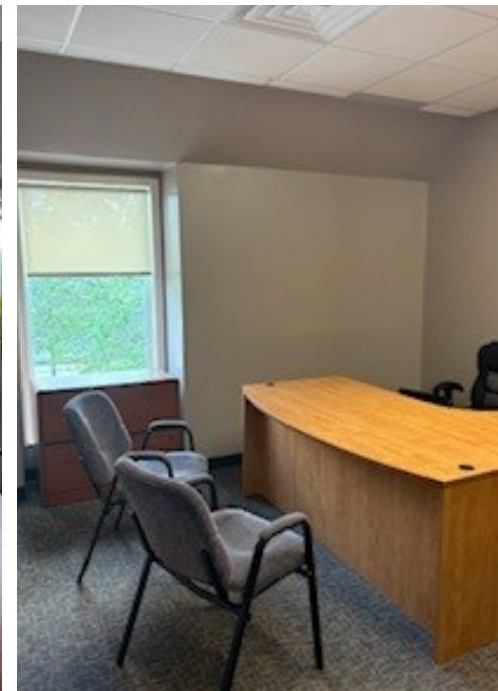
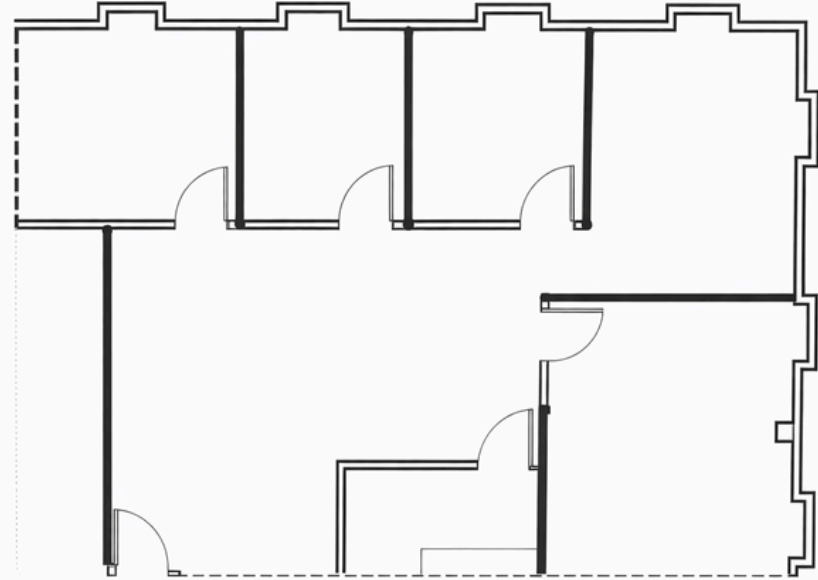


FOR LEASE | 1,795 RENTABLE SQUARE FEET

15301 W. 87TH STREET PARKWAY, LENEXA, KS

PROPERTY HIGHLIGHTS

- Prominent Office Bank Building
- Near Lenexa City Center
- Large Parking Lot
- 2nd floor offices with elevator
- Nicely finished office space
- Corner space with abundant windows
- Available August 2026
- Join other professional businesses
- \$22.50 per square foot full service



ANN JORDEN-SPENCER, CCIM

CELL: 913.205.5909

OFFICE: 913.384.6666

ANN@JACKJORDENREALESTATE.COM

Jack Jordan Real Estate, LLC