



New show suite



New elevators completed



Boardroom updated



Op. costs reduced



OFFICE SPACE ON MACLEOD TR. FOR LEASE

Centre 70

7015 Macleod Tr. SW, Calgary

1,336 sf – 13,474 sf



FOR MORE INFORMATION OR TO VIEW, PLEASE CONTACT:

Ian Robertson, ASSOCIATE

c: 403-860-2383 • d: 587-393-9332 • irobertson@barclaystreet.com

Murray Ion, VICE PRESIDENT, PARTNER

c: 403-797-3103 • d: 403-294-7179 • mion@barclaystreet.com

Hunter Snyder, ASSISTANT (UNLICENSED)

c: 587-227-2118 • d: 403-294-7205 • hsnyder@barclaystreet.com



LOCAL EXPERTISE MATTERS


New
show suite


New
elevators
completed


Boardroom
updated


Op. Costs
Reduced

- » Landmark location. Short walk to Chinook Centre and many other amenities in the immediate area.
- » Ample tenant parking and designated visitor parking stalls.
- » Chinook LRT station and numerous bus stops within short walking distance.
- » Very efficient floorplate with high ratio of windows to office space.
- » Medical and other professional services available in the building.
- » Tenant-specific intercom for after-hours access.



LEASE INFORMATION

AVAILABLE FOR LEASE:

- » 13,474 sq. ft. – Suite 200
- » 2,752 sq. ft. – Suite 218
- » 2,873 sq. ft. – Suite 603 **NEW SHOW SUITE**
- » 1,982 sq. ft. – Suite 600
- » 1,336 sq. ft. – Suite 700 **SHOW SUITE**
- » 9,106 sq. ft. – Penthouse suite 900

PARKING:

1:440 sq. ft. ratio; \$175/stall per mo rate

| | | | |
|-----------------------|------------|---------|-----------------------|
| OP. COSTS & TAXES: | Op. Costs: | \$13.52 | Total: \$16.95 (est.) |
| | Taxes: | \$3.43 | |

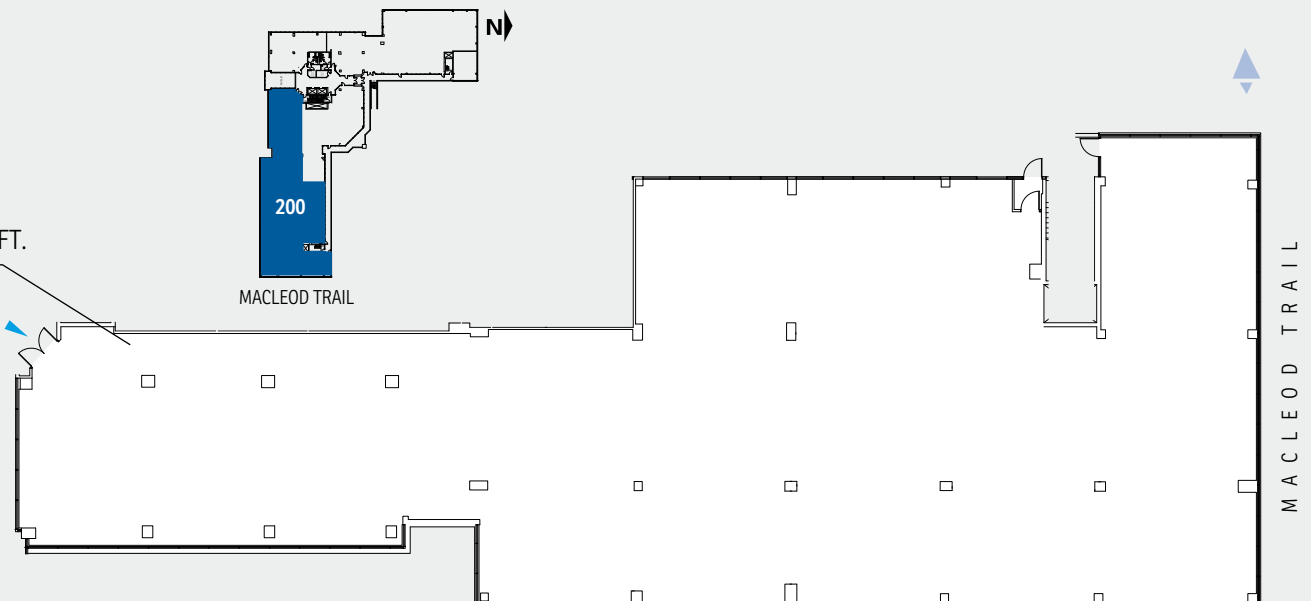
| | | |
|----------------|------------|--------------------|
| HVAC HOURS: | Mon.-Fri.: | 6:00 am to 9:00 pm |
| | Sat.-Sun.: | 8:00 am to 6:30 pm |

NET RENT: Market rate

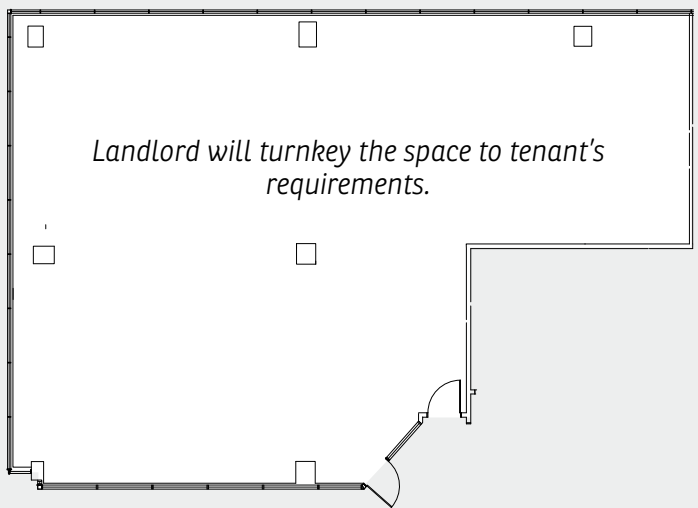
2
FLOOR

SUITE 200
13,474 SQ.FT.

- Easy-access second floor premises.
- High density work station office.
- High ratio of windows to office space.
- Predominant high exposure Macleod Trail signage available.



2 FLOOR

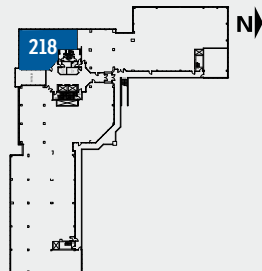


Landlord will turnkey the space to tenant's requirements.

Corner suite

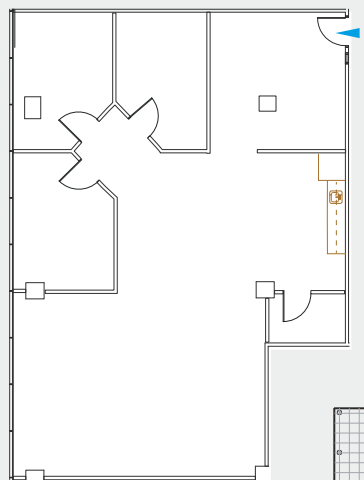
SUITE 218
2,752 SQ.FT.

- Landlord will turnkey the space to tenant's requirements.
- Excellent natural light.



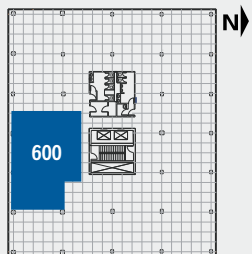
MACLEOD TRAIL

6 FLOOR

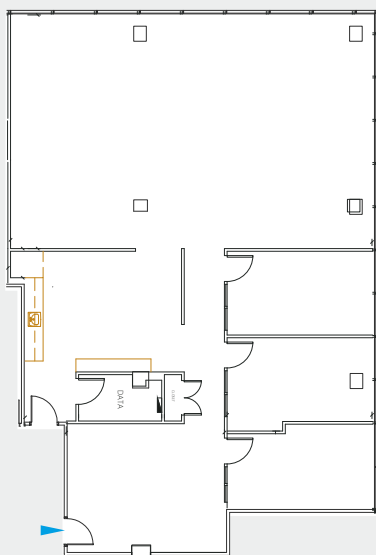


Move-in ready

SUITE 600
1,982 SQ.FT.



MACLEOD TRAIL

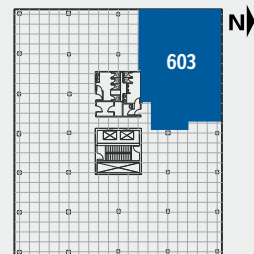


Corner suite City and mountain views Move-in ready

SUITE 603
2,873 SQ.FT.

NEW SHOW SUITE

- » New LED lighting
- » New commercial roller blinds
- » New paint
- » New carpet (TBD)



MACLEOD TRAIL



Suite 600



Suite 603

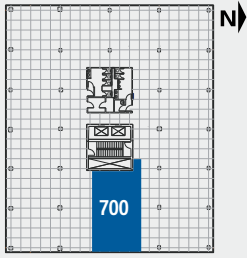


7 FLOOR

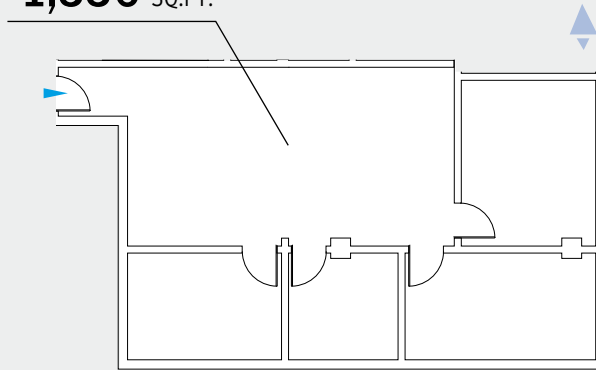
SHOW SUITE

SUITE 700

1,336 SQ.FT.



MACLEOD TRAIL



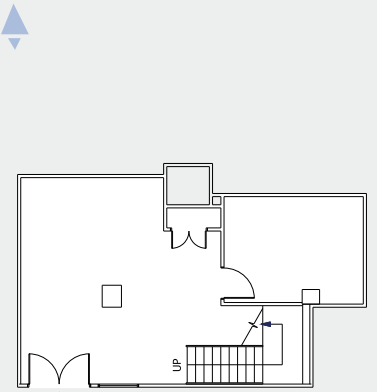
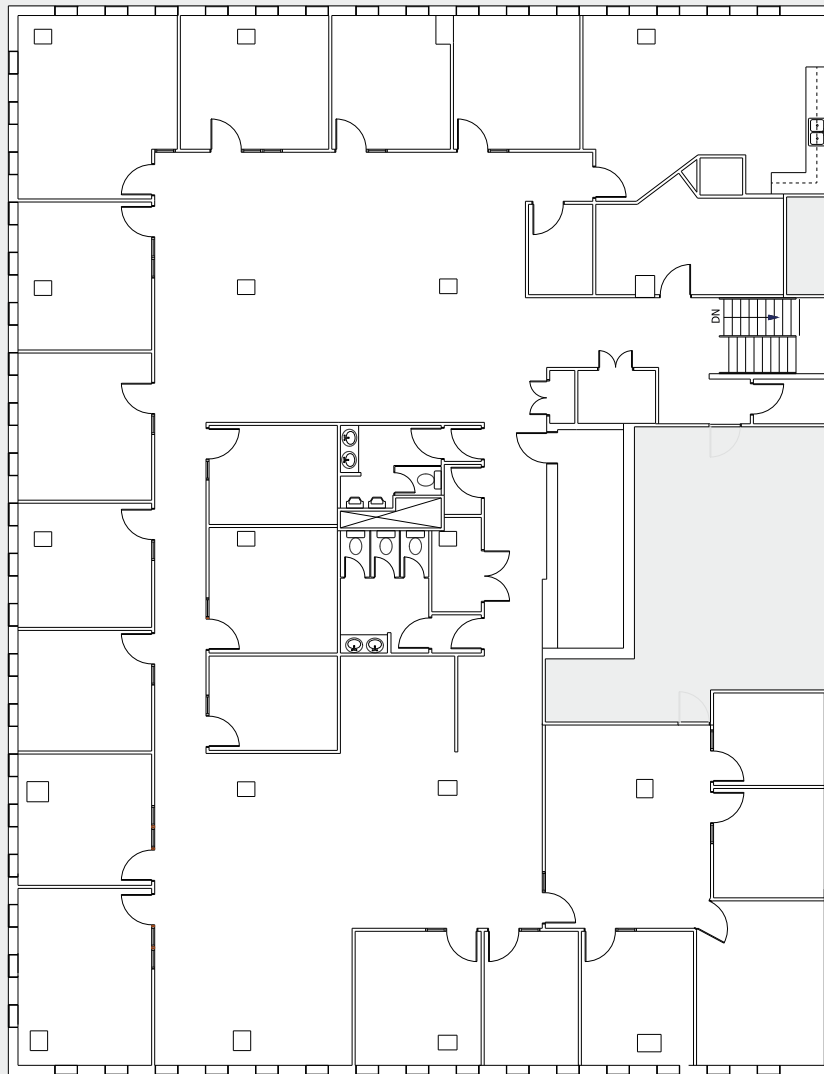
9 FLOOR

City and mountain views

PENTHOUSE SUITE 900

9,106 SQ.FT.

- Unique option with private washrooms
- Entrance from the 8th floor



Entrance to the premises is located on the 8th floor.

The information contained herein has been gathered from sources deemed reliable, but is not warranted as such and does not form any part of any future contract. This offering may be altered or withdrawn at any time without notice.

Copyright © 2026 Barclay Street Real Estate Ltd. All rights reserved.



LOCAL EXPERTISE MATTERS