

22720 WOODWARD AVENUE
FERNDALE, MICHIGAN

OFFICE/RETAIL FOR LEASE
500-650 Square Feet Available



**SIGNATURE
ASSOCIATES**
KNOW SIGNATURE | KNOW RESULTS



PROPERTY FEATURES

- Available Suites:
 - Suite 101: 500 SF - \$1700/month G
 - Suite 103: 520 SF - \$800/month G
 - Suite 201: 650 SF - \$1400/month G
 - Suite 204: 520 SF - \$800/month G
- Zoned CBD
- City parking
- Heat, air, water and electric included
- Prime location in the heart of Ferndale
- Contact broker for more details



For more information, please contact:

KRIS PAWLOWSKI
(248) 359 3801
kpawlowski@signatureassociates.com

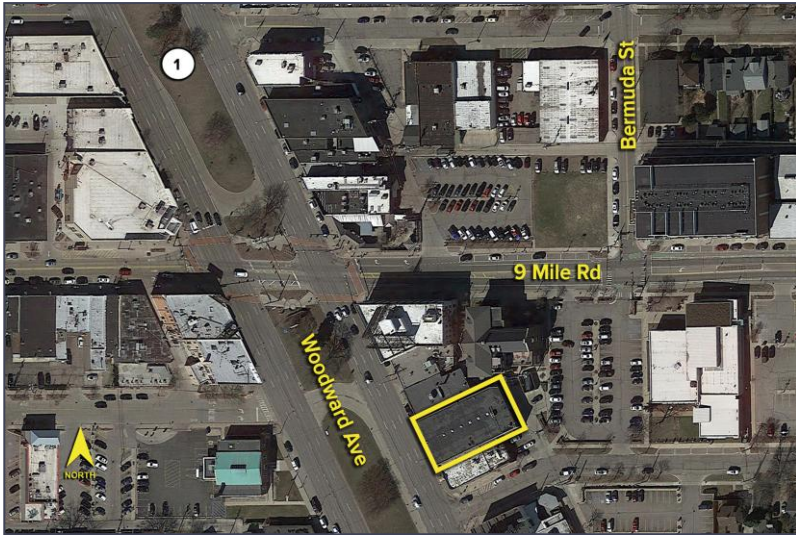
PETER VANDERKAAY
(248) 359 3837
pvanderkaay@signatureassociates.com

SIGNATURE ASSOCIATES
One Towne Square, Suite 1200
Southfield, MI 48076
www.signatureassociates.com

22720 Woodward Avenue – Ferndale, Michigan

Office/Retail For Lease

500-650
Square Feet
AVAILABLE



DEMOGRAPHICS

	POPULATION	MED. HH INCOME
1 MILE	16,263	\$80,017
3 MILE	145,130	\$65,730
5 MILE	390,526	\$58,357

TRAFFIC COUNTS (TWO-WAY)

50,700	Woodward Ave. S. of 9 Mile 2-Way
53,030	Woodward Ave. N. of 9 Mile 2-Way
25,951	9 Mile & Woodward Ave. 2-Way



For more information, please contact:

KRIS PAWLOWSKI
(248) 359 3801
kpawlowski@signatureassociates.com

PETER VANDERKAAY
(248) 359 3837
pvanderkaay@signatureassociates.com

SIGNATURE ASSOCIATES
One Towne Square, Suite 1200
Southfield, MI 48076
www.signatureassociates.com