



Industrial/Flex Space Available for Lease



9180 South Sandy Parkway, Suite C

Sandy, UT 84070 Building 5 (6,561 SQ. FT.)

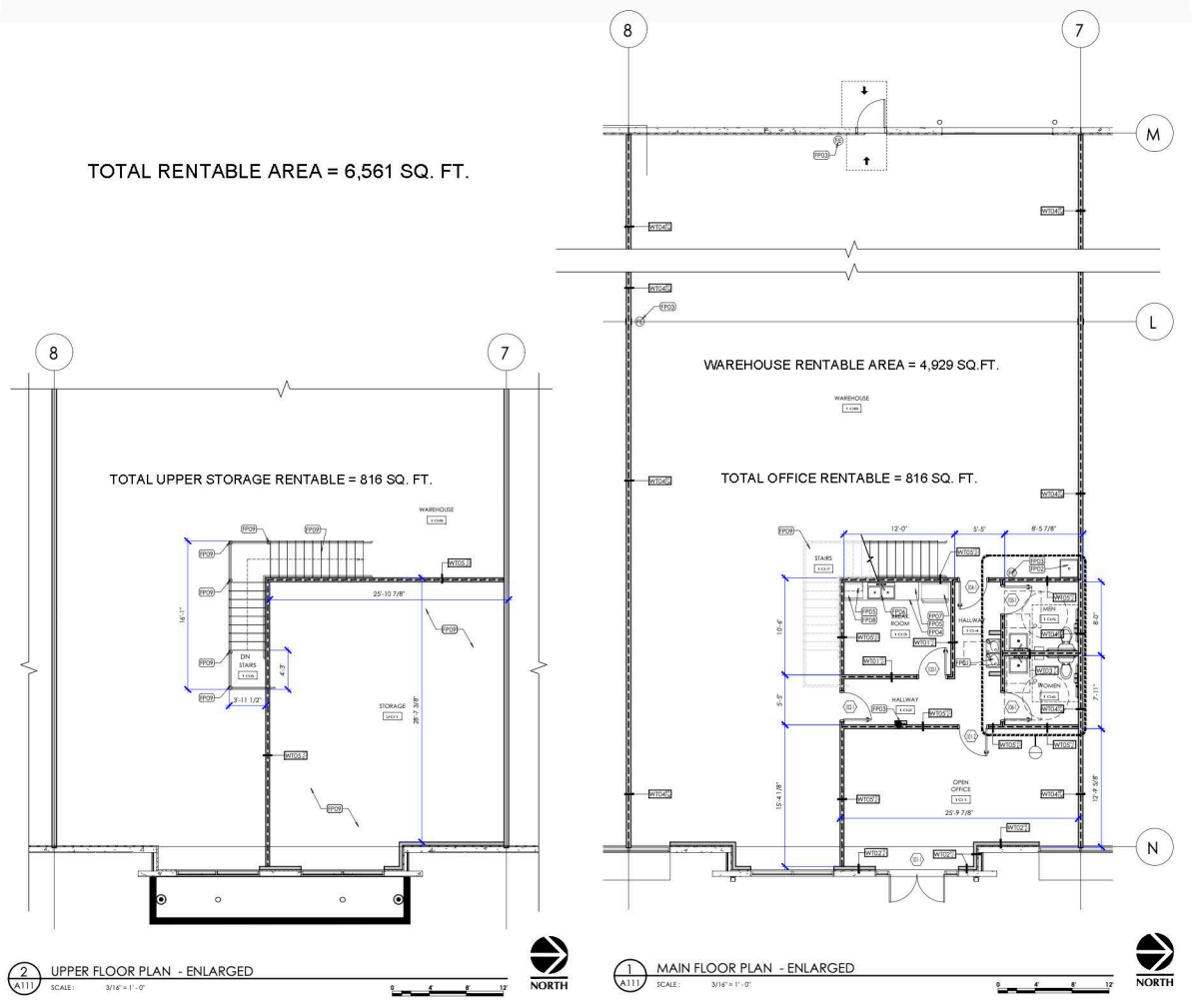
This space offers a combination of warehouse, professional conference spaces and private offices. This coveted location on Sandy Parkway (500 West) provides easy access to I-15 from 9000 South.

Available 11/1/26

- 6,561 SF, includes 806 SF Dedicated Office
- 1 Drive-In Bay
- Open Office
- Reception Area
- Break Room
- Private Restrooms
- Mountain Views
- Central Air and Heating

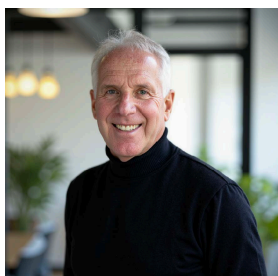


# Floorplan:



For additional information, please contact us:

Steven Urry  
801.541.1113  
urry@synergydevllc.com



Soren Urry  
435.503.0496  
soren@synergydevllc.com

