



# FREESTANDING RETAIL FOR LEASE

2324 SOUTH REDWOOD ROAD, WEST VALLEY CITY, UTAH 84119

**LEASE RATE: \$22.00 PSF NNN**



## PROPERTY INFORMATION

- ☑ 2,638 SF Retail With Drive-Thru
- ☑ 0.46 Acres
- ☑ Great Visibility On Redwood Road
- ☑ Zoned: C2
- ☑ Ample Parking: 30+ Parking Stalls
- ☑ Multi-Tenant Possibility
- ☑ Drive-Thru Capabilities

## DEMOGRAPHICS

	1 Mile	3 Miles	5 Miles
Population	4,657	94,023	345,46
Households	1,424	32,374	135,044
Avg. Household Income	\$62,770	\$68,063	\$79,178

## CONTACT US

**DEREK KLOPPER**  
✉ derek@cresutah.com

☎ 801.897.9264

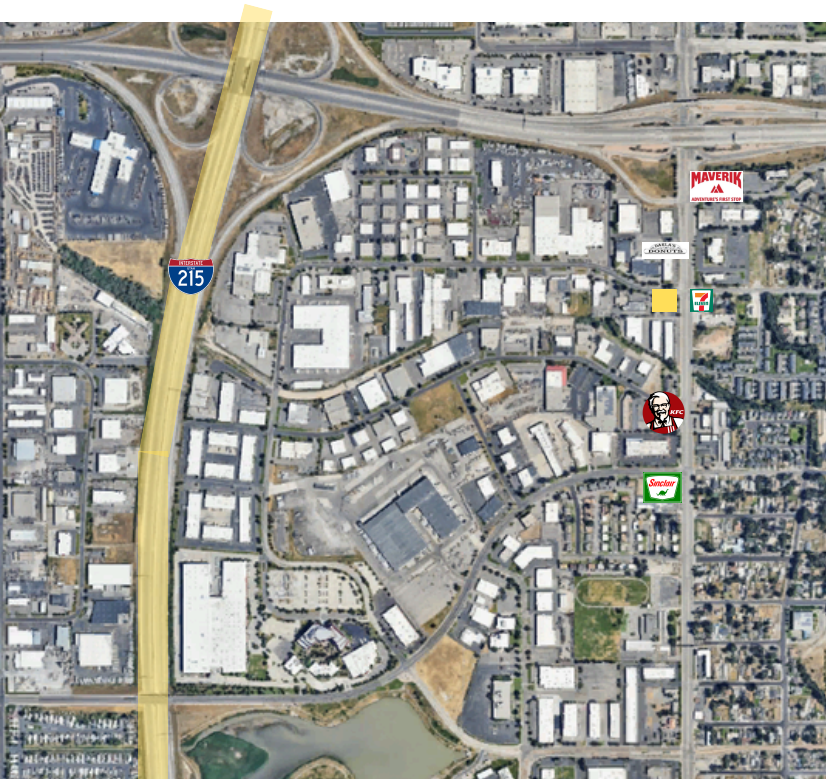
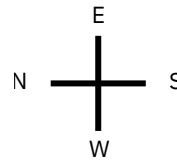
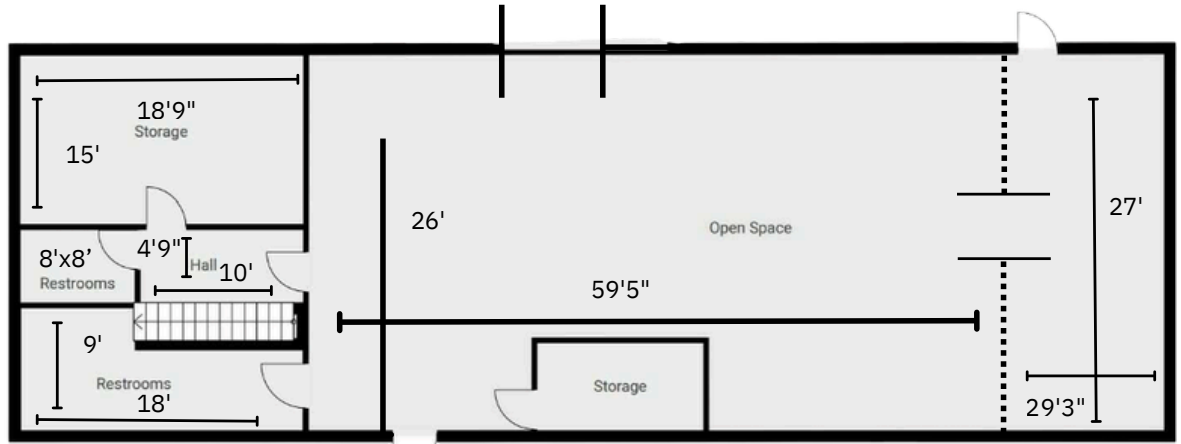
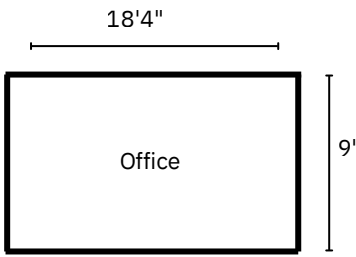
**COLTER SMITH**  
✉ colter@cresutah.com

☎ 801.755.8794 [www.cresutah.com](http://www.cresutah.com)

Call Us   
**801.876.6070**

# FREESTANDING RETAIL FOR LEASE

2324 SOUTH REDWOOD ROAD, WEST VALLEY CITY, UT 84119



This information is given with the understanding that all negotiations and/or real estate activity related to the property described above shall be conducted through this CRES office. The above information while not guaranteed, was obtained from sources we believe to be reliable.

## CONTACT US

**DEREK KLOPFER**

✉ derek@cresutah.com ☎ 801.897.9264

**COLTER SMITH**

✉ colter@cresutah.com ☎ 801.755.8794 🌐 www.cresutah.com

Call Us  
**801.876.6070** 📞