

# 95 BOUTWELL ST SAN FRANCISCO, CA

# OFFERING MEMORANDUM

---



JEFFREY IDA  
Founding Principal  
(415) 828-7679  
jjda@lee-associates.com  
License ID# 01826381

DOUG OGARD  
Vice President  
(415) 842-1889  
dogard@lee-associates.com  
License ID# 02103324

BRENDAN GALLAGHER  
Founding Principal  
(760) 846-1736  
bgallagher@lee-associates.com  
License ID# 02047890

CHRIS SCHOFIELD  
Principal  
(510) 903-7608  
cschofield@lee-associates.com  
License ID# 01326198

# PROPERTY DETAILS



ASKING PRICE  
**\$2,900,000**

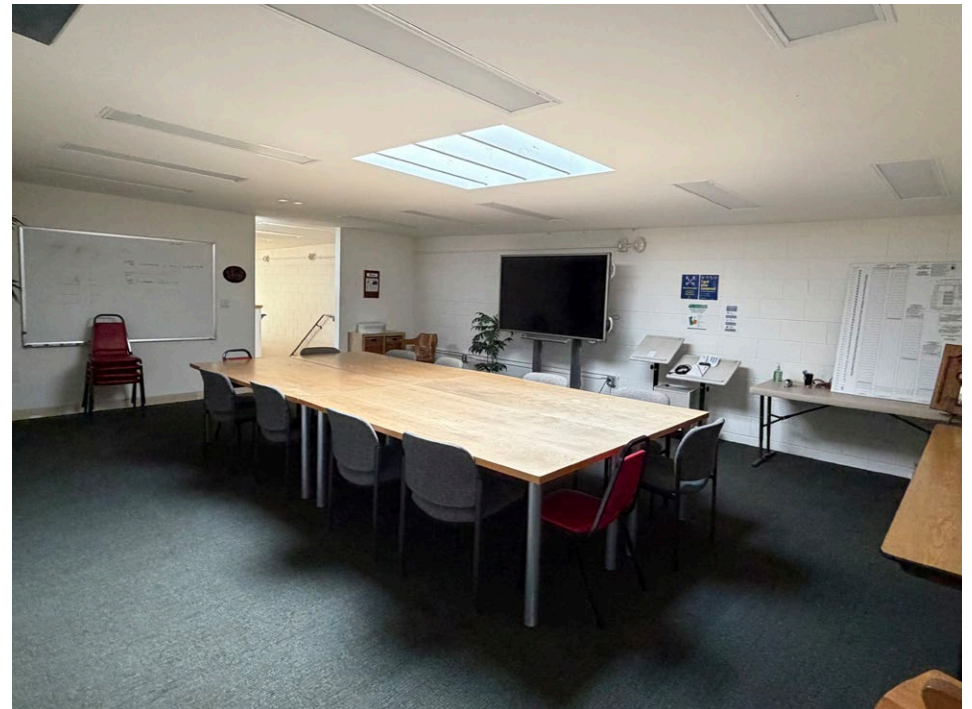
BUILDING SIZE 8,480 SF  
(Potential 50/50 Office/Warehouse Configuration)

POWER 200 Amp/3 Phase/4 Wire\*

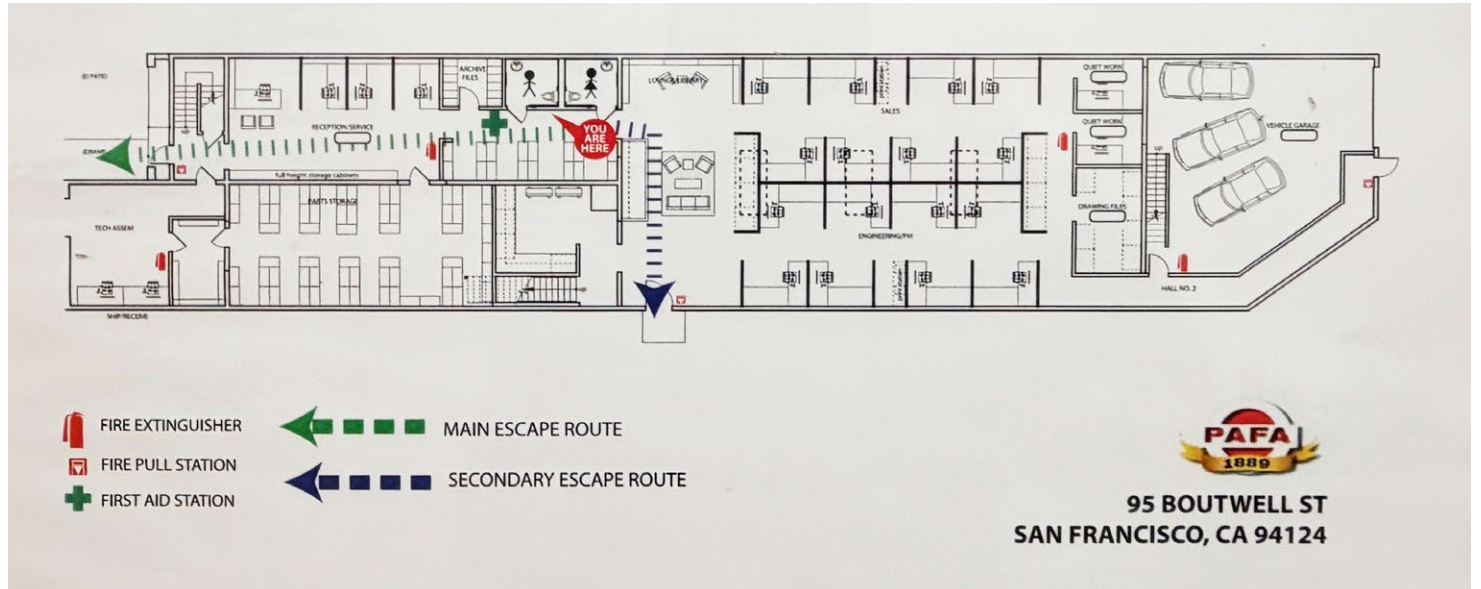
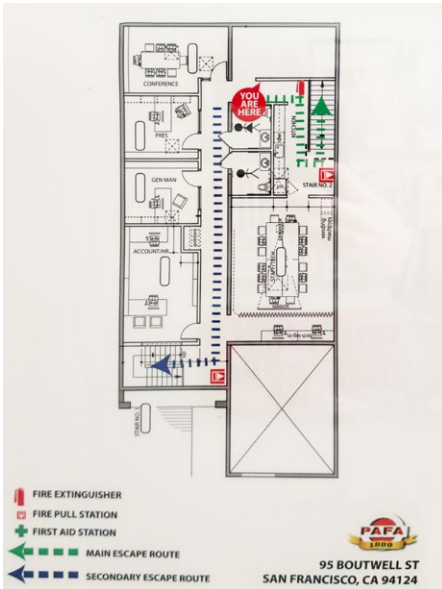
ZONING PDR-2

FEATURES Seismic Upgrade Completed in 2009  
1 Dock High Door  
1 Grade Level Door  
Renovated Two-Story Office

*\*Buyer to confirm*



# 95 BOUTWELL ST | SAN FRANCISCO, CA



# AERIAL VIEW





# NON-ENDORSEMENT & DISCLAIMER NOTICE



## CONFIDENTIALITY & DISCLAIMER

The information contained in the following Marketing Brochure is proprietary and strictly confidential. It is intended to be reviewed only by the party receiving it from Lee & Associates and should not be made available to any other person or entity without the written consent of Lee & Associates. This Marketing Brochure has been prepared to provide summary, unverified information to prospective purchasers, and to establish only a preliminary level of interest in the subject property. The information contained herein is not a substitute for a thorough due diligence investigation. Lee & Associates has not made any investigation, and makes no warranty or representation, with respect to the income or expenses for the subject property, the future projected financial performance of the property, the size and square footage of the property and improvements, the presence or absence of contaminating substances, PCB's or asbestos, the compliance with State and Federal regulations, the physical condition of the improvements thereon, or the financial condition or business prospects of any tenant, or any tenant's plans or intentions to continue its occupancy of the subject property. The information contained in this Marketing Brochure has been obtained from sources we believe to be reliable; however, Lee & Associates has not verified, and will not verify, any of the information contained herein, nor has Lee & Associates conducted any investigation regarding these matters and makes no warranty or representation whatsoever regarding the accuracy or completeness of the information provided. All potential buyers must take appropriate measures to verify all of the information set forth herein. Lee & Associates is a service mark of Lee & Associates Commercial Real Estate Services, Inc. © 2026 Lee & Associates. All rights reserved.

## NON-ENDORSEMENT NOTICE

Lee & Associates is not affiliated with, sponsored by, or endorsed by any commercial tenant or lessee identified in this marketing package. The presence of any corporation's logo or name is not intended to indicate or imply affiliation with, or sponsorship or endorsement by, said corporation of Lee & Associates, its affiliates or subsidiaries, or any agent, product, service, or commercial listing of Lee & Associates, and is solely included for the purpose of providing tenant lessee information about this listing to prospective customers.

## CONTACT US

JEFFREY IDA  
Founding Principal  
(415) 828-7679  
jida@lee-associates.com  
License ID# 01826381

DOUG OGARD  
Vice President  
(415) 842-1889  
dogard@lee-associates.com  
License ID# 02103324

BRENDAN GALLAGHER  
Founding Principal  
(760) 846-1736  
bgallagher@lee-associates.com  
License ID# 02047890

CHRIS SCHOFIELD  
Principal  
(510) 903-7608  
cschofield@lee-associates.com  
License ID# 01326198