

# pacific arts plaza

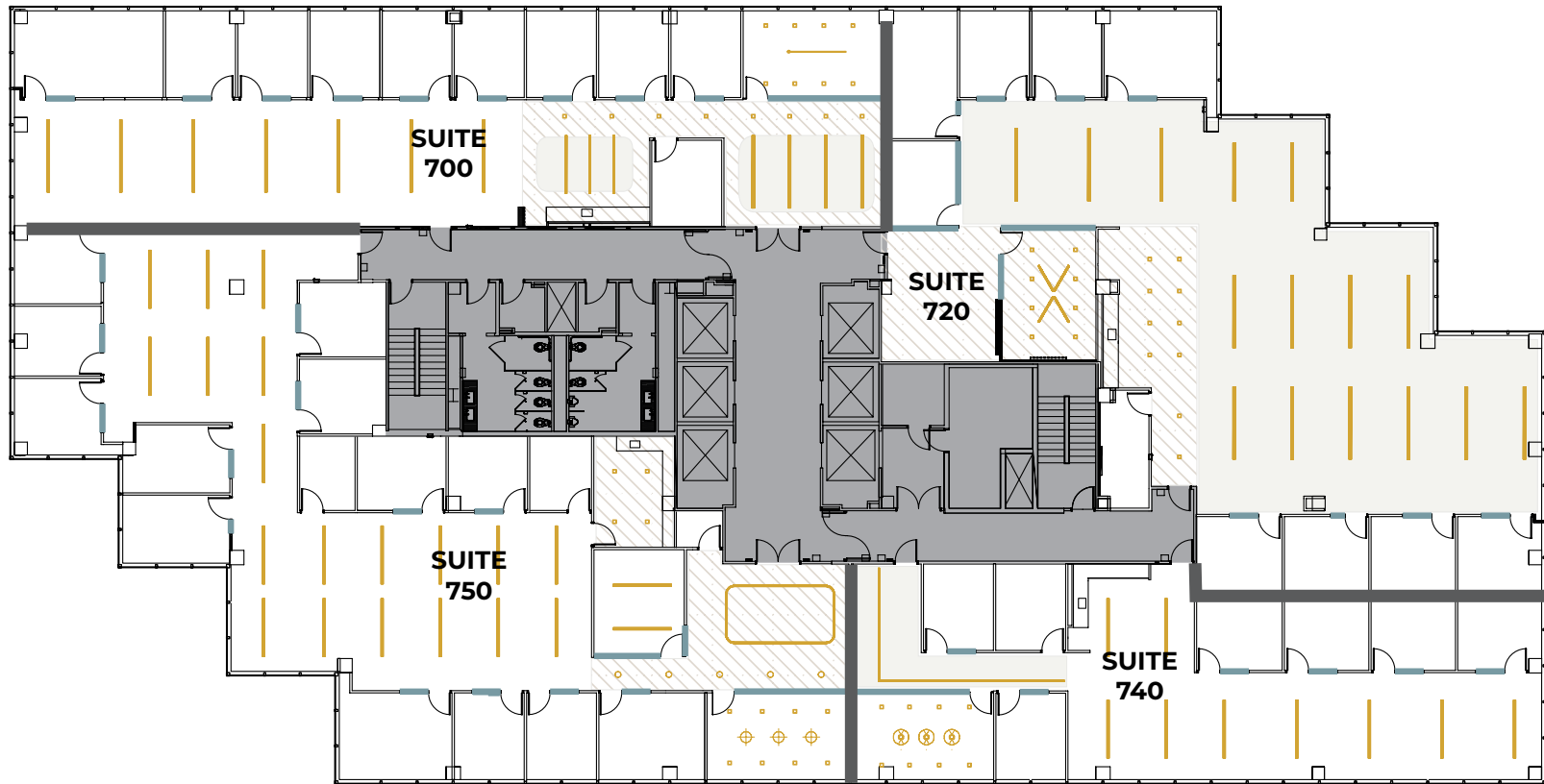
611 Anton Boulevard | Seventh Floor

**Flex+**<sup>®</sup>  
BY IRVINE COMPANY



611 Anton Boulevard

# floor 7



— GLASS    LIGHTS    OPEN CEILING    HARD LID CEILING

○ 4 new, premium move-in ready suites ranging from 3.2K - 6.2K SF (Available Summer 2026)

○ High-end suite finishes, including specialty lighting, open ceiling and premium break areas

○ Convenient access to onsite amenities, including casual and fine-dining options, Kinetic Fitness center and an upgraded Venue Meetings & Events



611 Anton Boulevard

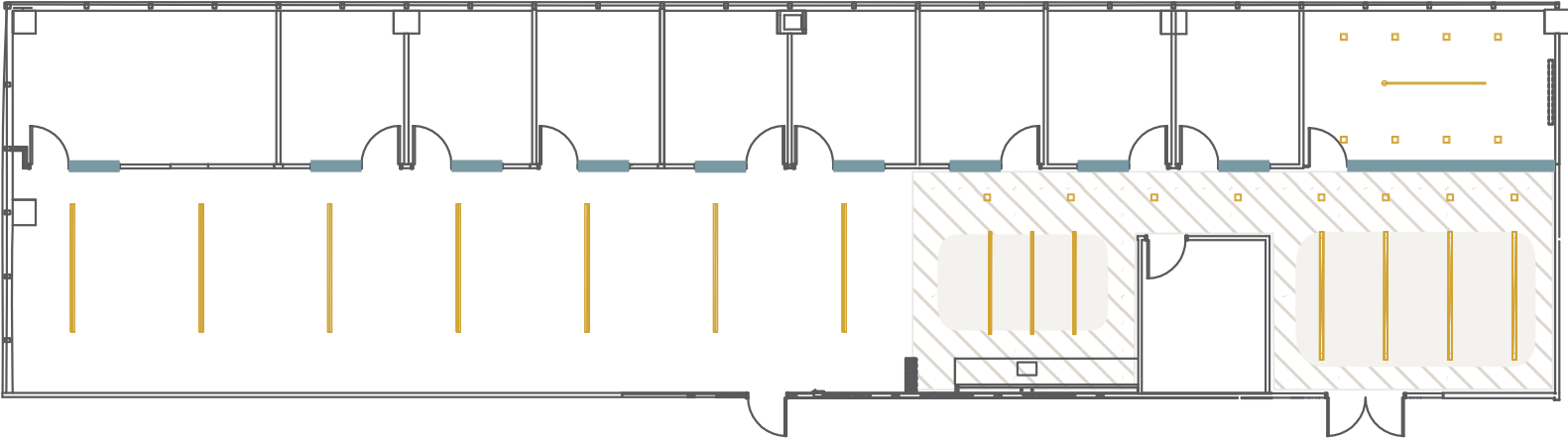
# suite 700

total size  
**±34,356 sqft**

team size  
**19**

private offices  
**9**

meeting room  
**1**



GLASS LIGHTS OPEN CEILING HARD LID CEILING



611 anton boulevard  
**suite 700**



glass partitions + open ceiling + polished concrete + specialty lighting



611 anton boulevard

# suite 700



glass partitions + specialty lighting



611 anton boulevard

# suite 700



built-in appliances + matte black hardware + modern backsplash + open ceiling + stone countertop



611 anton boulevard  
**suite 700**

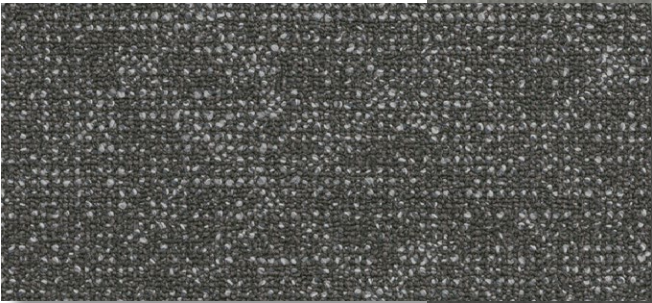


glass partitions



611 Anton Boulevard

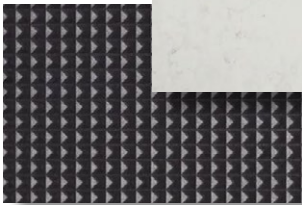
# suite 700



flooring



paint scheme



breakroom



611 Anton Boulevard

# suite 720

total size  
**±36,065 sqft**

team size  
**27**

private offices  
**8**

meeting rooms  
**2**



GLASS LIGHTS OPEN CEILING HARD LID CEILING



611 anton boulevard

# suite 720



specialty lighting



611 anton boulevard

# suite 720



built-in appliances + hard lid ceiling + matte black hardware + modern backsplash + stone countertop



611 anton boulevard  
**suite 720**



glass partitions + open ceiling



611 Anton Boulevard

# suite 720



flooring



paint scheme



breakroom



611 Anton Boulevard

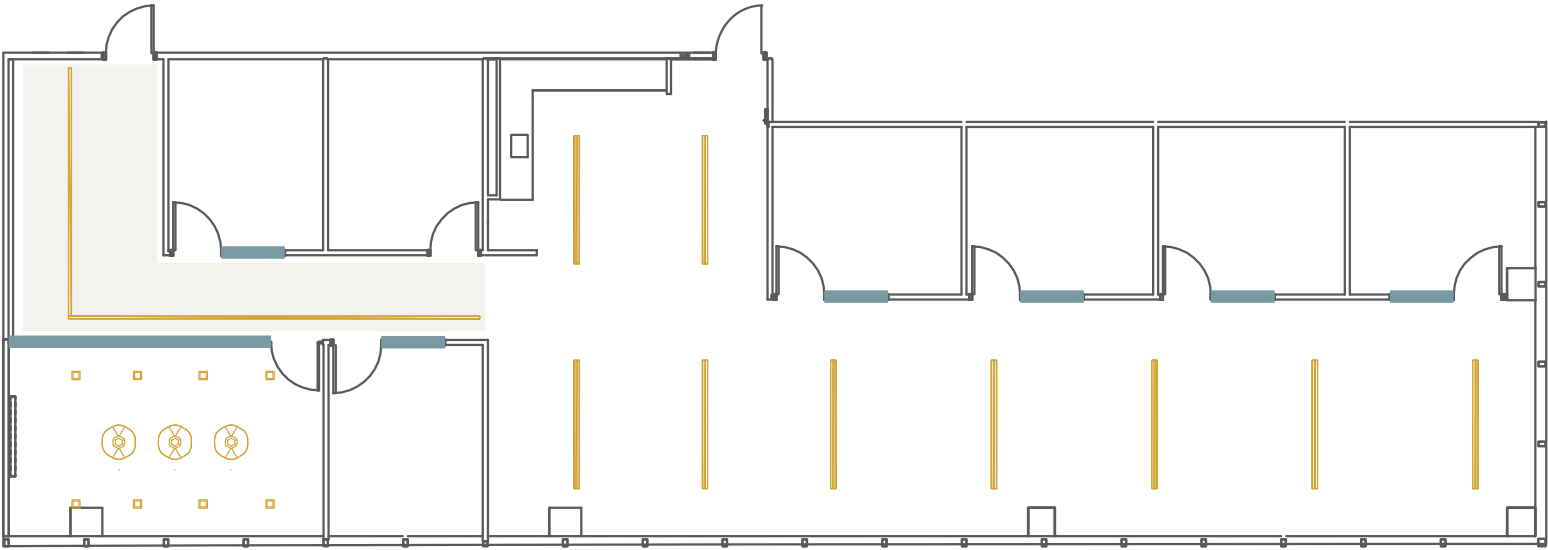
# suite 740

total size  
**±32,271 sqft**

team size  
**15**

private offices  
**6**

meeting room  
**1**



— GLASS     LIGHTS     OPEN CEILING



611 anton boulevard

# suite 740



glass partitions + open ceiling + polished concrete



611 anton boulevard

# suite 740



glass partitions + specialty lighting



611 anton boulevard

# suite 740



built-in appliances + matte black hardware + modern backsplash + polished concrete + stone countertop



611 anton boulevard

# suite 740

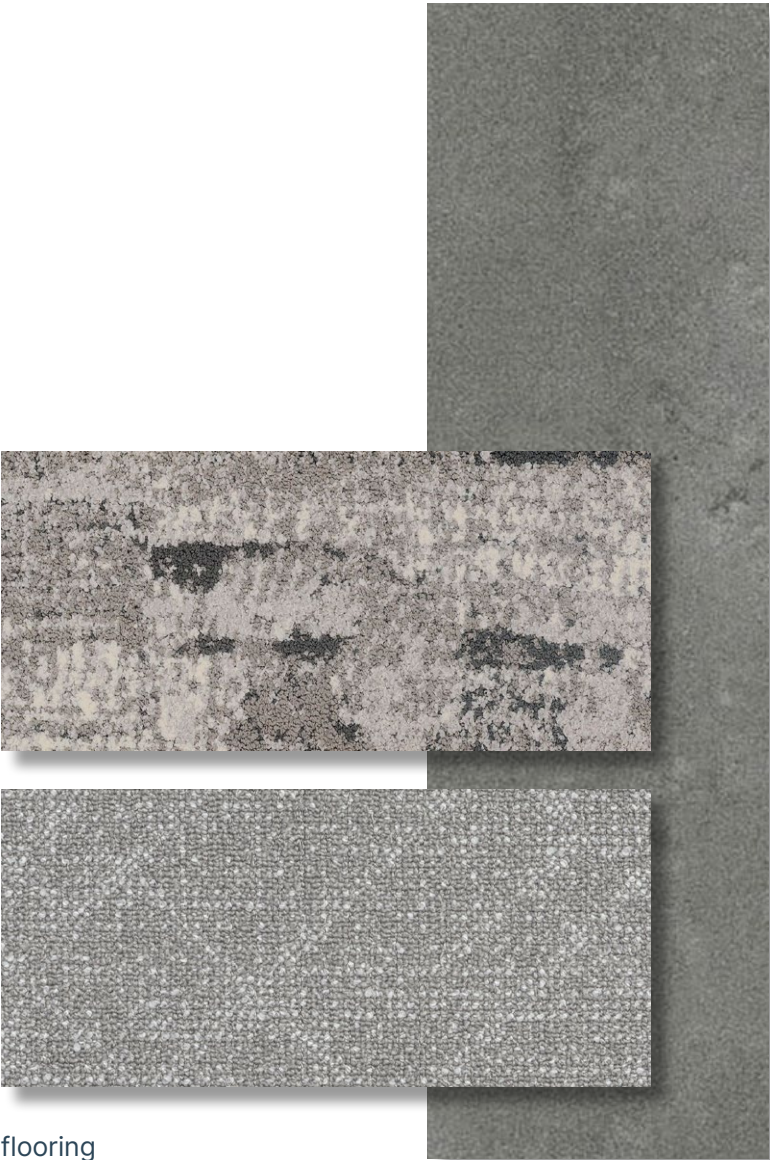


glass partitions



611 Anton Boulevard

# suite 740



flooring



paint scheme



breakroom



611 Anton Boulevard

# suite 750

total size  
**±36,289 sqft**

team size  
**28**

private offices  
**13**

meeting rooms  
**2**



GLASS LIGHTS HARD LID CEILING



611 anton boulevard  
**suite 750**



glass partitions + hard lid ceiling + specialty lighting + wood laminate flooring



611 anton boulevard

# suite 750



glass partitions



611 anton boulevard

# suite 750



built-in appliances + matte black hardware + modern backsplash + polished concrete + stone countertop



611 anton boulevard  
**suite 750**



glass partitions



611 Anton Boulevard

# suite 750



flooring



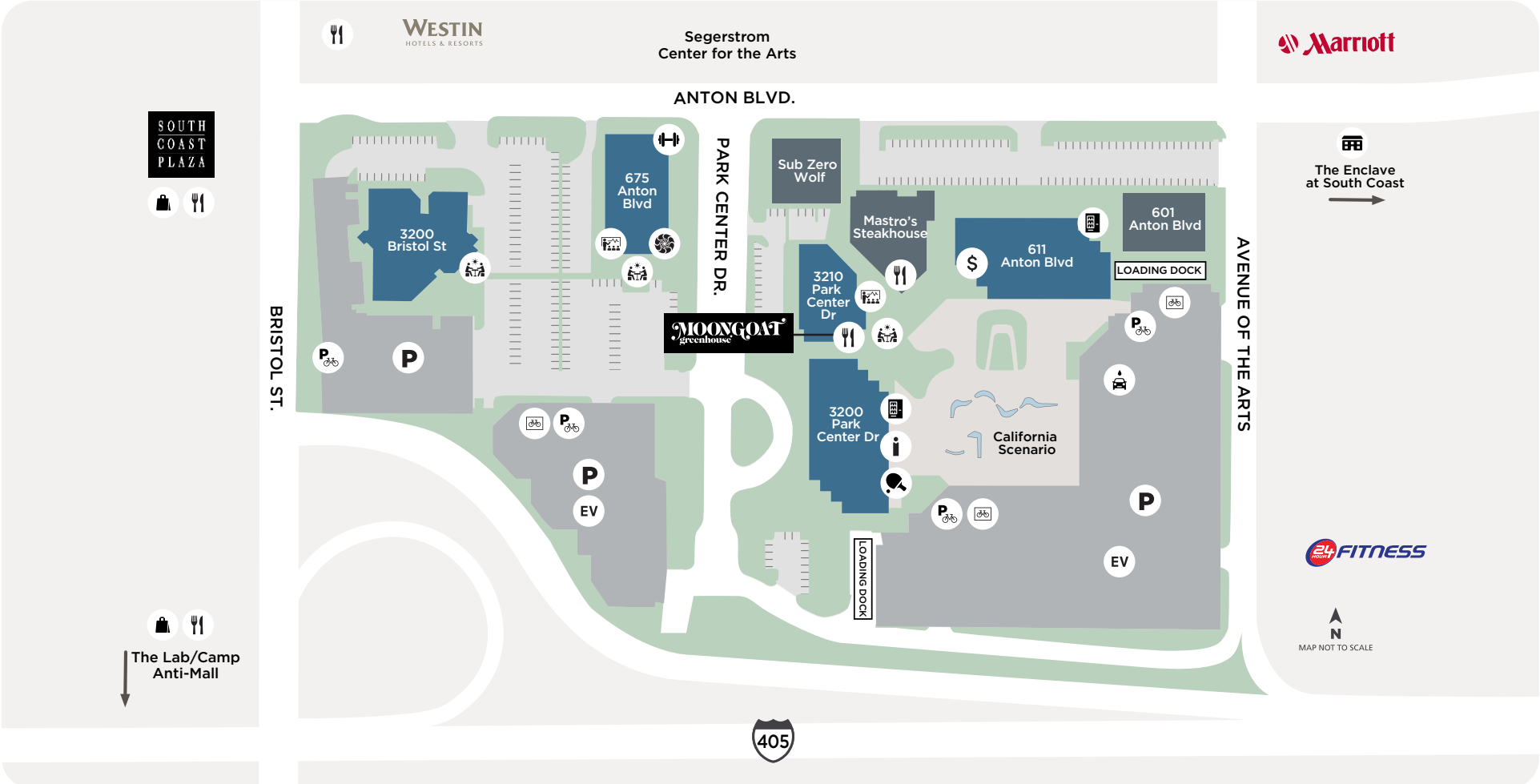
paint scheme




breakroom



# pacific arts plaza



- |   |  |  |  |   |  |   |  |  |
|---|--|--|--|---|--|---|--|--|
| <br>APARTMENTS     | <br>ATM     | <br>AUTO<br>DETAILING | <br>BIKE<br>LOCKERS | <br>BIKE<br>PARKING                         | <br>CAFE/ RESTAURANT  | <br>CONFERENCE<br>CENTER | <br>CUSTOMER<br>RESOURCE CENTER | <br>DRY<br>CLEANING |
| <br>EV<br>CHARGING | <br>FITNESS | <br>GAME<br>LOUNGE    | <br>MAIL<br>ROOM    | <br>OUTDOOR<br>WORKSPACE (WIFI-<br>ENABLED) | <br>PARKING<br>OFFICE | <br>PARKING<br>STRUCTURE | <br>VENDING<br>MACHINE          |  |



modern venue meeting & event center



[flexplus.com](https://flexplus.com) | 408.330.0100

All properties for lease by Irvine Management Company, a licensed real estate broker, DRE LIC. #02041810. Product and amenities are subject to availability. Images may not be to scale, all renderings/pictures shown are for information and illustration purposes only and are subject to change. Not all features available in all communities. Furniture not included. Not a representation or warranty. ©2026 Irvine Management Company. All Rights Reserved. The Sunwave, Irvine Company and Flex+ are registered trademarks of Irvine Management Company.

**Flex+**<sup>®</sup>  
BY IRVINE COMPANY