

613
ABBOTT

FOR LEASE



DETROIT CBD, MICHIGAN

613 Abbott Street

NEWMARK

 TIME EQUITIES INC.

Building Overview

613 ABBOTT

ASKING RATE:

\$24.00/SF Gross + Electric

YEAR BUILT:

1989

BUILDING HEIGHT:

6 stories (tower)

TOTAL BUILDING AREA:

80,163 SF

PARKING:

On-sight parking opportunities and ability to secure up to 4/1000 RSF within 1-2 blocks of building.

613 Abbott St.

- Time Equities recently renovated the lobby and common areas
- Building ideal for law firms, insurance and non-profit companies
- Building offers amphitheater, cafeteria, and conference room
- Generous window lines and great views of CBD
- Wi-Fi in common areas
- Easy accessibility to M-10 and I-75
- New grab-and-go market and fitness center

Available Space

SUITE 430	1,534 RSF
SUITE 630	1,680 RSF

Property Summary

Located in Detroit's revitalized CBD, 613 Abbott and 1240 Third Avenue feature a collective 87,000+ square feet between the two buildings. Amenities include large conference facilities, skylight atrium, food service, on-site security, and excellent signage opportunities. Additionally, the location offers convenient access to area freeways and walkable attractions such as MGM Grand Casino, Corktown, Campus Martius, the Riverwalk, and the Arena and Financial Districts. All of these attributes combined with ample downtown parking, make this well-maintained property a desirable Detroit location.



**DETROIT CBD
LOCATION**



**CONVENIENT
M-10 AND I-75
ACCESS**



**SIGNAGE
OPPORTUNITY**



**FITNESS
CENTER**



**72 PARKING
SPACES**



**LARGE CONFERENCE
FACILITY / AMPHITHEATER**



**FOOD SERVICE
AREA**

📍 613 Abbott Street





LOBBY



AMPHITHEATER



NEW! GRAB-AND-GO



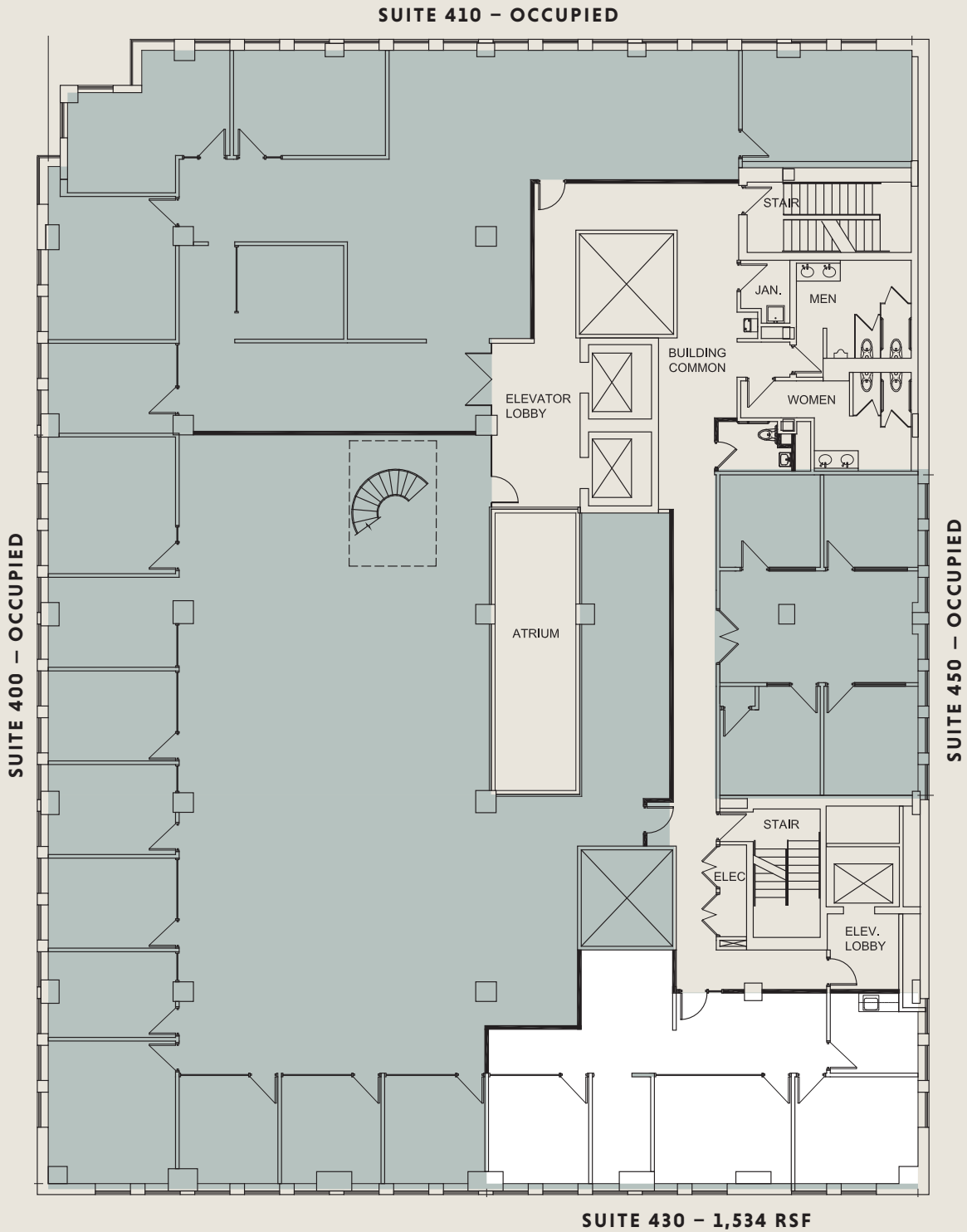
NEW! GRAB-AND-GO



FITNESS CENTER

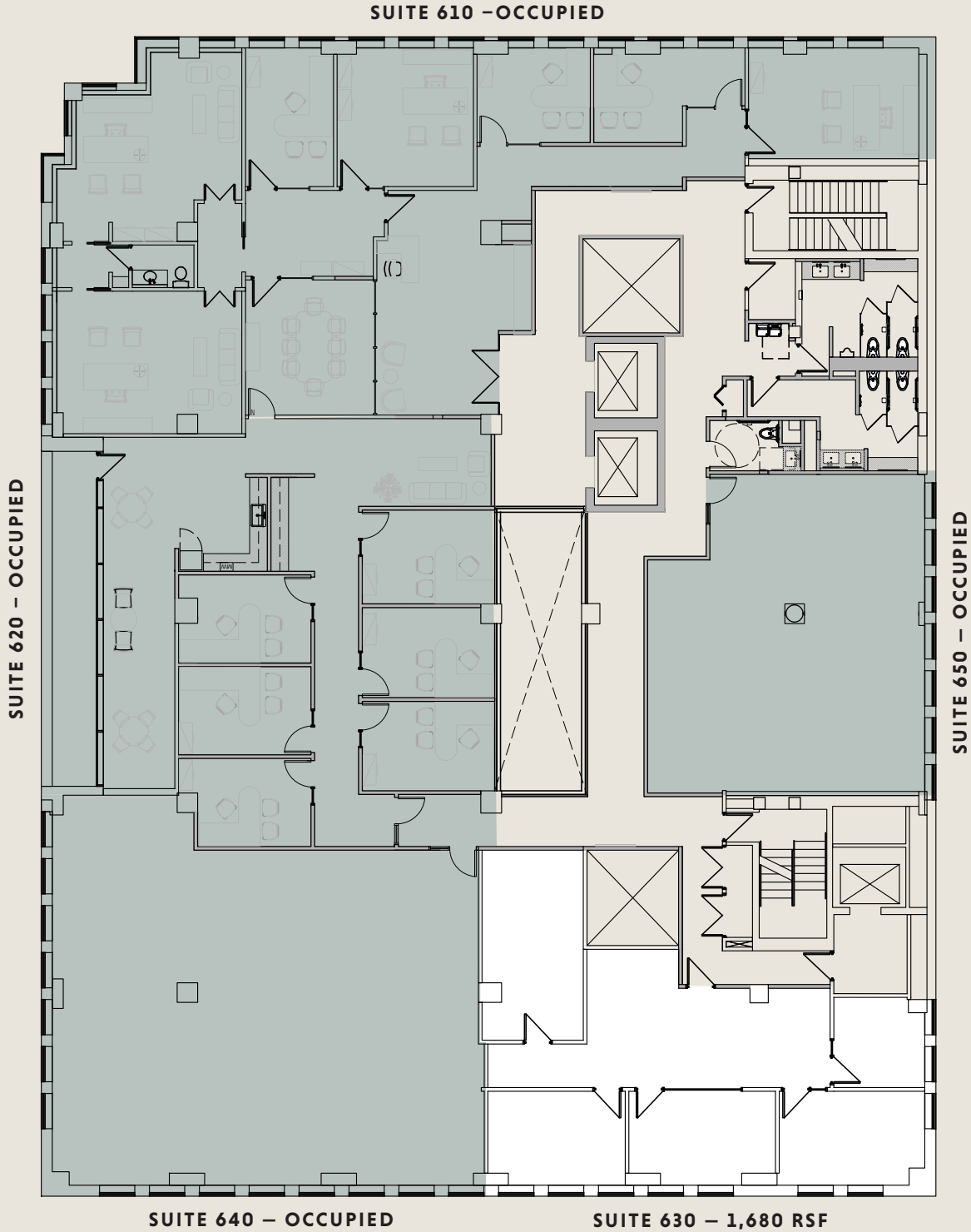


613 Abbott St.



**613 Abbott St.
Sixth Floor / Proposed Demising Plan**















1,680 RSF Available







Area Overview



Points of Interest

-  **613 Abbott Street**
-  COBO Center
-  Hart Plaza
-  Renaissance Center
-  Riverwalk
-  Campus Martius
-  Greektown
-  Greektown Casino
-  Ford Field
-  Comerica Park
-  Little Caesars Arena
-  Fox Theater
-  The Filmore
-  MGM Casino

Developments

-  The District Detroit
-  Hudson Development
-  Monroe Blocks
-  Michigan Central Train Station/
Future Ford HQ



Larry Emmons

Senior Managing Director
+1 248 447 2707
larry.emmons@nmrk.com

JP Champine

Managing Director
+1 248 357 6596
jp.champine@nmrk.com

Newmark
39400 Woodward Avenue
Suite 100
Bloomfield Hills, MI 48304
+1 248 350 9500

nmrk.com

NEWMARK

 **TIME EQUITIES INC.**