

MAPA'S MAIN STREET PROMENADE

Unit 2B | 2050 Main Street, Wailuku, HI 96793



PROPERTY DESCRIPTION

Located in the heart of Wailuku, the property is within walking distance of Maui County and State office buildings, making it well suited for professional, legal, and government-related users. A ground-floor food court offers a convenient variety of dining options for tenants and visitors. The County of Maui parking structure is conveniently located directly behind the property, providing accessible parking for employees and clients.

PROPERTY HIGHLIGHTS

- Available Immediately
- Seven (7) offices with kitchenette and reception area
- Separately metered utilities
- Elevator
- ADA-accessible building

OFFERING SUMMARY

Lease Rate:	\$1.64 SF/month (NNN)
OPEX Rate:	\$1.02
Available SF:	3,174 SF

CHRISSEY SWINK, R(S) **GREG SHEEHAN, R(B)**

Sales & Leasing
808.281.9658
chrissywink@mauibiz.com

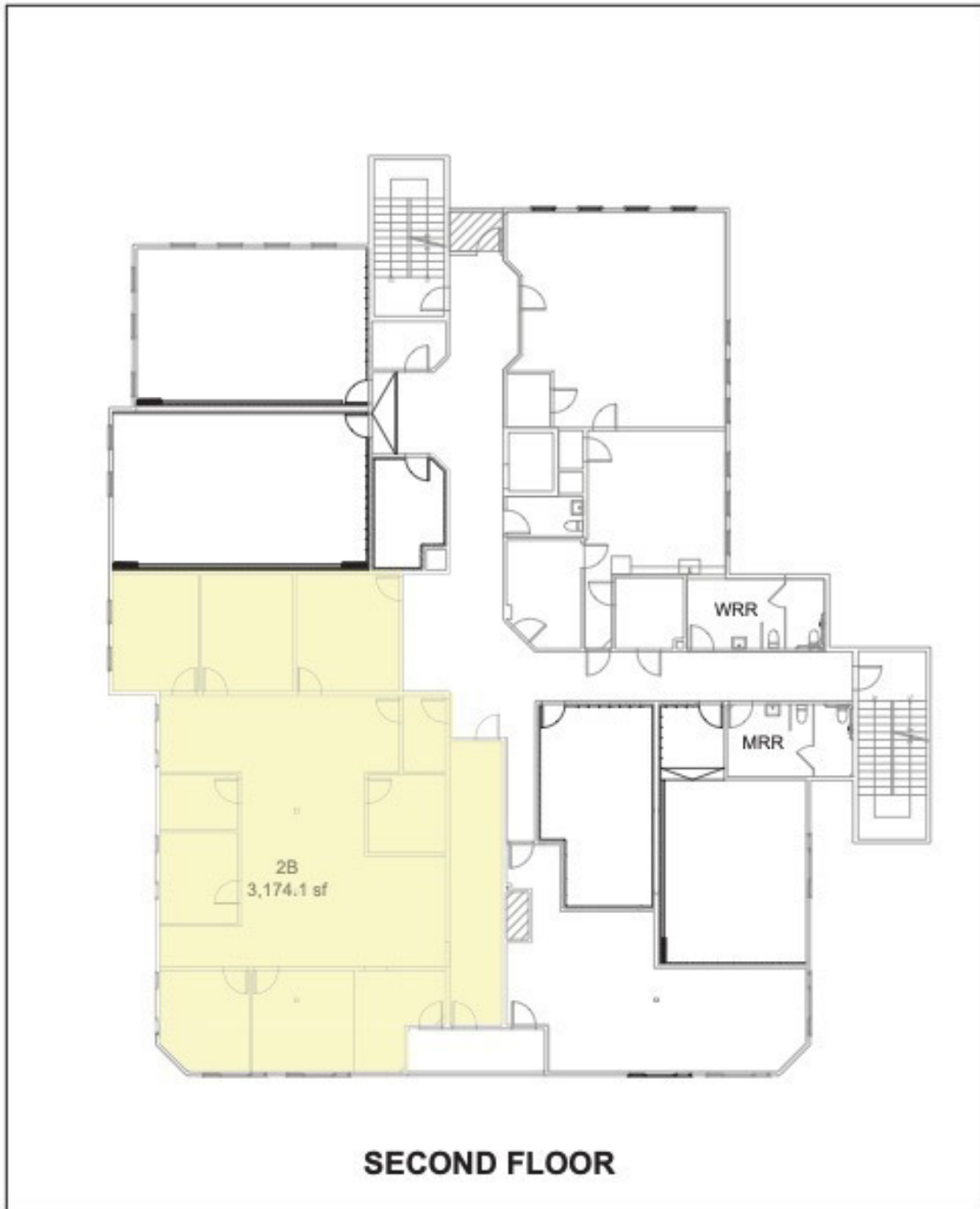
Principal Broker
808.250.0900
gsheehan@mauibiz.com



COMMERCIAL PROPERTIES
OF MAUI

MAPA'S MAIN STREET PROMENADE

Unit 2B | 2050 Main Street, Wailuku, HI 96793



CHRISSEY SWINK, R(S) GREG SHEEHAN, R(B)

Sales & Leasing
808.281.9658
chrissywink@mauibiz.com

Principal Broker
808.250.0900
gsheehan@mauibiz.com



COMMERCIAL PROPERTIES
OF MAUI

MAPA'S MAIN STREET PROMENADE

Unit 2B | 2050 Main Street, Wailuku, HI 96793



CHRISSE SWINK, R(S)

Sales & Leasing
808.281.9658
chrissswink@mauibiz.com

GREG SHEEHAN, R(B)

Principal Broker
808.250.0900
gsheehan@mauibiz.com



COMMERCIAL PROPERTIES
OF MAUI