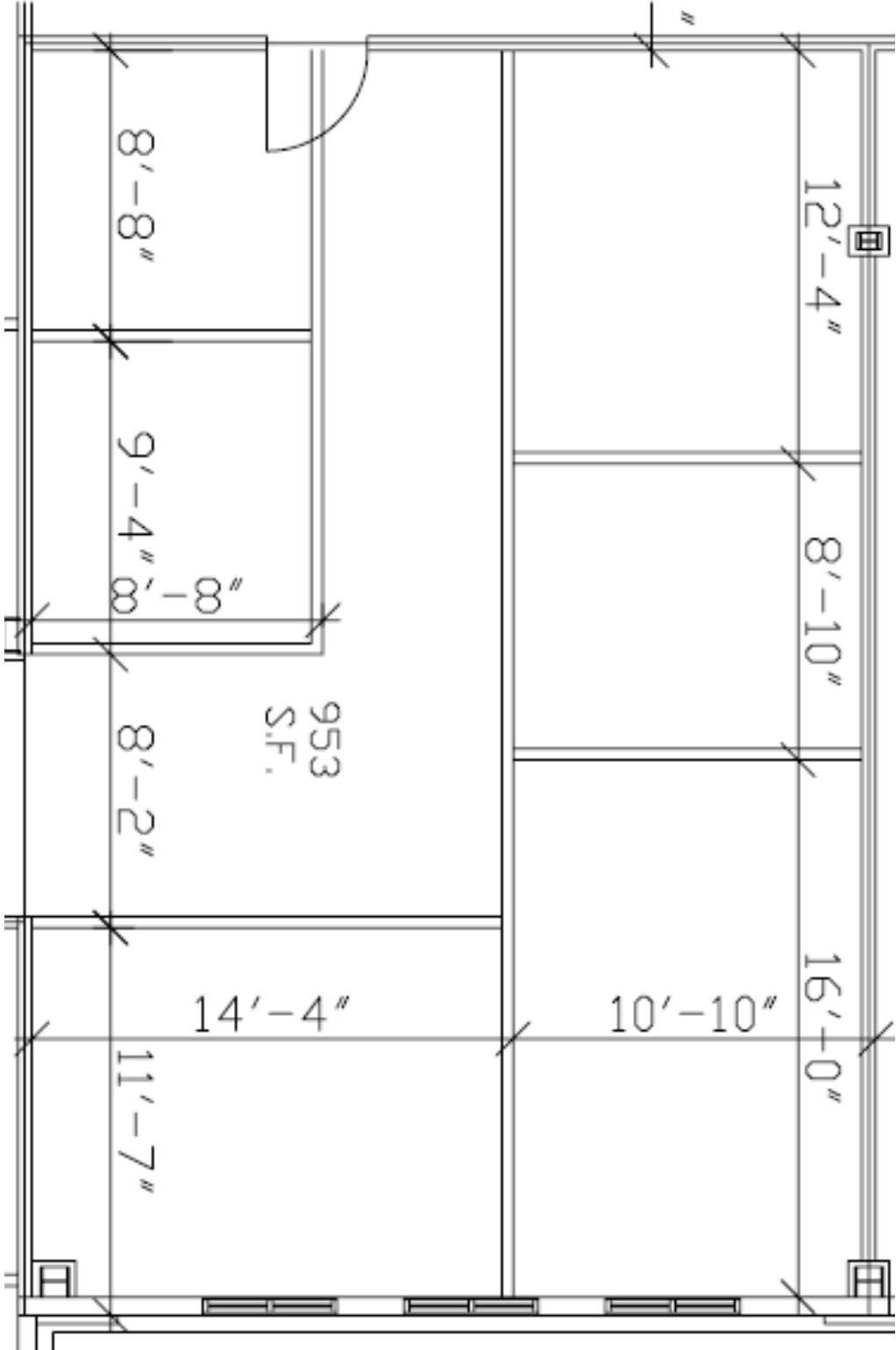


EXHIBIT "A"
TO OFFICE BUILDING LEASE BETWEEN
96TH & 129TH, LLC, AS LANDLORD, AND
LIMESTONE CONSTRUCTION, LLC, AS TENANT

PREMISES
9500 N. 129th East Avenue, Suite 201, Owasso, Oklahoma



____ Landlord ____ Tenant