

For Lease



OFFICE SPACE

14065 VICTORIA TRAIL NW
EDMONTON, ALBERTA



HIGHLIGHTS

- Major office & retail plaza located on the intersection of Victoria Trail & 139 Ave NW
- HVAC less than 5 years old
- Parking is free flow with 358 stalls
- Tenant improvement allowance negotiable

PROPERTY DESCRIPTION

Base Rent:	\$12.00 psf
Op Costs & Taxes:	\$16.41 psf est. utilities included
Size:	Unit 209: 1,797 sq ft
Centre Size	95,076 sq ft
Parking:	358 surface stalls

BUILDING DETAILS



HVAC

Hours

Tenant

Dependant



Roof

Built Up

Asphalt



Traffic

Count

15,000



Neighbourhood

Bannerman



Zoning

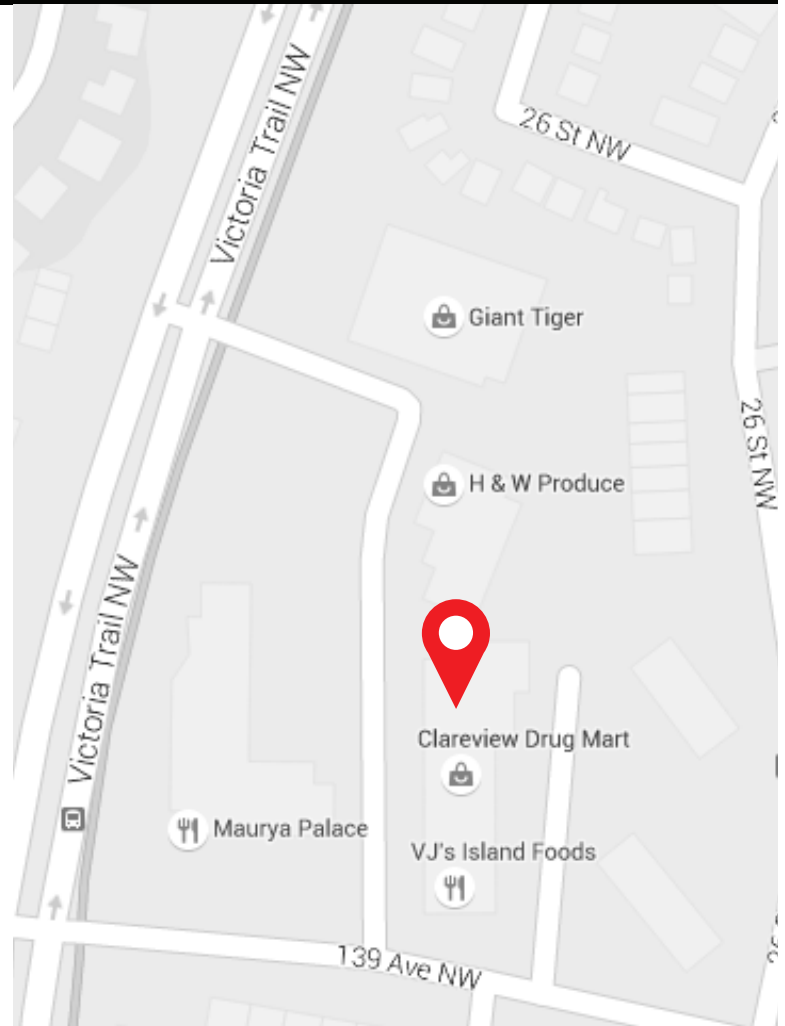
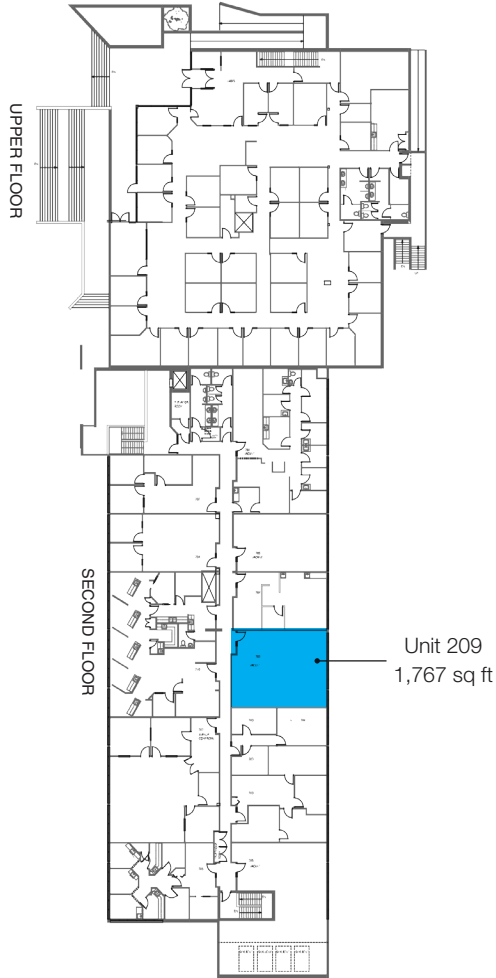
CSC

HEAD OFFICE
Suite 300, 1324 – 11 Avenue SW
Calgary, Alberta T3C 0M6
Toll Free 1.800.750.6766
AvenueCommercial.com

AVENUE | Commercial
Real Estate Solutions

LOCATION

14065 Victoria Trail NW, Edmonton, Alberta



CHOOSE YOUR AVENUE

Commercial / Residential / Financing / Property Management / Investments

Jason Dieser

Associate / Property Manager

587.545.9400

jdieser@avenuecommercial.ca

This brochure is intended for information purposes only and should not be relied upon for accurate factual information by the recipients hereof. The information contained herein is based on information which Avenue Commercial deems reliable. The information contained herein is subject to change without notice.



HEAD OFFICE

Suite 300, 1324 - 11 Avenue SW
Calgary, Alberta T3C 0M6

Main 403.802.6766

Toll Free 800.750.6766

AvenueCommercial.com

