

Office | For Lease

**CBRE**

# James Center Plaza

1628 South Mildred Street  
Tacoma, WA  
[www.cbre.com](http://www.cbre.com)

Rate: \$23.00 per sq. ft./year, NNN



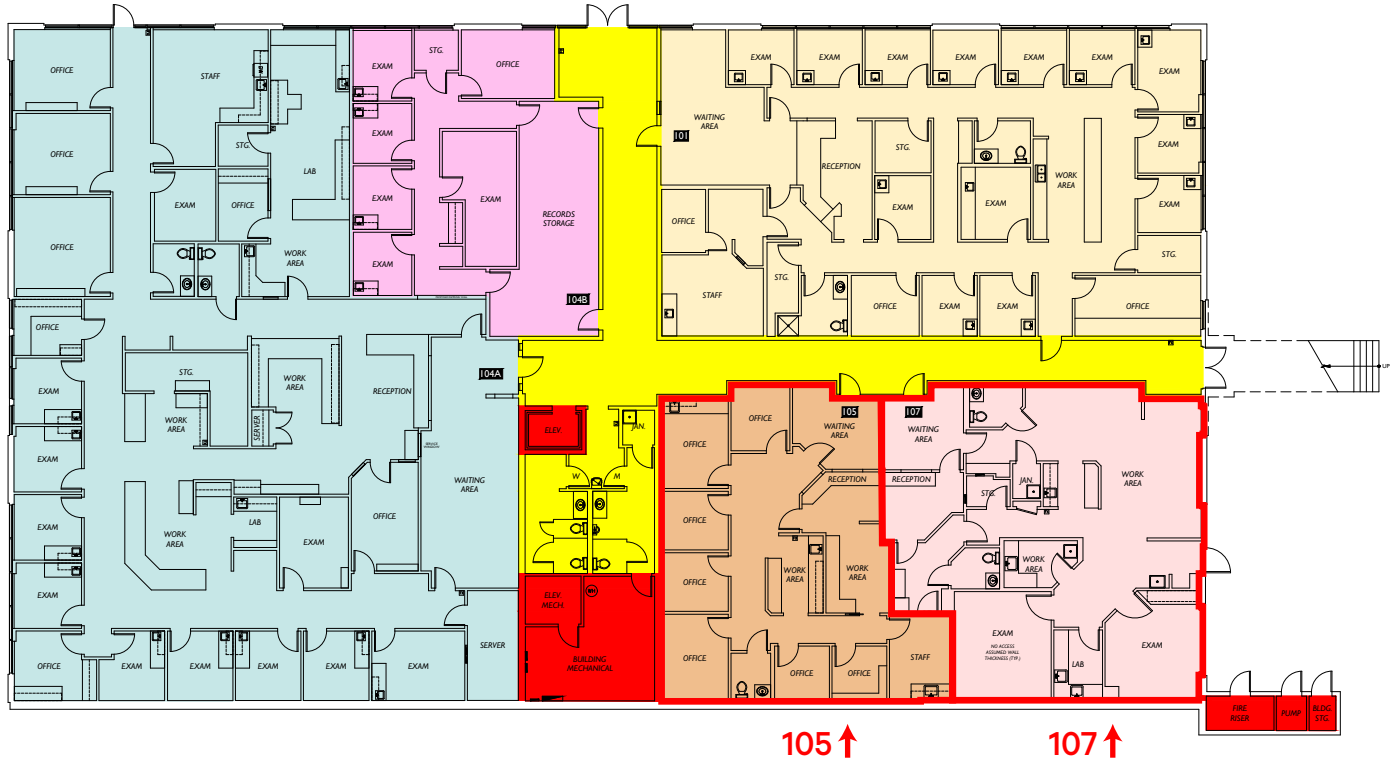


## Building Features

- + Professional office finishes with common area restrooms, elevator and lobby
- + Mix of tenants servicing the North Tacoma, University Place and Fircrest submarkets
- + Close proximity to several retail amenities
- + Public transportation within walking distance
- + Ample parking
- + Directly across from Tacoma Community College
- + Future Link light rail stop planned on Mildred Street
- + New Aviva Crossing multifamily development, comprised of 550+ units under construction nearby



# 1<sup>st</sup> Floor Plan



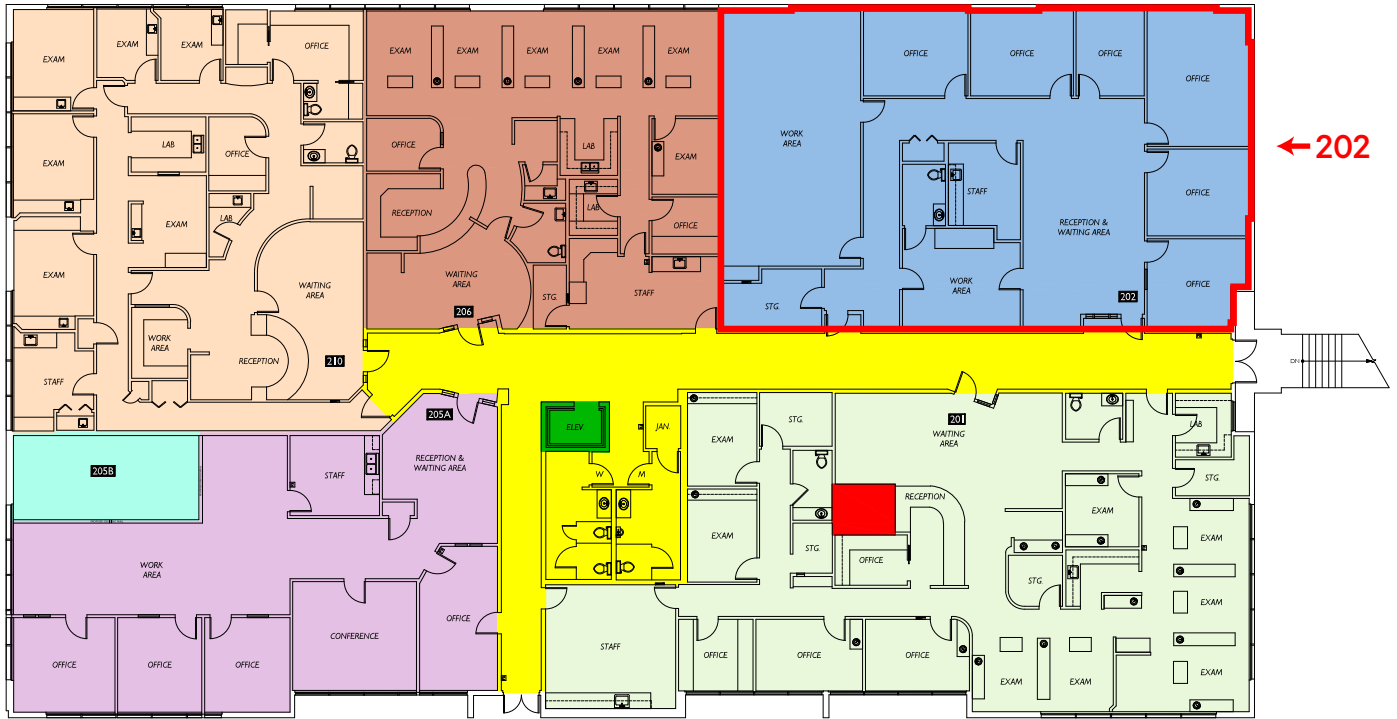
## Available Suites

+ Suite #105 – 1,833 SF

+ Suite #107 – 2,260 SF

+ Can be combined for a total of  
4,093 SF

# 2<sup>nd</sup> Floor Plan



## Available Suites

+ Suite #202 – 3,840 SF

## Contact Us

**Robert Hacker**  
Vice President  
+1 253 596 0049  
bob.hacker@cbre.com

© 2025 CBRE, Inc. All rights reserved. This information has been obtained from sources believed reliable, but has not been verified for accuracy or completeness. You should conduct a careful, independent investigation of the property and verify all information. Any reliance on this information is solely at your own risk. CBRE and the CBRE logo are service marks of CBRE, Inc. All other marks displayed on this document are the property of their respective owners, and the use of such logos does not imply any affiliation with or endorsement of CBRE. Photos herein are the property of their respective owners. Use of these images without the express written consent of the owner is prohibited.