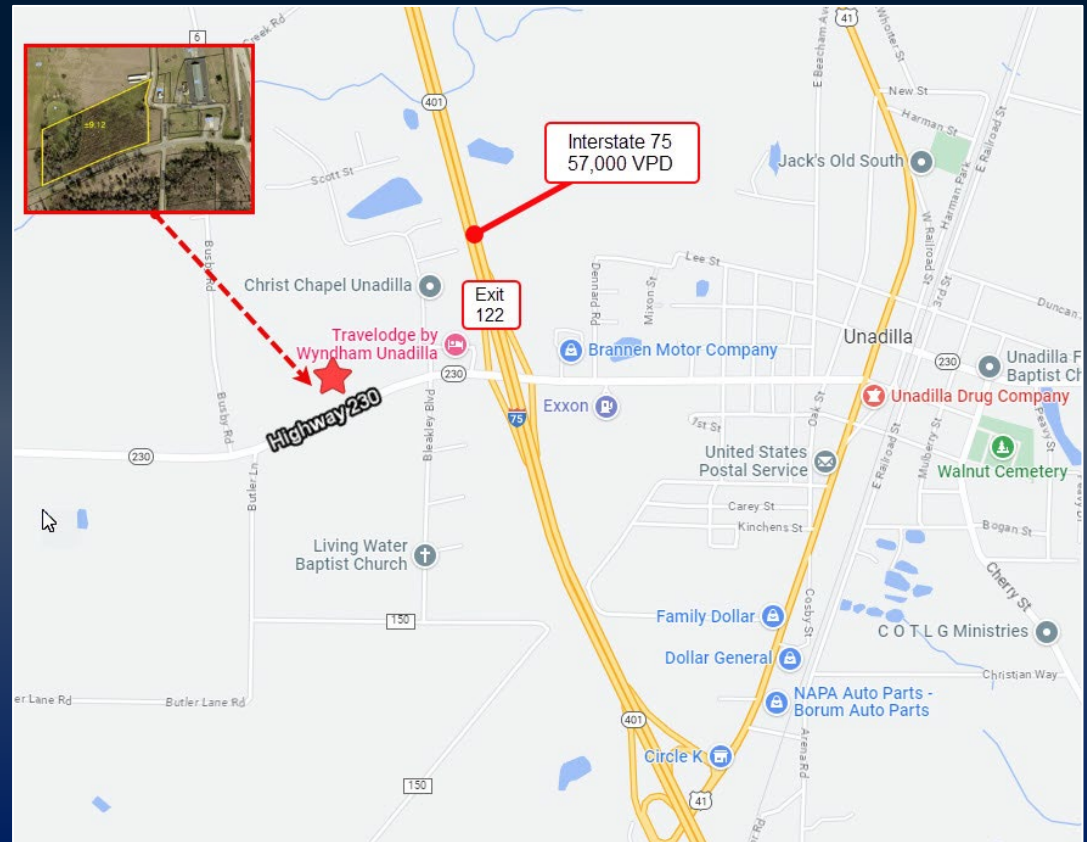


COMMERCIAL LAND FOR SALE

**HIGHWAY 230, UNADILLA GA,
DOOLY COUNTY, 31091**

- +/-9.12 AC
- LEVEL TOPOGRAPHY
- ZONED: C-2
- WATER, SEWER & NATURAL GAS AVAILABLE
- CONVENIENT LOCATION TO I-75 (EXIT 122)
- LOCATED AT CORNER OF HIGHWAY 230 AND BLEAKLEY BLVD



ASKING PRICE: \$700,000



REX YODER C: 478.394.5777

RYODER@THESUMMITGROUPMACON.COM

4124 ARKWRIGHT ROAD, SUITE 1, MACON, GA 31210

O: 478.750.7507

WWW.THESUMMITGROUPMACON.COM

