

ERLANGER FLEX SPACE

600 Rodeo Drive (Lower Level) | 5,600 SF of Office or Flex Space
Erlanger, Kentucky 41018 | \$11.00/SF Full-Service Gross



Property Highlights

Abundant parking ratio of 7 per 1,000 SF
5,600 SF of move-in ready finished space
Tremendous access to I-275, I-71, and I-75
Tenant pays for utilities & janitorial directly
Air-conditioned space with exposed ducting
Geothermal HVAC system included in CAM
11'-14' to the bottom of the floor joist
Two (2) restrooms, two (2) drive-in doors
Six percent (6%) fee to tenant rep agents
Asking \$11.00/SF Full-Service Gross

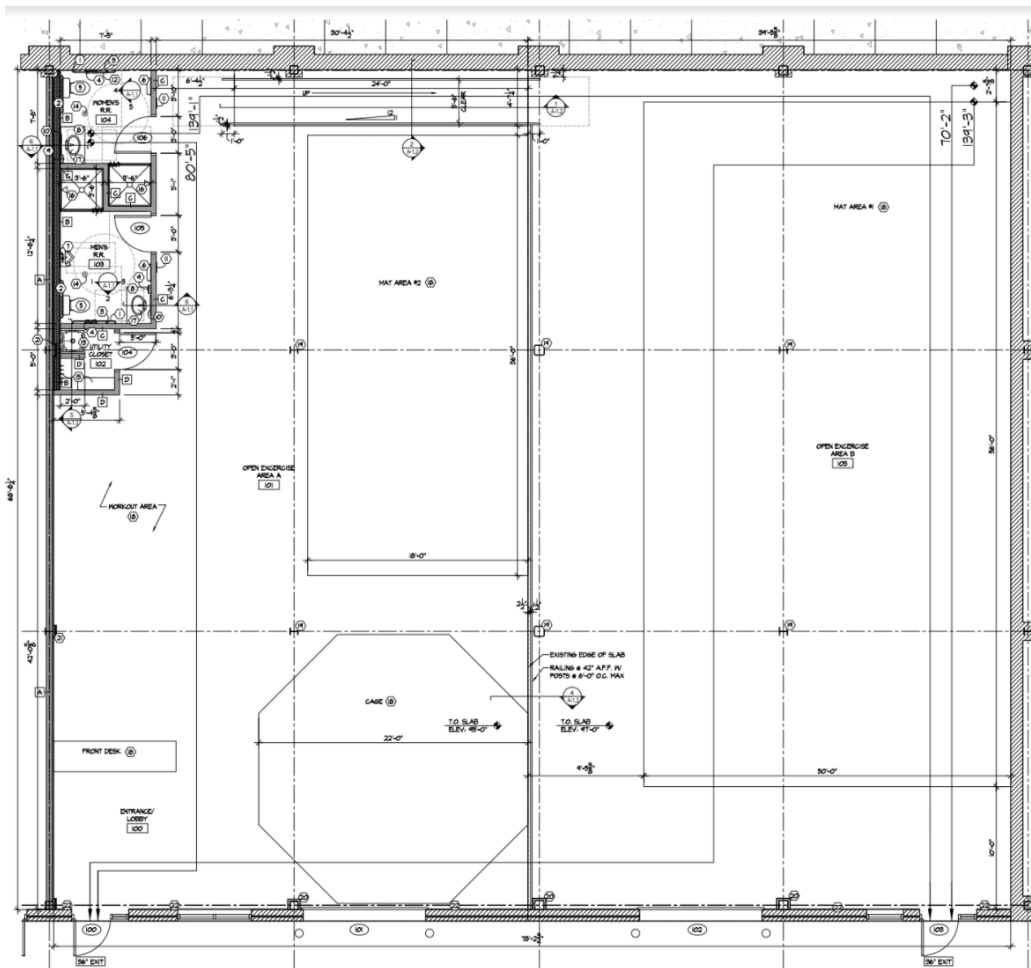


Nick Barela
President, Principal
Direct: (513) 549-5440
nick.barela@republic-cre.com



Ed Mathis
Vice President
Main: (513) 549-0440
ed.mathis@republic-cre.com

INTERIOR PHOTOS & PLAN



5,600 SF

Click icon for a 3D virtual tour



Nick Barela
President, Principal
Direct: (513) 549-5440
nick.barela@republic-cre.com



Ed Mathis
Vice President
Main: (513) 549-0440
ed.mathis@republic-cre.com