



WAREHOUSE | EXCLUSIVE LISTING

Linden, New Jersey

1050 Edward St, Linden, NJ 07036

Size

Warehouse: 89,426 SF

Office: 3,365 SF

Mezz: 9,569 SF

Total: 102,360 SF

Comments

Ideal for Port Distribution

Accessible Location

1 acre of gated trailer parking

12 Loading docks & 1 drive-in door

Delivered fully racked and move-in ready

Docks

12 Loading Docks

1 Drive-in Door

Ceiling Heights

23ft Ceilings

Located just off Route 9 and less than 3 miles from exit 13 on NJ Turnpike

Rent

Upon Request

8 miles from Newark International Airport & 1.4 miles from Linden Airport

Possession

Immediate

Close to the Ports of Newark and Elizabeth



539 Eastern Pkwy
3rd Floor
Brooklyn, NY 11216
Office: 718-484-7985
Fax: 718-484-7986

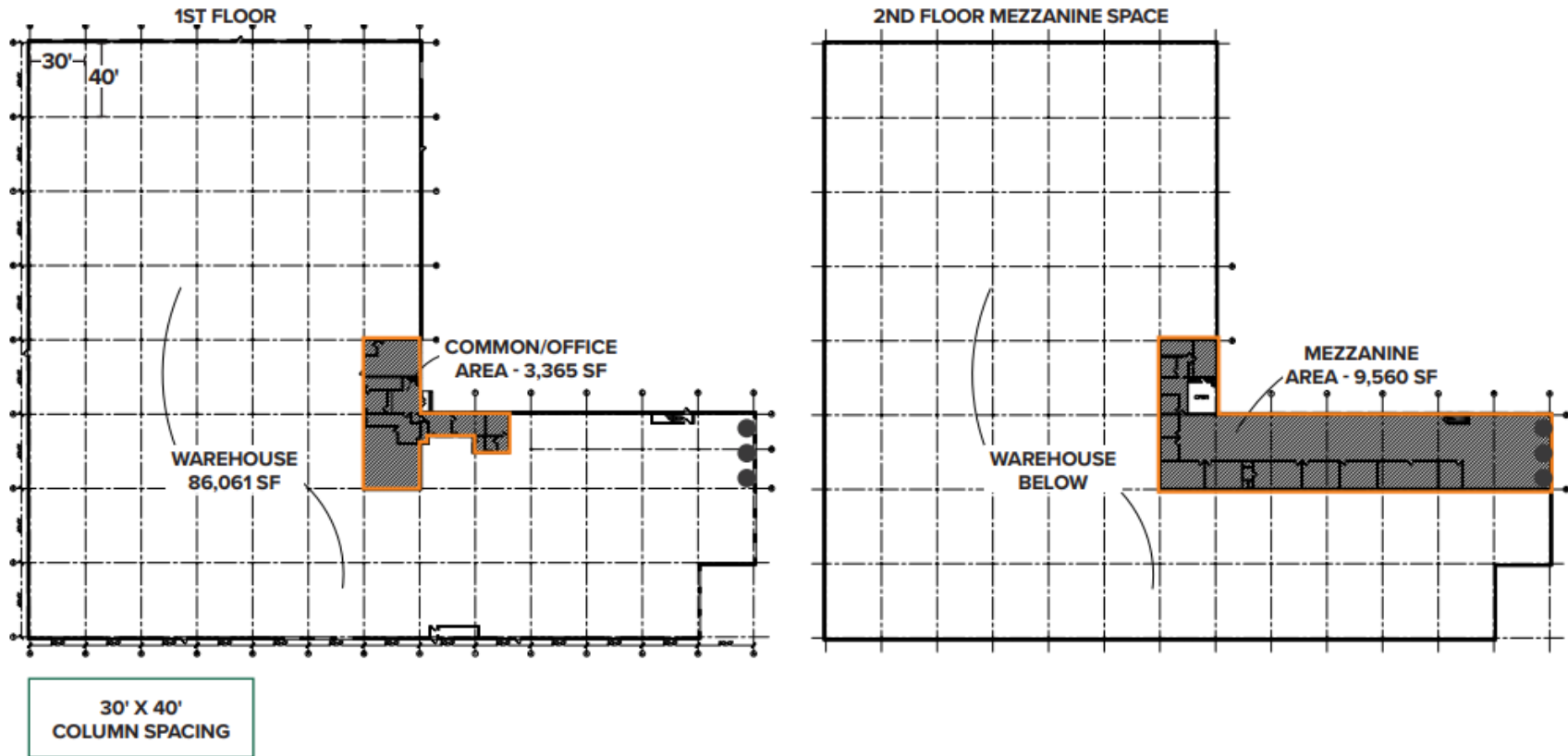
EXCLUSIVE FROM AUGENBAUM REALTY CORP

JOSH AUGENBAUM

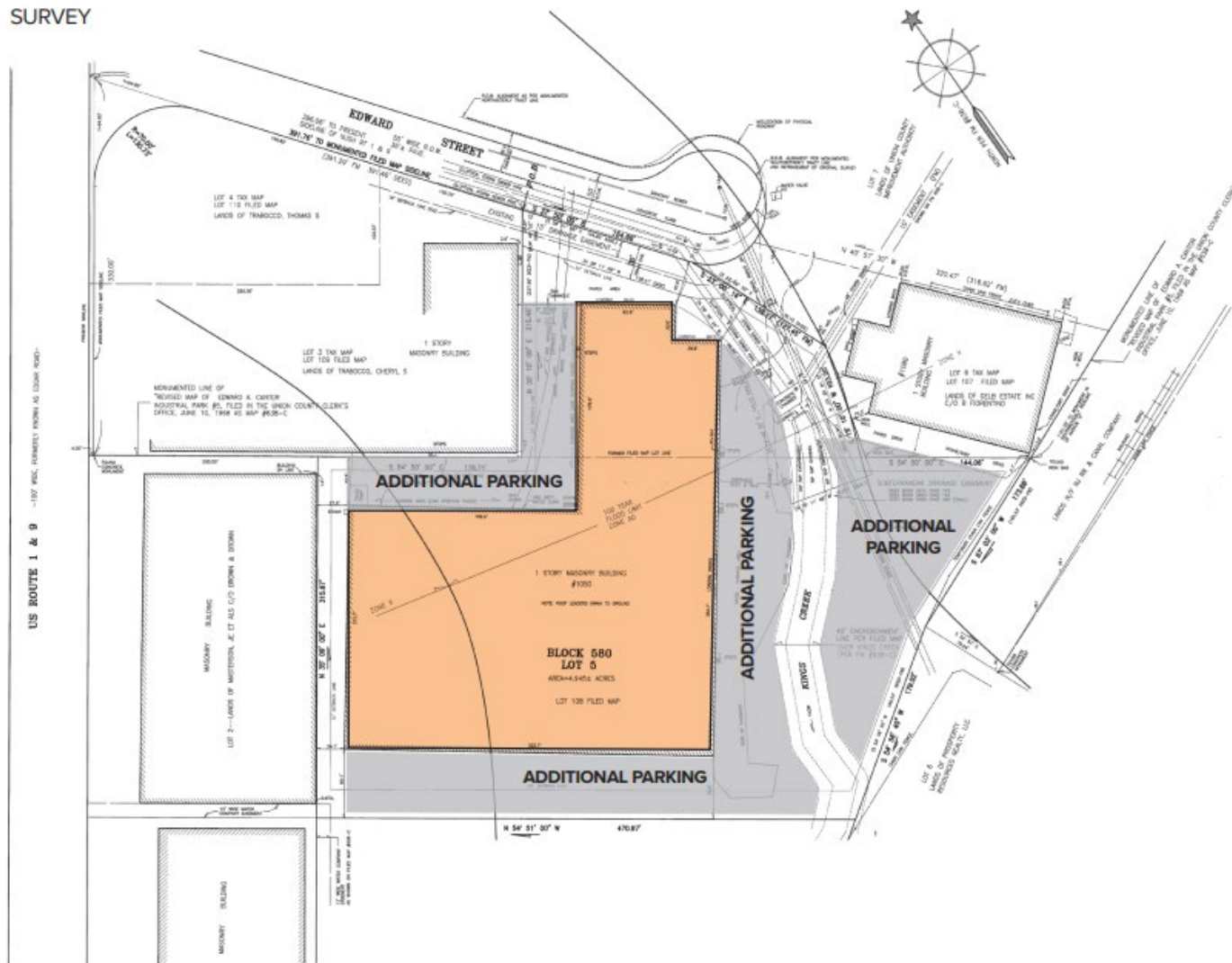
(917) 417-7834 | JOSH@AUGENBAUMREALTY.COM

This information has been secured from sources we believe to be reliable, but we make no representations as to the accuracy of the information. References to square footage are approximate. Buyer must verify the information and bears all risk for any inaccuracies.

FLOOR PLAN



SURVEY



WAREHOUSE | EXCLUSIVE LISTING

1050 Edward Street | LINDEN, NEW JERSEY

JOSH AUGENBAUM | (917) 417-7834 | JOSH@AUGENBAUMREALTY.COM

IMAGES



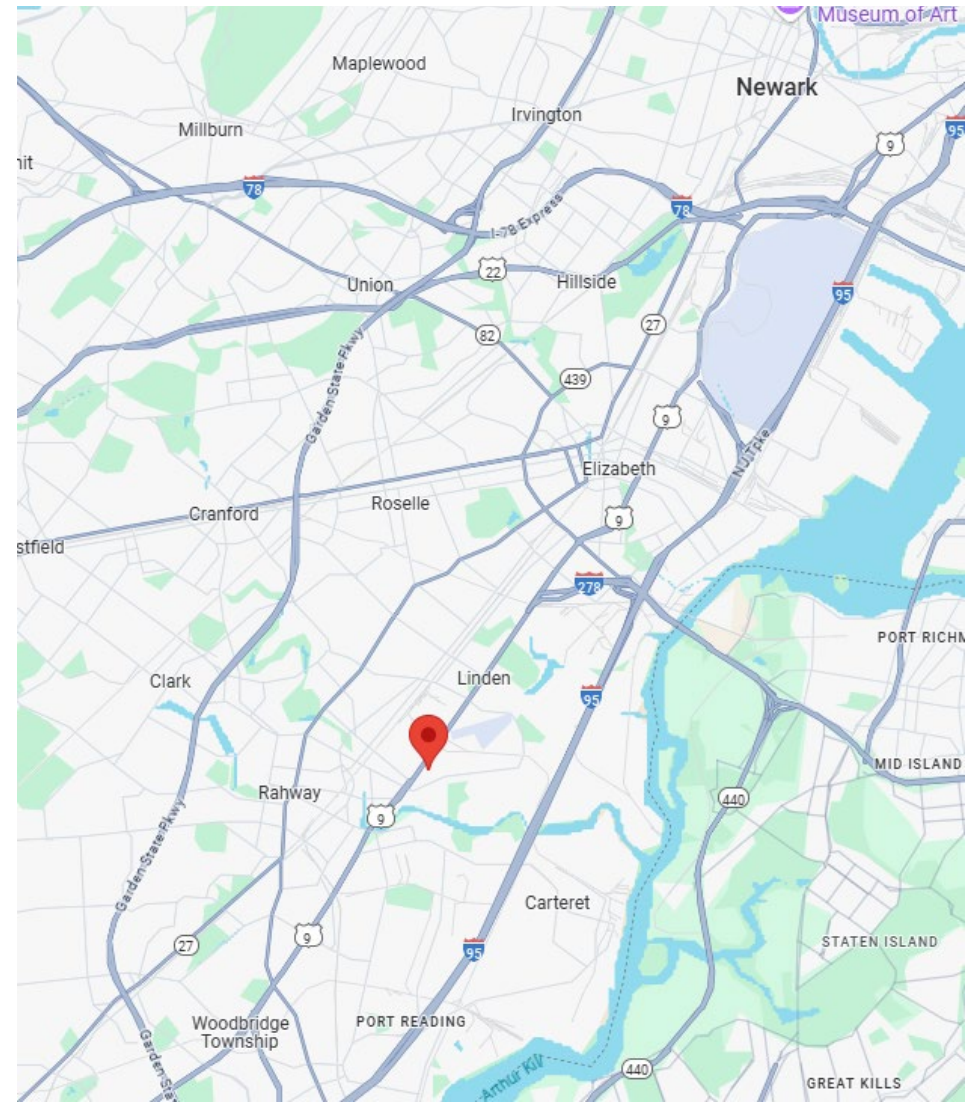
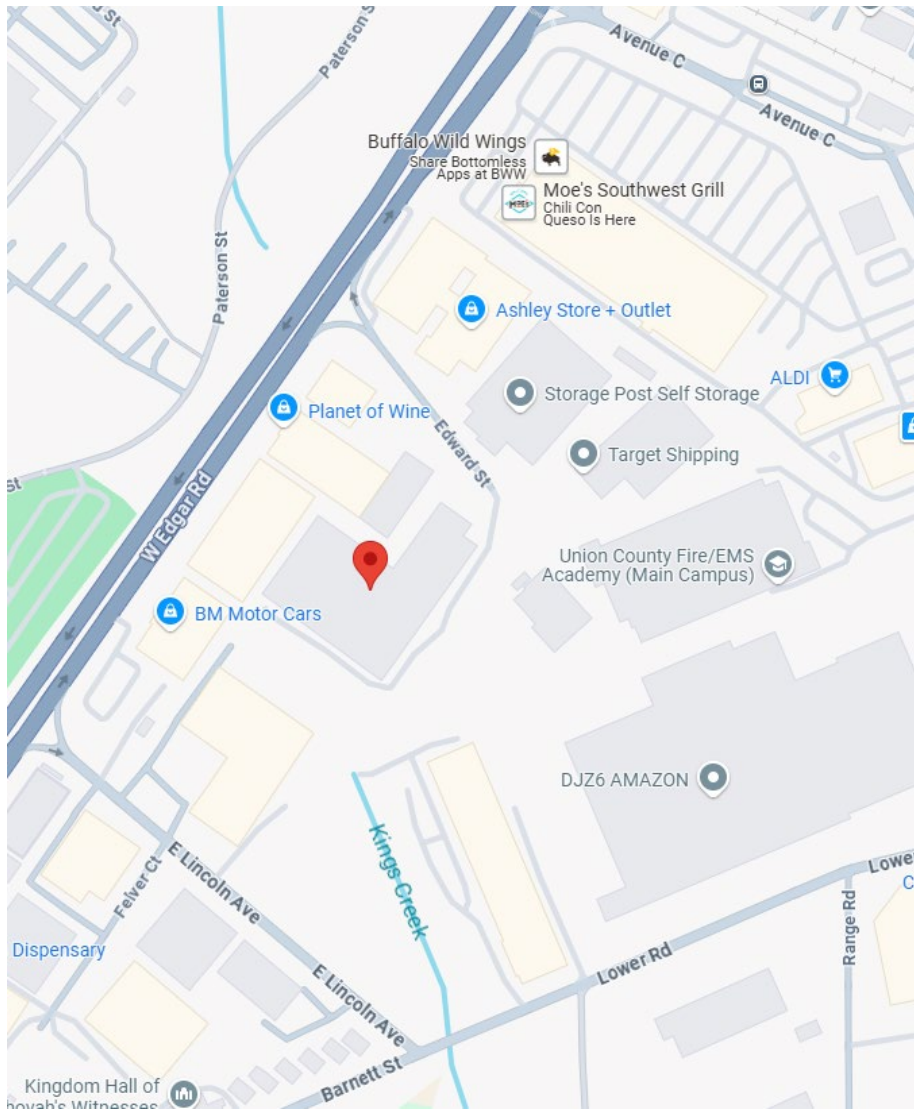
ARC AUGENBAUM
REALTY CORP.

WAREHOUSE | EXCLUSIVE LISTING

1050 Edward Street | LINDEN, NEW JERSEY

JOSH AUGENBAUM | (917) 417-7834 | JOSH@AUGENBAUMREALTY.COM

MAPS



WAREHOUSE | EXCLUSIVE LISTING

1050 Edward Street | LINDEN, NEW JERSEY

JOSH AUGENBAUM | (917) 417-7834 | JOSH@AUGENBAUMREALTY.COM