



**CUSHMAN &
WAKEFIELD**



FLOOR 16 AVAILABLE

**8,530 SF OF PRIME OFFICE SPACE
AVAILABLE FOR LEASE IN DOWNTOWN SEATTLE**

THE PACIFIC BUILDING

720 3RD AVENUE
SEATTLE, WA 98104

Features

- Creative space with exposed ceilings and modern finishes
- City and Elliot Bay Views throughout the suites
- Abundant on-site parking
- Easy Transit and Ferry Access
- Building amenities include bike storage, fitness center, and showers



Property Highlights



FLOOR 16
8,530 SF Total Available



LEASE RATE
\$20.00 - \$22.00 FS



AVAILABILITY
Now



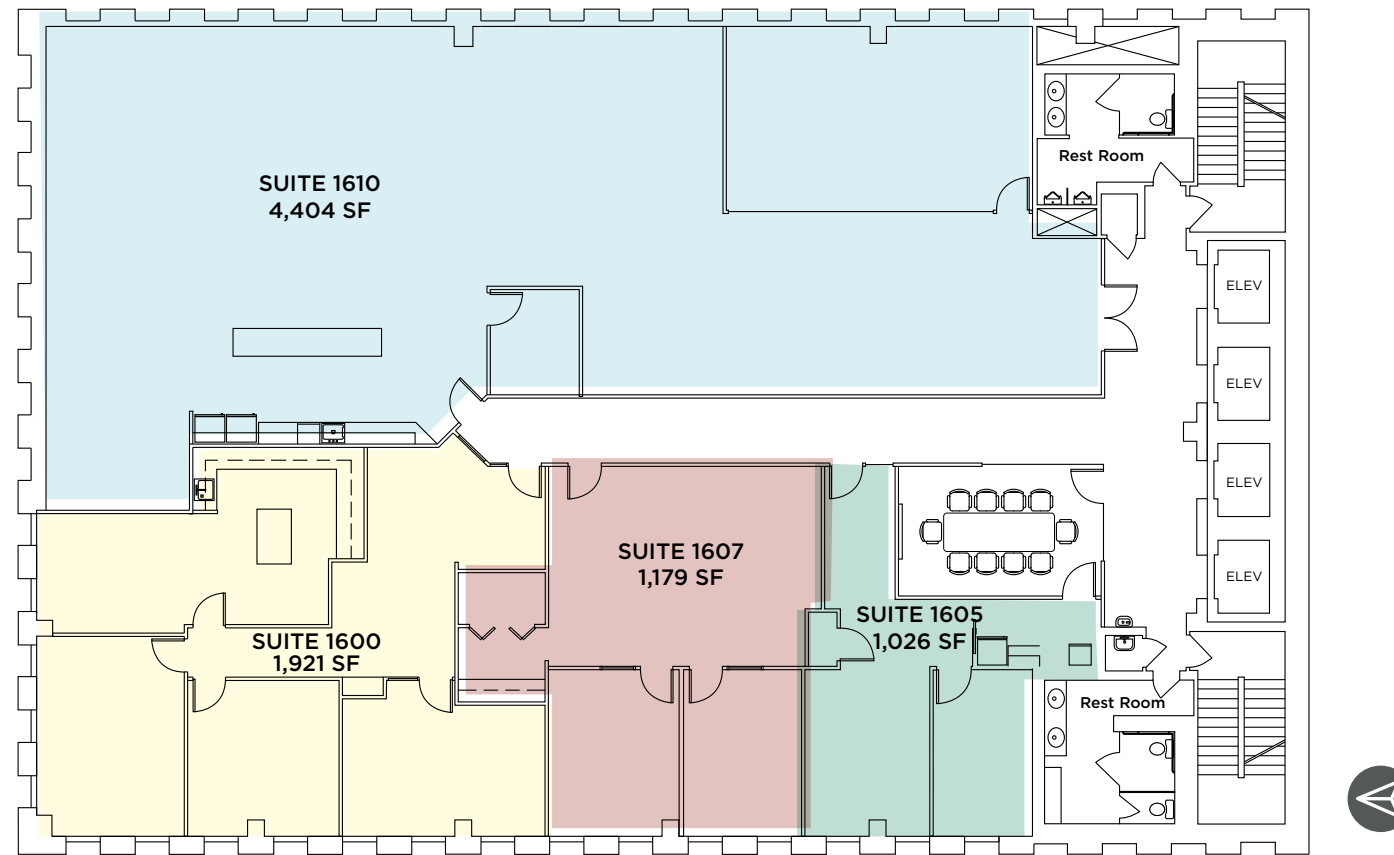
LEASE TERM
Master Lease
through 1/31/2029



Availabilities

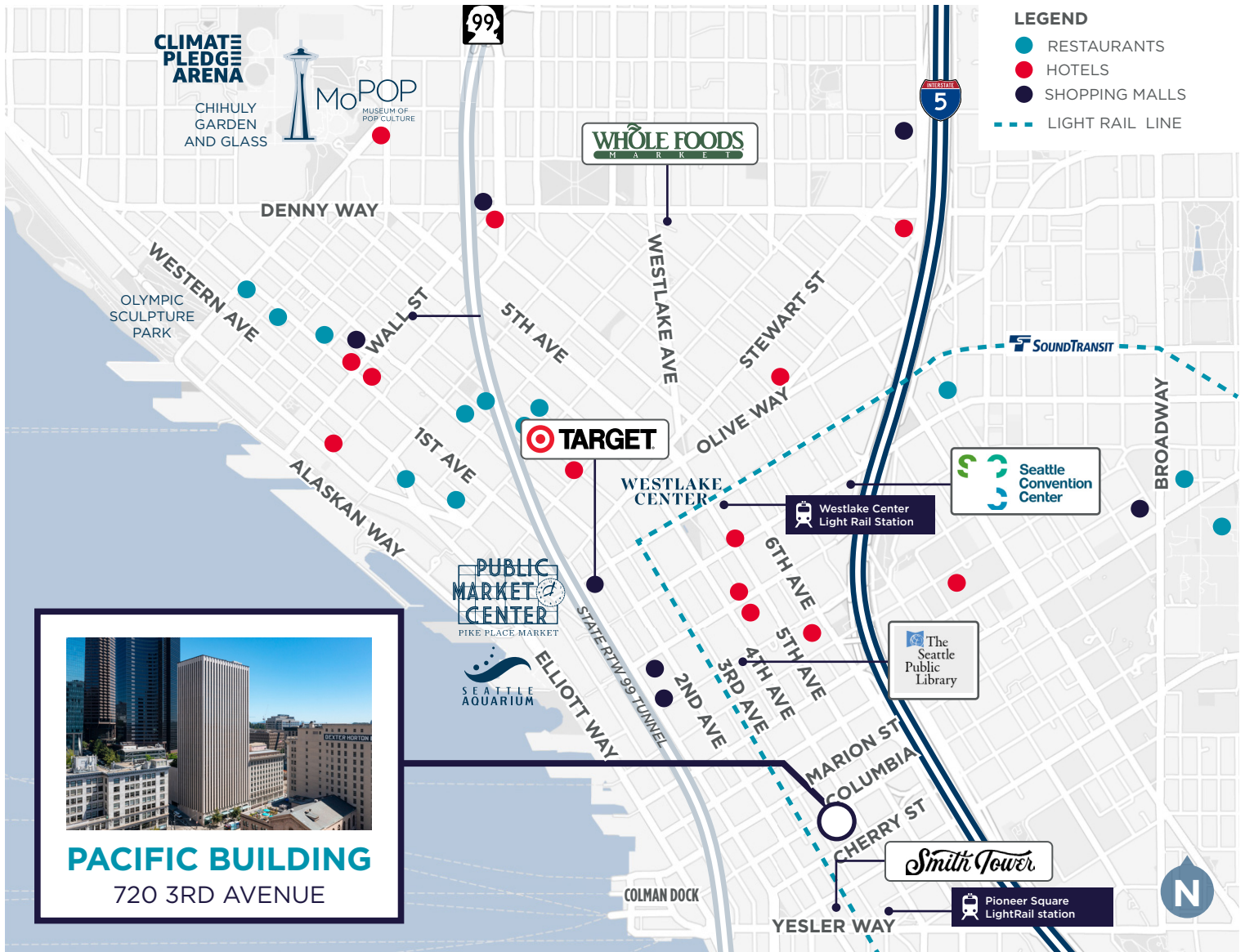
SUITE/FLOOR	SIZE/SF	LEASE RATE	COMMENTS
Suite 1600	1,921 SF	\$20.00/SF	
Suite 1605	1,026 SF	\$20.00/SF	
Suite 1607	1,179 SF	\$20.00/SF	
Suite 1610	4,404 SF	\$22.00/SF	Open space with a large conference room and kitchen.

Floor Plans



16th Floor | 8,530 SF

Amenities Map



Close. Convenient. Connected

WALK SCORE | **95**
WALKER'S PARADISE

TRANSIT SCORE | **95**
RIDER'S PARADISE

TRANSIT SCORE | **71**
VERY BIKEABLE

ELLEN AKOPYAN
Associate
+1 206 800 1788
+1 425 677 0903
ellen.akopyan@cushwake.com

Cushman & Wakefield
1601 Union Street, Suite 1100
Seattle, WA 98101
cushmanwakefield.com



©2026 Cushman & Wakefield. All rights reserved. The information contained in this communication is strictly confidential. This information has been obtained from sources believed to be reliable but has not been verified. NO WARRANTY OR REPRESENTATION, EXPRESS OR IMPLIED, IS MADE AS TO THE CONDITION OF THE PROPERTY (OR PROPERTIES) REFERENCED HEREIN OR AS TO THE ACCURACY OR COMPLETENESS OF THE INFORMATION CONTAINED HEREIN, AND SAME IS SUBMITTED SUBJECT TO ERRORS, OMISSIONS, CHANGE OF PRICE, RENTAL OR OTHER CONDITIONS, WITHDRAWAL WITHOUT NOTICE, AND TO ANY SPECIAL LISTING CONDITIONS IMPOSED BY THE PROPERTY OWNER(S). ANY PROJECTIONS, OPINIONS OR ESTIMATES ARE SUBJECT TO UNCERTAINTY AND DO NOT SIGNIFY CURRENT OR FUTURE PROPERTY PERFORMANCE. PD-180672