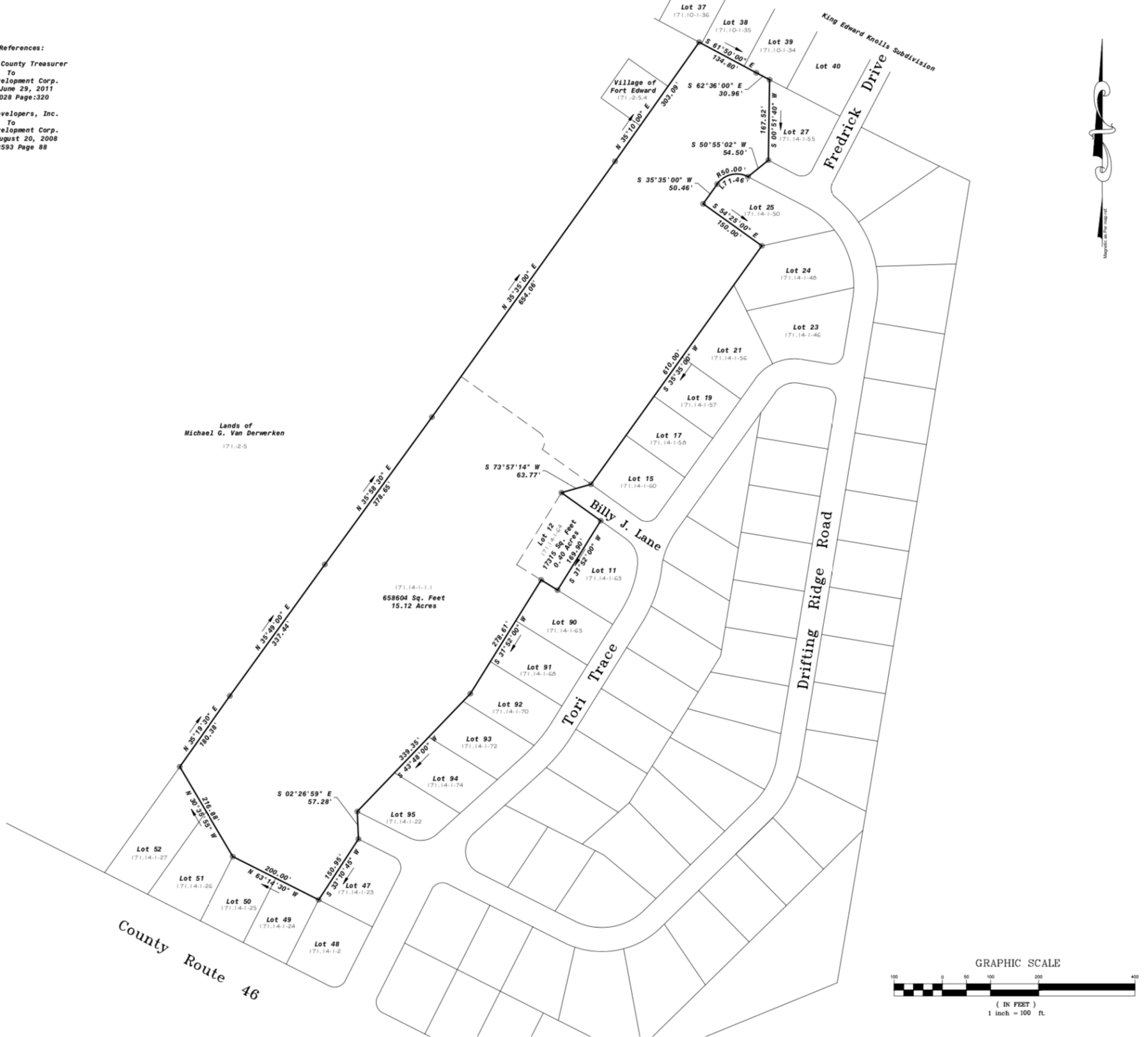
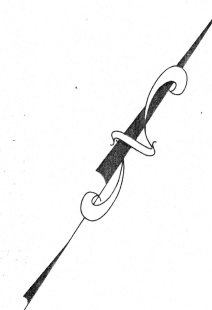


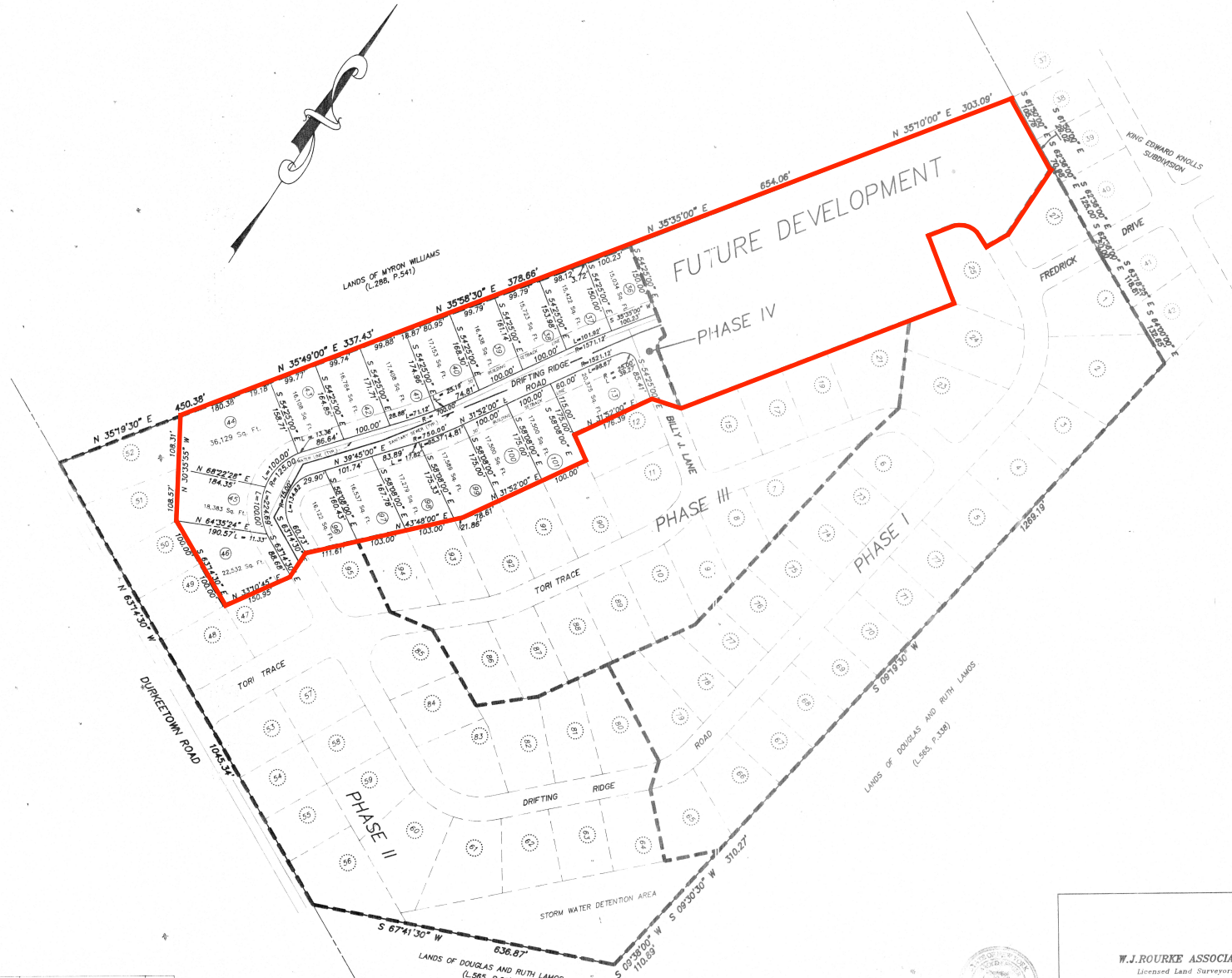
Deed References:
 Washington County Treasurer
 To
 Broco Development Corp.
 Dated: June 29, 2011
 Book:3028 Page:320

 Rourke Developers, Inc.
 To
 Broco Development Corp.
 Dated: August 20, 2008
 Book:2593 Page 88





NO.	DATE	DESCRIPTION	BY



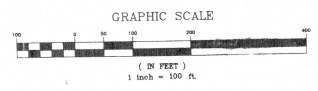
APPROVED BY
 NEW YORK STATE
 DEPARTMENT OF HEALTH
 HEALTH OFFICER
 DATE: 6-22-99

NEW YORK STATE HEALTH DEPT.
 NEW YORK STATE DEPARTMENT OF HEALTH
 Albany, New York

This is to certify that the proposed amendment for water supply and sewage disposal for this residential development with plans on file in the office of the State Department of Health and approved by the Health Officer of the Village of Fort Edward, New York, is in accordance with the provisions of the State Sanitary Code and with the provisions of Section 1312 of the Village Health Law and with the provisions of the Environmental Conservation Law.

[Signature]

VILLAGE OF FORT EDWARD
 6/19/99, Charles Conno, Planning Chairman



SHEET 6 of 17

PHASE IV MAP
DRIFTING RIDGE
 SUBDIVISION
 STATE OF NEW YORK

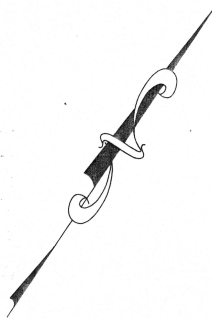
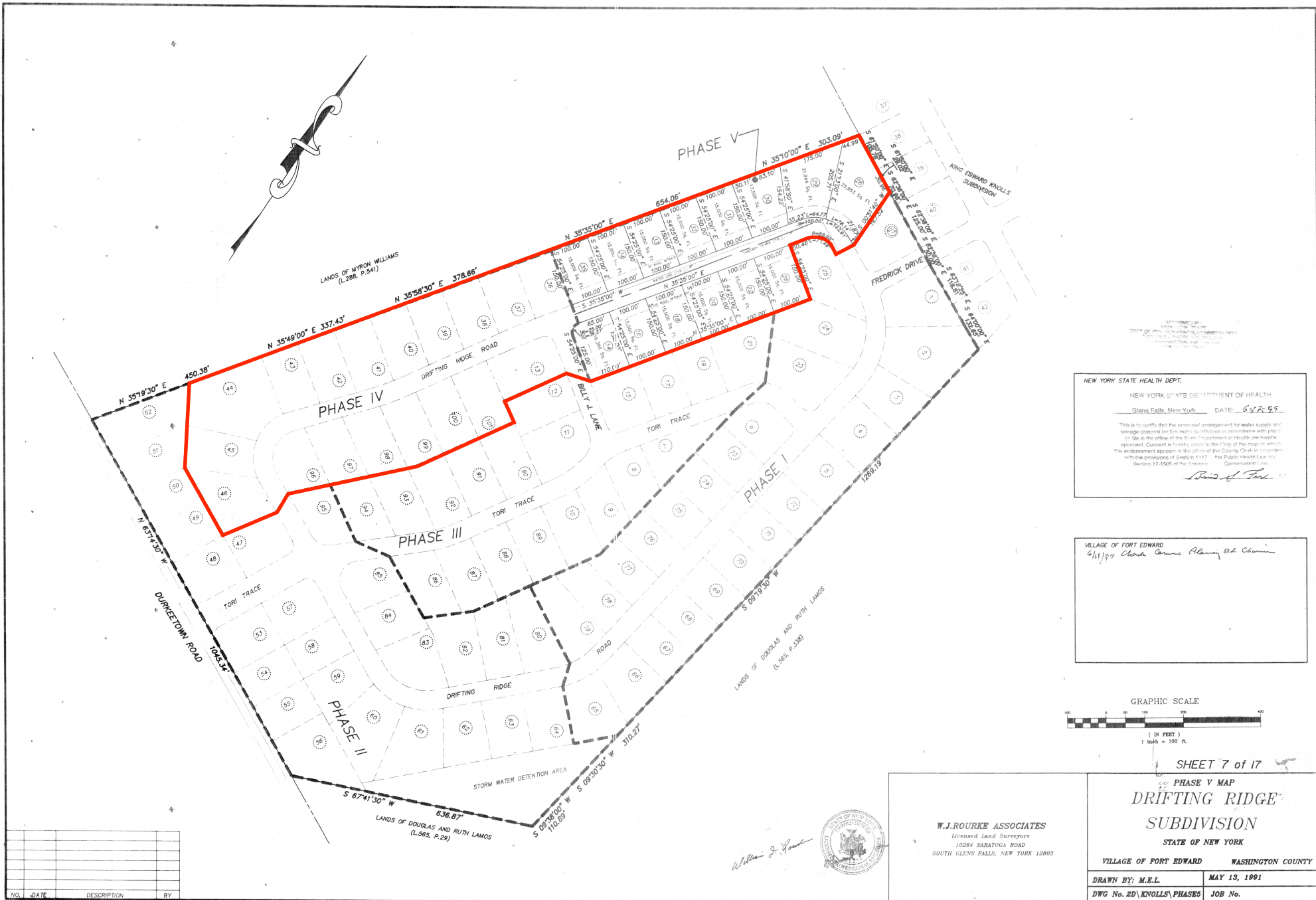
VILLAGE OF FORT EDWARD WASHINGTON COUNTY

DRAWN BY: M.E.L.	MAY 13, 1991
DWG No. 2D\KNOLLS\PHASE4	JOB No.

W.J. ROURKE ASSOCIATES
 Licensed Land Surveyors
 1006 1/2 SARATOGA ROAD
 SOUTH GLENS FALLS, NEW YORK 12803



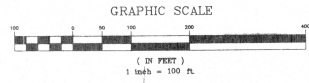
[Signature]



APPROVED BY
 STATE ENGINEER, STATE DEPT. OF ENVIRONMENTAL CONSERVATION
 COUNTY OF FORT EDWARD, NEW YORK
 6/11/87

NEW YORK STATE HEALTH DEPT.
 NEW YORK STATE DEPARTMENT OF HEALTH
 Glens Falls, New York DATE: 6/12/87
 This is to certify that the proposed arrangement for water supply and sewage disposal for this subdivision is in accordance with requirements in the office of the State Department of Health and health approval. Copies of this plan to the filing of the map or when the endorsement appears in the office of the County Clerk in accordance with the provisions of Section 1117 of the Public Health Law and Section 17-1006 of the Subdivision Conservation Law.
Barbara J. Ford

VILLAGE OF FORT EDWARD
 6/11/87 *Charles Thomas Blum & Charles*



SHEET 7 of 17

PHASE V MAP
 DRIFTING RIDGE
 SUBDIVISION
 STATE OF NEW YORK

W.J. ROURKE ASSOCIATES
 Licensed Land Surveyors
 10264 SARATOGA ROAD
 SOUTH GLENS FALLS, NEW YORK 12803



William J. Rourke

VILLAGE OF FORT EDWARD WASHINGTON COUNTY
 DRAWN BY: M.E.L. MAY 13, 1991
 DWG No. 2D/KNOLLS/PHASE5 JOB No.

NO.	DATE	DESCRIPTION	BY