

PRIME RETAIL OPPORTUNITY AVAILABLE IN NEW NW DEVELOPMENT



Glacier Ridge Centre

236 Edith Way
Calgary, AB

CBRE

Prime retail opportunity in a new NW Calgary development

- 3.11 acre NW retail development located within one of Calgary's fastest growing sectors
- Quick and easy access from 144 Avenue NW and Shaganappi Trail NW
- Servicing multiple communities including Glacier Ridge, Nolan Hill, Sage Hill and Evanston
- Abundant and easily accessible parking
- Area Structure Plan calls for over 5,000 people in the community on build-out
- 72% of families within 5 KM range have children at home

Space Available

Building 100

C-Store - 4,049 sq. ft.

Unit 102 - 1,135 sq. ft.

Building 200

Unit 201 - 1,996 sq. ft. (C/L)

Unit 203 - 1,207 sq. ft.

Unit 204 - 1,013 sq. ft.

Unit 205 - 1,206 sq. ft.

Unit 207 - 2,494 sq. ft.

Building 400

Unit 401 - 1,785 sq. ft.

Unit 403 - 1,183 sq. ft.

Unit 404 - 1,212 sq. ft.

Unit 405 - 1,206 sq. ft.

Unit 407 - 1,950 sq. ft.

Unit 301 - Daycare

7,776 sq. ft. & playground

Unit 305 - 2,495 sq. ft.

BASIC RENT - Market

OP COSTS & TAXES - TBD

SIGNAGE - Fascia & Pylon

POSSESSION - Summer/Fall 2027

TERM - 5 - 10 years

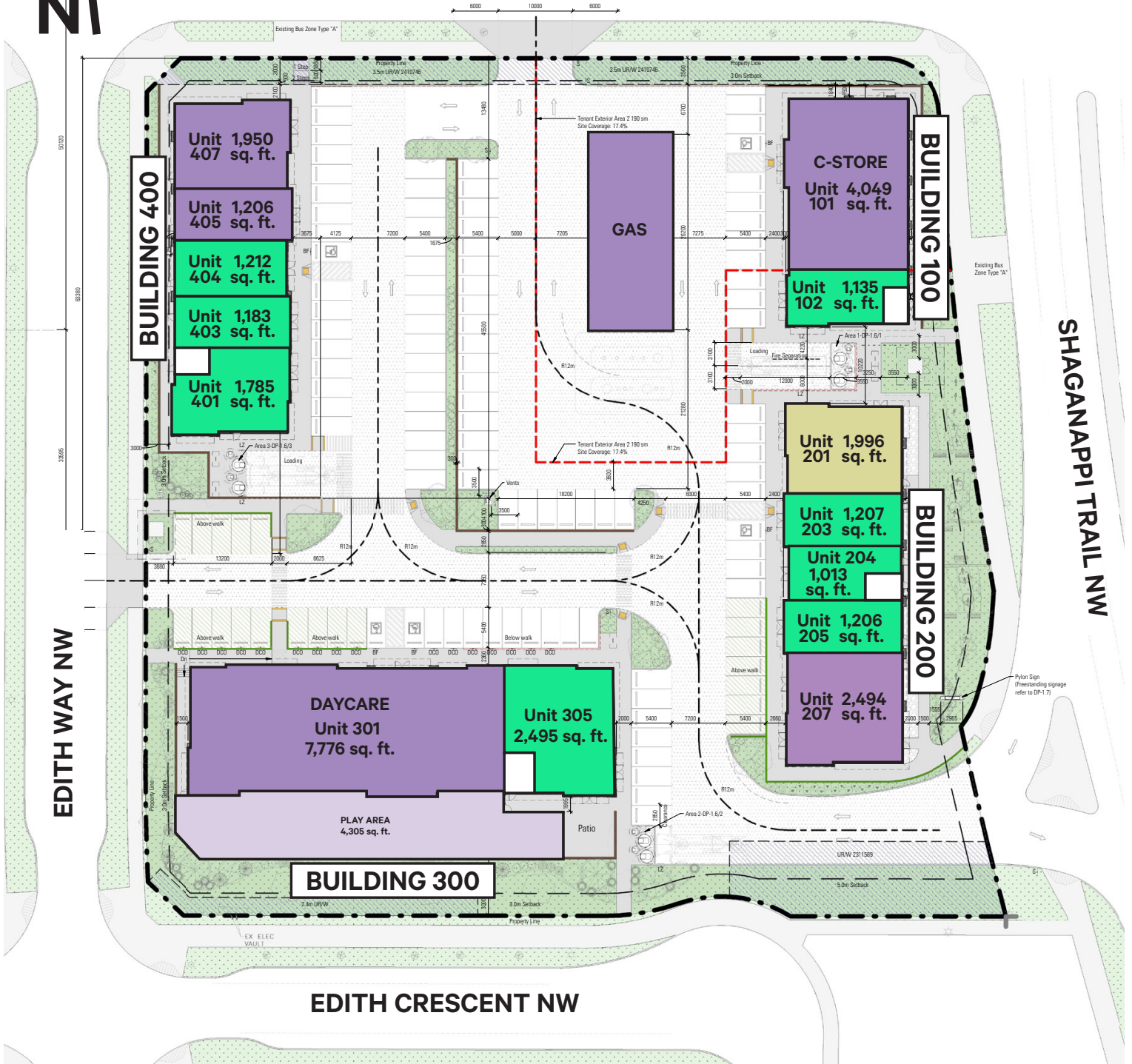
ZONING - C-N2



Plan of the Development

	Available
	Under Offer
	Conditionally Leased
	Leased

TEKARRA DRIVE NW

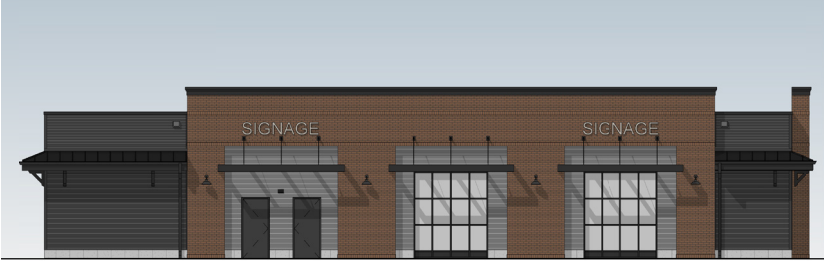


SHAGANAPPI TRAIL NW

EDITH WAY NW

EDITH CRESCENT NW

Elevations



EAST ELEVATION



NORTH ELEVATION



SOUTH ELEVATION



WEST ELEVATION

SW PERSPECTIVE



NE PERSPECTIVE



Demographics



76,849

Population Within 5 KM

54,172

Daytime Population Within 5 KM



\$139,848

Average Household Income Within 3 KM

10,211

Households Within 3 KM



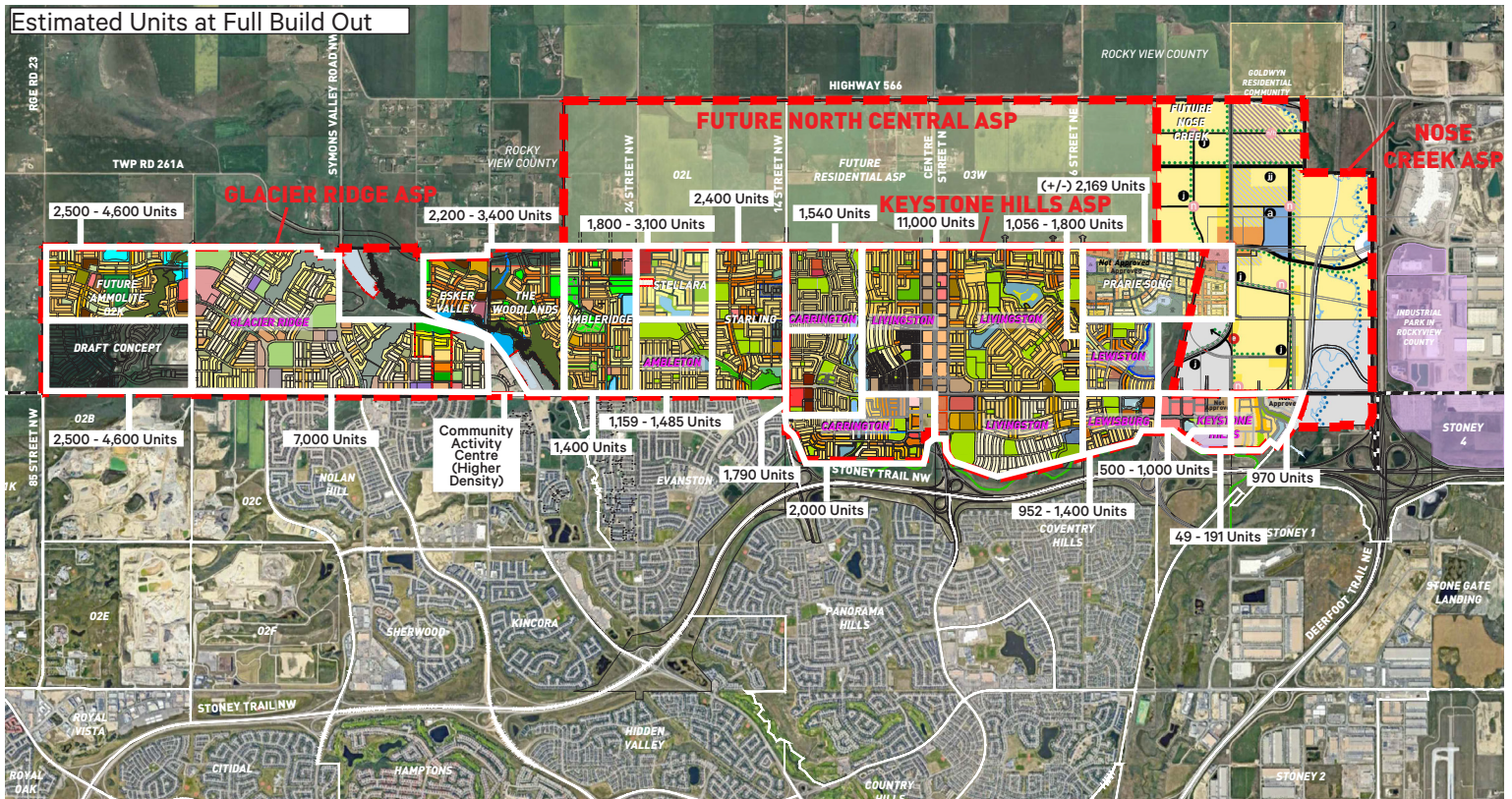
35 Years

Median Age Within 5 KM

Community	Population			Households		
	2025	2030 (Projected)	2035 (Projected)	2025	2030 (Projected)	2035 (Projected)
Glacier Ridge	489	2,574	5,139	329	1,721	3,425
Nolan Hill	11,066	11,571	12,115	3,342	3,451	3,584
Sage Hill	15,786	21,118	24,325	5,478	7,527	8,684
Evanston	24,865	25,390	25,816	6,969	7,051	7,142
Symons Valley (Kincora & Sherwood)	15,699	18,178	20,894	4,846	5,732	6,724
Carrington	5,796	8,550	11,796	1,735	2,538	3,606

NW Area Map

Estimated Units at Full Build Out



Aerials

LOOKING SW



LOOKING WEST



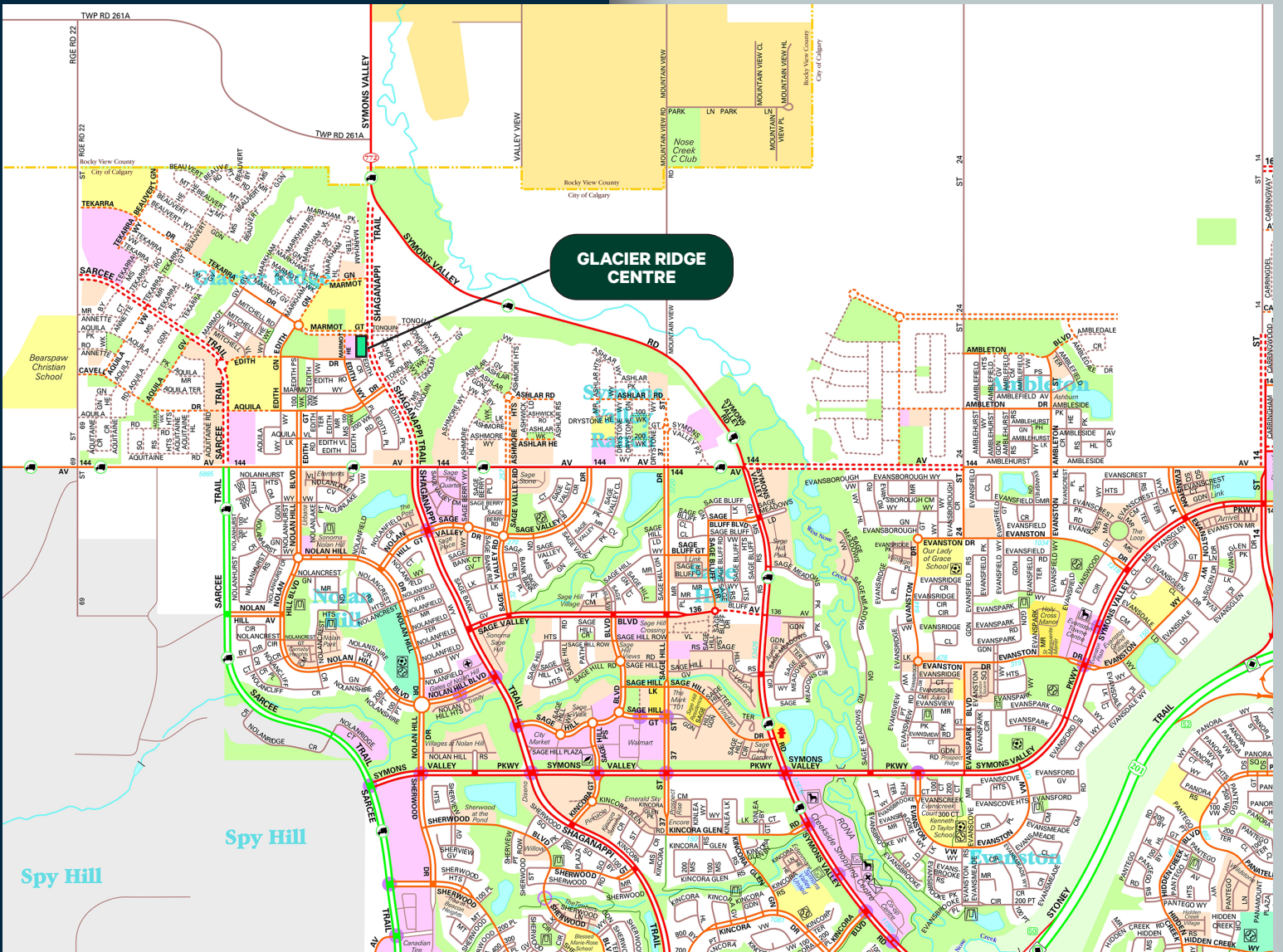
Aerials

LOOKING SOUTH



LOOKING EAST





For More Information Please Contact

Alistair Corbett

Senior Vice President

403.294.5709

alistair.corbett@cbre.com

Cory Miles

Associate Vice President

403.750.0523

cory.miles@cbre.com

Mac Marcinew

Sales Associate

587.583.7197

mac.marcinew@cbre.com

Jayne Rogers

Transaction Manager

403.750.0535

jayce.rogers@cbre.com

Brandy Chorney

Marketing Specialist

403.303.3609

brandy.chorney@cbre.com

CBRE Calgary

Eighth Avenue Place

East Tower 525 8 Avenue SW Suite 3200

Calgary, Alberta T2P 1G1

This disclaimer shall apply to CBRE Limited, and to all divisions of the Corporation ("CBRE"). The information set out herein (the "Information") has not been verified by CBRE, and CBRE does not represent, warrant or guarantee the accuracy, correctness and completeness of the Information. CBRE does not accept or assume any responsibility or liability, direct or consequential, for the Information or the recipient's reliance upon the Information. The recipient of the Information should take such steps as the recipient may deem necessary to verify the Information prior to placing any reliance upon the Information. The Information may change and any property described in the Information may be withdrawn from the market at any time without notice or obligation to the recipient from CBRE. Mapping Sources: Canadian Mapping Services canadamapping@cbre.com; DMTI Spatial, Environics Analytics, Microsoft Bing, Google Earth. Map© 2024 Sherlock Publishing Ltd.

CBRE