

**FOR  
LEASE**

# Saint Mary's Building

824 and 830 W St Germain  
Street St Cloud, MN



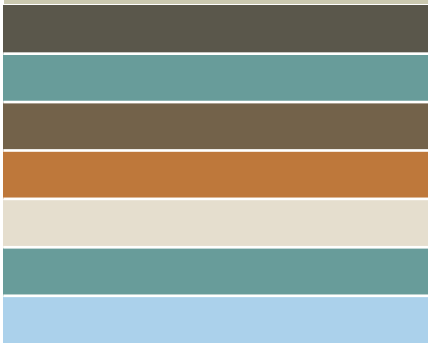
## Retail Space Availabilities in the Historic Saint Mary's Building Downtown Saint Cloud

Two 1,400 SF +/- Retail spaces available on Ground Level

\$10 - \$12 PSF Retail + Elec/Heat

824 is Turn Key Ready with original Terrazzo Floors!

830 is unfinished and ready for tenant improvements



824 Retail Entrance



Dressing Rooms and Retail Floor Space



WARNERT COMMERCIAL  
REAL ESTATE

[www.warnertcommercial.com](http://www.warnertcommercial.com)

**Contact:**

Sheila DeVine, Broker

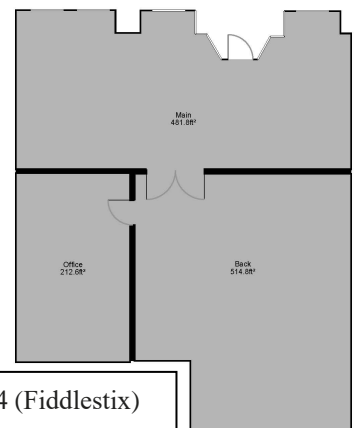
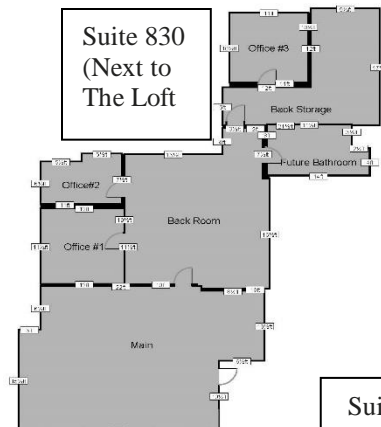
320 492 3230

[sdevine@warnertcommercial.com](mailto:sdevine@warnertcommercial.com)

Justin Studer, Associate

320 309 9178

[jstuder@warnert.com](mailto:jstuder@warnert.com)



Suite 824 (Fiddlestix)