

DOWNTOWN WESTBROOK RETAIL BUILDING



BUSINESS RELOCATING

FOR SALE/LEASE

900 MAIN STREET
WESTBROOK, ME 04092

PROPERTY HIGHLIGHTS

- 7,344± SF two-story commercial building located in the heart of vibrant downtown Westbrook
- Prominent street visibility with high daily vehicle and foot traffic
- Ideal opportunity for retail, showroom, restaurant, office, or a wide range of commercial uses
- Sale Price: \$995,000
- Lease Rate: See Broker



THE BOULOS
COMPANY

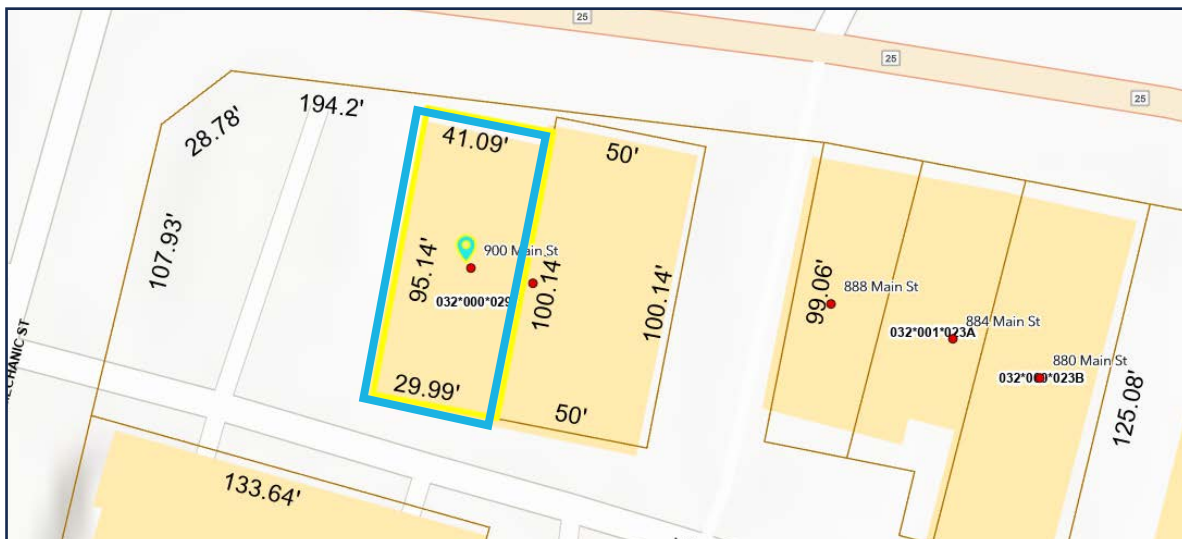
PROPERTY HIGHLIGHTS

OWNER	HUB Furniture Inc.
ASSESSOR'S REFERENCE	Map 32, Lot 29
BOOK/PAGE	Book 4371, Page 0042
BUILDING SIZE	7,344± SF
NO. OF STORIES	Two (2)
YEAR BUILT	1975
LOT SIZE	0.09± AC
ZONING	Center City District
HVAC	Gas-fired forced hot air
UTILITIES	Municipal water & sewer
PARKING	Adjacent municipal surface lot and nearby municipal garage
AREA BUSINESSES & AMENITIES	Vertical Harvest, Portland Pie Company, CVS, Westbrook House of Pizza, Convenient MD, Mast Landing, Westbrook River Walk
LOT FRONTAGE	41'
SALE PRICE	\$995,000
LEASE RATE	See Broker

PROPERTY PHOTOS



PARCEL VIEW



FOR SALE/LEASE | DOWNTOWN WESTBROOK RETAIL BUILDING

900 MAIN STREET, WESTBROOK, ME 04092



CONTACT US



BRICE O'CONNOR
Broker

+1 207.553.1725 D
+1 603.674.2272 C
boconnor@boulos.com



TONY McDONALD,
CCIM, SIOR
Partner, Broker

+1 207.553.1704 D
+1 207.749.1000 C
tmcDonald@boulos.com

©2026 The Boulos Company, Inc. All rights reserved. This information has been obtained from sources believed reliable, but has not been verified for accuracy or completeness. You should conduct a careful, independent investigation of the property and verify all information. Any reliance on this information is solely at your own risk. The Boulos Company and The Boulos Company logo are service marks of The Boulos Company, Inc. All other marks displayed on this document are the property of their respective owners. Photos herein are the property of their respective owners. Use of these images without the express written consent of the owner is prohibited.