

# 2220 AIRPORT INDUSTRIAL DRIVE SUITE 900

ATLANTA MARKET  
WOODSTOCK/CANTON (I-575) SUBMARKET

2220 Airport Industrial Drive, Suite 900  
Ball Ground, GA 30107



FOR LEASE

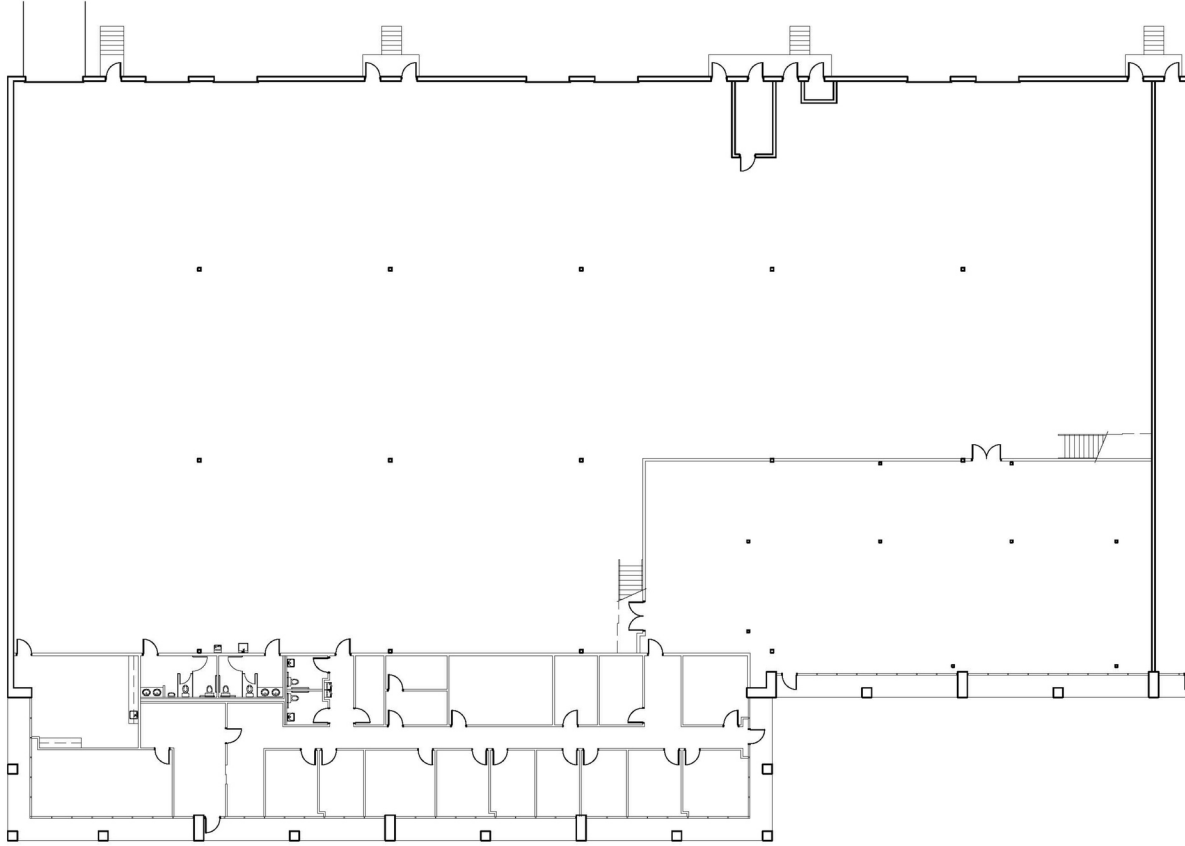
36,000 SF



LEASED BY

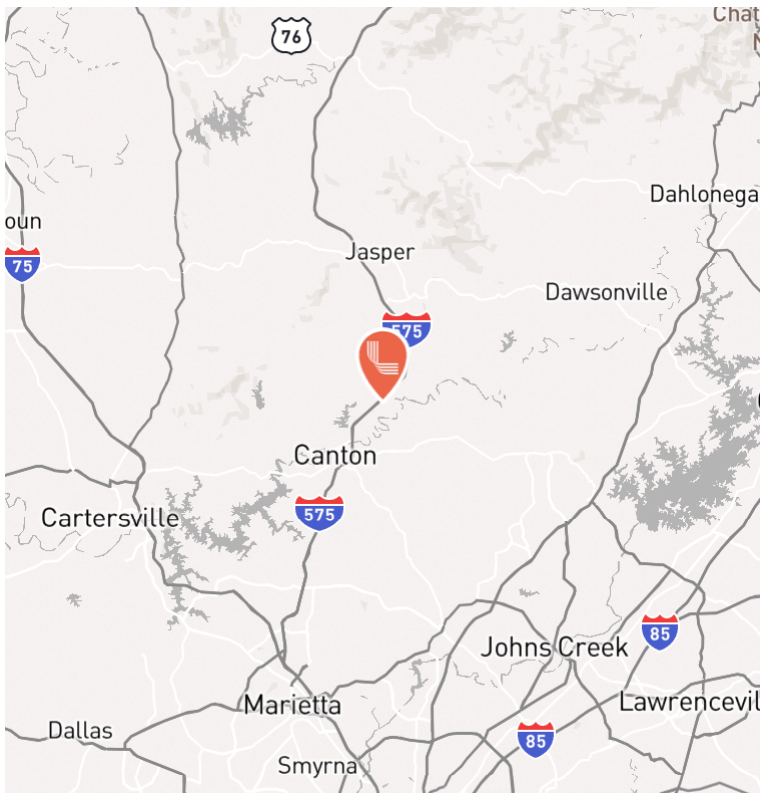
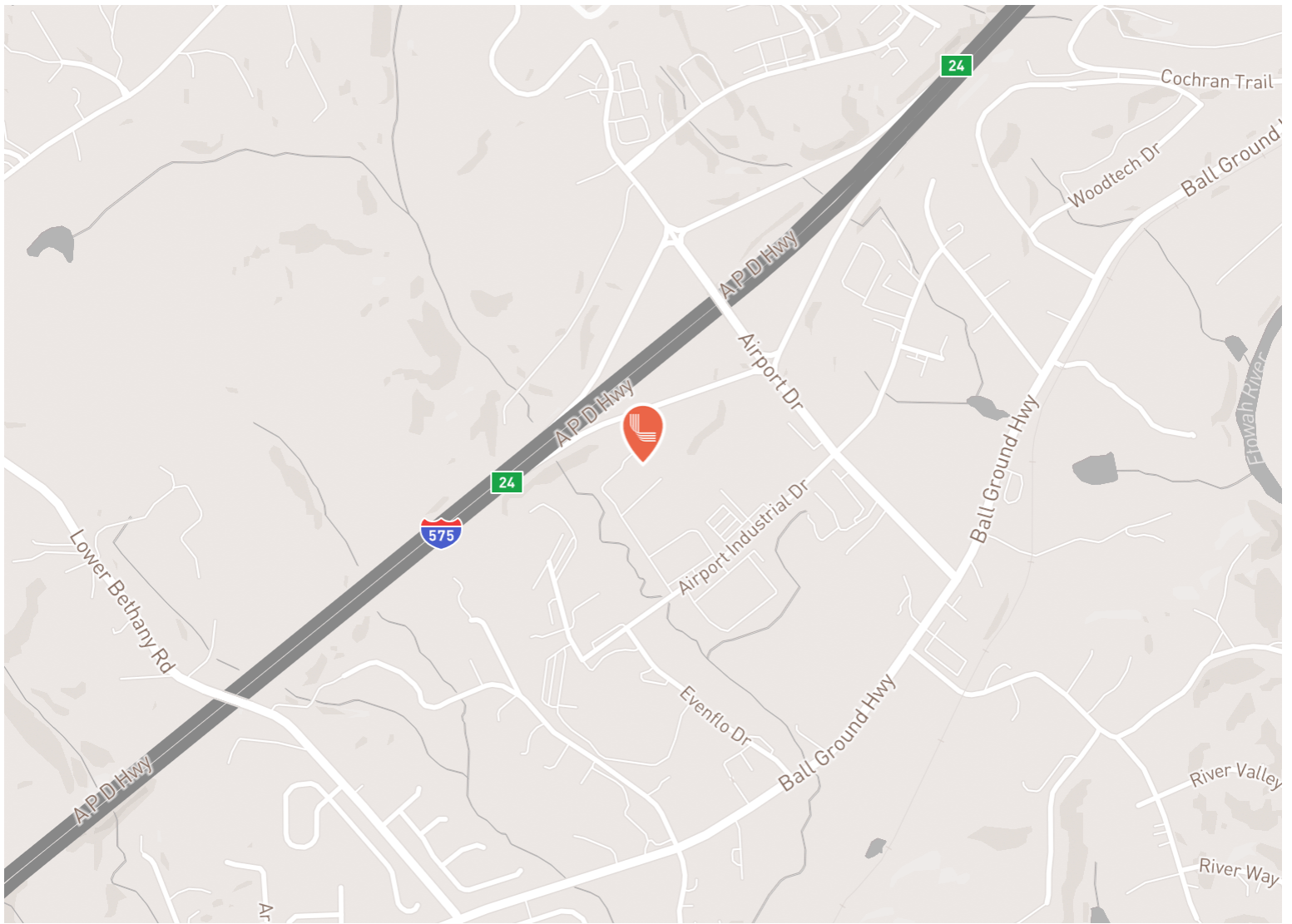


# SUITE 900 FLOOR PLAN



## SPACE HIGHLIGHTS

AVAILABLE SIZE	36,000 SF
OFFICE / PRODUCTION SIZE	9,898 SF
WAREHOUSE SIZE	26,102 SF
DOCK-HIGH DOORS	6 (9' x 10')
DRIVE-IN DOORS	1 Oversized (12' x 14')
CLEAR HEIGHT	24'
POWER	4,000 Amps, Phase 3, 480v
HVAC	Fully Air-Conditioned Warehouse



## KEY DISTANCES

Airport Dr	±0.5 mi
Ball Ground Hwy	±0.7 mi
I-575	±0.7 mi
GA-20	±6.5 mi
I-75	±25 mi
I-285	±35 mi

# CONTACT INFORMATION

2220 Airport Industrial Drive, Suite 900  
Ball Ground, GA 30107

**Cade McDonald**

cade@hughes-cre.com  
(404) 307-5166

**James Hicks**

james@hughes-cre.com  
(404) 304-2386

**Mason Marsteller**

mason@hughes-cre.com  
(404) 790-9615

This document is for informational purposes only and does not constitute an offer or acceptance of a lease. Any lease agreement must be in writing and signed by the landlord. No representations or warranties are made except as expressly stated in a signed lease. Information is provided "as is" and may be subject to errors or change without notice.



LEASED BY

