

NORTHSIDE LOGISTICS PARK

MOLLY WALTON DRIVE, HENDERSONVILLE, TN 37075

WAREHOUSE/
DISTRIBUTION
CENTER
5 BUILDINGS | 497,161 SF



Lincoln CBRE



SITE PLAN

45.6 AC

WAREHOUSE/
DISTRIBUTION
CENTER



BUILDING 1

144,153 RSF
DIMENSIONS: 720x200
OFFICE: 3,330 RSF
CAR PARKS: 155 Stalls
TRAILER PARKS: 48
LOADING: 39
DRIVE-IN-DOORS: 2
POWER: 2,000 amps
CLEAR HEIGHT: 32'

BUILDING 2

118,919 RSF
DIMENSIONS: 540x220
OFFICE: 3,000 RSF
CAR PARKS: 115 Stalls
TRAILER PARKS: -
LOADING: 28
DRIVE-IN-DOORS: 2
POWER: 1,600 amps
CLEAR HEIGHT: 32'

BUILDING 3

95,162 RSF
DIMENSIONS: 432x220
OFFICE: 2,500 RSF
CAR PARKS: 86 Stalls
TRAILER PARKS: -
LOADING: 20
DRIVE-IN-DOORS: 2
POWER: 1,600 amps
CLEAR HEIGHT: 32'

BUILDING 4

69,685 RSF
DIMENSIONS: 432x160
OFFICE: 2,500 RSF
CAR PARKS: 86 Stalls
TRAILER PARKS: -
LOADING: 20
DRIVE-IN-DOORS: 2
POWER: 1,200 amps
CLEAR HEIGHT: 32'

BUILDING 5

69,242 RSF
DIMENSIONS: 432x160
OFFICE: 2,000 RSF
CAR PARKS: 87 Stalls
TRAILER PARKS: -
LOADING: 20
DRIVE-IN-DOORS: 2
POWER: 1,200 amps
CLEAR HEIGHT: 32'

DEMOGRAPHICS

Hendersonville, TN, located in Sumner County, has experienced significant population growth in recent years, reflecting its appeal as a vibrant suburban community. The city's population has seen an increase of over 15% since 2010, an upward trend that is attributed to its proximity to Nashville, excellent schools, and family-friendly amenities.

The economy of Hendersonville is robust, characterized by a diverse range of industries including healthcare, retail, and manufacturing. The city has seen a surge in new businesses and commercial developments, contributing to job creation and economic stability. Hendersonville's strategic location along major highways enhances its attractiveness to both residents and businesses, further fueling its economic growth.

2024 HENDERSONVILLE REGIONAL ECONOMIC DEVELOPMENT GUIDE

40

MEDIAN AGE

96.4%

EMPLOYED CIVILIAN
POP. 16+

3.6%

POP. GROWTH OVER
NEXT 5 YEARS

65K

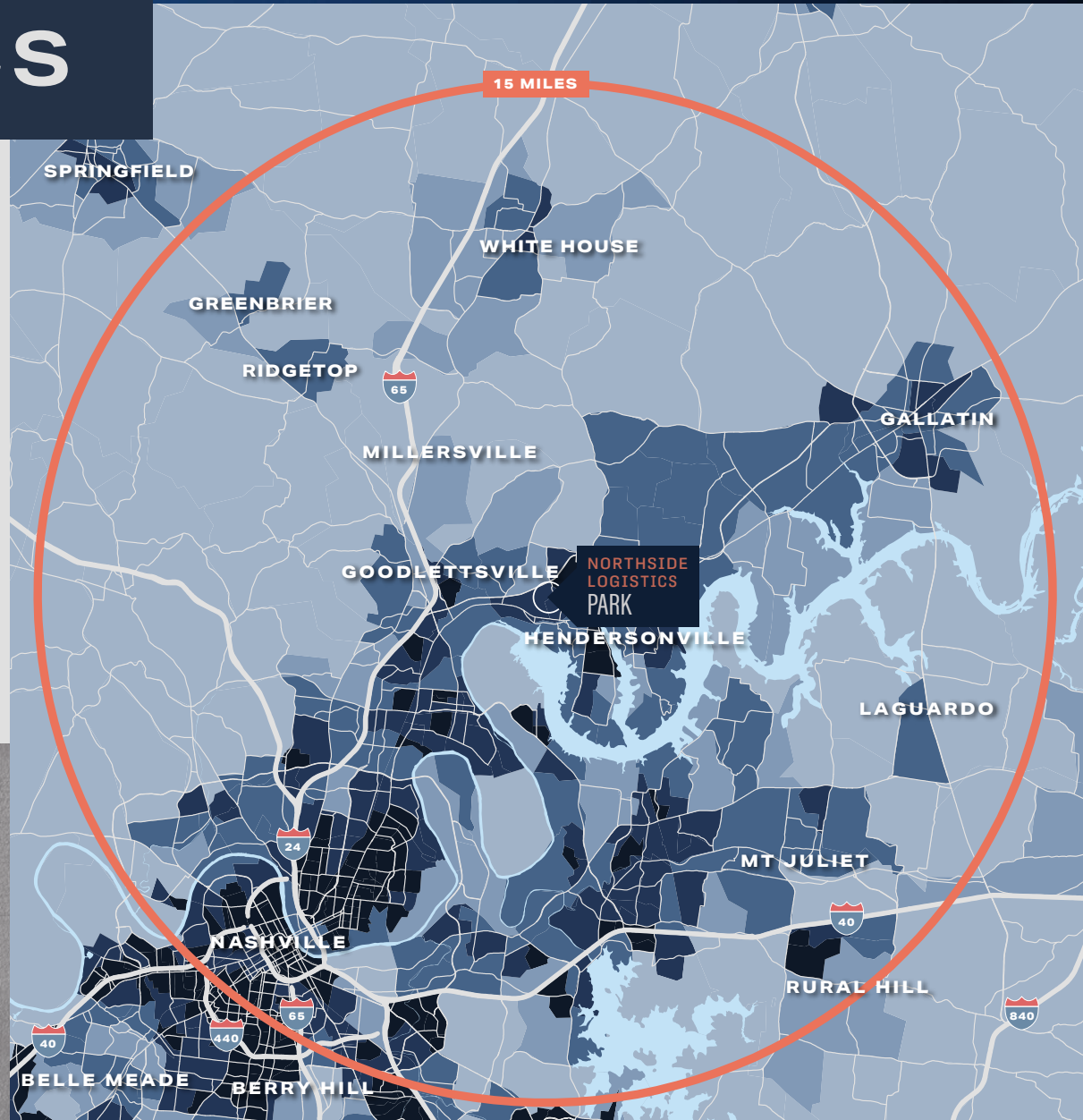
TOTAL POP.

\$131,030

2024 MEDIAN
HOUSEHOLD INCOME

6.0%

POP. GROWTH OVER
LAST 4 YEARS



HEAT MAP

POPULATION

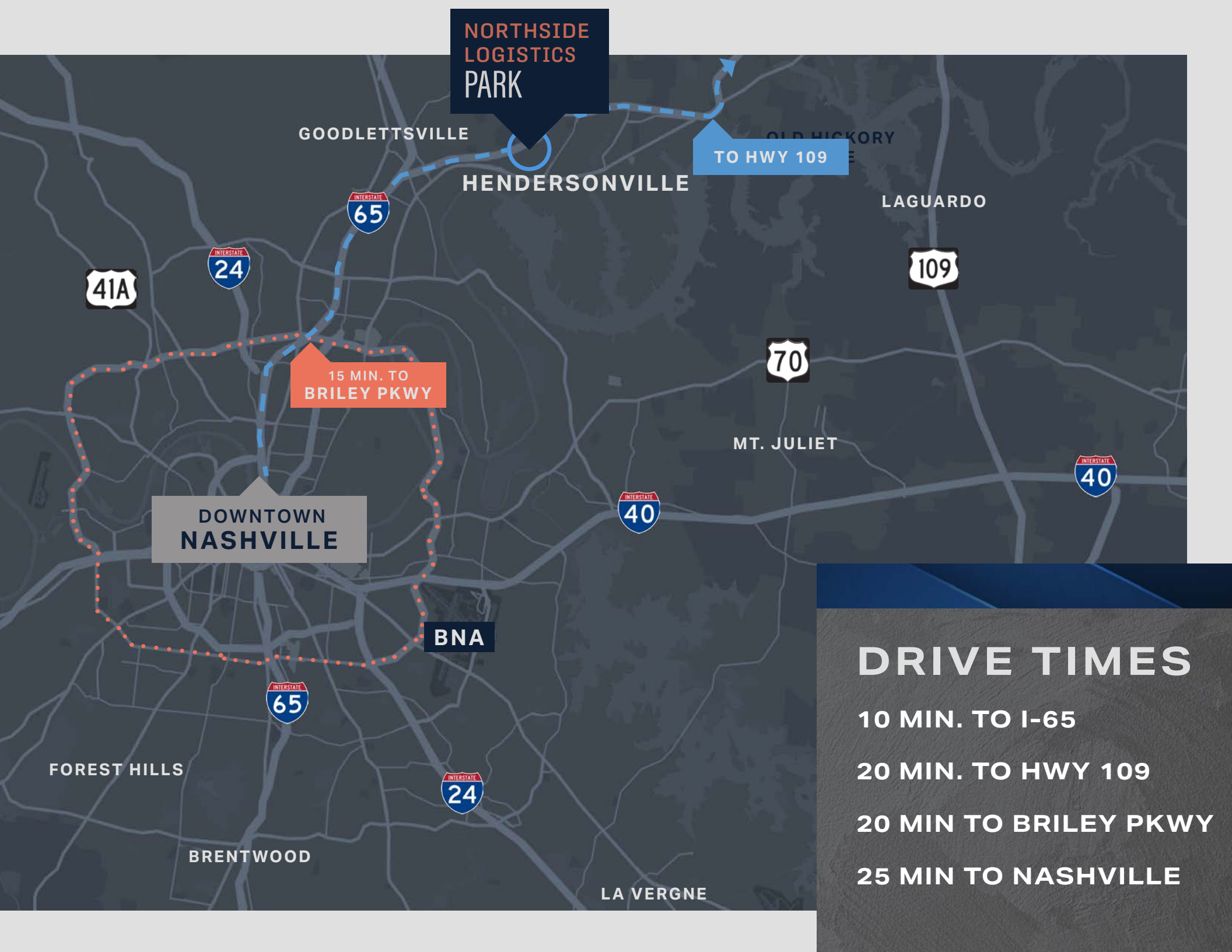
250 OR LESS

251-500

501-1,000

1,001-2,000

2,001 OR MORE



**NORTHSIDE
LOGISTICS
PARK**

TO HWY 109

**15 MIN. TO
BRILEY PKWY**

**DOWNTOWN
NASHVILLE**

BNA

DRIVE TIMES

- 10 MIN. TO I-65**
- 20 MIN. TO HWY 109**
- 20 MIN TO BRILEY PKWY**
- 25 MIN TO NASHVILLE**

PRIME LOCATION

TOP NEIGHBORING USERS

BRAUER

CROWLEY TOOL COMPANY
PRECISION INSERT TOOLING



WELLER
TRUCK PARTS

MGM
INDUSTRIES
Painted Vinyl Windows & Doors



STEELWORKS
SUPPLY • DESIGN

TOP DINING & RETAIL

COSTCO
WHOLESALE

Chick-fil-A



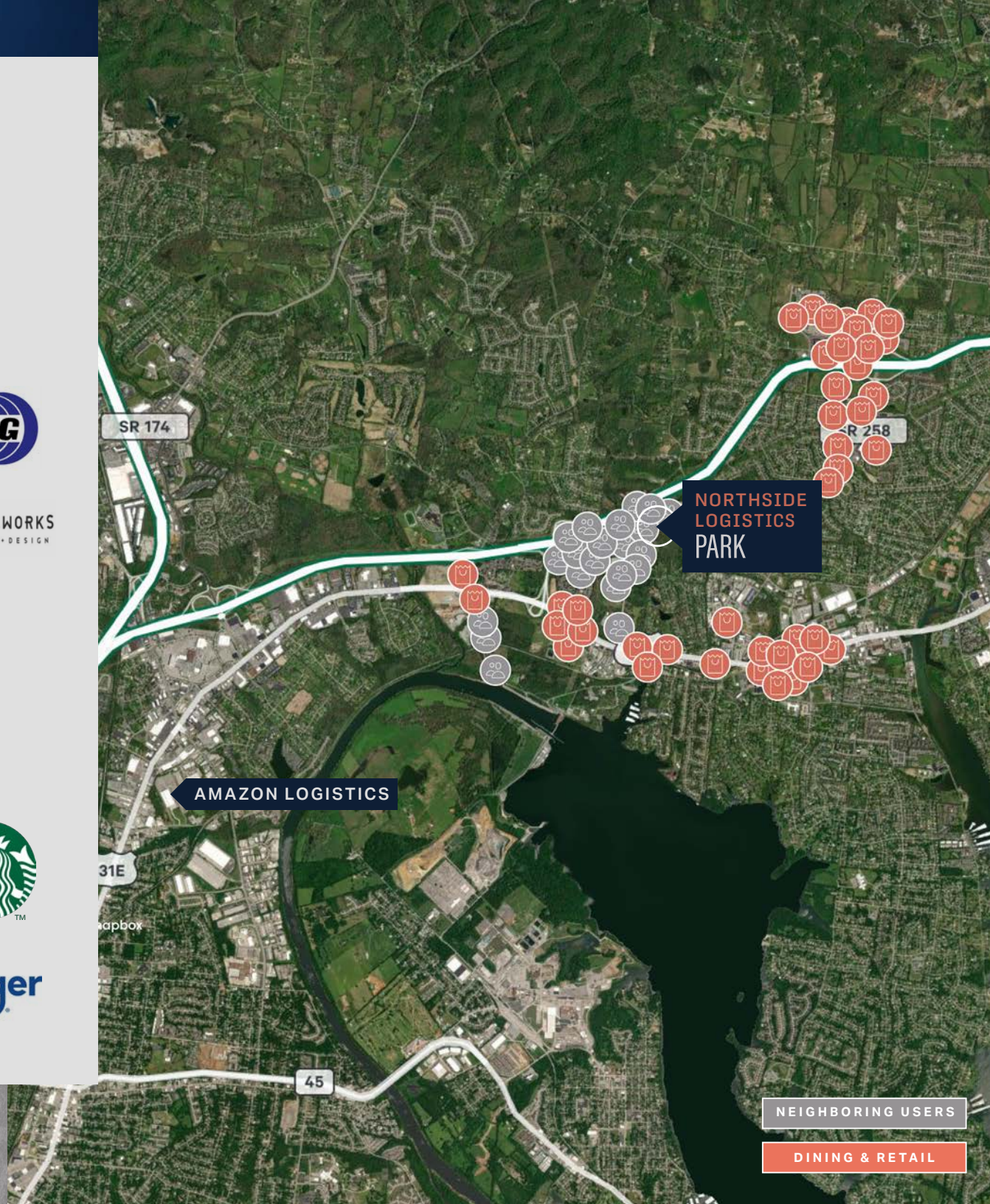
RaceTrac



MGM Newell

CRUNCH

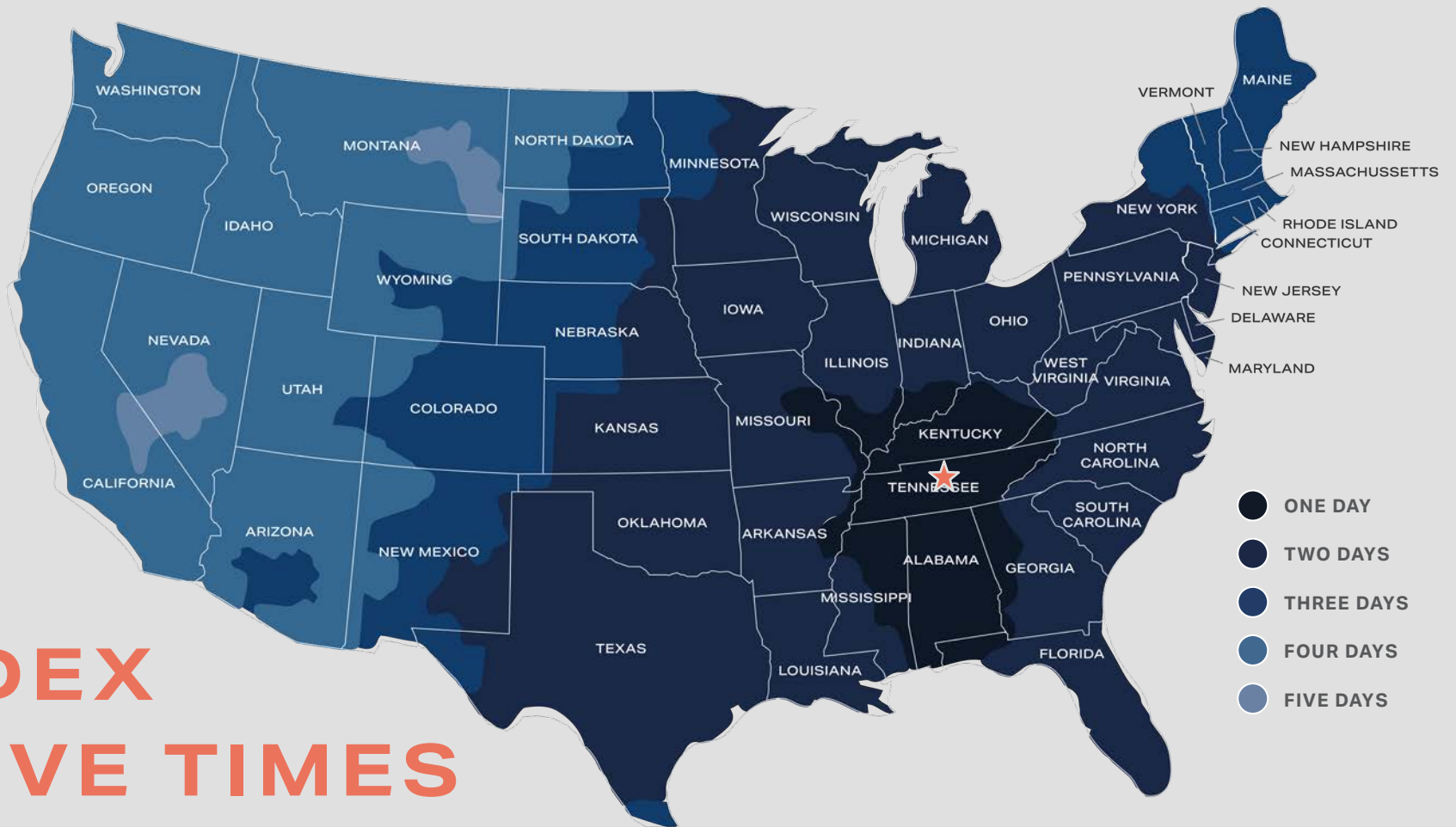
Kroger



NEIGHBORING USERS

DINING & RETAIL

FEDEX DRIVE TIMES



Sumner County is located **within 650 miles of 50% of the US population**



41M People within a **300-mile radius**



75% of the US market is within a **2-hour flight**



12 million people live within a **2.5 hour drive**



From Nashville, **72%** of the US population is reached with **Two-Day Ground Delivery**



Three major interstates converge in Nashville

A rendering of a modern, multi-story office building with a light-colored facade and large glass windows. The building has a prominent entrance with a dark canopy. The surrounding area includes a landscaped lawn with young trees and a parking lot with several cars. The sky is blue with scattered white clouds.

Lincoln



HENDERSONVILLE, TN

**FOR MORE
INFO,
CONTACT:**

WILL GOODMAN

Senior Vice President
C +1 615 493 9256
M +1 321 230 1522
will.goodman@cbre.com

JACK ARMSTRONG

Senior Vice President
C +1 615 493 9257
M +1 561 339 9071
jack.armstrong@cbre.com

DAVIS GOODMAN

Senior Associate
C +1 615 493 9255
M +1 407 361 7474
davis.goodman@cbre.com

© 2026 CBRE, Inc. All rights reserved. This information has been obtained from sources believed reliable, but has not been verified for accuracy or completeness. You should conduct a careful, independent investigation of the property and verify all information. Any reliance on this information is solely at your own risk. CBRE and the CBRE logo are service marks of CBRE, Inc. All other marks displayed on this document are the property of their respective owners. Photos herein are the property of their respective owners. Use of these images without the express written consent of the owner is prohibited.

CBRE