



# 15757 Main St., Hesperia, CA 92345

HESPERIA, CA | RETAIL PROPERTY

FOR LEASE | 29,120 SF



## Property Description

Located on Main Street in Hesperia within the major East-West corridor with over 40,000 VPD. This 29,120 SF box located in next to Dollar Tree and DD's Discounts (ROSS Stores).

## Property Highlights

- Prime location on Main Street
- Ample parking for tenants and visitors
- High foot traffic and strong surrounding demographic
- Convenient access to major highways
- The surrounding trade area (within ~5 miles) serves ~144,000 people, signaling a solid customer/resident base nearby



## OFFERING SUMMARY

Available Size:	29,120 SF
Lot Size:	2.7 Acres
Lease Rate:	Negotiable

### David Roth

561.620.9200 x117  
droth@kinproperties.com

### Dan Corwin

561.620.9200 x114  
dcorwin@kinproperties.com



# 15757 Main St., Hesperia, CA 92345

HESPERIA, CA | RETAIL PROPERTY

FOR LEASE | 29,120 SF



**David Roth**  
561.620.9200 x117  
droth@kinproperties.com

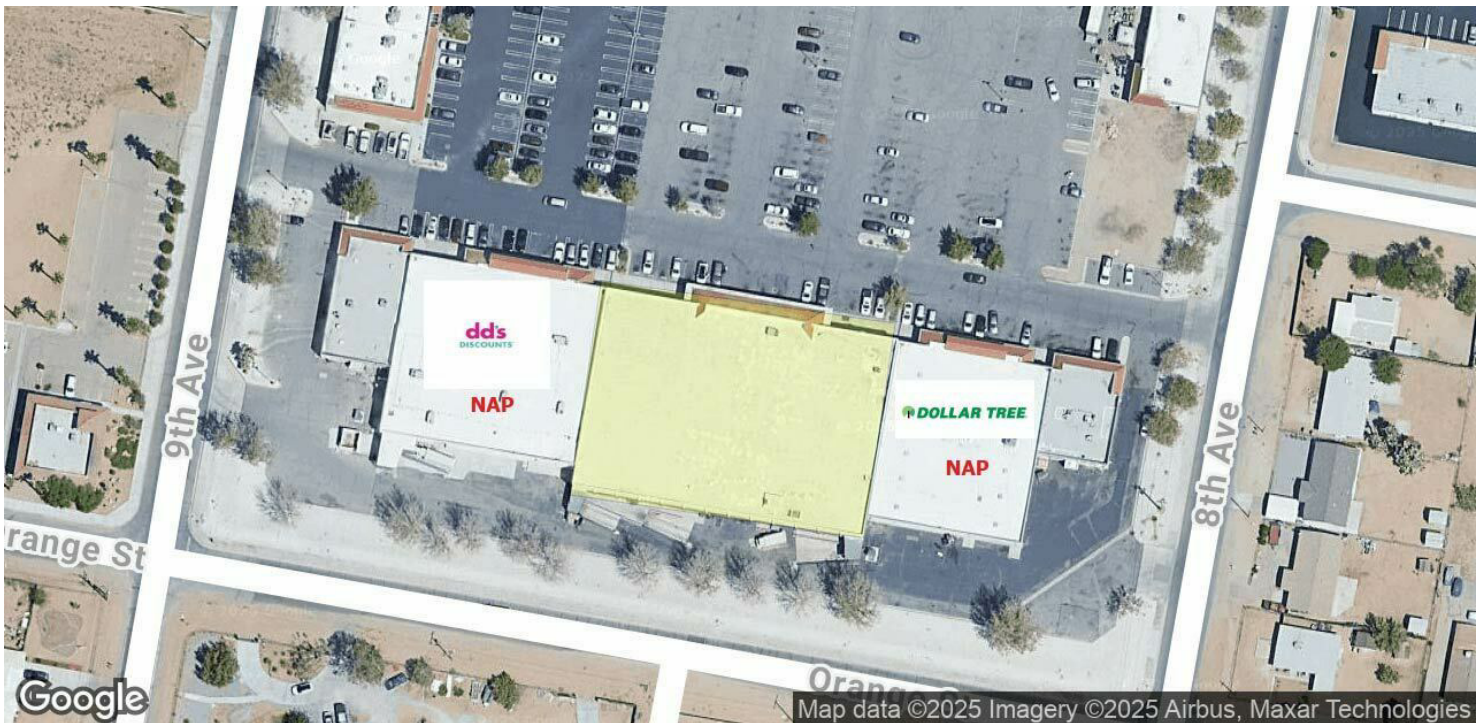
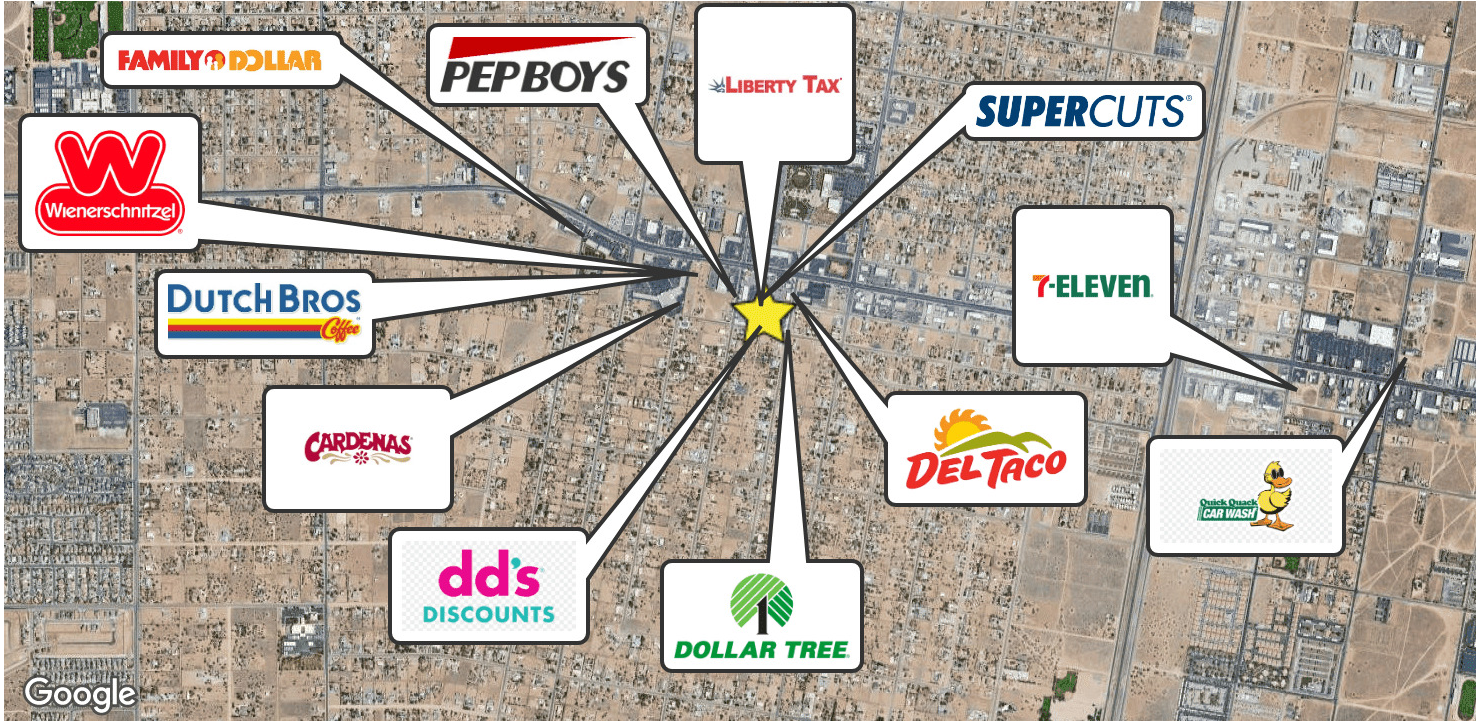
**Dan Corwin**  
561.620.9200 x114  
dcorwin@kinproperties.com



# 15757 Main St., Hesperia, CA 92345

HESPERIA, CA | RETAIL PROPERTY

FOR LEASE | 29,120 SF



**David Roth**  
 561.620.9200 x117  
 droth@kinproperties.com

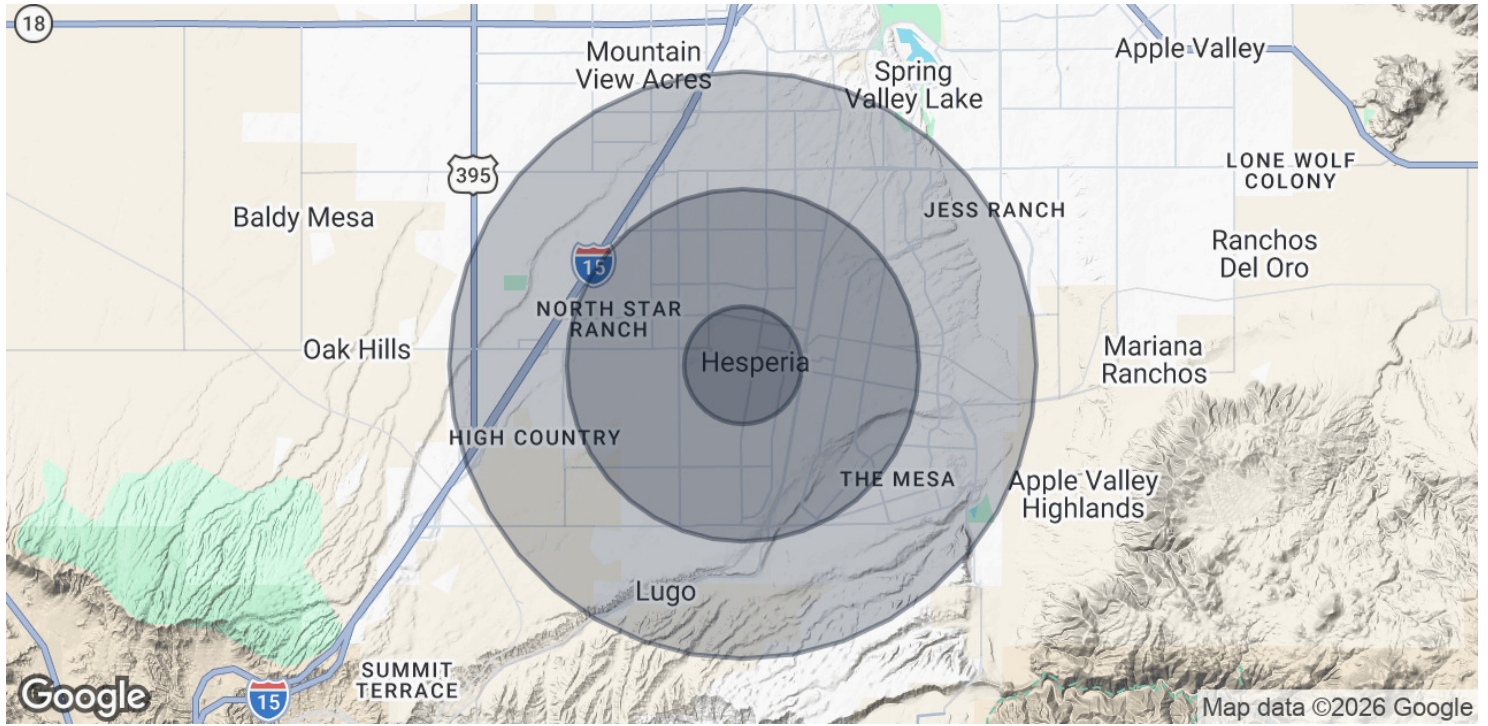
**Dan Corwin**  
 561.620.9200 x114  
 dcorwin@kinproperties.com



# 15757 Main St Hesperia, CA 92345

HESPERIA, CA | RETAIL PROPERTY

**FOR LEASE | 29,120 SF**



Population	1 Mile	3 Miles	5 Miles
Total Population	8,264	62,096	141,919
Average Age	36	36	37
Average Age (Male)	35	35	36
Average Age (Female)	37	37	38

Households & Income	1 Mile	3 Miles	5 Miles
Total Households	2,446	18,112	42,995
# of Persons per HH	3.4	3.4	3.3
Average HH Income	\$72,893	\$84,503	\$86,830
Average House Value	\$401,417	\$405,682	\$422,462

2020 American Community Survey (ACS)

**David Roth**  
561.620.9200 x117  
droth@kinproperties.com

**Dan Corwin**  
561.620.9200 x114  
dcorwin@kinproperties.com