

FOR LEASE

Tamarack Hills F2

611 Bielenberg Drive, Woodbury, MN 55125



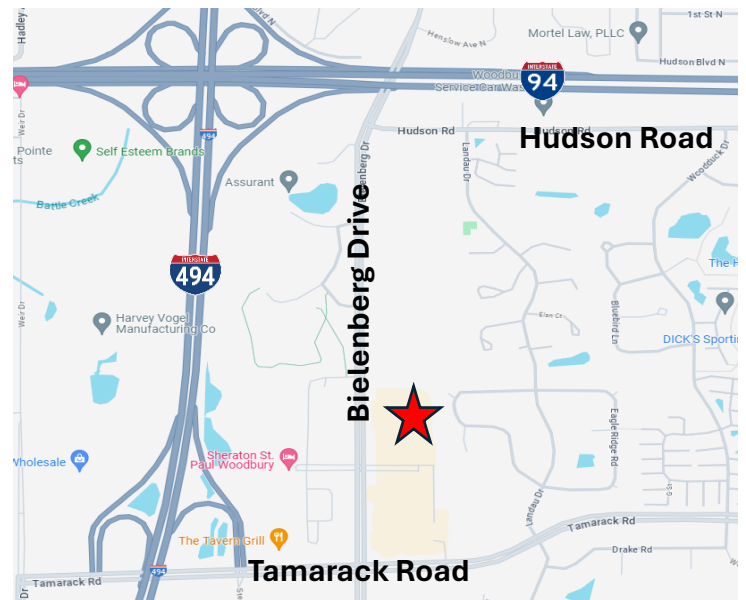
LISTING DETAILS

- Building Size: 9,731 SF
- Year Built: 2008
- Space Available: 4,965 SF
- Lease Rate: Negotiable
- Cam: \$5.55 /SF
- Taxes: \$6.40 /SF
\$11.95 /SF

PROPERTY DETAILS

- Located in Tamarack Hills
- Easy Access to I-494, I-94, and I-694
- Open Floor Plan that can be Built to Suit
- On-building Signage Available
- Future Gold Line Metro Stop

LOCATION



Mark Young

D: 651-233-2435 | M: 651-307-2371

Zac Houle

D: 651-209-0520 | M: 651-248-7567

7250 Hudson Boulevard N, Suite 160, Oakdale, MN 55128

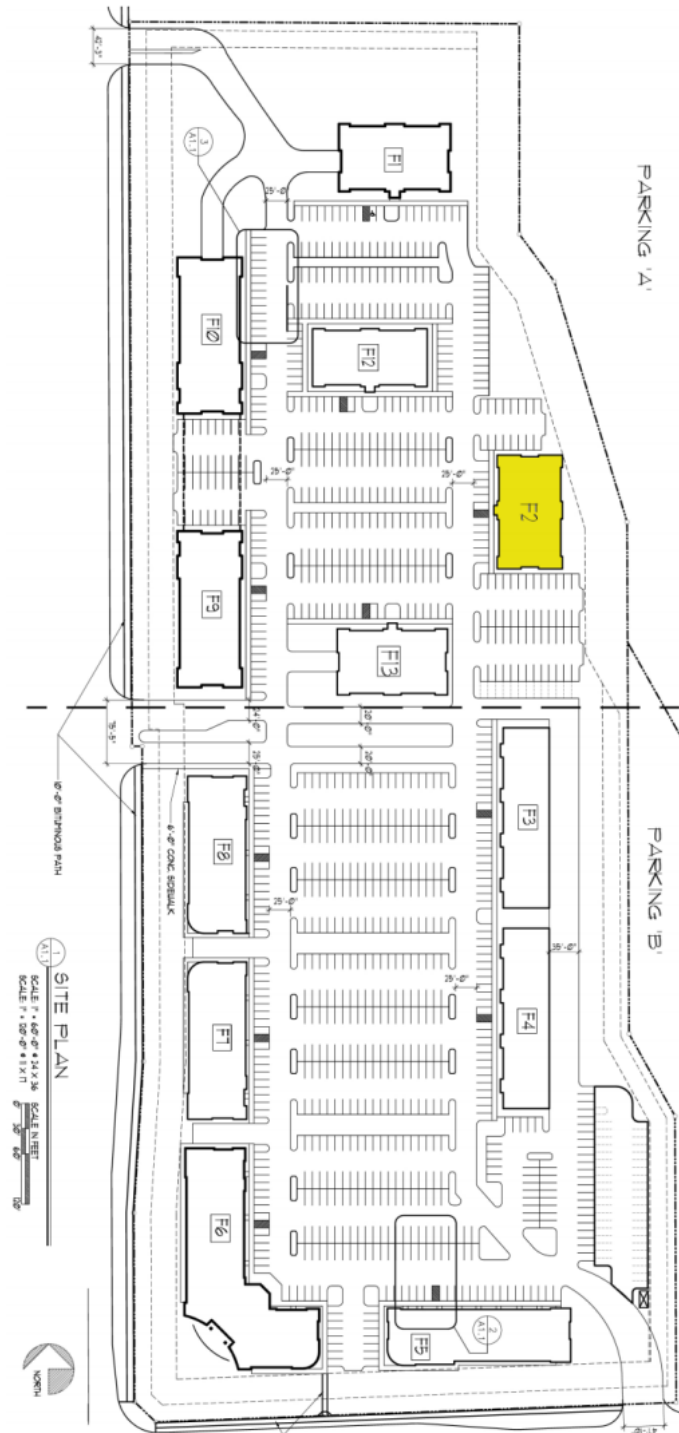
www.crossroadsproperties.net

FOR LEASE

Tamarack Hills F2

611 Bielenberg Drive, Woodbury, MN 55125

SITE PLAN



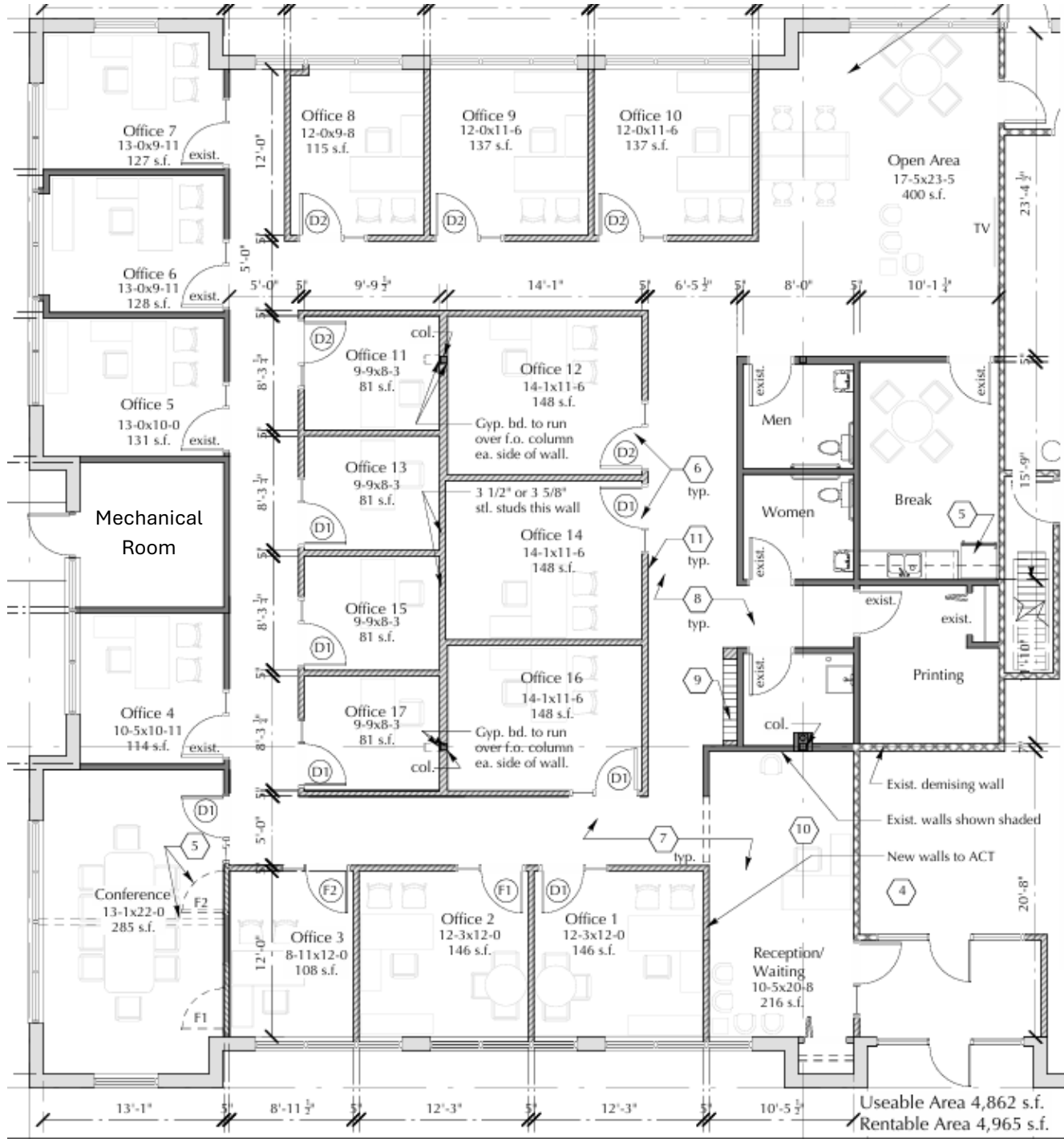
FOR LEASE

Tamarack Hills F2

611 Bielenberg Drive, Woodbury, MN 55125

FLOOR PLAN

Available:
1,500 – 4,965 SF



CROSSROADS
PROPERTIES

Mark Young

Zac Houle

7250 Hudson Boulevard N, Suite 160, Oakdale, MN 55128

www.crossroadsproperties.net

D: 651-233-2435 | M: 651-307-2371

D: 651-209-0520 | M: 651-248-7567