



**899 INDUSTRIAL DR
WEST CHICAGO, IL 60185**

AVAILABLE FOR LEASE

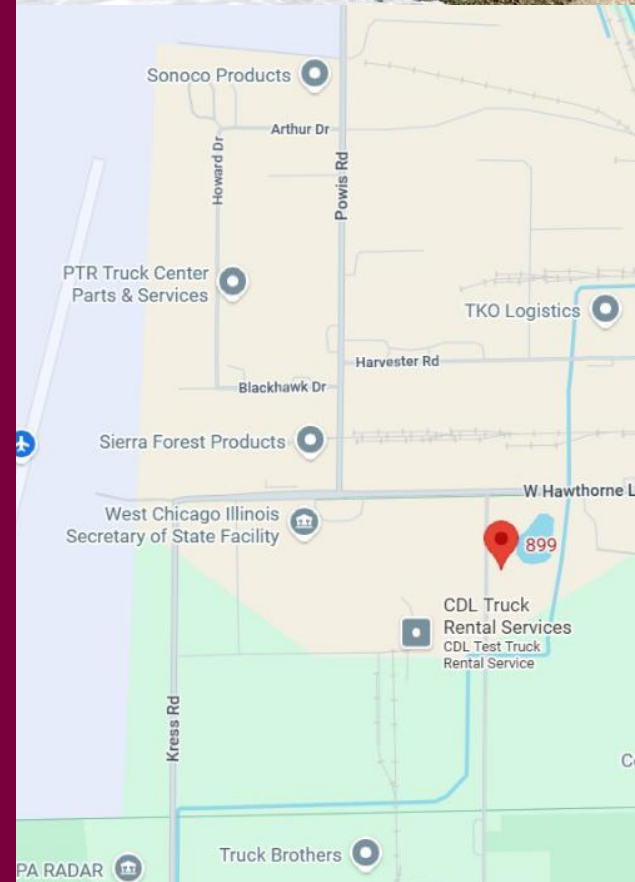
- Available NOW!
- 2,500 SF with office and washroom
- 12' X 12' drive in door
- 18' ceilings in warehouse 200 AMP 3 phase electric
- Great location between North Ave. & Roosevelt Rd., just west of Rt. 59
- Property professionally managed by Key Investment & Management Inc.

*Professionally managed by
Key Investment &
Management Inc.*



For additional information contact:

Kimberly Hess
O: 630.932.5757
1263 S Highland Ave. SUITE 2W
Lombard, IL 60148



2,500 SF
**INDUSTRIAL
SPACE**

\$13.00 PSF MG

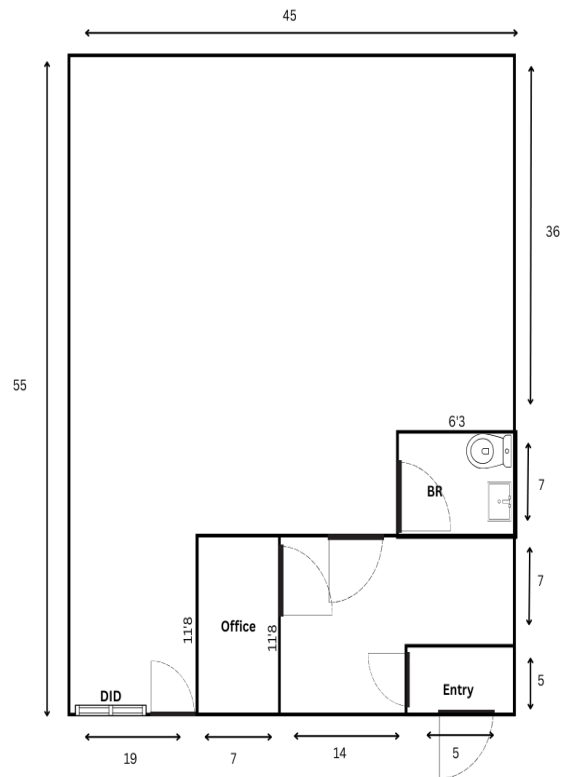


AVAILABLE FOR LEASE

899 INDUSTRIAL DR | WEST CHICAGO

Property Specifications

Building Size:	18,000 SF
Available Space:	2,500 SF
Year Built:	1973
Zoning:	M- Manufacturing
Parking:	Open Lot
Ceiling Height:	18' Warehouse
DID:	1- 12' x 12'
Dock:	None
Power:	200 AMP- 3 Phase
Washrooms:	1
Sprinklered:	No
Utilities	Gas, electric and water/sewer
Real Estate Tax Stop:	\$3.26
CAM:	Included
Possession:	Immediately
Lease Term:	Minimum 2 Years
LEASE RATE:	\$13.00 PSF



Dimensions are approximate and not drawn to scale.

4/9/26



For additional information contact:

Kimberly Hess

O: 630.932.5757

1263 S Highland Ave. SUITE 2W

Lombard, IL 60148