

12,800 SF Preschool Space Available For Lease



Katie Hummer
katie@kincommercial.com
(303) 870-3343

Tom Omdal
tom@kincommercial.com
(573) 881-4363

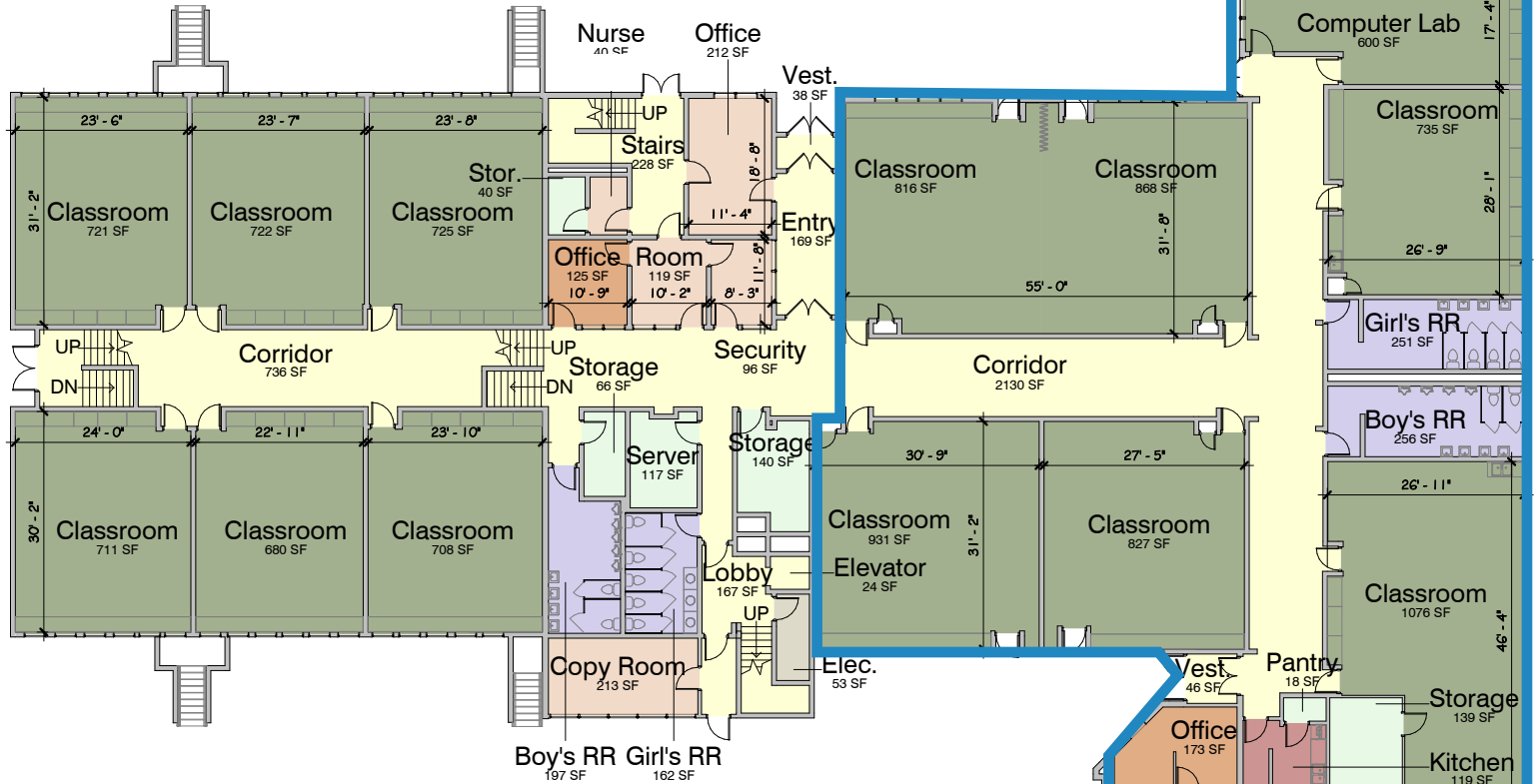
13680 E. 14th Place | Aurora, CO 80011 (Formerly St. Pius X Catholic School Building)

- Approximately 12,800 SF of pre-school and daycare space for lease
- Turnkey with "E" occupancy; currently 2 classrooms approved for early childhood education (ECE)
- Potential uses could be education, trade school, non-profit, early childhood education or others
- Existing church
- Easy access from I-225, Colfax Avenue, 6th Avenue and RTD transit
- Close proximity to Anschutz Medical Campus, Children's Hospital, and Veterans Affairs Hospital

13680 E. 14th Place
Aurora, CO 80011



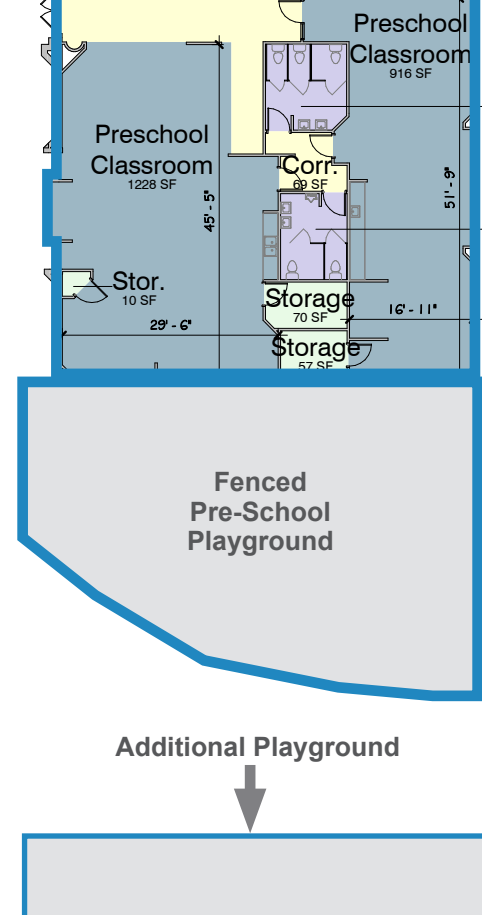
1st Level Floorplan - 12,800 SF Available



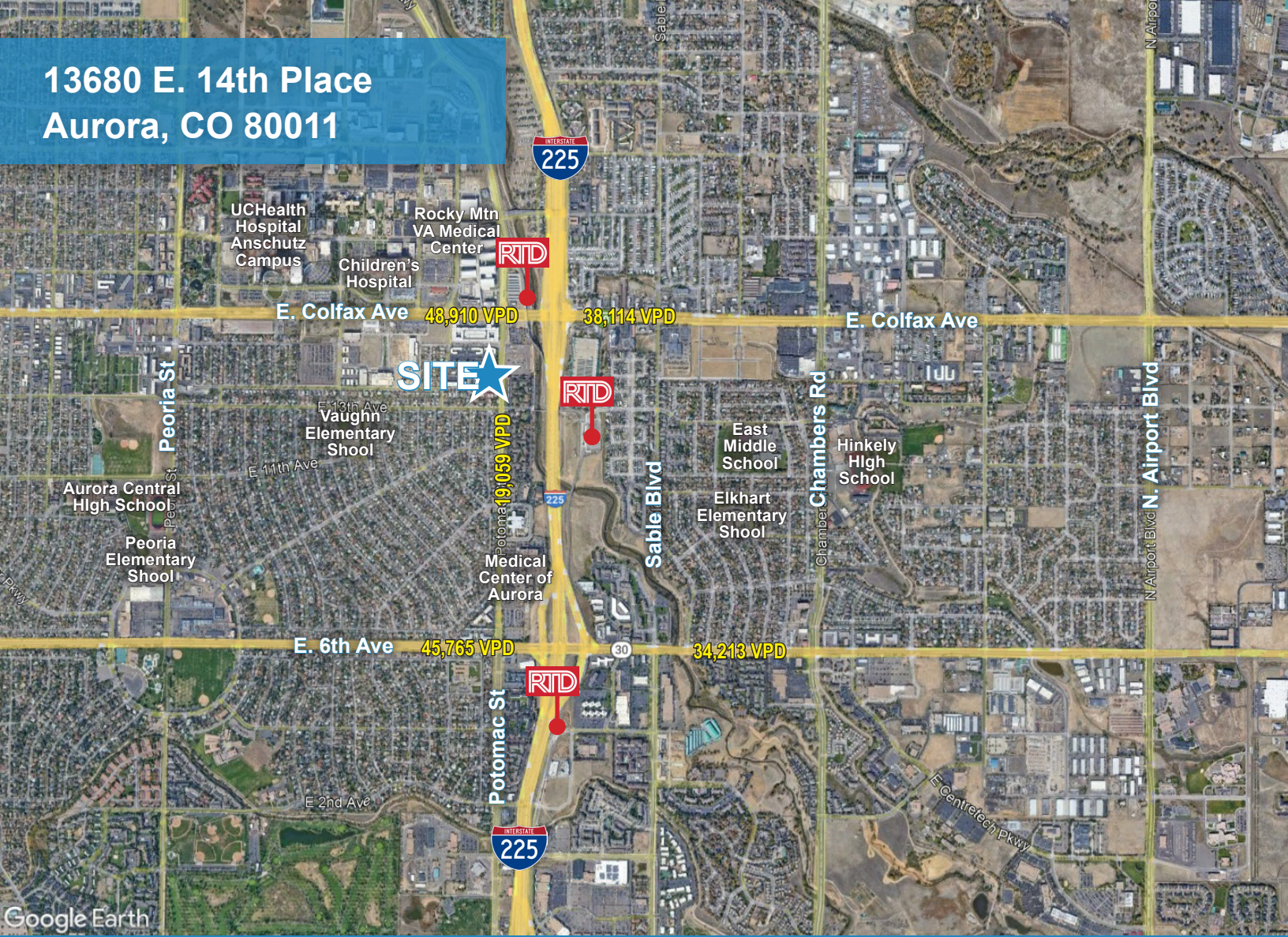
PROPERTY DETAILS

Available SF	Approx. 12,800 SF
Total Building SF	Approx. 35,710 SF
Total Lot Size	4.43 Acres
Year Built (School)	1980
Zoning	R-1
Parking	Surface Spaces

DEMOGRAPHICS	1 Mile	3 Mile	5 Mile
Population (2024)	21,523	152,547	382,580
Pop. Age 0-14 (2024)	31,427	74,382	183,171
Median Age	32.9	33.7	35.4
Total Households (2024)	7,487	53,169	142,110
Median HH Income	\$48,327	\$57,447	\$68,350



13680 E. 14th Place
Aurora, CO 80011



Katie Hummer

katie@kincommercial.com

(303) 870-3343

Tom Omdal

tom@kincommercial.com

(573) 881-4363

Information herein has been obtained from reputable industry sources. Kin Commercial and its representatives make no representation, warranty or guaranty that the information contained herein is factual or reliable. Kin Commercial recommends that each potential tenant or buyer conduct their own individual investigation of this site to determine its suitability.

