

501 E 15TH STREET

EDMOND, OK 73013



LOCATION DESCRIPTION

Located on the north side of 15th and Rankin one mile east of I-235.

PROPERTY HIGHLIGHTS

- Previously used for medical space
- Abundant parking directly in front and south side of the building
- Recently remodeled
- 3 entryways
- Tenant contracts with utility providers and pays directly
- Convenient parking immediately in front of the entry
- Handicap accessible ramps
- Could accommodate one or two office users

OFFERING SUMMARY

Suite 300 (entire building): ±4,200 RSF

Lease Rate: \$14.00 SF/yr
(\$4,900 / month)

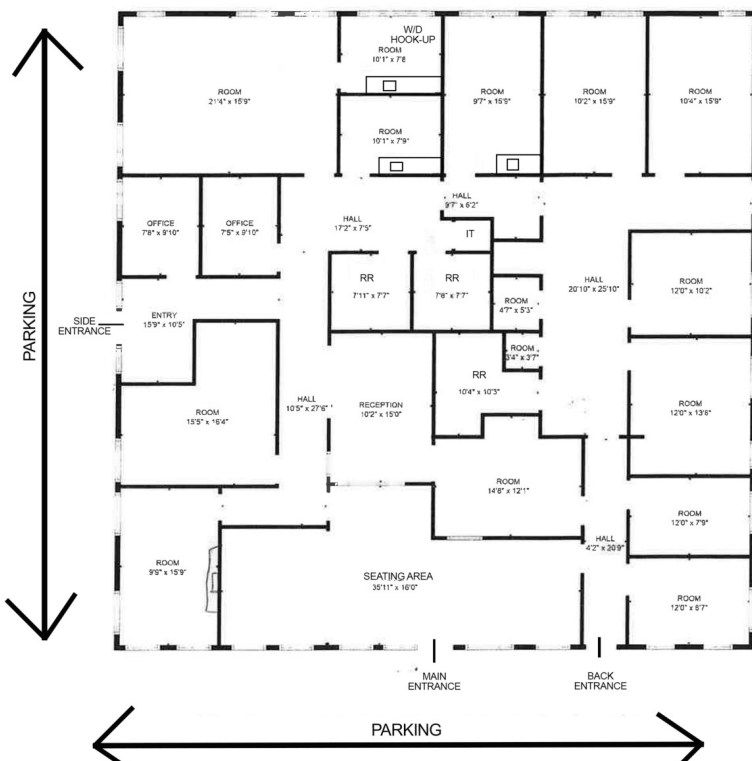
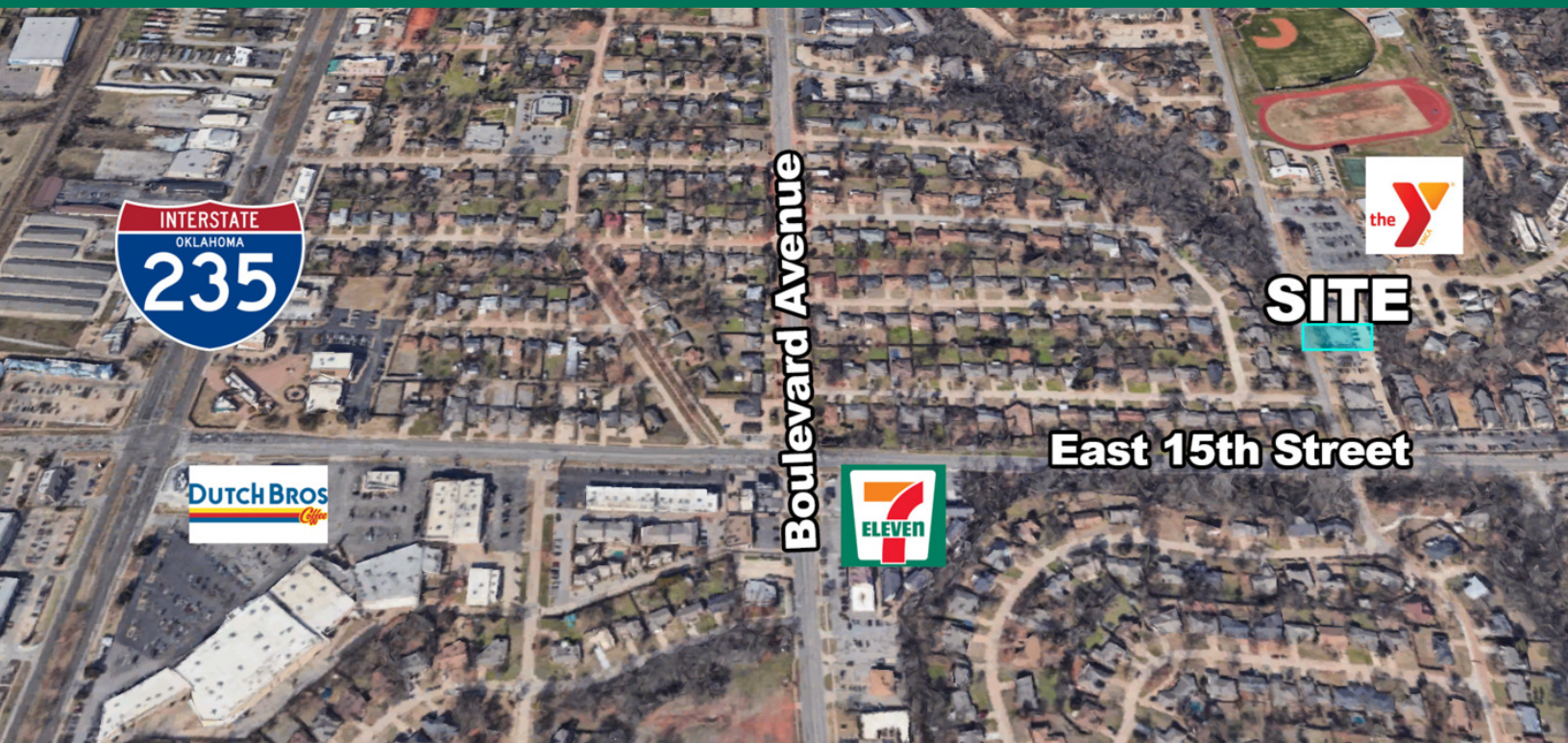
TOM FIELDS

tfields@priceedwards.com

O: 405.239.1205

501 E 15TH STREET

EDMOND, OK 73013



TOM FIELDS

tfields@priceedwards.com

O: 405.239.1205