



# 4477 Getwell Road

Memphis, Tennessee 38118

## Property Features

- 100% air conditioned warehouse/distribution facility
- 54,000 SF
- 7,454 SF office space
- Attractive concrete tilt wall panel
- 24' clear height
- 150' asphalt truck court with 45' concrete truck apron
- Class IV sprinkler system
- (9) 8'x10' dock high overhead doors
- 40'x41'8" column spacing



For more information:

**Hank Martin, SIOR**

901 526 3100 • [hmartin@saigcompany.com](mailto:hmartin@saigcompany.com)

NO WARRANTY OR REPRESENTATION, EXPRESS OR IMPLIED, IS MADE AS TO THE ACCURACY OF THE INFORMATION CONTAINED HEREIN, AND THE SAME IS SUBMITTED SUBJECT TO ERRORS, OMISSIONS, CHANGE OF PRICE, RENTAL OR OTHER CONDITIONS, PRIOR SALE, LEASE OR FINANCING, OR WITHDRAWAL WITHOUT NOTICE, AND OF ANY SPECIAL LISTING CONDITIONS IMPOSED BY OUR PRINCIPALS NO WARRANTIES OR REPRESENTATIONS ARE MADE AS TO THE CONDITION OF THE PROPERTY OR ANY HAZARDS CONTAINED THEREIN ARE ANY TO BE IMPLIED.

NAI Saig Company

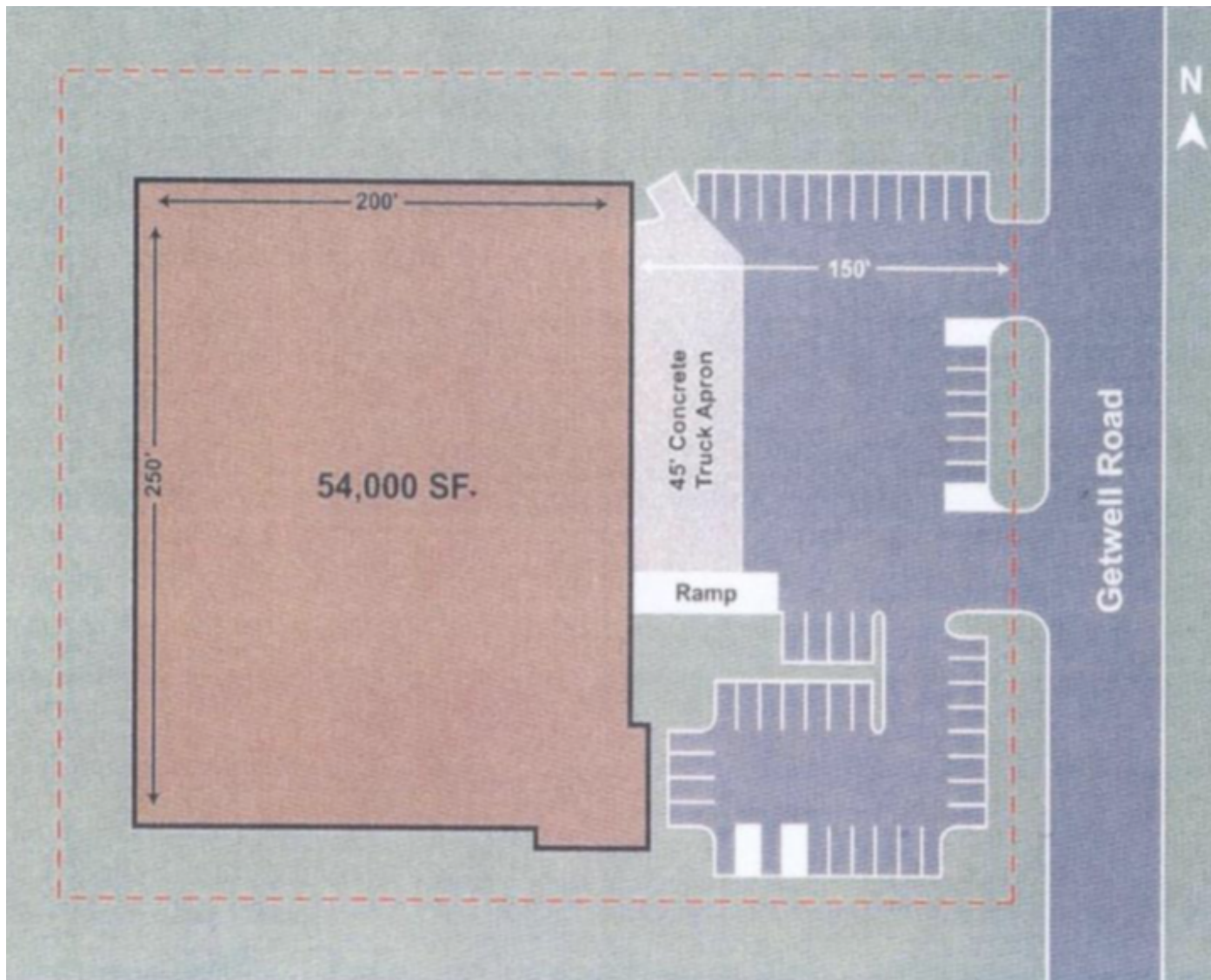
6263 Poplar Avenue Suite 150, Memphis, TN 38119

901 526 3100

[saigcompany.com](http://saigcompany.com)

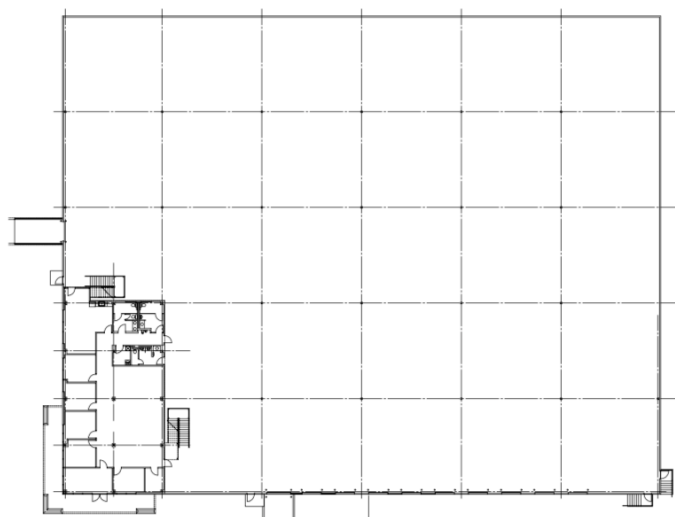
For Lease

# Industrial

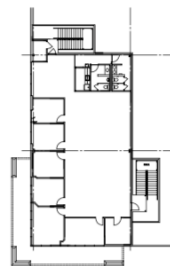


For Lease

# Industrial



 BUILDING FLOOR PLAN  
SCALE: 1/8" = 1'-0"



 MEZZANINE FLOOR PLAN  
SCALE: 1/8" = 1'-0"

DISTRIPLEX #15 OFFICE/WAREHOUSE BUILDING IN DISTRIPLEX CENTER AT AIRPORT INDUSTRIAL PARK 4477 GETWELL ROAD MEMPHIS, TENNESSEE