

2nd Generation Restaurant/Bar

retail space for lease



Property Highlights

4405-4425 West Dublin Granville

- Fully built out kitchen/bar/dining room
- Walking distance to Bridge Park
- Family of shops and salons, dining, and health and wellness tenants
- 102,000 SF of retail space

4,799
SF

\$28.50/SF
Lease Rate

Bryanna Thomas

Commercial Agent

c: 380.222.2302

e: bthomas@crawfordhoying.com

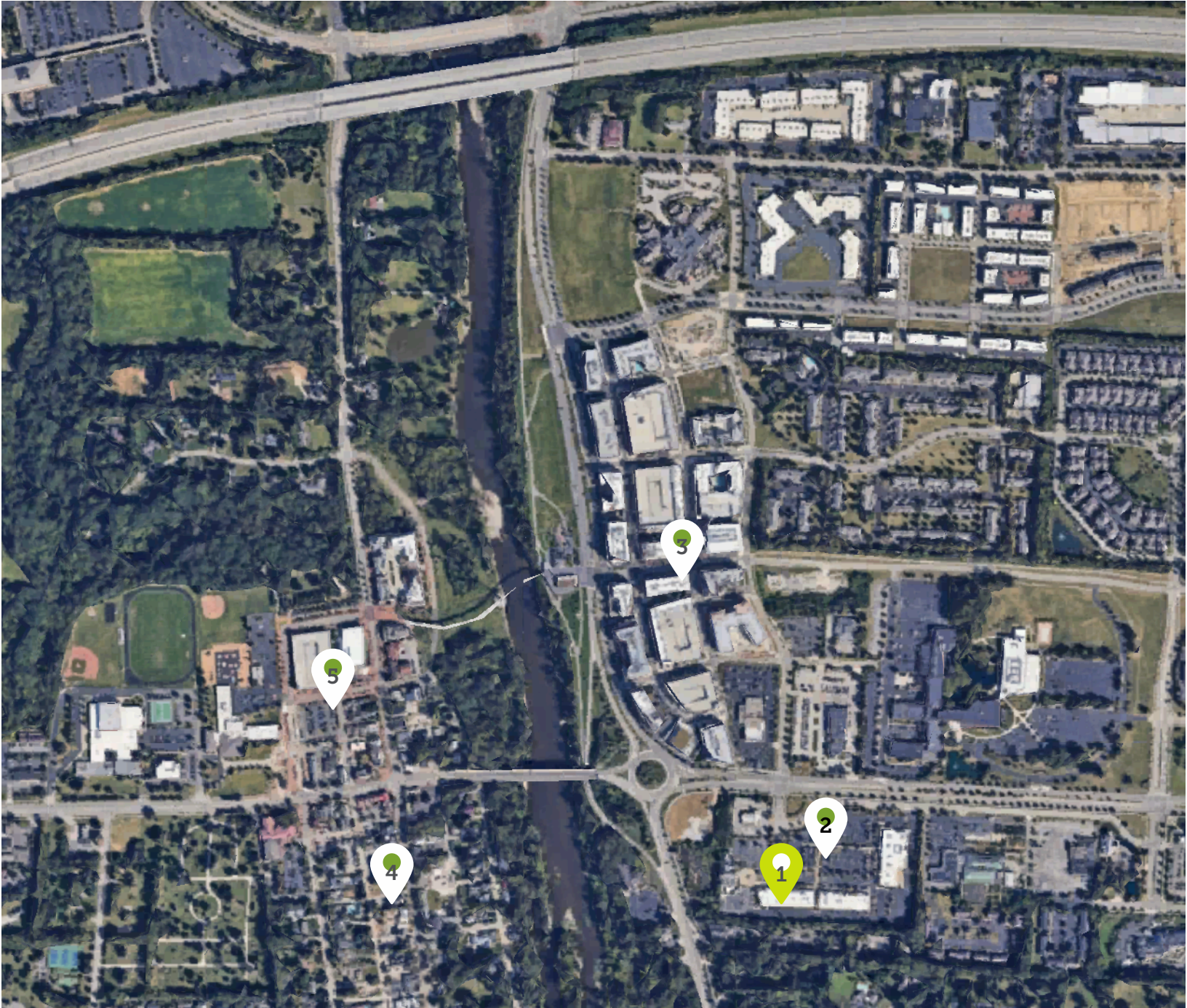
Reese Moore

Commercial Agent

c: 614.557.5116

e: rmoore@crawfordhoying.com





Points of Interest

- 1. 4365 W Dublin Granville
- 2. Shoppes at River Ridge
- 3. Bridge Park
- 4. Historic Dublin
- 5. Dublin West

Bryanna Thomas

Commercial Agent

c: 380.222.2302

e: bthomas@crawfordhoying.com

Reese Moore

Commercial Agent

c: 614.557.5116

e: rmoore@crawfordhoying.com

