

OFFICE SPACE AVAILABLE

New Center One

Detroit, Michigan



PRIME OFFICE SPACE AVAILABLE!

Property Highlights

- **Office Building Located at the Heart of New Center and the Northern End of Midtown Detroit**
- **Within Close-Proximity to Wayne State University and Henry Ford Hospital Campus**
- **Space Available: 32,000-50,000 SF of Office Space**
- **Within Steps of the QLINE with Station Stop for Fast Access to CBD**
- Lease Term: 5-10 Years
- Connected by Walkway to 2 Million SF of Office Space Servicing 2,000 Employees Daily
- Exclusive Access to Loading Dock
- 12 ft. Ceilings to Grid/18 ft. to Deck
- Abundant Parking, Adjacent Parking Lot Servicing Main Retail Entrance with Plenty of Additional Building Parking in Covered Parking Deck
- Second Entrance from Interior Atrium with Access to Retail Stores, Banks, Daycare and Food Court
- All Bus Route Access
- Within Walking Distance of Historical Fisher Building, Cadillac Place, Hotel St. Regis, Albert Kahn Building, Center for Creative Studies and the Wayne State University Interactive Bioscience Center
- Private Building Entrance with Signage for 32,000 SF



For more information, contact:

Christina DiBartolomeo

248-351-4394 | dibartolomeo@farbman.com

NAI Farbman

Commercial Real Estate Services, Worldwide.

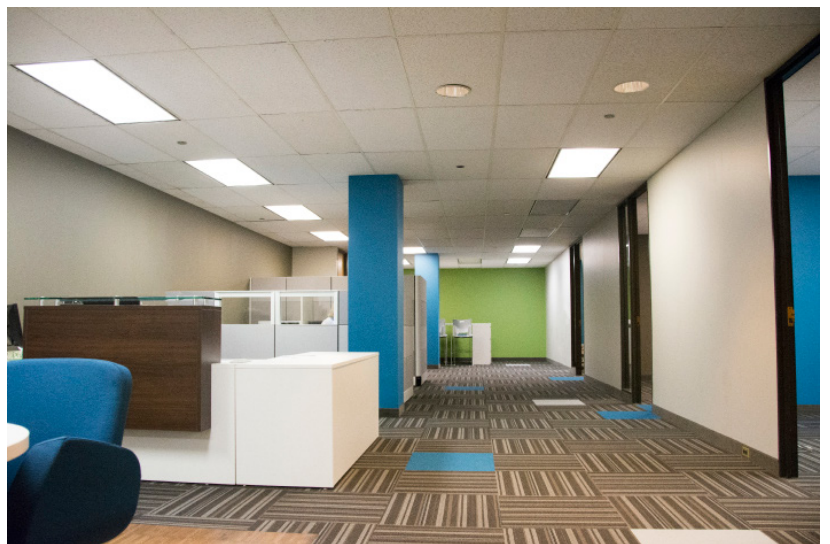
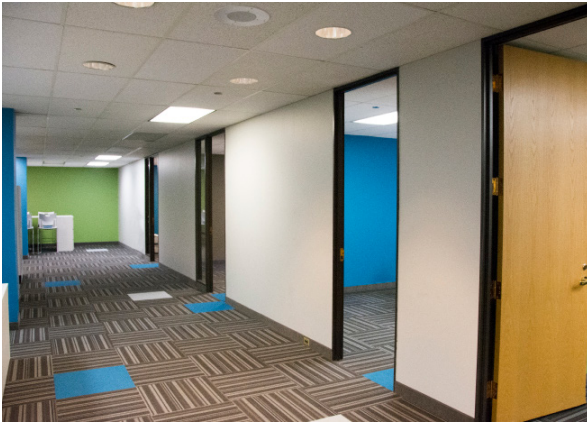


28400 Northwestern Hwy
Fourth Floor
Southfield, MI 48034
248 353 0500 tel
naifarbman.com

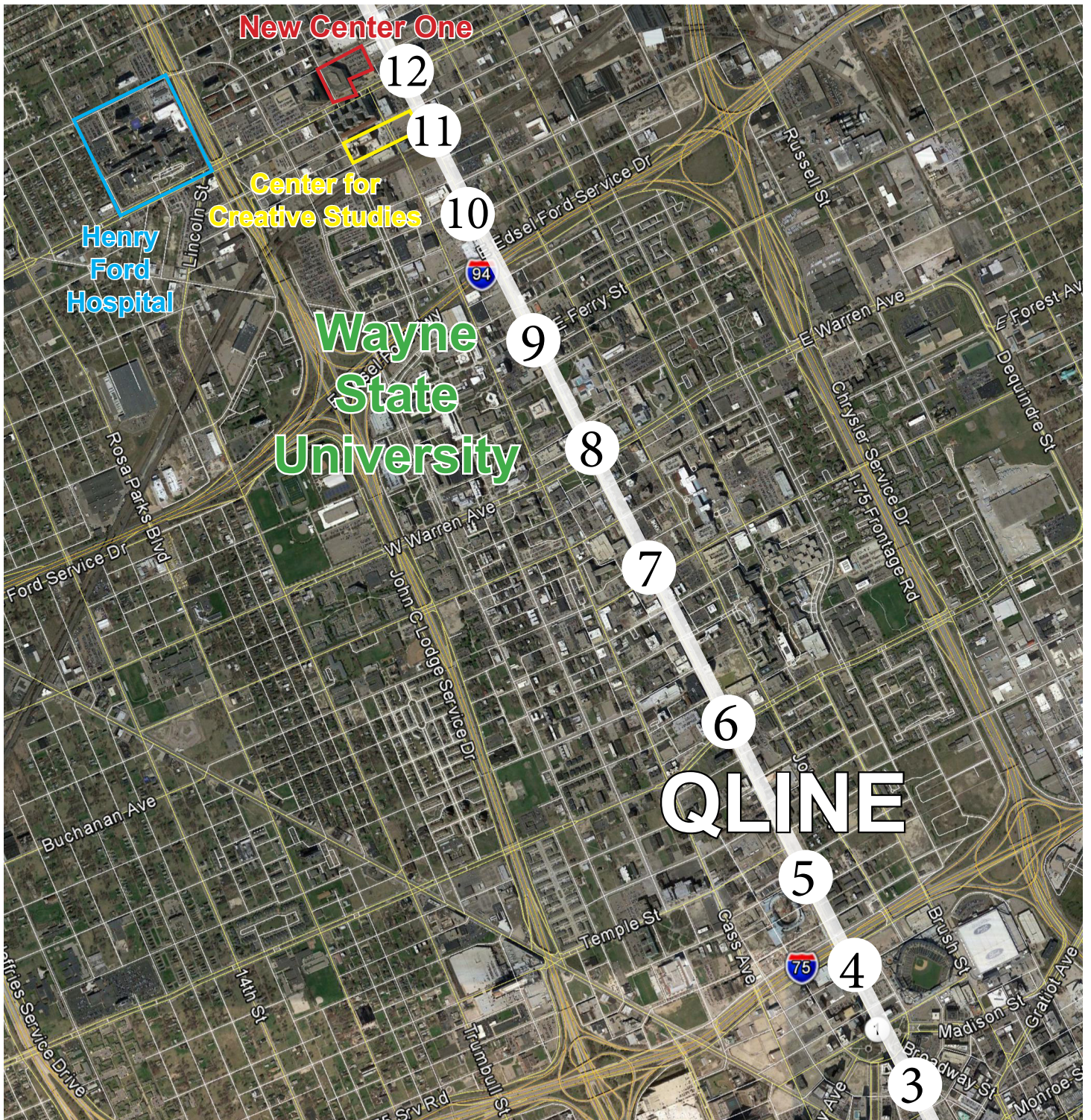
Photos



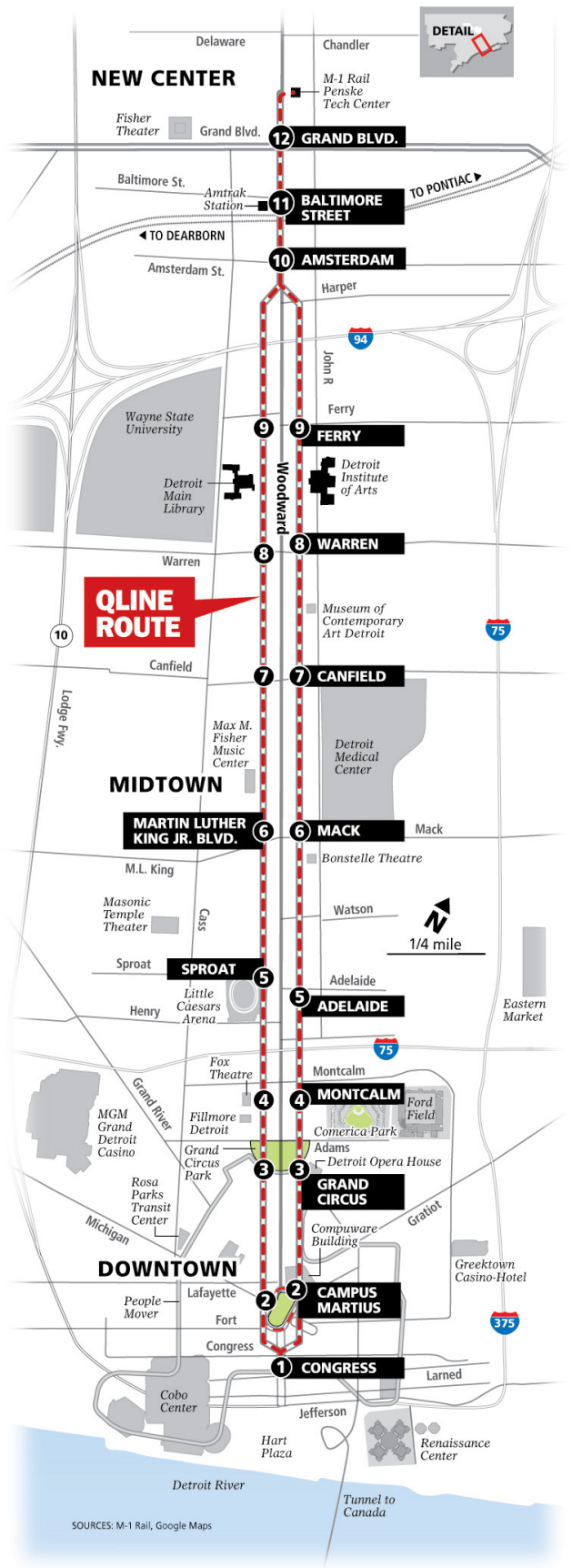
Photos







QLINE Map



Wayne State Map

