

2108

ADAM CLAYTON POWELL JR. BOULEVARD
HARLEM, NYC

NW Corner of Adam Clayton Powell Jr. Boulevard & West 126th Street



MERIDIAN
RETAIL LEASING

2108

ADAM CLAYTON POWELL JR. BOULEVARD
HARLEM, NYC

NW Corner of Adam Clayton Powell Jr.
Boulevard & West 126th Street

OFFICE FOR LEASE

APPROXIMATE SIZE
Fourth Floor: 13,500 SF

ASKING RENT
Upon Request

POSSESSION
Immediate

TERM
Negotiable

COMMENTS

- Expansive full-floor opportunity with flexible planning options
- Ideal for headquarters, training facility or school
- Modernized building systems and upgraded infrastructure
- Landlord flexible on work letter / TI / free rent for qualified tenants
- Positioned along a prime Harlem corridor with strong neighborhood presence

NEIGHBORS

Chick Fil A • America's Kids • Planet Fitness • MAC • KFC • GAP • Foot Locker • Banana Republic • Old Navy • Chipotle • PC Richard & Son • AMC Theatres

TRANSPORTATION



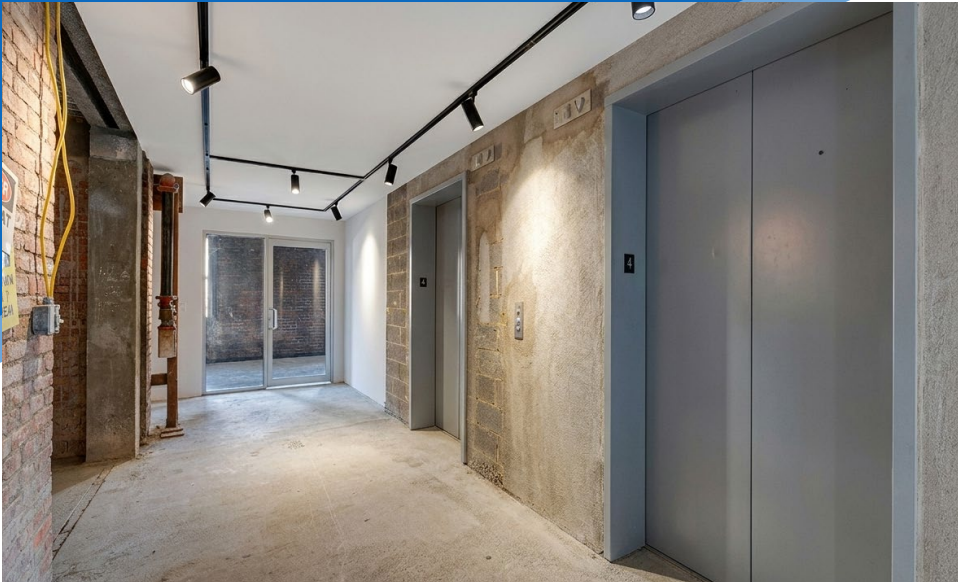
NOAM AZIZ
Senior Director
212.468.5984
naziz@meridiancapital.com

WILL SINE
Associate
212.468.5945
wsine@meridiancapital.com

JASON BERISHA
Associate
212.468.5955
jberisha@meridiancapital.com



MERIDIAN
RETAIL LEASING



INTERIOR

NOAM AZIZ
Senior Director
212.468.5984
naziz@meridiancapital.com

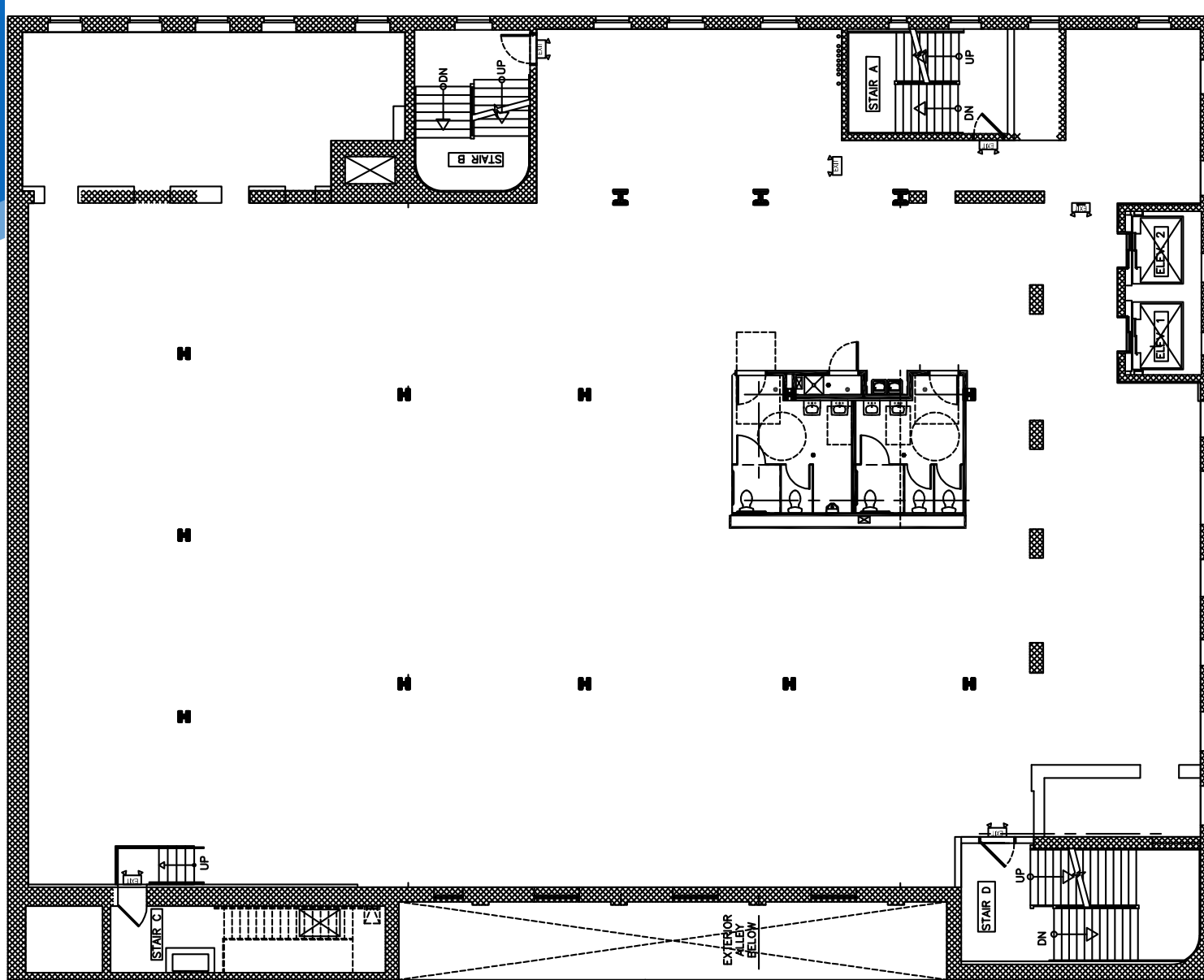
WILL SINE
Associate
212.468.5945
wsine@meridiancapital.com

JASON BERISHA
Associate
212.468.5955
jberisha@meridiancapital.com



MERIDIAN
RETAIL LEASING

FLOOR PLAN



ADAM CLAYTON POWELL JR. BOULEVARD

NOAM AZIZ
Senior Director
212.468.5984
naziz@meridiancapital.com

WILL SINE
Associate
212.468.5945
wsine@meridiancapital.com

JASON BERISHA
Associate
212.468.5955
jberisha@meridiancapital.com



MERIDIAN
RETAIL LEASING

NEIGHBORS

ST NICHOLAS AVENUE

MANHATTAN AVENUE

FREDERICK DOUGLASS BLVD

ADAM CLAYTON POWELL JR BLVD

The map displays a grid of streets: W 127th Street, W 126th Street, W 125th Street, W 124th Street, and W 123rd Street. Business logos are placed along these streets. A blue callout bubble points to the location of 2108 Adam Clayton Powell Jr. Boulevard, which is situated at the corner of W 126th Street and Adam Clayton Powell Jr. Blvd. The map also shows the locations of St Nicholas Avenue, Manhattan Avenue, and Frederick Douglass Blvd.

NOAM AZIZ
 Senior Director
 212.468.5984
 naziz@meridiancapital.com

WILL SINE
 Associate
 212.468.5945
 wsine@meridiancapital.com

JASON BERISHA
 Associate
 212.468.5955
 jberisha@meridiancapital.com

