

# FOR SALE OR LEASE | 22.86 Acres Nursery in Bonsall



## OFFERING SUMMARY

Sale Price:	Ask Broker
Available SF:	22.8 Acres
Lot Size:	22.8 Acres
Number of parcels:	3
Price / Acre:	-
Year Built:	
Zoning:	A70
Market:	Bonsall

## PROPERTY OVERVIEW

Introducing a rare opportunity to acquire three parcels encompassing nearly 23 acres of land in Bonsall, CA, North San Diego County. This offering includes three single-family homes, an inviting inground pool, eight expansive greenhouses, and a well. The property is fully fenced and enveloped by lush fruit trees, offering a serene and pastoral setting. Currently operating as a profitable nursery property, this expansive land presents an exceptional investment prospect, with ample space for further development. Whether for residential or agricultural development, this unique property encapsulates the promise of a rewarding and versatile investment opportunity. This property is available for sale or for lease.

**Maria Ingle**

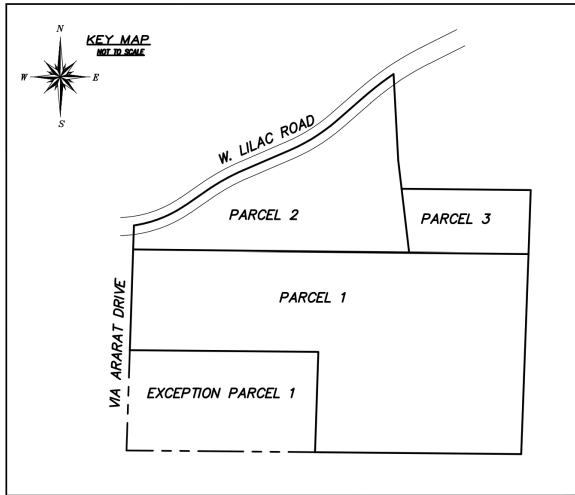
619.586.7937

[maria.ingle@expcommercial.com](mailto:maria.ingle@expcommercial.com)

**exp**<sup>®</sup>  
COMMERCIAL

eXp Commercial, LLC, its direct and indirect parents and their subsidiaries (together, "We") obtained the information above from sources believed to be reliable, however, We have not verified its accuracy and make no guarantee, warranty or representation, expressed or implied, about such information. The information contained above is submitted subject to the possibility of errors, omissions, price changes, rental or other conditions, prior sale, lease or financing, or withdrawal without notice. Any projections, opinions, assumptions or estimates of the information contained above or provided in connection therewith, either expressed or implied, are for example only, and they may not represent current or future performance of the subject property. You, together with your tax and legal advisors, should conduct your own thorough investigation of the subject property and potential investment.

# FOR SALE OR LEASE | 22.86 Acres Nursery in Bonsall



## PROPERTY HIGHLIGHTS

- -Three Parcels with three different APNs numbers:
  - 127-271-35-00 / 127-271-36-00 / 127-271-37-00
- - 22.86 Acres Lot total.
- - 3 single Family Residences. as follows:
  - Residence 1 ( Main House): 3,651 SF 4 Bed, 2.5 Ba; in ground swimming pool.
  - Residence 2: 2,100 SF 2 Bed, 2.5 Ba
  - Residence 3: 2 Bed, 1 Ba
- - Zoned A70
- - Spacious layout
- - Well-maintained properties
- - Ample parking space for vehicles.
- - Equestrian arena.
- -Irrigated pasture.
- - Scenic views 360 degrees
- - Potential for expansion
- - Versatile investment opportunity
- -Only 0.3 miles from Sullivan Middle School and Bonsall High School.



**Maria Ingle**

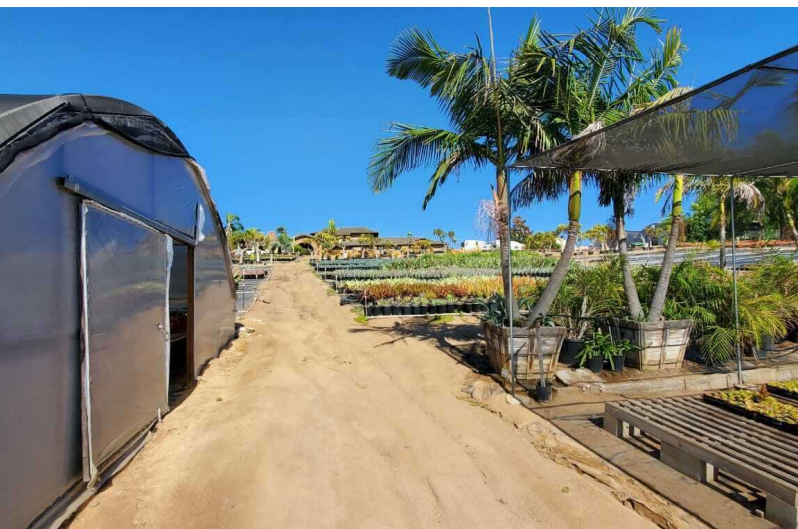
619.586.7937

[maria.ingle@expcommercial.com](mailto:maria.ingle@expcommercial.com)

**exp**<sup>®</sup>  
COMMERCIAL

eXp Commercial, LLC, its direct and indirect parents and their subsidiaries (together, "We") obtained the information above from sources believed to be reliable, however, We have not verified its accuracy and make no guarantee, warranty or representation, expressed or implied, about such information. The information contained above is submitted subject to the possibility of errors, omissions, price changes, rental or other conditions, prior sale, lease or financing, or withdrawal without notice. Any projections, opinions, assumptions or estimates of the information contained above or provided in connection therewith, either expressed or implied, are for example only, and they may not represent current or future performance of the subject property. You, together with your tax and legal advisors, should conduct your own thorough investigation of the subject property and potential investment.

# FOR SALE OR LEASE | 22.86 Acres Nursery in Bonsall



**Maria Ingle**

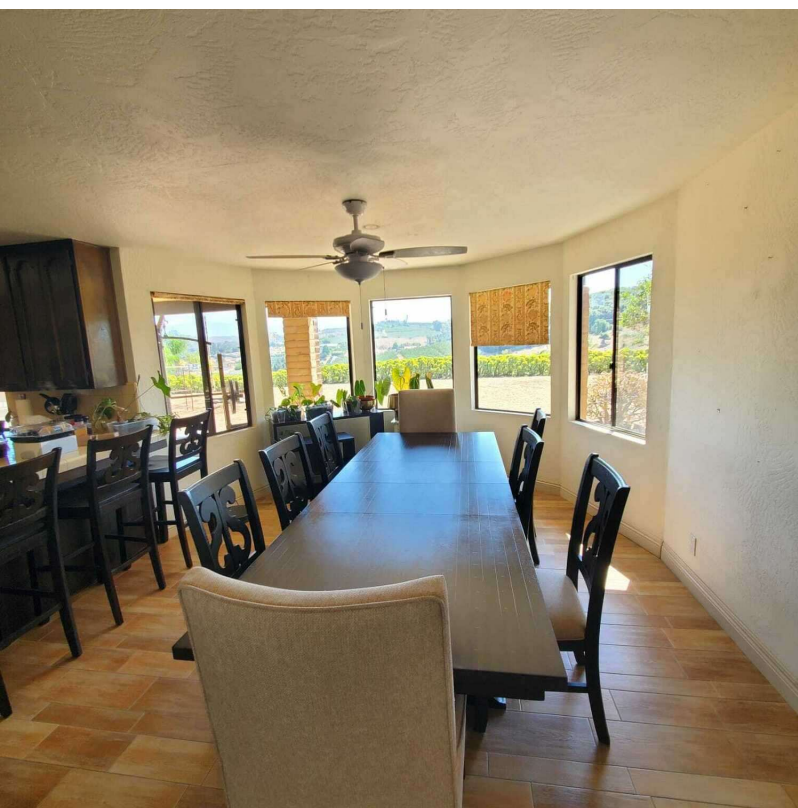
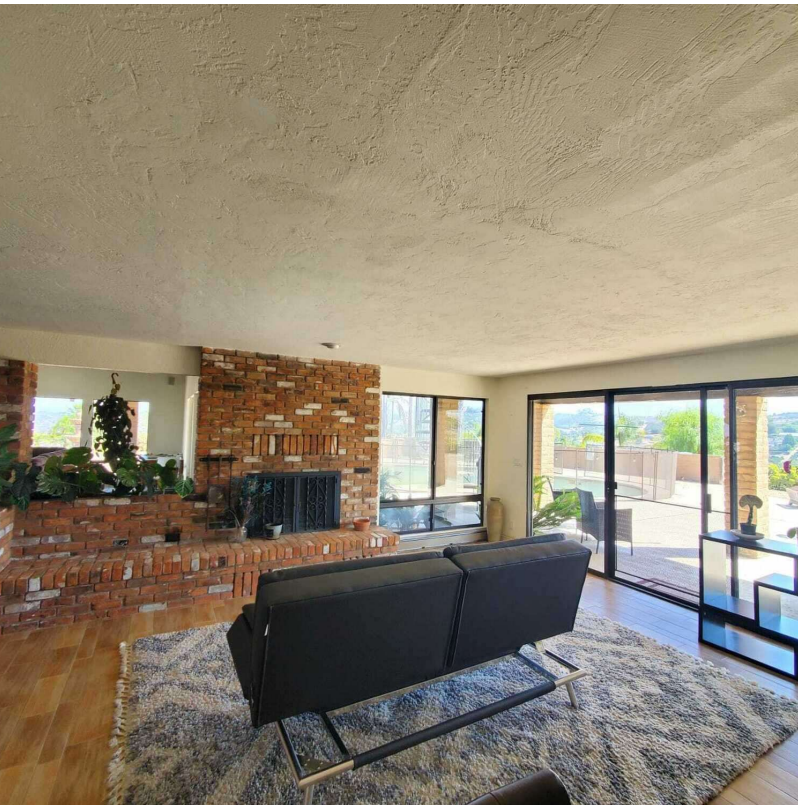
619.586.7937

[maria.ingle@expcommercial.com](mailto:maria.ingle@expcommercial.com)

**exp**<sup>®</sup>  
COMMERCIAL

eXp Commercial, LLC, its direct and indirect parents and their subsidiaries (together, "We") obtained the information above from sources believed to be reliable, however, We have not verified its accuracy and make no guarantee, warranty or representation, expressed or implied, about such information. The information contained above is submitted subject to the possibility of errors, omissions, price changes, rental or other conditions, prior sale, lease or financing, or withdrawal without notice. Any projections, opinions, assumptions or estimates of the information contained above or provided in connection therewith, either expressed or implied, are for example only, and they may not represent current or future performance of the subject property. You, together with your tax and legal advisors, should conduct your own thorough investigation of the subject property and potential investment.

# FOR SALE OR LEASE | 22.86 Acres Nursery in Bonsall



**Maria Ingle**

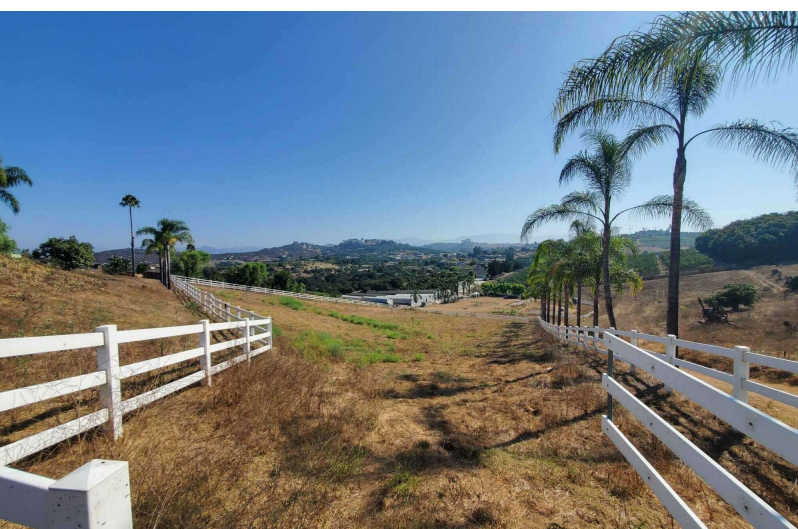
619.586.7937

[maria.ingle@expcommercial.com](mailto:maria.ingle@expcommercial.com)

**exp**<sup>®</sup>  
COMMERCIAL

eXp Commercial, LLC, its direct and indirect parents and their subsidiaries (together, "We") obtained the information above from sources believed to be reliable, however, We have not verified its accuracy and make no guarantee, warranty or representation, expressed or implied, about such information. The information contained above is submitted subject to the possibility of errors, omissions, price changes, rental or other conditions, prior sale, lease or financing, or withdrawal without notice. Any projections, opinions, assumptions or estimates of the information contained above or provided in connection therewith, either expressed or implied, are for example only, and they may not represent current or future performance of the subject property. You, together with your tax and legal advisors, should conduct your own thorough investigation of the subject property and potential investment.

# FOR SALE OR LEASE | 22.86 Acres Nursery in Bonsall



**Maria Ingle**

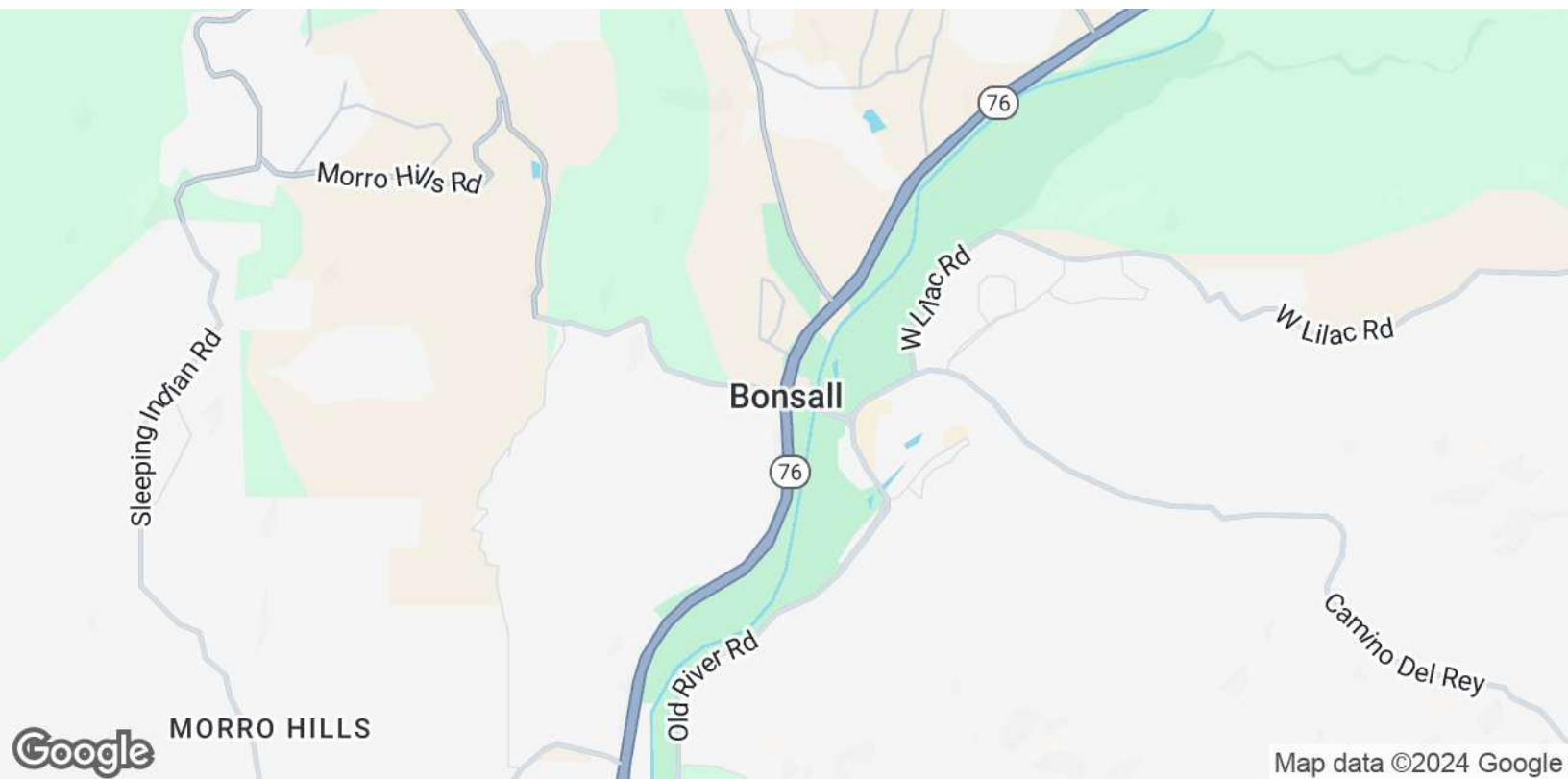
619.586.7937

[maria.ingle@expcommercial.com](mailto:maria.ingle@expcommercial.com)

**exp**<sup>®</sup>  
COMMERCIAL

eXp Commercial, LLC, its direct and indirect parents and their subsidiaries (together, "We") obtained the information above from sources believed to be reliable, however, We have not verified its accuracy and make no guarantee, warranty or representation, expressed or implied, about such information. The information contained above is submitted subject to the possibility of errors, omissions, price changes, rental or other conditions, prior sale, lease or financing, or withdrawal without notice. Any projections, opinions, assumptions or estimates of the information contained above or provided in connection therewith, either expressed or implied, are for example only, and they may not represent current or future performance of the subject property. You, together with your tax and legal advisors, should conduct your own thorough investigation of the subject property and potential investment.

# FOR SALE OR LEASE | 22.86 Acres Nursery in Bonsall



**Maria Ingle**

619.586.7937

[maria.ingle@expcommercial.com](mailto:maria.ingle@expcommercial.com)



eXp Commercial, LLC, its direct and indirect parents and their subsidiaries (together, "We") obtained the information above from sources believed to be reliable, however, We have not verified its accuracy and make no guarantee, warranty or representation, expressed or implied, about such information. The information contained above is submitted subject to the possibility of errors, omissions, price changes, rental or other conditions, prior sale, lease or financing, or withdrawal without notice. Any projections, opinions, assumptions or estimates of the information contained above or provided in connection therewith, either expressed or implied, are for example only, and they may not represent current or future performance of the subject property. You, together with your tax and legal advisors, should conduct your own thorough investigation of the subject property and potential investment.

# FOR SALE OR LEASE | 22.86 Acres Nursery in Bonsall



**MARIA INGLE**

**Commercial Real Estate Advisor**

maria.ingle@expcommercial.com

Direct: 619.586.7937

CalDRE #02103925

## PROFESSIONAL BACKGROUND

Real Estate advisor at eXp Commercial.

Maria Ingle was born and raised in Spain, and she moved to USA in 2005, where she started her career as a residential real estate agent. However, her passion for commercial real estate made her specialize as a commercial advisor.

Maria has obtained several certifications and designations, and is a member of NCREA, CREIPS, IBBA, CABB.

Maria is also building her organization with residential and commercial agents internationally, so if you are looking to join a great organization, Maria would love to have you as part of the team!

## EDUCATION

Business Administration, University of Seville, Spain.

## MEMBERSHIPS

CABB, IBBA, NCREA, CREIPS

### eXp Commercial

2603 Camino Ramon Suite 200

San Ramon, CA 94583

855.451.1236

**Maria Ingle**

619.586.7937

maria.ingle@expcommercial.com

**exp**<sup>®</sup>  
COMMERCIAL

eXp Commercial, LLC, its direct and indirect parents and their subsidiaries (together, "We") obtained the information above from sources believed to be reliable, however, We have not verified its accuracy and make no guarantee, warranty or representation, expressed or implied, about such information. The information contained above is submitted subject to the possibility of errors, omissions, price changes, rental or other conditions, prior sale, lease or financing, or withdrawal without notice. Any projections, opinions, assumptions or estimates of the information contained above or provided in connection therewith, either expressed or implied, are for example only, and they may not represent current or future performance of the subject property. You, together with your tax and legal advisors, should conduct your own thorough investigation of the subject property and potential investment.