

Available Medical Office Space for Lease

San Gabriel Valley Medical Plaza

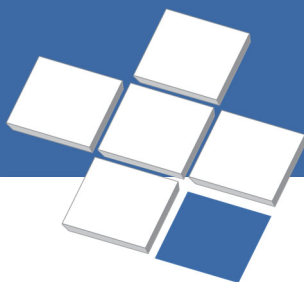
207 South Santa Anita Street, San Gabriel, CA 91776

For leasing information:

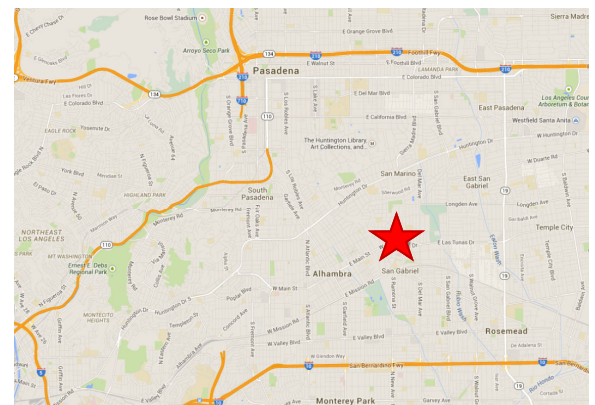
Leslie Price
Director, Leasing
Phone: 858-794-1900
Lprice@pmbres.com
www.pmbres.com
CA Lic. 02131283



- BUILD-TO-SUIT & MOVE-IN READY SPACE AVAILABLE
- PRIME GROUND FLOOR SPACE AVAILABLE
- 58,000 Square Feet Four-Story Medical Office Building
- Located at the San Gabriel Medical Center Hospital
- Surface parking adjacent to building
- Local professional property management
- Convenient access to the 10 & 210 freeways
- Lab & Pharmacy located in building

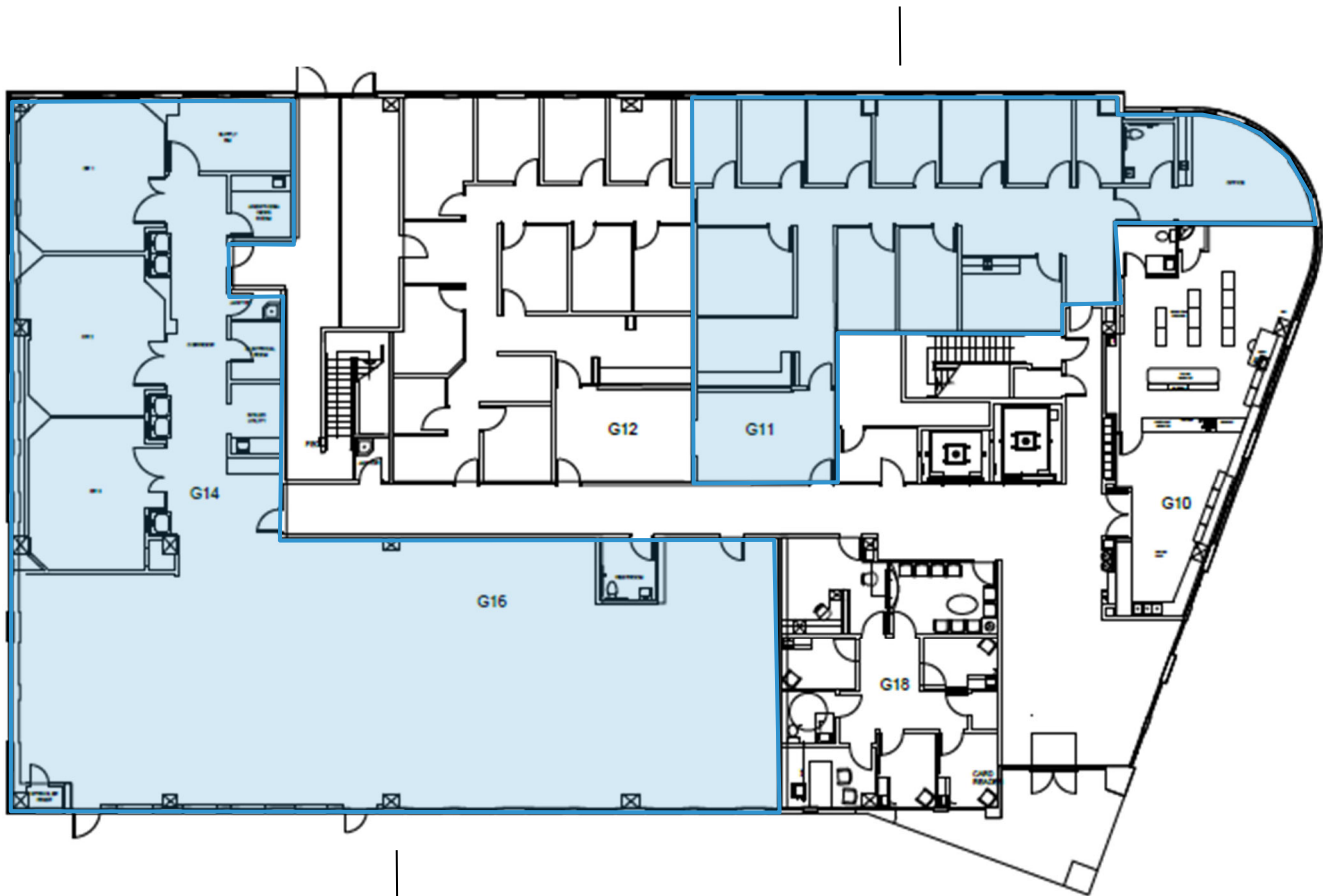


PMB
Real Estate Services
Real Estate Management Solutions for Healthcare



First Floor Availabilities

Suite G11
Approx. 2,315 RSF



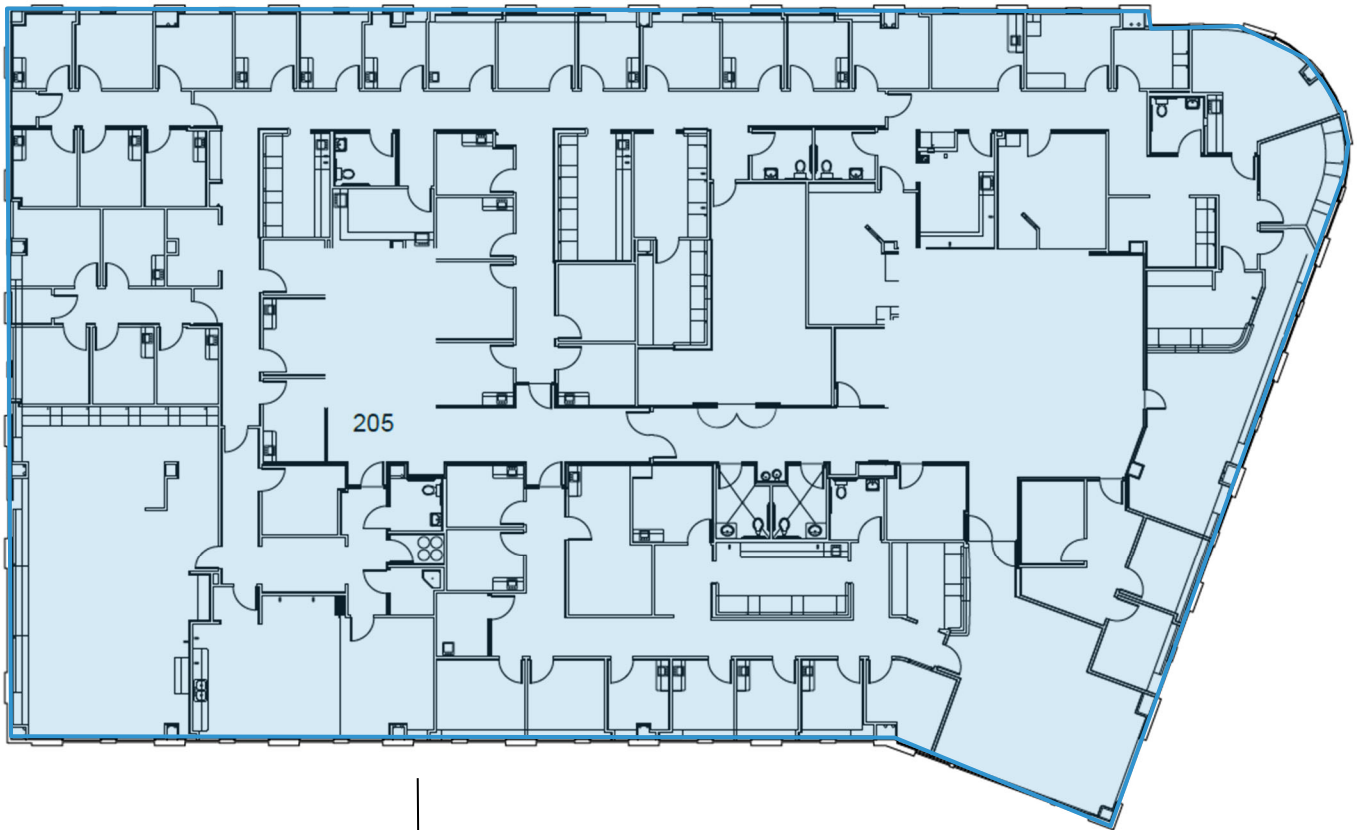
Suite G14 / G16
Approx. 6,600 RSF



PMB Real Estate Services
Real Estate Management Solutions for Healthcare

San Gabriel Valley Medical Plaza

Second Floor Availabilities



Suite 205
16,125 RSF



PMB Real Estate Services
Real Estate Management Solutions for Healthcare

San Gabriel Valley Medical Plaza

Third Floor Availabilities



Suite 368

1,606 RSF

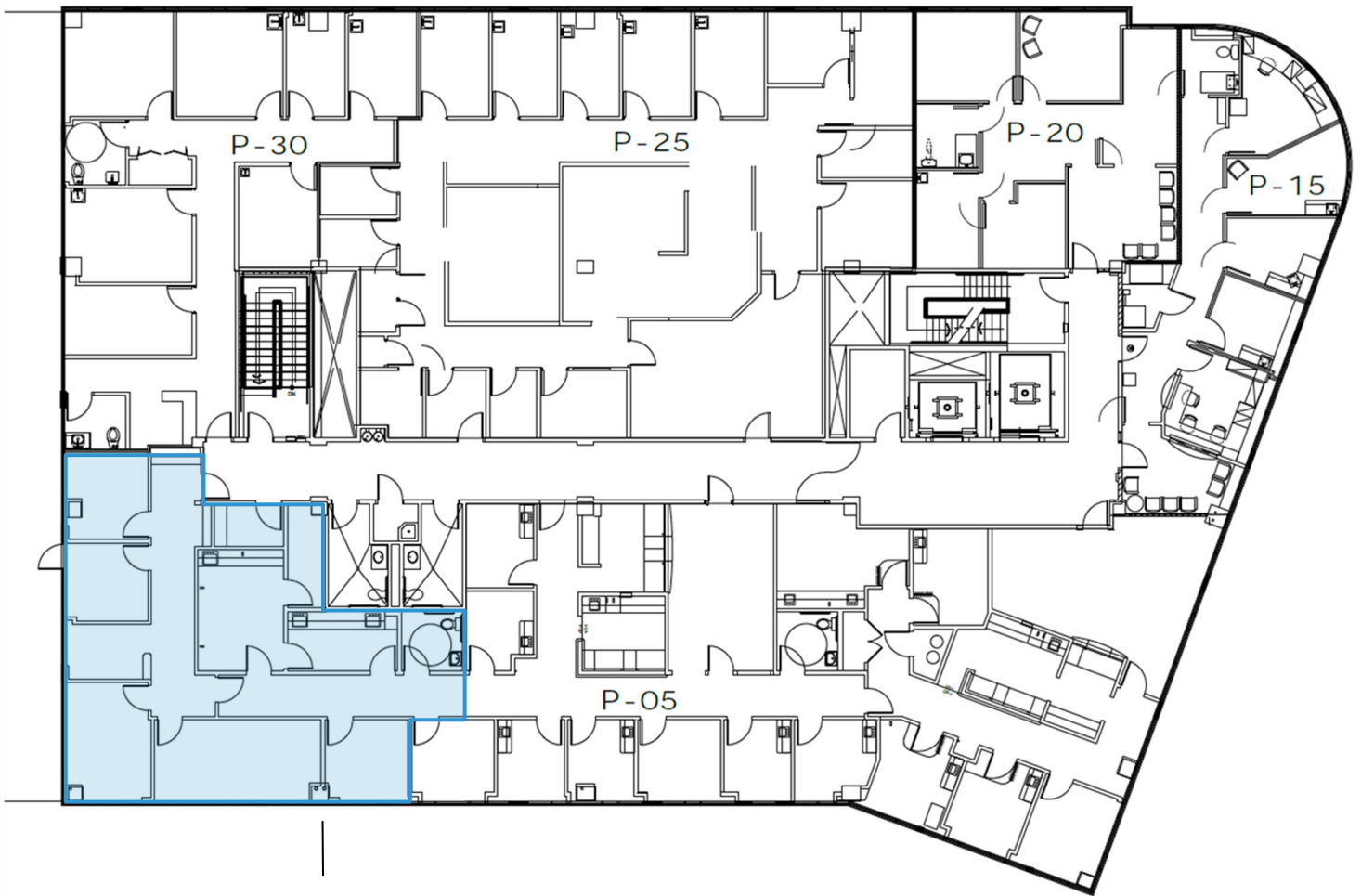
Available 04/01/2026



PMB Real Estate Services
Real Estate Management Solutions for Healthcare

San Gabriel Valley Medical Plaza

Fourth Floor Availabilities



Suite P-35
1,740 RSF



PMB Real Estate Services
Real Estate Management Solutions for Healthcare

San Gabriel Valley Medical Plaza