



# PLACENTIA CORPORATE CENTER

701 & 711 Kimberly Avenue  
Placentia | CA

**NEWMARK**

**FOR LEASE**

701 & 711 Kimberly Avenue, Placentia | CA



# PLACENTIA CORPORATE CENTER

CENTER





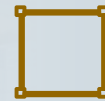
**TWO OFFICE**  
Building Campus



**IMMEDIATE ACCESS**  
to 57 and 91 freeways



**BUILDING AND FREEWAY**  
signage available



**SPEC SUITES AVAILABLE**



**FIBER OPTIC**  
internet service



**OUTDOOR SEATING AREA**



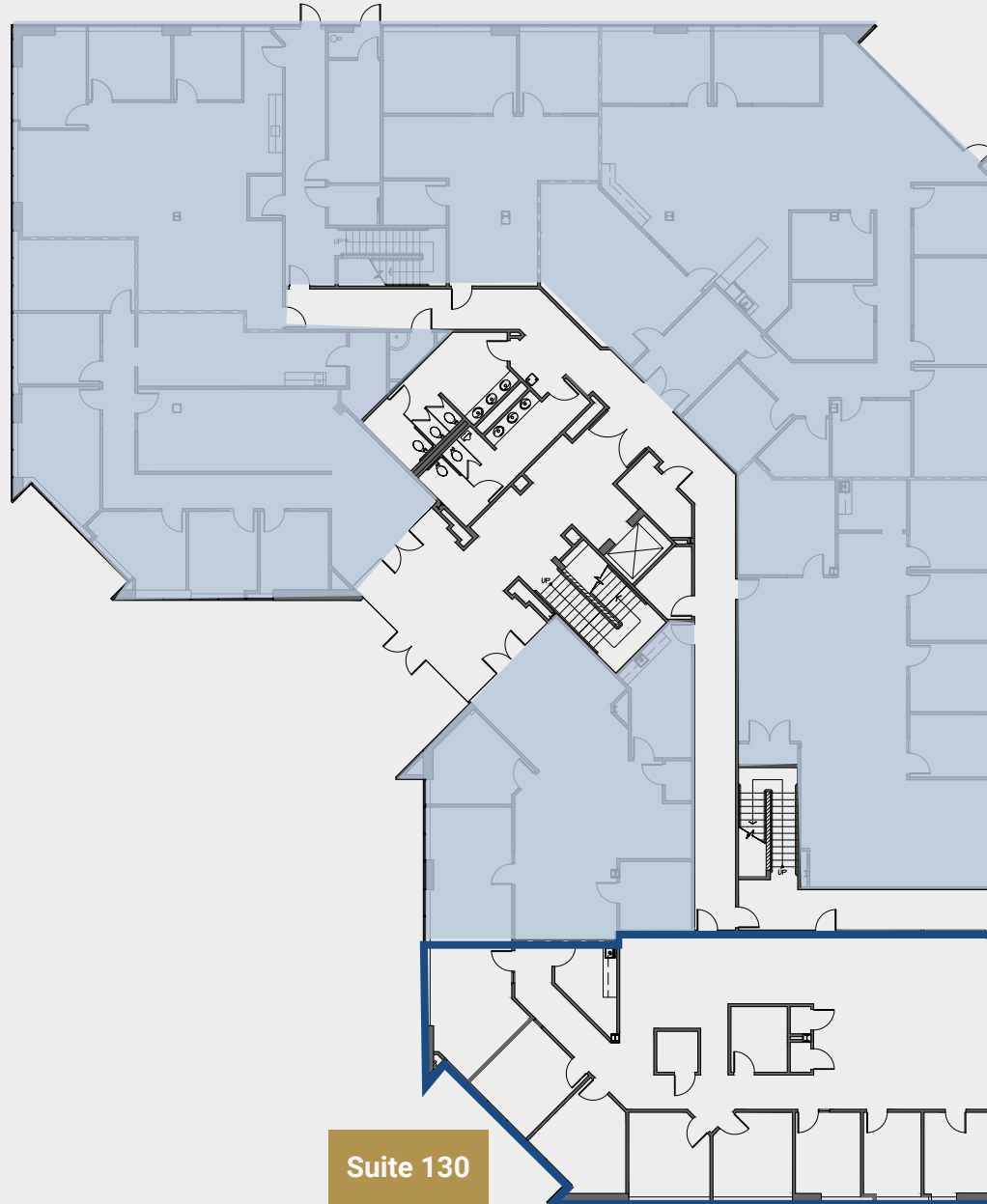
**CAFE ON SITE**



THIGH

# BUILDING 701

Suite 130 / ±3,540 SF

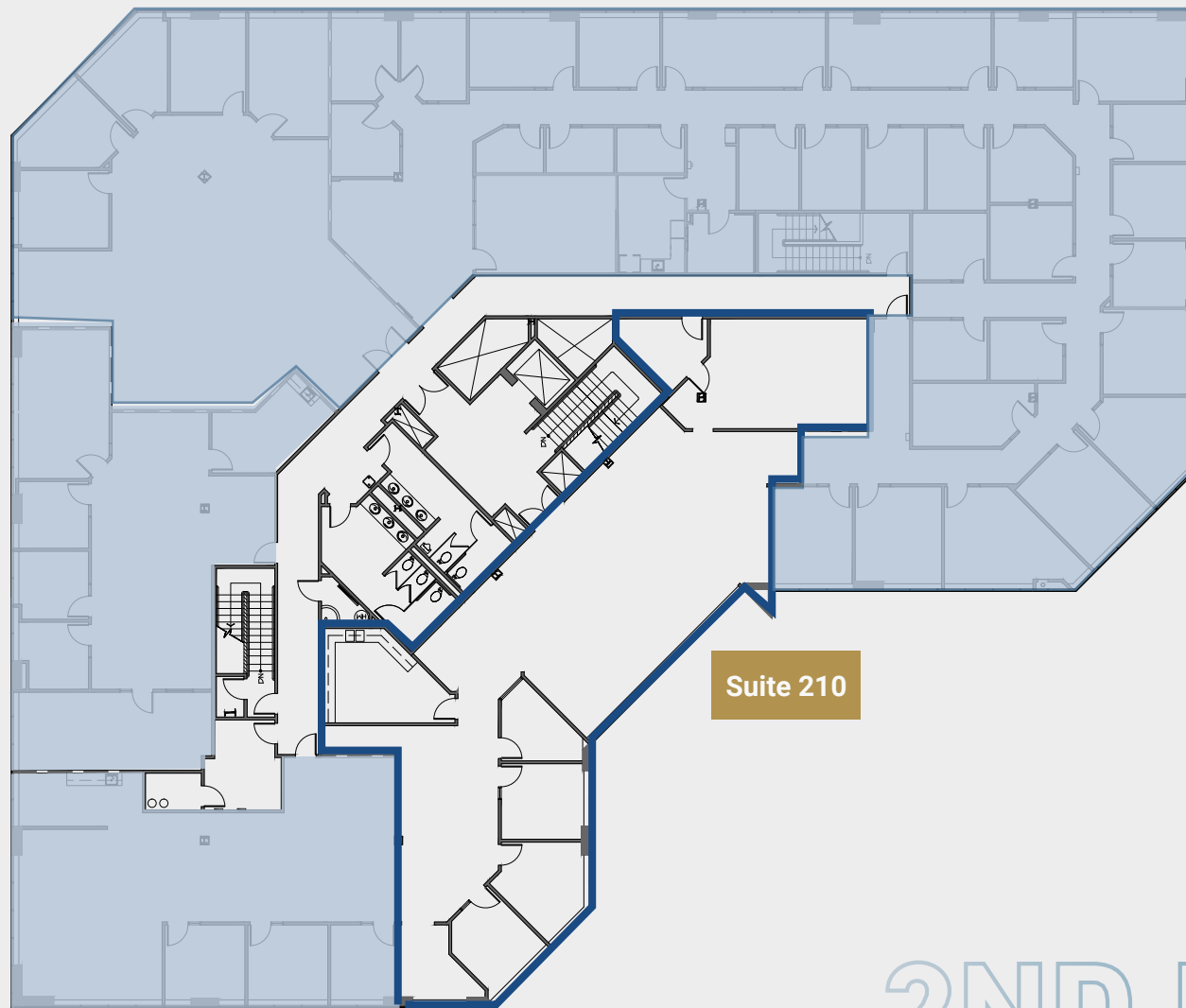


1ST FLOOR

Suite 130

# BUILDING 701

Suite 210 / ±3,852 SF



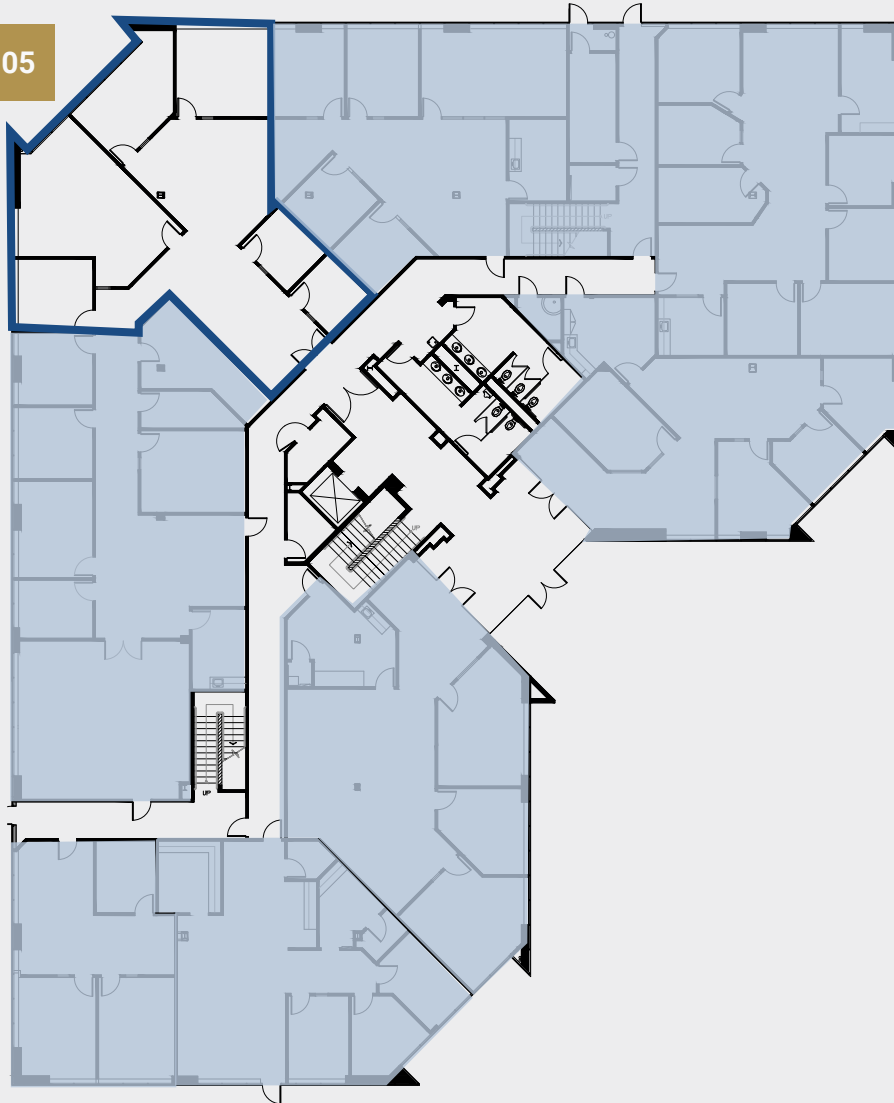
Suite 210

# 2ND FLOOR

# BUILDING 711

Suite 105 / ±2,522 SF

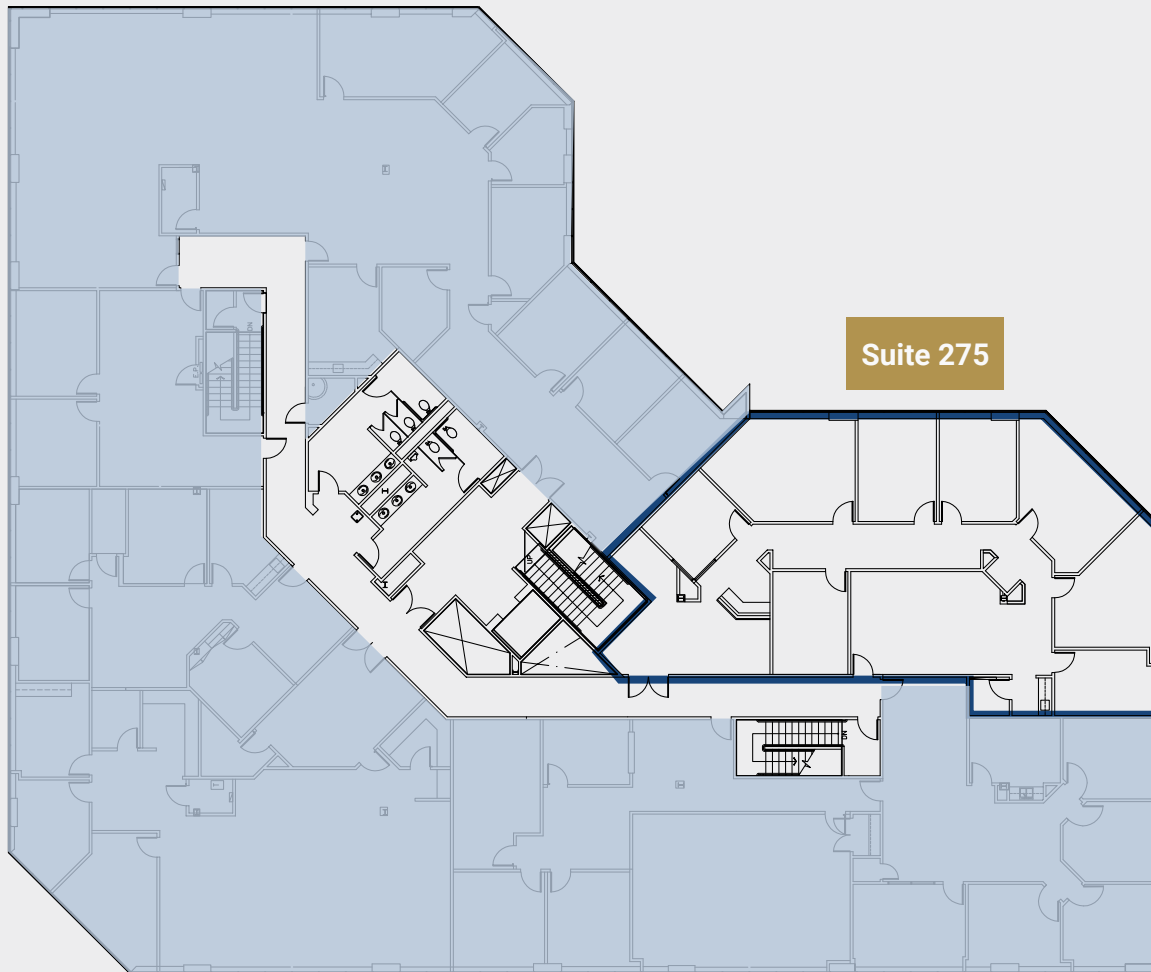
Suite 105



1ST FLOOR

# BUILDING 711

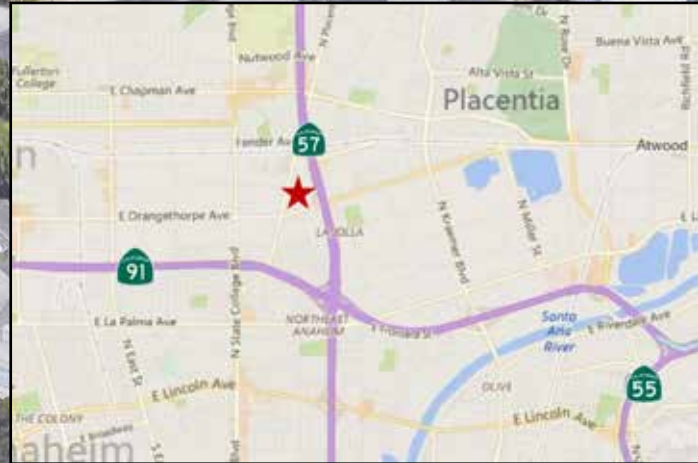
Suite 275 / ±3,553 SF



## 2ND FLOOR

PLACENTIA AVENUE

KIMBERLY AVENUE



ORANGE FWY





# PLACENTIA CORPORATE CENTER

701 & 711 Kimberly Avenue, Placentia | CA



**NEWMARK**

**TAYLOR ING**  
**Senior Managing Director**  
**t 714-271-9066**  
**taylor.ing@nmrk.com**  
**CA RE Lic. #00895164**

**RICHARD P. SUNG**  
**Senior Managing Director**  
**t 949-608-2178**  
**richard.sung@nmrk.com**  
**CA RE Lic. #01953211**

Corporate License #01355491  
The information contained herein has been obtained from sources deemed reliable but has not been verified and no guarantee, warranty or representation, either express or implied, is made with respect to such information. Terms of sale or lease and availability are subject to change or withdrawal without notice.