



# Spec Development For Lease or Sale



[www.countylinecrossing.info](http://www.countylinecrossing.info)

3017 S. County Line Road, Plant City, FL 33566

ROBINSON | WEEKS  
PARTNERS

CBRE



County Line Crossing offers a spacious and versatile layout, with a total area of  $\pm 535,507$  SF that is divisible to  $\pm 300,000$  SF.

The building features a substantial clear height of 36 feet, facilitating efficient vertical racking. The 185-foot deep truck court ensures smooth logistics and maneuverability. The facility includes 98 dock-high loading doors and 4 oversized drive-in ramps to accommodate various loading and unloading needs.

With 301 auto parking spaces and 208 trailer parking spaces, this property is designed to support extensive warehousing and distribution operations. County Line Crossing is strategically situated on County Line Road, just 1.5 miles south of the I-4 interchange, at the border of Hillsborough and Polk Counties. The I-4 Corridor location is renowned for its logistical advantages and is home to major distribution centers for companies such as Amazon, Publix, Home Depot, and O'Reilly's, among others.



$\pm 535,507$  SF

CROSS DOCK  
FACILITY

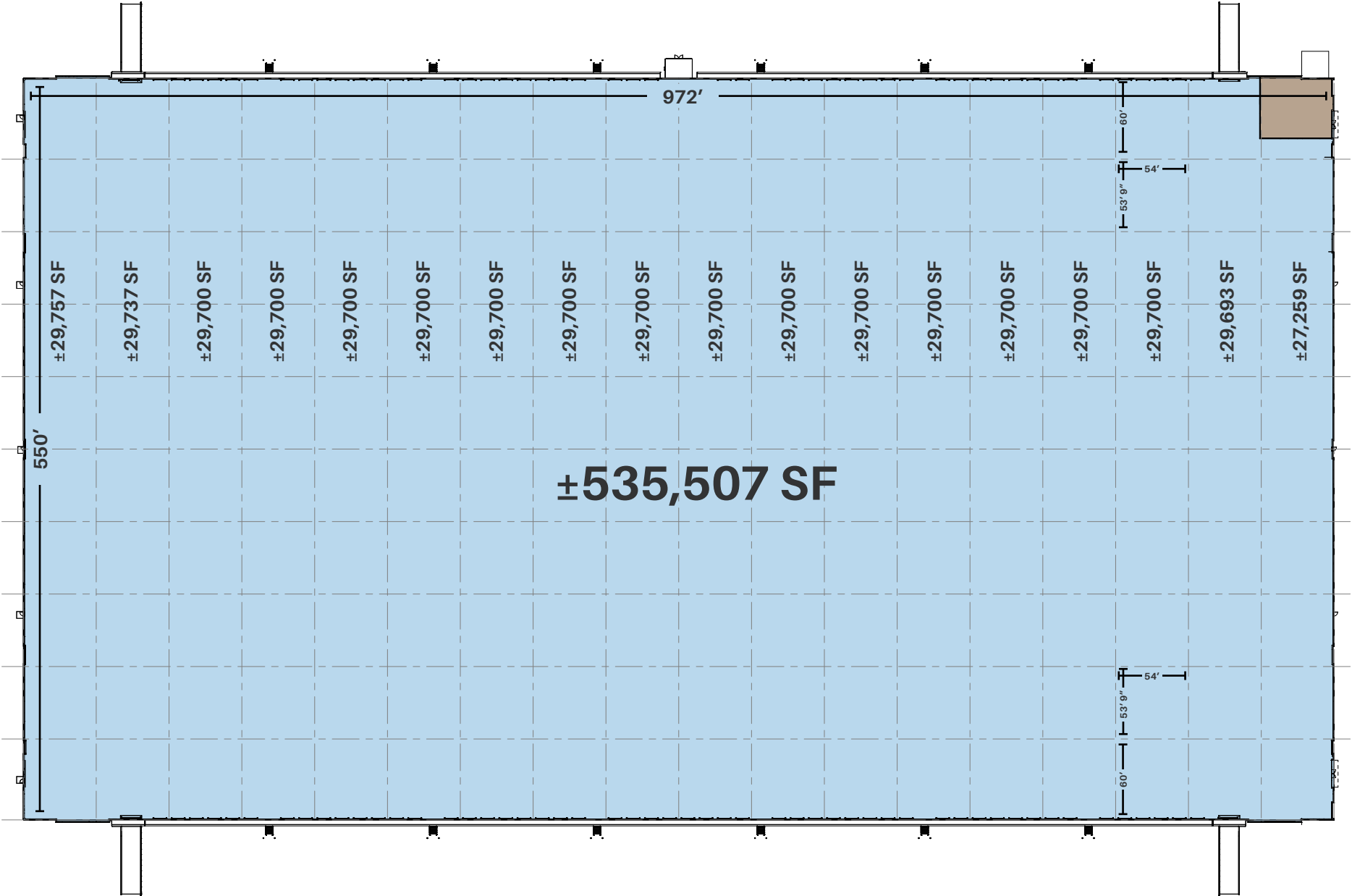


# Site Plan

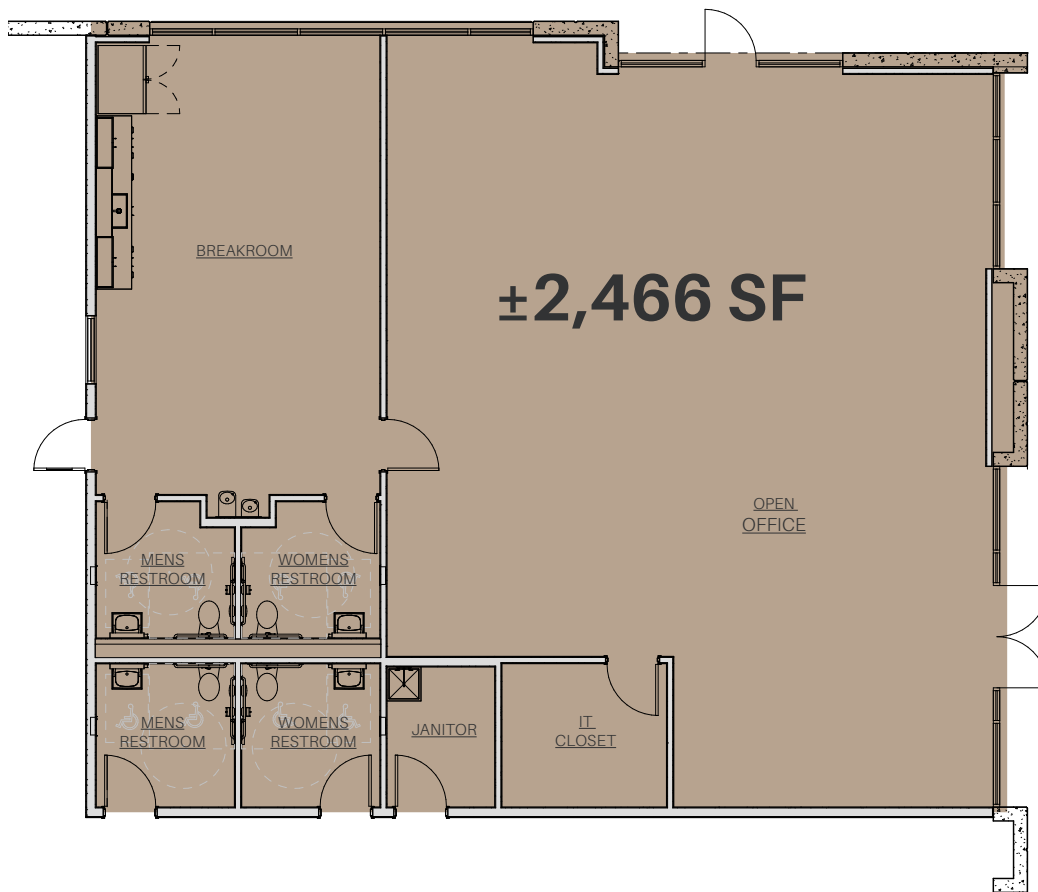


Site Area	42.62 acres
Building Area	±535,507 SF measured to drip line, excluding attached canopies
Building Dimensions	550' D x 972' L
Clear Height	36' minimum clear height at bottom of bar joist at first bay-in from truck dock
Column Spacing	54' wide x 53'9" deep typical with 60' deep spacing in staging bays
Spec Office	±2,466 SF spec office with breakroom, (2) office restrooms and (2) warehouse restrooms
Fire Protection System	ESFR system, with K-22.4 sprinkler heads at 40 psi
Fire Alarm	System monitored for tamper and flow
Automobile Parking	(301) parking spaces available
Trailer Parking	(208) trailer spaces available
Truck Court	North side: 185' South side: 135' 7" thick 4,000 psi concrete truck apron and dolly strips, heavy duty asphalt in drives and remainder of truck courts, standard duty asphalt in auto parking lots
Building Floor	7" reinforced concrete slab in speed bays with #3 rebar 16" OCEW, 4,000 psi, vapor barrier for entire slab
Electrical	3000A, 480V, 3P
Interior Lighting	LED warehouse lighting at 25FC
Exterior Lighting	LED walls packs and light poles
Dock-High Doors	(98) 9' x 10' dock doors (12 with mechanical levelers & bumpers)
Drive-In Ramp Doors	(4) drive-in ramps with a 12' x 14' door
Personnel Doors	Fire department access doors are installed per code.
Air Changes	Includes ventilation fans and louvers; total louver capacity of 0.52 air changes per hour under general ventilation conditions
Roof	45 Mil TPO single-ply white membrane mechanically fastened with: <ul style="list-style-type: none"> <li>Slope 1/2" per foot</li> <li>R-19 Rigid Insulation – one (1) layer of 2.6 insulation</li> <li>Exterior gutters and downspouts</li> <li>15-year NDL warranty</li> </ul>
Roof Structure	Metal deck supported by structural steel, conventional joist and girders
ADA	All improvements are designed and constructed per ADA accessibility guidelines

# Building Plan

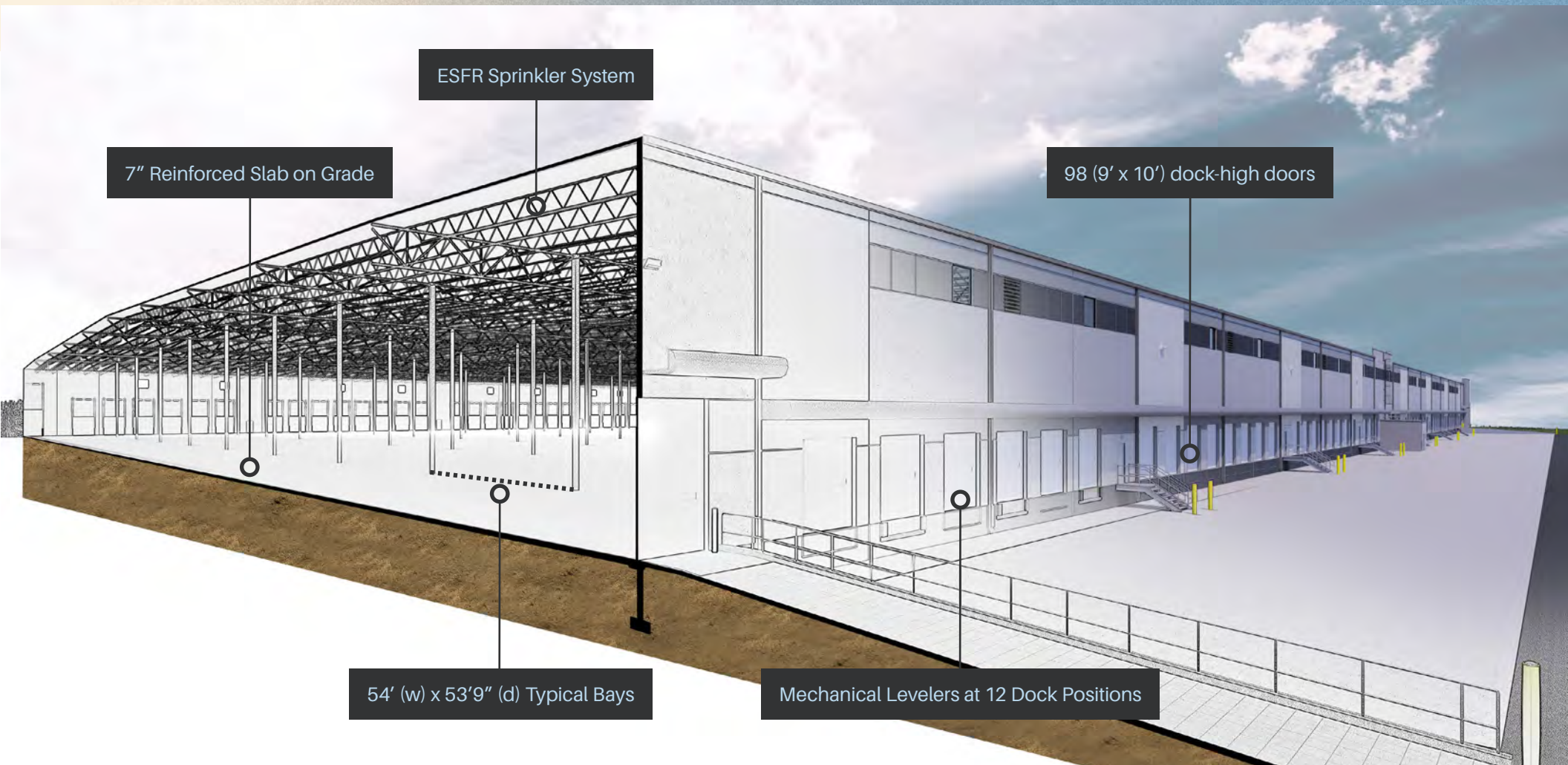


# Office Plan



# Interior Building Specifications

Spec Office	2,466 SF
Warehouse Lighting	LED warehouse lighting at 25 FC
Column Spacing	54' W x 53'9" D
Speed Bay	60'
Power	3000A, 480V, 3P
Slab Thickness	7" reinforced concrete
Fire Protection	ESFR



# MSA Overview

Distance & 2025 Total Population

## Tampa

28 Miles | 3,385,153

## Orlando

60 Miles | 2,932,740

## Miami

240 Miles | 6,279,575

## Jacksonville

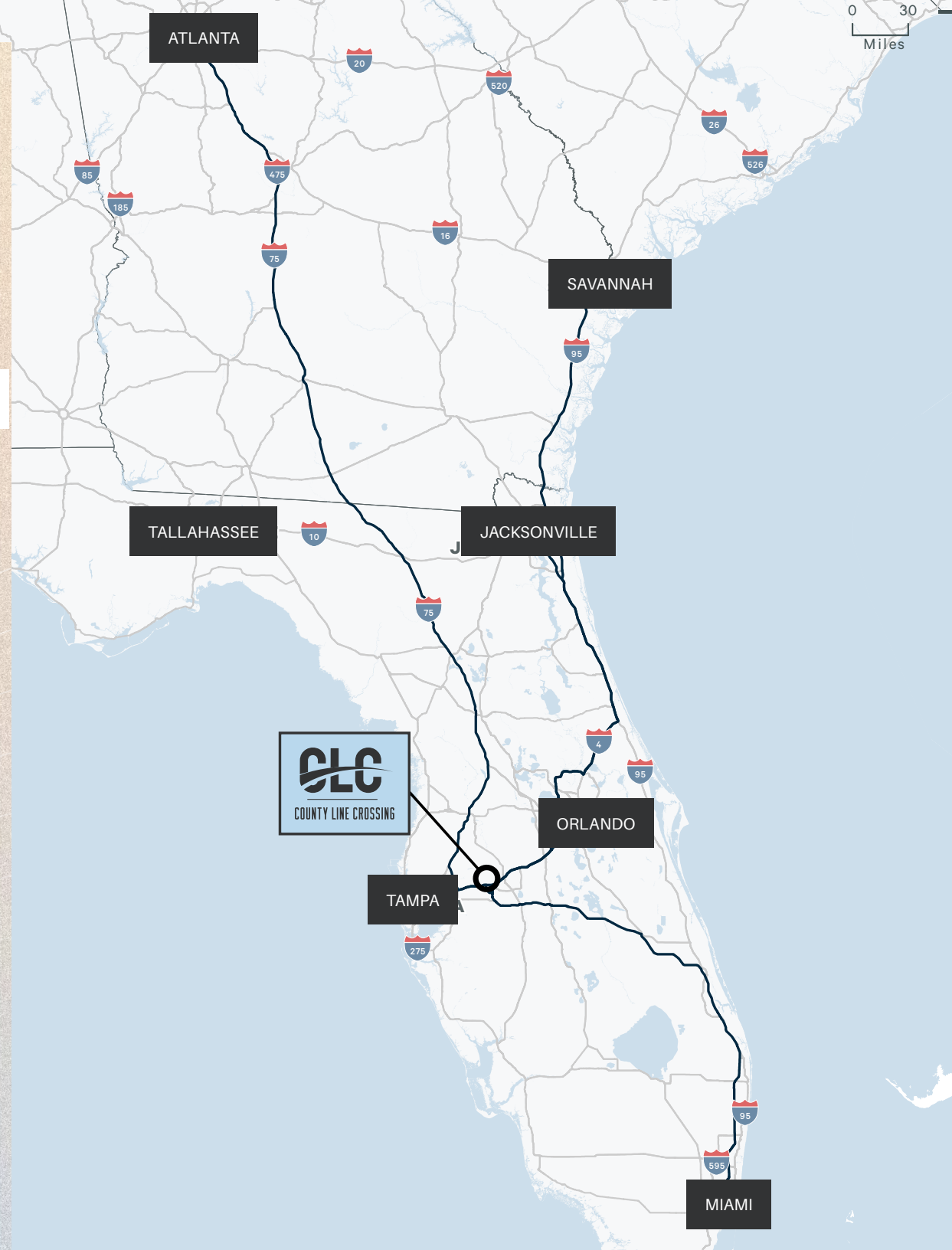
200 Miles | 1,764,628

## Atlanta

474 Miles | 6,484,964

## Savannah

337 Miles | 437,261



# Population Density

2025 Total Population

1,648,417

25 Miles

5,622,138

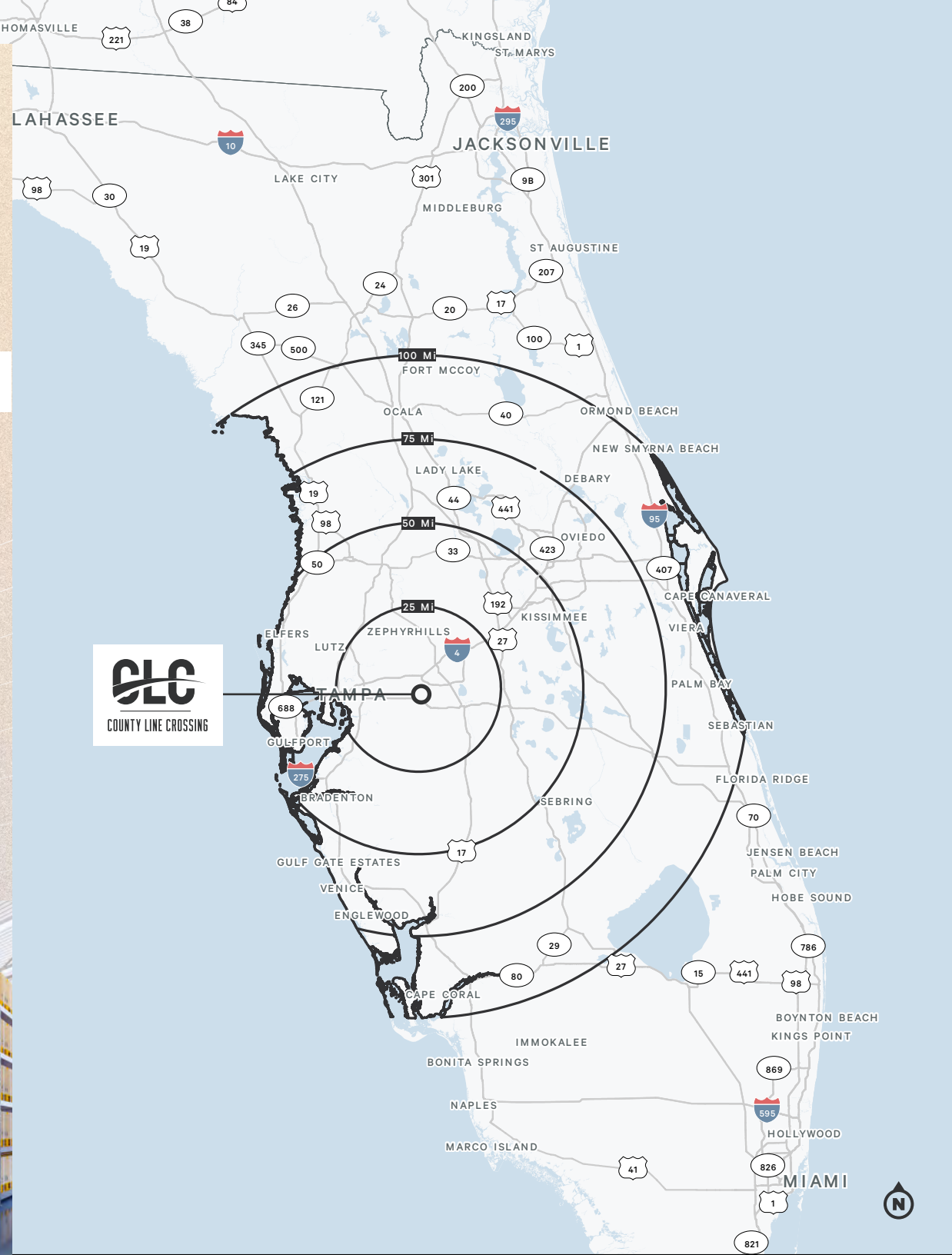
50 Miles

8,791,458

75 Miles

10,942,560

100 Miles



# Neighboring Tenants



# Drive Times

Your Map to Millions

**I-4**  
6 Minutes or 3 Miles

**SR-92**  
4 Minutes or 2.5 Miles

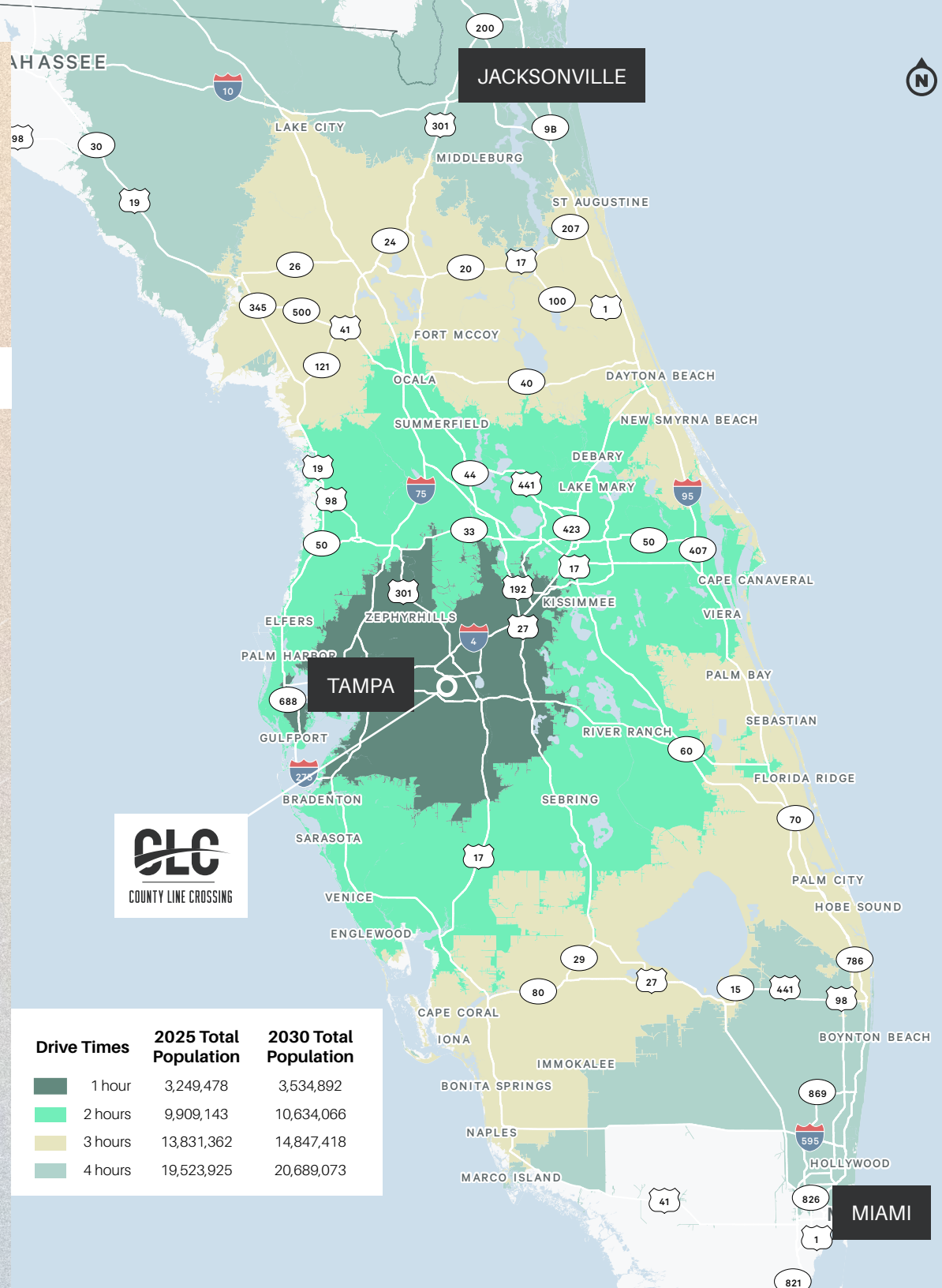
**SR-60**  
6 Minutes or 4.6 Miles

**Lakeland Linder Intl Airport**  
6 Minutes or 3.1 Miles

**Tampa**  
35 Minutes or 31.0 Miles

**Tampa Intl Airport**  
40 Minutes or 35 Miles

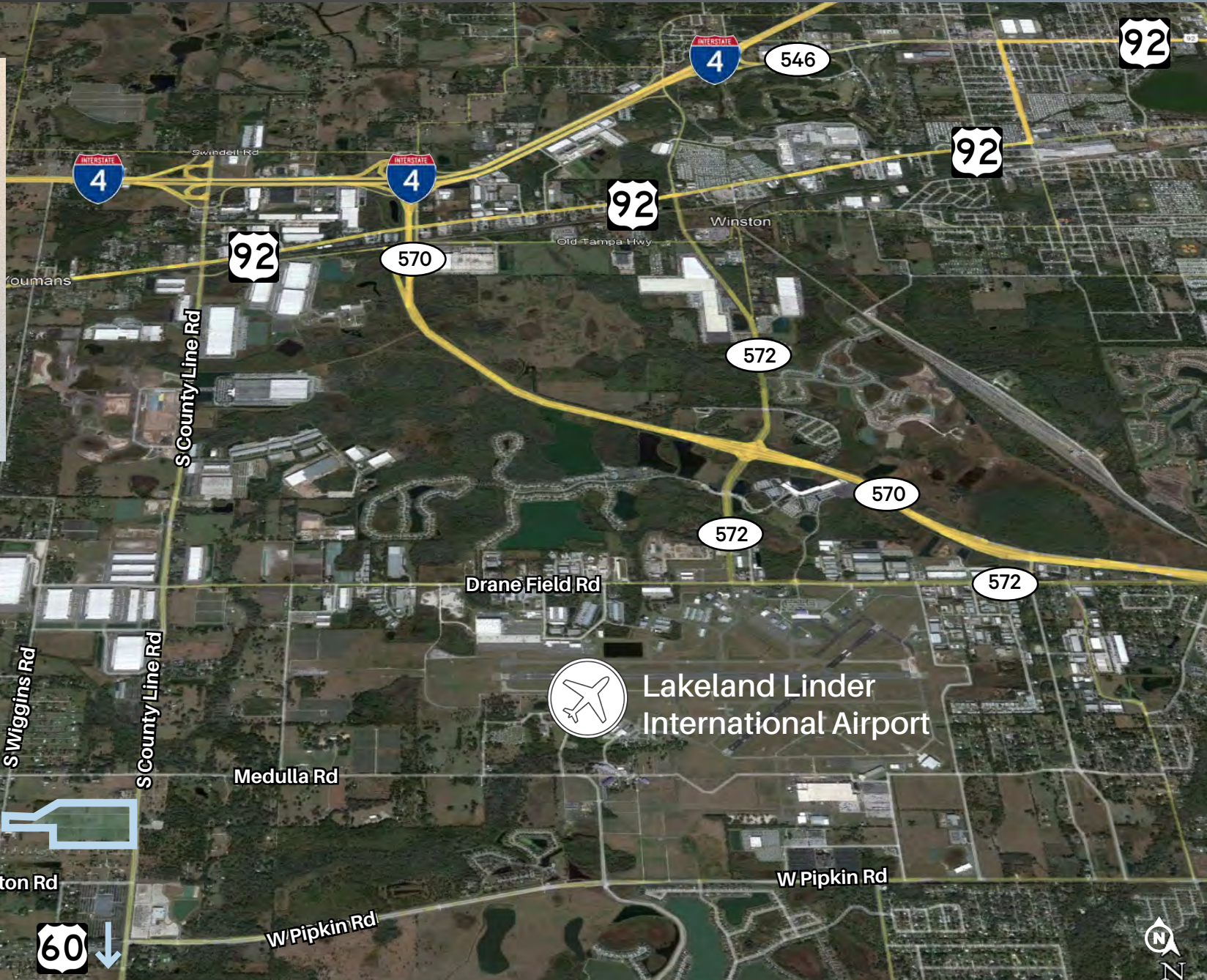
**Orlando**  
75 Minutes or 61.0 Miles



# Aerial

## Drive Times

-  **6 Minutes**  
3 MILES
-  **4 Minutes**  
2.5 MILES
-  **6 Minutes**  
4.6 MILES
-  **6 Minutes**  
3.4 MILES
-  **4 Minutes**  
2.6 MILES



# Area Overview

## 1-4 CORRIDOR



The I-4 Corridor, connecting Tampa Bay to Orlando, has emerged as one of the Southeast's largest concentrations of distribution centers, with access to nearly 11 million people within a 100-mile radius. The I-4 corridor has the 10th largest economy in the U.S. with a GDP of more than \$300 billion. According to the US Census, Polk County was the fastest growing County in the U.S. in 2023, with nearly 30,000 people moving to the area. Census data is also showing that the I-4 Corridor's population growth is projected to surpass that of South Florida in the coming years by 2 to 1. The area's significant expansion projections attract major companies like Amazon, which has established three distribution/fulfillment centers and a new air cargo complex at Lakeland Linder International Airport—Amazon Air's largest facility in the Southeast.

Florida's pro-business environment has drawn numerous distributors to the I-4 Corridor. Key incentives include no state personal or corporate income tax, ad valorem tax exemptions, no corporate franchise tax on capital stock, no state-level property tax, no property tax on business inventories, no sales tax on manufacturing machinery and equipment, no property tax on goods-in-transit for up to 180 days, no sales and use tax on goods manufactured in Florida for export, no sales tax on raw material purchases for final product resale (including non-reusable containers or packaging), and no sales/use tax on co-generation of electricity. These advantages make the I-4 Corridor an ideal location for your next distribution center.



# Developer Overview

ROBINSON | WEEKS  
PARTNERS

Robinson Weeks Partners is an industrial real estate development and investment firm. Privately held, it sponsors real estate funds and structures joint ventures to develop speculative industrial buildings, multi-phased projects and customized built-to-suits across the Southeastern United States and Texas, including Atlanta, Dallas, San Antonio, Charleston, Charlotte, Savannah, Memphis and Central Florida. The senior management team averages over 30 years of individual experience in the industrial real estate sector.

They have developed or acquired more than 100 million square feet representing \$5 billion of industrial properties across the United States since 1979.

## WHAT WE VALUE

### Relationships

We value long term, collaborative and respectful relationships

### Impact

We strive to make a difference with the people and communities we engage

### Accountability

We take ownership in everything that we do

### Transparency

We maintain complete transparency in all our actions

### Integrity

We do the right thing all the time

### Teamwork

Everyone plays a crucial role in our success and we work together toward a common vision

**\$5B**

Worth of  
Development

**100M**

Square Feet of  
Experience

**30**

Years Average of  
Industrial Career  
Experience



**COUNTY LINE CROSSING**

**KRIS COURIER**

Senior Vice President  
+ 1 813 273 8442  
kris.courier@cbre.com

**JOSH TARKOW, SIOR**

Senior Vice President  
+1 813 361 2614  
josh.tarkow@cbre.com

**MATT DAVIS**

Senior Vice President  
Leasing & Development  
+1 404 815 2015  
matt@robinsonweeks.com



[www.countylinecrossing.info](http://www.countylinecrossing.info)

3017 S. County Line Road, Plant City, FL 33566

ROBINSON | WEEKS | **CBRE**  
PARTNERS

© 2026 CBRE, Inc. All rights reserved. This information has been obtained from sources believed reliable, but has not been verified for accuracy or completeness. You should conduct a careful, independent investigation of the property and verify all information. Any reliance on this information is solely at your own risk. CBRE and the CBRE logo are service marks of CBRE, Inc. All other marks displayed on this document are the property of their respective owners, and the use of such logos does not imply any affiliation with or endorsement of CBRE. Photos herein are the property of their respective owners. Use of these images without the express written consent of the owner is prohibited.