



Gall Real Estate
Services, LLC

www.GallRE.com

PO Box 748
Salem, OR 97308

\$0.59/SF/Mo.
Lease Type:
Full Service
1,622 SF
Zoned: IP/IG

*For additional information
on this property please contact:*

Jennifer Hand
Broker
jhand@gallre.com
503.363.6051 (ph)
503.363.1791 (fax)
503.559.9839 (cell)

2558 Pringle Rd. SE
Suite E
Salem, OR 97302

For Lease

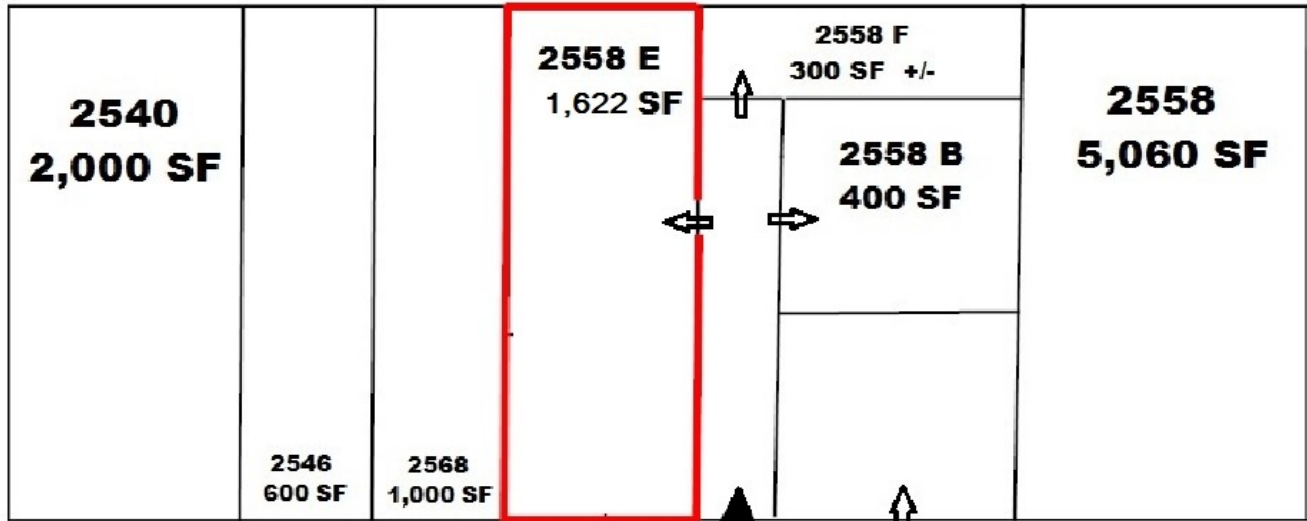


PROPERTY HIGHLIGHTS

- Multi-tenant industrial complex at the corner of McGilchrist Street and Pringle Road Southeast.
- Perfect for document storage or other smaller warehouse type uses.
- Gas fired heat.
- Ceiling Clear Height of 18 feet.
- No water or restrooms available.
- Space is accessible by a shared man door or one approximately 8' X 10' grade level door.
- Zoned Industrial Park/Industrial General.

This information has been secured from sources we believe to be reliable, but we make no representations or warranties, expressed or implied, as to the accuracy of the information. Reference to square footage or age are approximate.

**2558 Pringle Rd. SE
Suite E
Salem, OR 97302**



Shared Man Door

**\$957.00/Month
Modified Gross Lease**



For additional information on this property please contact:

Jennifer Hand, Broker
jhand@gallre.com
503.363.6051 (ph)
503.363.1791 (fax)
503.559.9839 (cell)

Gall Real Estate Services, LLC PO Box 748 Salem, OR 97308

This information has been secured from sources we believe to be reliable, but we make no representations or warranties, expressed or implied, as to the accuracy of the information. Reference to square footage or age are approximate.