



PROPERTY DESCRIPTION

Discover the perfect space for your business at 500 Pacific Ave, offering modern and versatile lease opportunities in the heart of Bremerton, WA. This prominent property boasts prime amenities, including state-of-the-art facilities, ample parking, and customizable floor plans to suit your unique needs. With its strategic location, the property provides easy access to major roadways and public transportation, ensuring convenience for employees and visitors alike. Whether you're seeking a dynamic office or retail space, the property's prime features and professional environment create an ideal platform for your business to thrive. Embrace the opportunity to elevate your business in this exceptional Bremerton location at 500 Pacific Ave.

PROPERTY HIGHLIGHTS

- Central location in Kitsap County
- Walking distance to PSNS & IMF
- Walking distance to Bremerton/Seattle Ferry Terminal

OFFERING SUMMARY

Lease Rate:	\$20.50 - 22.50 SF/yr (Gross)
Available SF:	1,043 - 8,444 SF
Lot Size:	0.38 Acres
Building Size:	51,000 SF

DEMOGRAPHICS	0.3 MILES	0.5 MILES	1 MILE
Total Households	683	1,546	4,580
Total Population	1,514	4,227	13,643
Average HH Income	\$74,930	\$85,057	\$98,352



CARLOS JARA

Commercial Broker

206.429.5380

carlos@jaracommercial.com



NOELLE BRAMBILA

Commercial Broker

206.429.5380

noelle@jaracommercial.com

JARA COMMERCIAL

Kitsap County, Bremerton, WA 98312

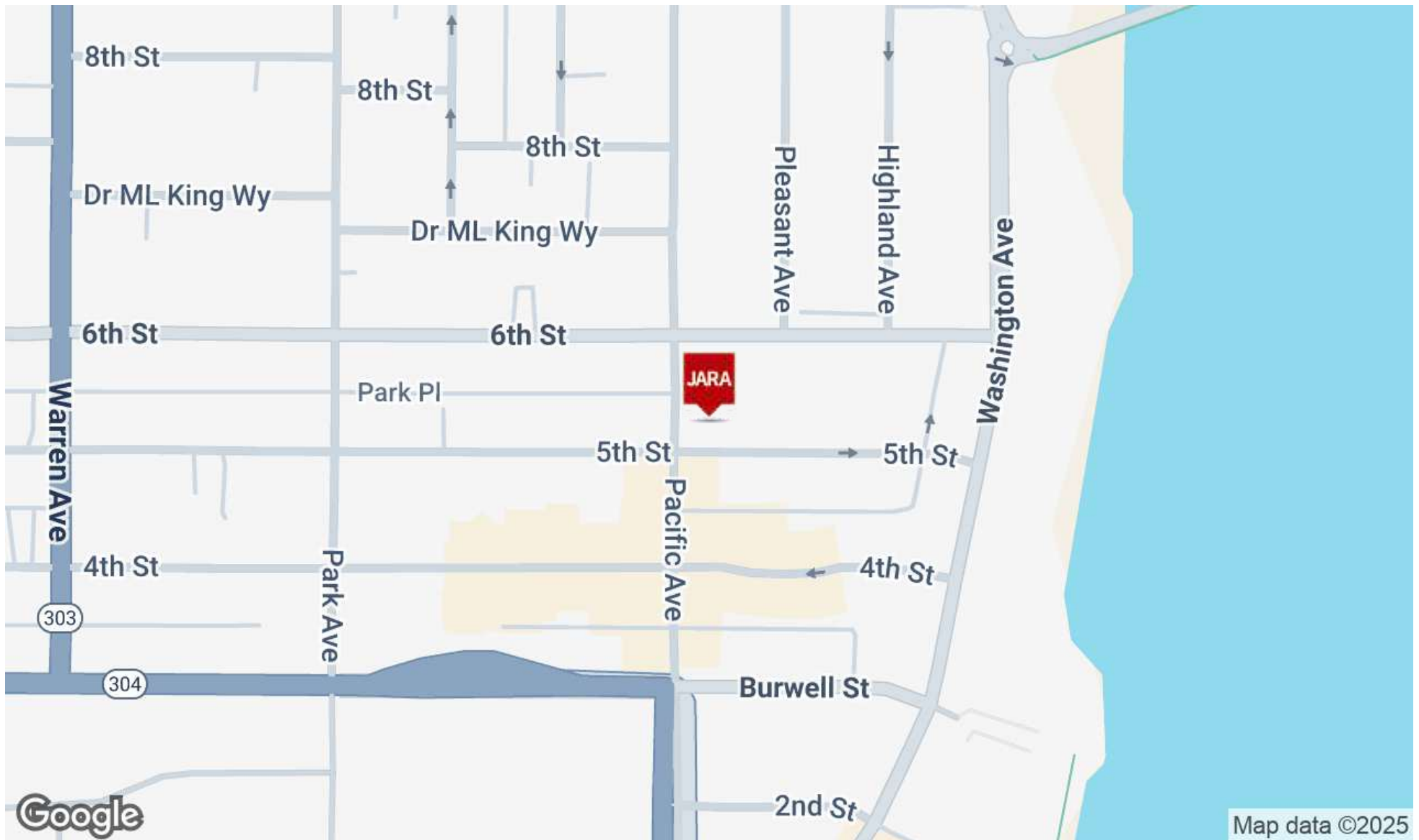
206.429.5380 | jaracommercial.com



FOR LEASE

500 Pacific 500 PACIFIC AVE, BREMERTON, WA 98337

Location Map



CARLOS JARA

Commercial Broker
206.429.5380
carlos@jaracommercial.com



NOELLE BRAMBILA

Commercial Broker
206.429.5380
noelle@jaracommercial.com

JARA COMMERCIAL

Kitsap County, Bremerton, WA 98312
206.429.5380 | jaracommercial.com

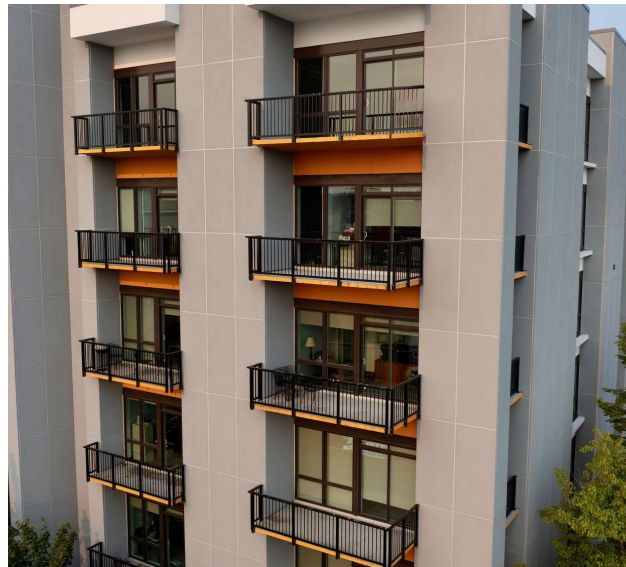


pellego

FOR LEASE

500 Pacific 500 PACIFIC AVE, BREMERTON, WA 98337

Additional Photos



CARLOS JARA

Commercial Broker
206.429.5380
carlos@jaracommercial.com



NOELLE BRAMBILA

Commercial Broker
206.429.5380
noelle@jaracommercial.com

JARA COMMERCIAL

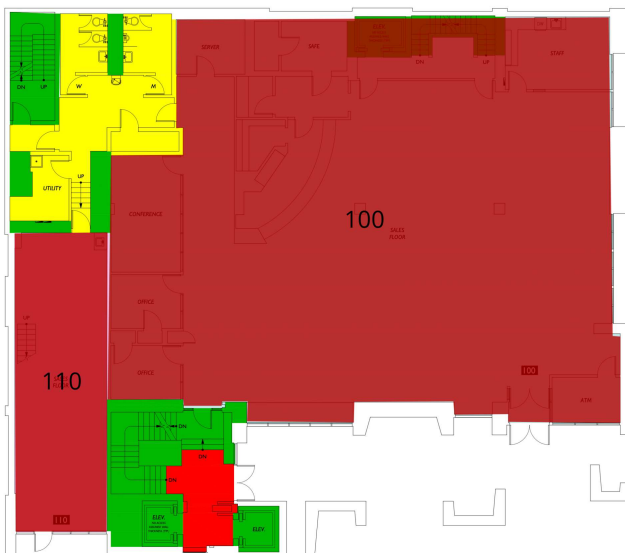
Kitsap County, Bremerton, WA 98312
206.429.5380 | jaracommercial.com



FOR LEASE

500 Pacific 500 PACIFIC AVE, BREMERTON, WA 98337

Plans



LEGEND

Available

LEASE INFORMATION

Lease Type:	Gross	Lease Term:	Negotiable
Total Space:	1,043 - 8,444 SF	Lease Rate:	\$20.50 - \$22.50 SF/yr

AVAILABLE SPACES

SUITE	TENANT	SIZE	TYPE	RATE	DESCRIPTION
110	Available	1,140 SF	Gross	\$20.50 SF/yr	This perfectly sized retail suite, facing the Admiral Theater, is a two-level space with a small mezzanine. The common area includes restrooms located in the rear hallway. Its prime location makes it ideal for a variety of retail uses.
100	Available	5,872 SF	Gross	\$20.50 SF/yr	This larger format retail space, formerly a bank branch, boasts three small offices, a break room area, and much more. The high ceilings create a unique ambiance that suits various restaurant or brewery operators, as well as other retail establishments.



CARLOS JARA
 Commercial Broker
 206.429.5380
 carlos@jaracommercial.com



NOELLE BRAMBILA
 Commercial Broker
 206.429.5380
 noelle@jaracommercial.com

JARA COMMERCIAL
 Kitsap County, Bremerton, WA 98312
 206.429.5380 | jaracommercial.com



FOR LEASE

500 Pacific 500 PACIFIC AVE, BREMERTON, WA 98337

Plans



LEGEND

Available

LEASE INFORMATION

Lease Type:	Gross	Lease Term:	Negotiable
Total Space:	1,043 - 8,444 SF	Lease Rate:	\$20.50 - \$22.50 SF/yr

AVAILABLE SPACES

SUITE	TENANT	SIZE	TYPE	RATE	DESCRIPTION
402	Available	1,043 SF	Gross	\$22.50 SF/yr	This open-concept suite provides a versatile workspace for professionals. The suite faces both North and West, featuring numerous windows that flood the space with natural light and offer expansive views.



CARLOS JARA
 Commercial Broker
 206.429.5380
 carlos@jaracommercial.com



NOELLE BRAMBILA
 Commercial Broker
 206.429.5380
 noelle@jaracommercial.com

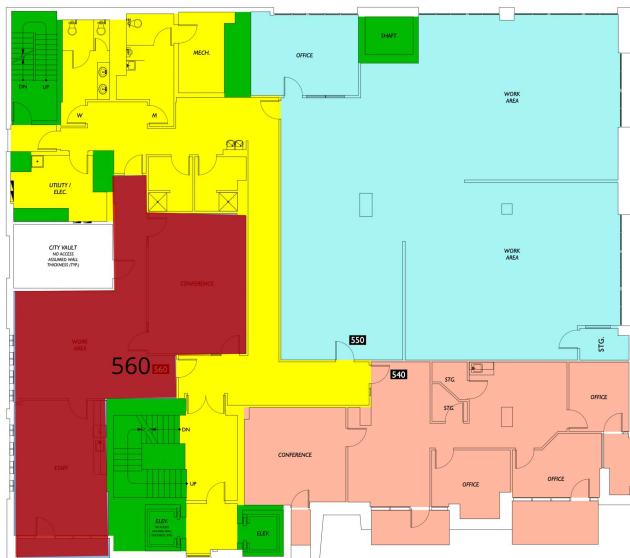
JARA COMMERCIAL
 Kitsap County, Bremerton, WA 98312
 206.429.5380 | jaracommercial.com



FOR LEASE

500 Pacific 500 PACIFIC AVE, BREMERTON, WA 98337

Plans



LEGEND

Available

LEASE INFORMATION

Lease Type:	Gross	Lease Term:	Negotiable
Total Space:	1,043 - 8,444 SF	Lease Rate:	\$20.50 - \$22.50 SF/yr

AVAILABLE SPACES

SUITE	TENANT	SIZE	TYPE	RATE	DESCRIPTION
560	Available	1,753 SF	Gross	\$22.50 SF/yr	This 5th-floor office suite boasts a spacious room ideal for a conference room, a generous break area, and a central space perfect for open-concept office setups. The suite faces North and West, offering breathtaking views of Kitsap County. A must-see!



CARLOS JARA
 Commercial Broker
 206.429.5380
 carlos@jaracommercial.com



NOELLE BRAMBILA
 Commercial Broker
 206.429.5380
 noelle@jaracommercial.com

JARA COMMERCIAL
 Kitsap County, Bremerton, WA 98312
 206.429.5380 | jaracommercial.com



FOR LEASE

500 Pacific 500 PACIFIC AVE, BREMERTON, WA 98337

Plans



LEGEND

Available

LEASE INFORMATION

Lease Type:	Gross	Lease Term:	Negotiable
Total Space:	1,043 - 8,444 SF	Lease Rate:	\$20.50 - \$22.50 SF/yr

AVAILABLE SPACES

SUITE	TENANT	SIZE	TYPE	RATE	DESCRIPTION
700	Available	1,500 - 8,444 SF	Gross	\$22.50 SF/yr	This prime location offers an amazing view of the sound and the surrounding mountains. It's an ideal spot for your regional corporate office, catering to the Department of Defense, contractors, professional services, and more. Additionally, this unique setting could serve as a great venue for a restaurant or bar.



CARLOS JARA
 Commercial Broker
 206.429.5380
 carlos@jaracommercial.com



NOELLE BRAMBILA
 Commercial Broker
 206.429.5380
 noelle@jaracommercial.com

JARA COMMERCIAL
 Kitsap County, Bremerton, WA 98312
 206.429.5380 | jaracommercial.com



FOR LEASE

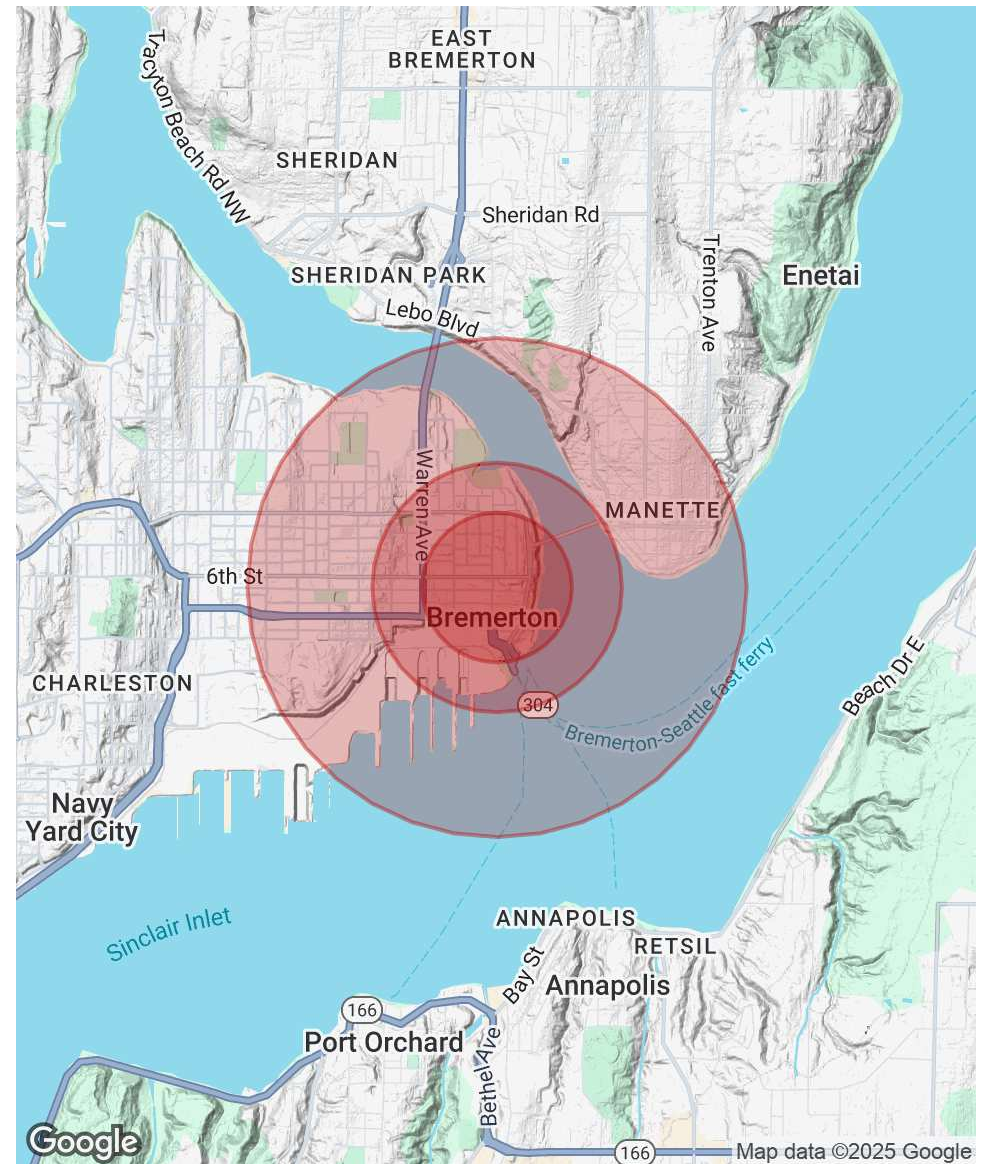
500 Pacific 500 PACIFIC AVE, BREMERTON, WA 98337

Demographics Map & Report

POPULATION	0.3 MILES	0.5 MILES	1 MILE
Total Population	1,514	4,227	13,643
Average Age	38	35	35
Average Age (Male)	38	35	34
Average Age (Female)	39	36	35

HOUSEHOLDS & INCOME	0.3 MILES	0.5 MILES	1 MILE
Total Households	683	1,546	4,580
# of Persons per HH	2.2	2.7	3
Average HH Income	\$74,930	\$85,057	\$98,352
Average House Value	\$513,381	\$492,983	\$463,814

Demographics data derived from AlphaMap



CARLOS JARA

Commercial Broker

206.429.5380

carlos@jaracommercial.com



NOELLE BRAMBILA

Commercial Broker

206.429.5380

noelle@jaracommercial.com

JARA COMMERCIAL

Kitsap County, Bremerton, WA 98312

206.429.5380 | jaracommercial.com



pellego