

AVAILABLE FOR LEASE

10725 John Price Rd. / Charlotte, NC 28273

- +/- 19,875 sq ft for lease
 - Three (3) loading docks
 - One has drive in ramp
 - One (1) drive in door
 - Back lot could be fenced
- Zoned ML-1 (light industrial)
- 20' clear height
- Showroom
- Air-Conditioned Shop/Warehouse
- Heavy Power
- Recently Upgraded Offices/Lights/Dock Doors



[::: CLICK HERE FOR VIDEO TOUR :::](#)

Contact:

Doug Wynne / 704-965-1520
doug@perennialcommercial.com

Nick Prendergast / 804-432-4828
nick@perennialcommercial.com

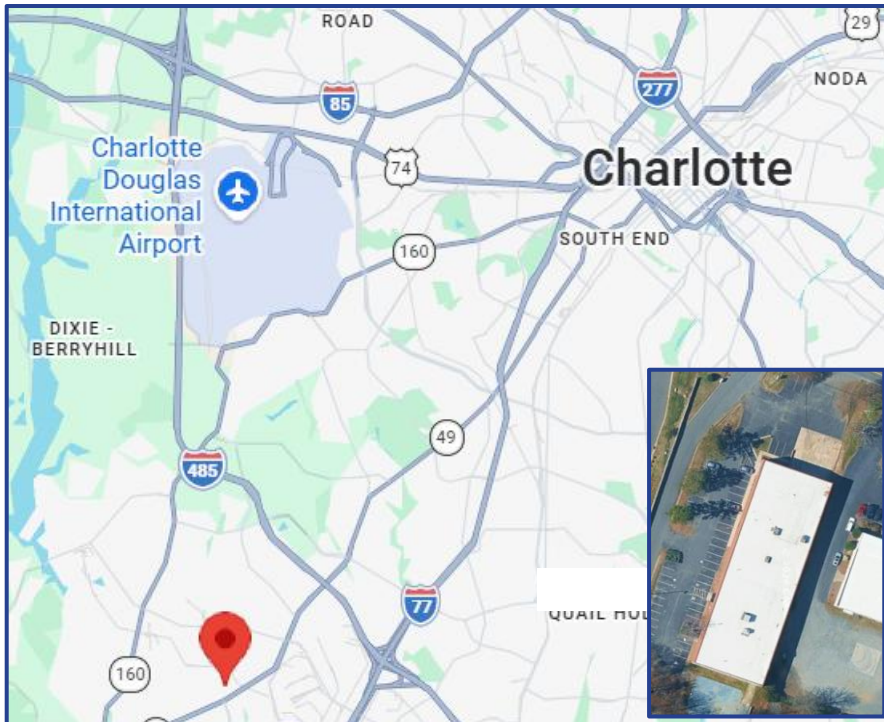
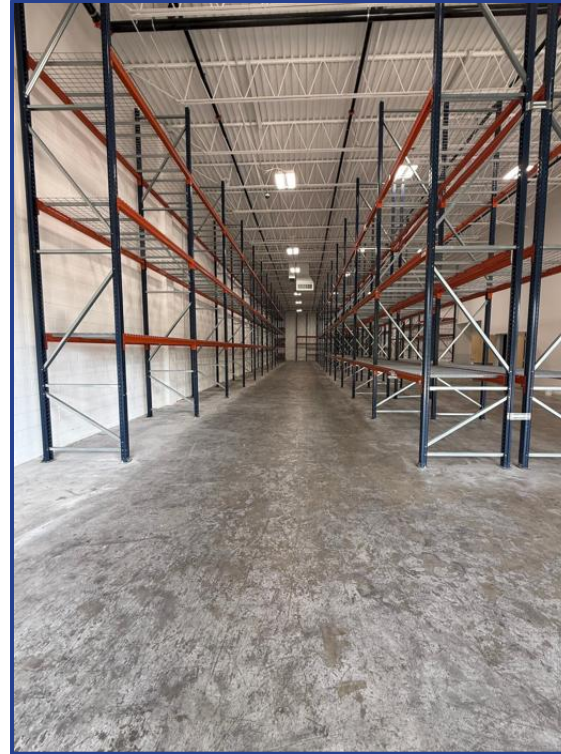
Perennial
Commercial Real Estate



~helping business succeed year after year

AVAILABLE FOR LEASE

10725 John Price Rd. / Charlotte, NC 28273



Contact:

Doug Wynne / 704-965-1520 / doug@perennialcommercial.com

Nick Prendergast / 804-432-4828 / nick@perennialcommercial.com

Perennial
Commercial Real Estate

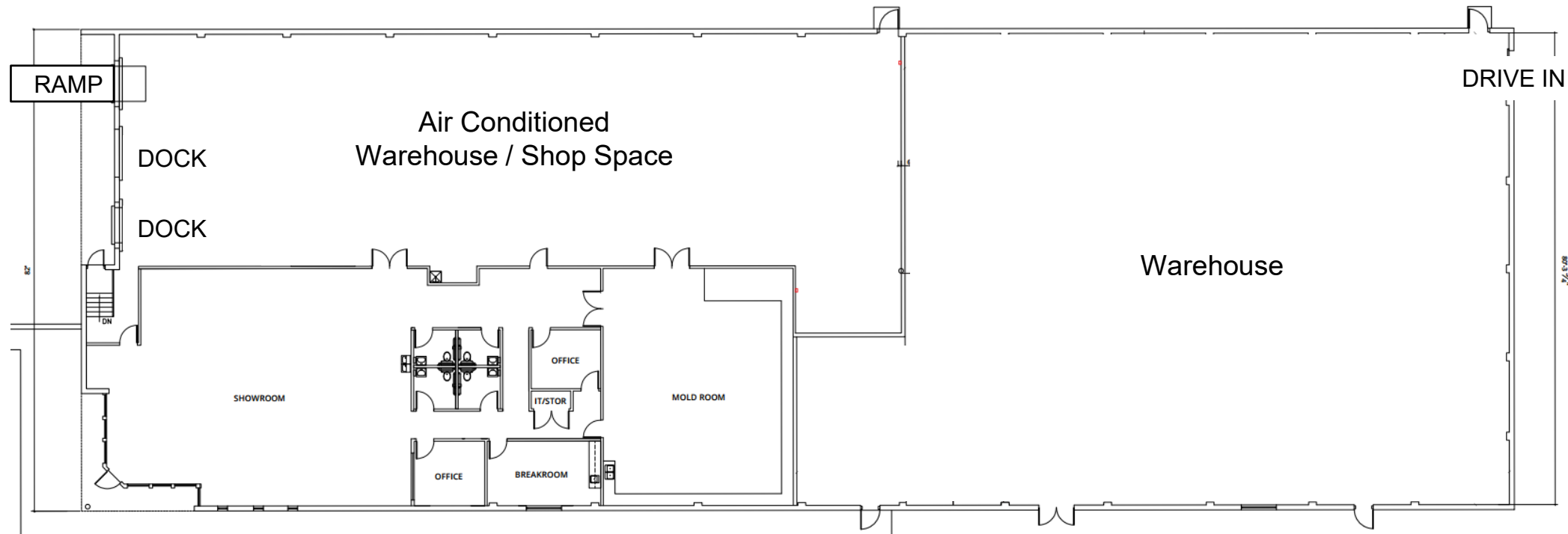


~helping business succeed year after year

AVAILABLE FOR LEASE

10725 John Price Rd. / Charlotte, NC 28273

+/- 19,875 sf



Perennial 
Commercial Real Estate

~helping business succeed year after year

AVAILABLE FOR LEASE

10725 John Price Rd. / Charlotte, NC 28273

- Previously demised into two suites and will consider two tenants
 - Suite A: +/- 11,105 sf
 - Three (3) loading docks
 - One as drive in ramp
 - Showroom
 - Fully Conditioned Space
 - Suite B: +/- 8,770 sf
 - One (1) drive in door
 - Back lot could be fenced

