

GREEN STREET DEPOT

5724 N. Green Street Brownsburg, IN 46112



MIDLAND ATLANTIC
PROPERTIES



PROPERTY OVERVIEW

37,608 square foot two-story new mixed use development that is part of the Downtown Brownsburg Revitalization District.

PROPERTY HIGHLIGHTS

- Mixed Use Development Featuring Retail and Office Space
- 2,720 Square Feet of 1st Floor Retail Space Available
- Premier Restaurant Space with Large Outdoor Dining Area
- Green Street Depot is Part of the Downtown Brownsburg Revitalization District
- 450 New Apartment Units Within Walking Distance

DEMOGRAPHICS

	1 MILE	3 MILES
Total Population	7,692	39,654
Average HH Income	\$82,771	\$102,101
Businesses	700	1,457
Employees	5,065	11,020

TRAFFIC COUNTS

Green Street	17,662
--------------	--------



PLAY DRONE VIDEO

MIDLAND ATLANTIC PROPERTIES

Indianapolis Office
3801 East 82nd Street, Suite B
Indianapolis, IN 46240

MIDLANDATLANTIC.COM

JEFF HUBLEY

Direct: 317.597.1713
Cell: 317.590.7588
jhublej@midlandatlantic.us

SHAWN HEFFERN

Direct: 317.597.1715
Cell: 317.695.8938
sheffern@midlandatlantic.us

DEVELOPMENT • BROKERAGE • ACQUISITIONS • MANAGEMENT

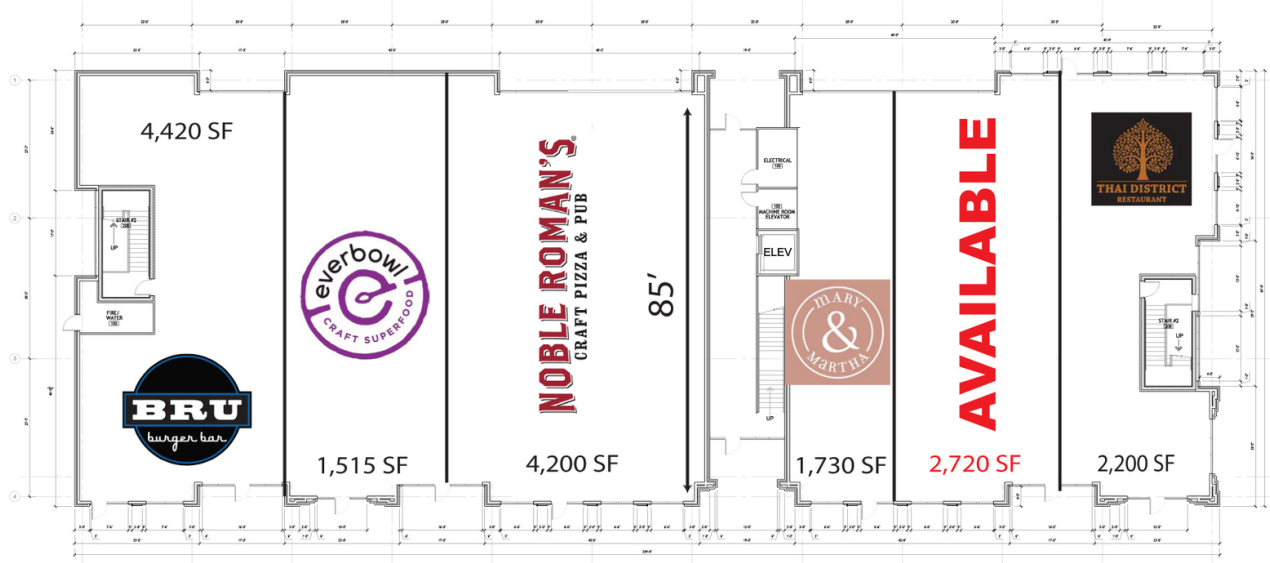
Information contained herein has been obtained from sources deemed reliable but is not guaranteed and is subject to change without notice.

GREEN STREET DEPOT

5724 N. Green Street Brownsburg, IN 46112



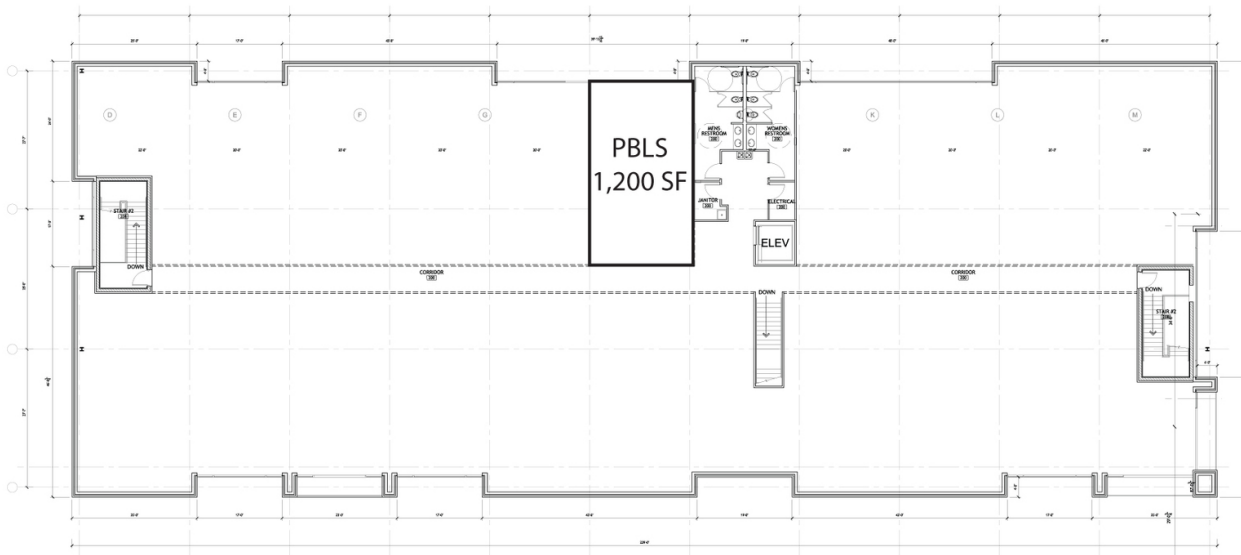
MIDLAND ATLANTIC
PROPERTIES



17,305 Square Foot - Preliminary First Floor Retail Plan

Scale: 1/16" = 1'-0"

18,735 GSF



18,160 Square Foot - Preliminary Second Floor Office Plan

Scale: 1/16" = 1'-0"

18,873 GSF

GREEN STREET DEPOT

5724 N. Green Street Brownsburg, IN 46112



MIDLAND ATLANTIC
PROPERTIES



SITE

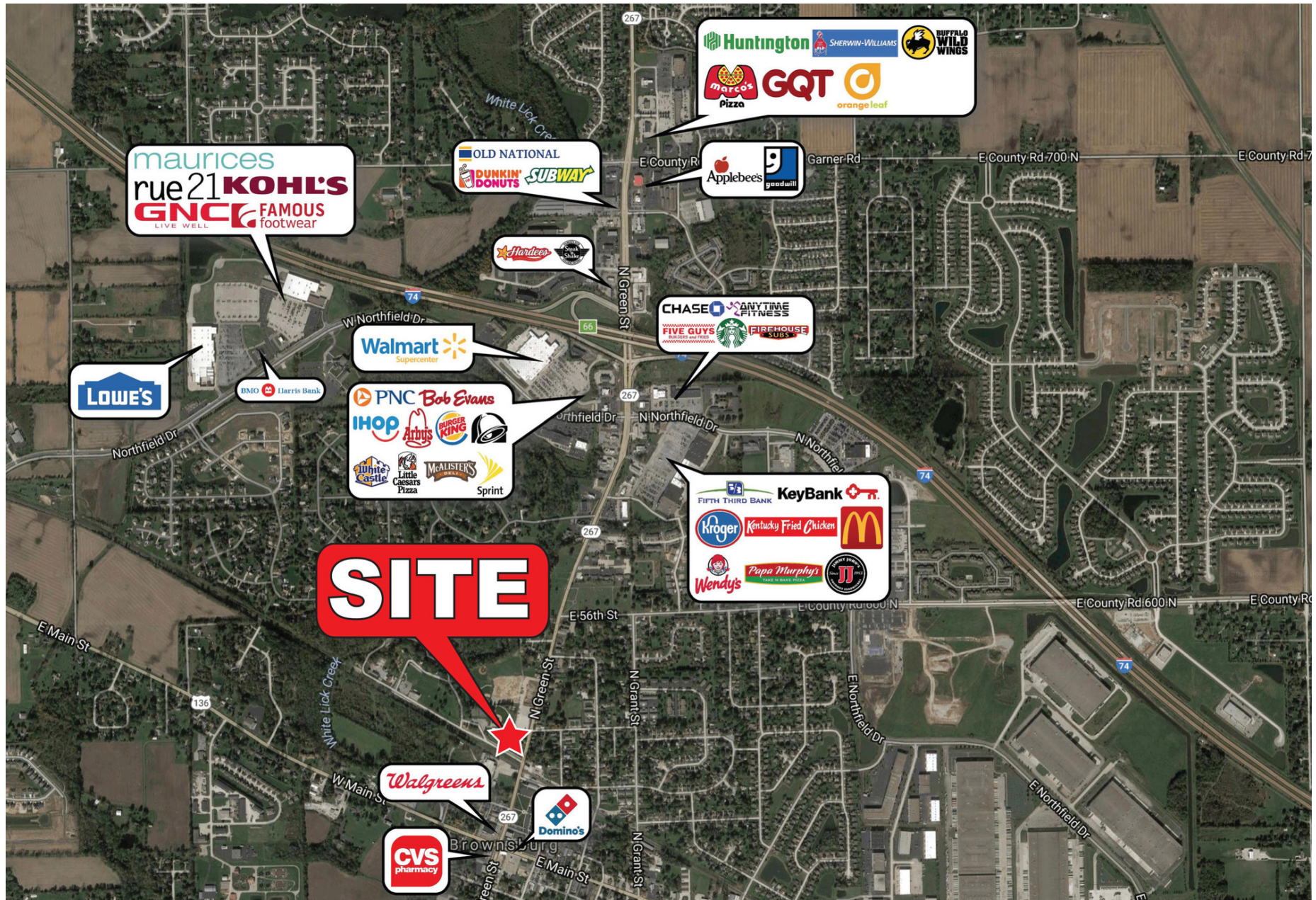
Brownsburg Town Center

GREEN STREET DEPOT

5724 N. Green Street Brownsburg, IN 46112



MIDLAND ATLANTIC
PROPERTIES

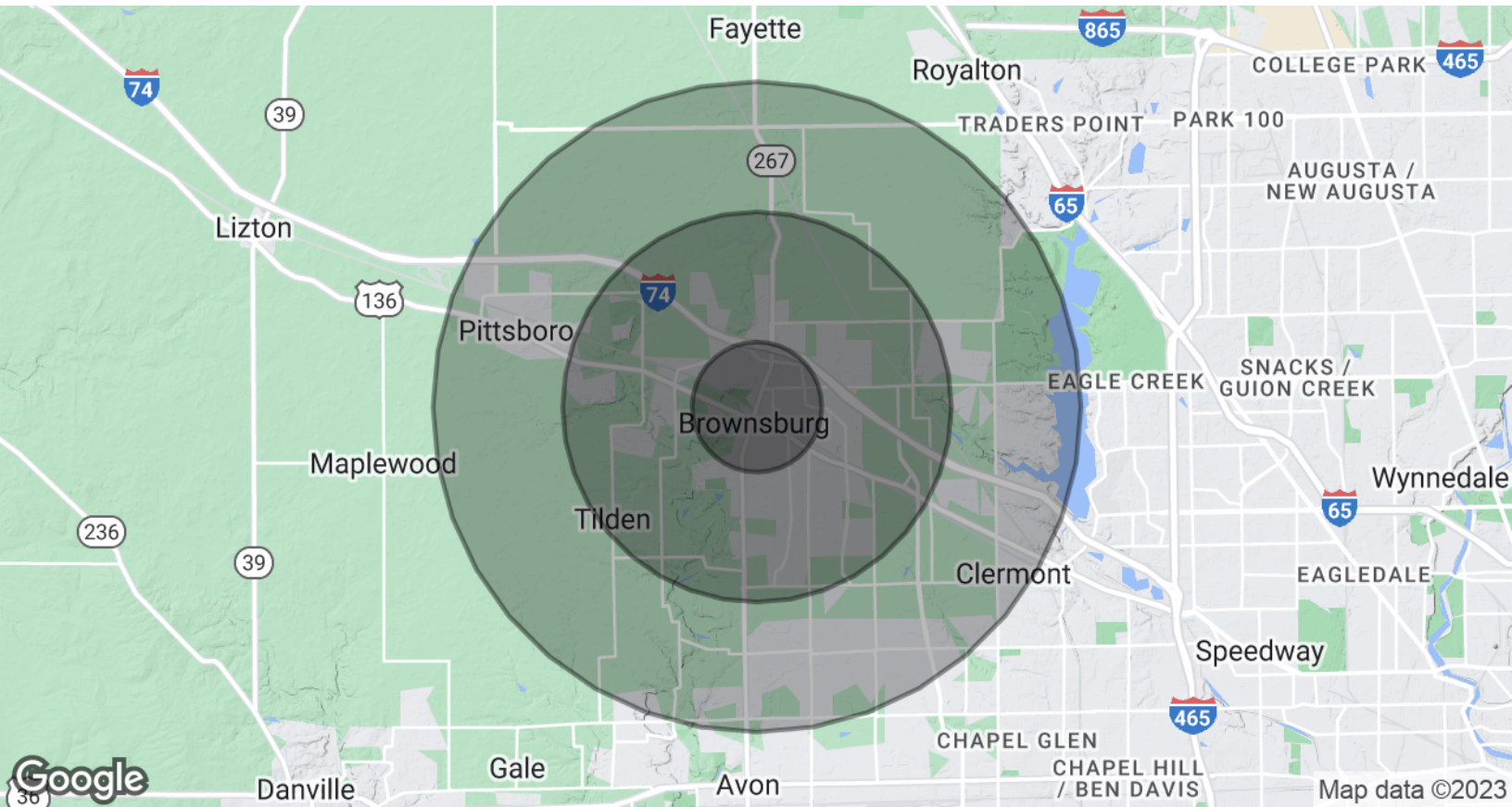


GREEN STREET DEPOT

5724 N. Green Street Brownsburg, IN 46112



MIDLAND ATLANTIC
PROPERTIES



POPULATION & HOUSING

	1 MILE	3 MILES	5 MILES
Total Population	7,692	39,654	76,749
Projected Annual Growth (2022-2027)	0.8%	1.8%	1.7%
Total Households	3,182	14,573	28,139
Median Home Value	\$205,615	\$234,073	\$235,827

INCOME & BUSINESS

	1 MILE	3 MILES	5 MILES
Average HH income	\$75,208	\$101,998	\$104,711
Daytime Population (16+ years)	6,899	19,834	45,253
Total Businesses	700	1,457	2,335
Total Employees	5,065	11,020	27,926

MIDLAND ATLANTIC PROPERTIES

Indianapolis Office
3801 East 82nd Street, Suite B
Indianapolis, IN 46240

MIDLANDATLANTIC.COM

JEFF HUBLEY

Direct: 317.597.1713
Cell: 317.590.7588
jhublej@midlandatlantic.us

SHAWN HEFFERN

Direct: 317.597.1715
Cell: 317.695.8938
sheffern@midlandatlantic.us

DEVELOPMENT • BROKERAGE • ACQUISITIONS • MANAGEMENT

Information contained herein has been obtained from sources deemed reliable but is not guaranteed and is subject to change without notice.