

JUST LEASED!
ONLY 1 UNIT LEFT



PRICE REDUCED!
±3,011 SF AVAILABLE | \$3.35/SF + NNN



PAD RETAIL FOR LEASE: WHOLE FOODS ANCHORED CENTER

650-668 N Moorpark Road, Thousand Oaks, CA 91360



JAMES HEERDEGEN
(818) 697-9379 | james@illicre.com
DRE#02197482

AUSTIN HARRELL
(818) 514-0547 | austin@illicre.com
DRE#02051633

GREG OFFSAY, CCIM
(818) 697-9387 | greg@illicre.com
DRE#01837719

TODD NATHANSON
(818) 514-2204 | todd@illicre.com
DRE#00923779



PROPERTY FEATURES

650-668 N Moorpark Road, Thousand Oaks, CA 91360






APPROX. 3,011 SF

END-CAP RETAIL SPACE AVAILABLE FOR LEASE

- ✓ Retail shops adjacent to Whole Foods Market
- ✓ End cap unit available
- ✓ Shopping center remodeled, including facade, roof, and asphalt upgrade(s)
- ✓ Paris Baguette Cafe opening next door soon
- ✓ Central Thousand Oaks location

AREA AMENITIES

- ✓ Only Whole Foods in a 20-mile radius
- ✓ High income suburban location
- ✓ Directly across from Janss Marketplace, the #1 ranked lifestyle center in the Conejo Valley
- ✓ Convenient access to 101, 23, and 118 freeways
- ✓ Located in the Eastern part of Ventura County, businesses benefit from favorable tax structure, while also being proximate to Los Angeles
- ✓ Close proximity to Amgen: area's largest employer

— DEMOGRAPHICS	1 MILE	2 MILE	3 MILE
 Population	12,953	78,504	135,195
 Avg. HH Income	\$107,920	\$130,677	\$149,105
 Daytime Pop	12,126	43,334	87,110
 Traffic Count	± 30,020 CPD ON MOORPARK ROAD		

RETAIL SPACES
THOUSAND OAKS, CA

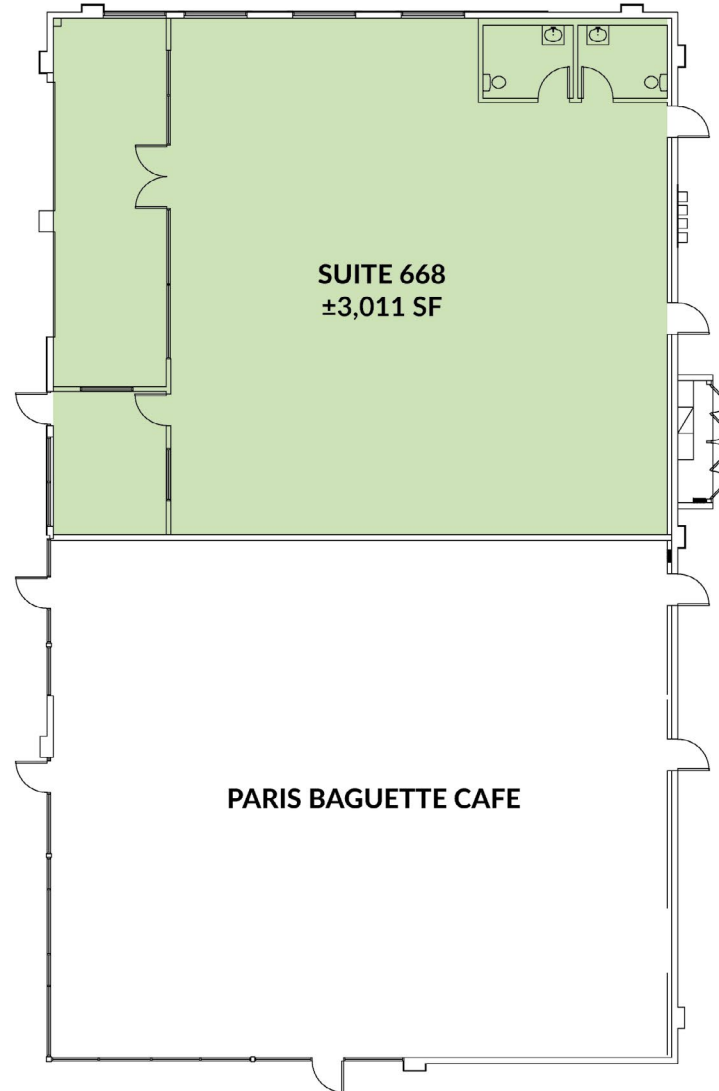
INTERIOR PHOTOS

650-668 N Moorpark Road, Thousand Oaks, CA 91360



FLOOR PLAN

650-668 N Moorpark Road, Thousand Oaks, CA 91360



Measurements are approximate only, and Broker does not guarantee their accuracy. Tenants are subject to change, and Broker makes no representation written or implied that the feature tenants will be occupying the space throughout the duration of the Lessee's tenancy. Lessee is to conduct their own due diligence before signing any formal agreements.

SITE PLAN

650-668 N Moorpark Road, Thousand Oaks, CA 91360



Measurements are approximate only, and Broker does not guarantee their accuracy. Tenants are subject to change, and Broker makes no representation written or implied that the featured tenants will be occupying the space throughout the duration of the Lessee's tenancy. Lessee is to conduct their own due diligence before signing any formal agreements.

RETAIL SPACES
THOUSAND OAKS, CA

AERIAL VIEW

650-668 N Moorpark Road, Thousand Oaks, CA 91360



Measurements are approximate only, and Broker does not guarantee their accuracy. Tenants are subject to change, and Broker makes no representation written or implied that the featured tenants will be occupying the space throughout the duration of the Lessee's tenancy. Lessee is to conduct their own due diligence before signing any formal agreements.



AERIAL MAP



**COMMERCIAL
REAL ESTATE**

JAMES HEERDEGEN
SENIOR ASSOCIATE

(818) 697-9379 | james@illicre.com
DRE#02197482

AUSTIN HARRELL
SENIOR ASSOCIATE

(818) 514-0547 | austin@illicre.com
DRE#02051633

GREG OFFSAY, CCIM
EXECUTIVE VICE PRESIDENT

(818) 697-9387 | greg@illicre.com
DRE#01837719

TODD NATHANSON
PRESIDENT

(818) 514-2204 | todd@illicre.com
DRE#00923779



5945 CANOGA AVENUE | WOODLAND HILLS, CA 91367 | 818.501.2212/PHONE | www.illicre.com | DRE #01834124

This information has been secured from sources we believe to be reliable, but we make no representations or warranties, expressed or implied, as to the accuracy of the information. References to square foot-age are approximate. References to neighboring retailers are subject to change, and may not be adjacent to the vacancy being marketed either prior to, during, or after leases are signed. Lessee must verify the information and bears all risk for any inaccuracies.