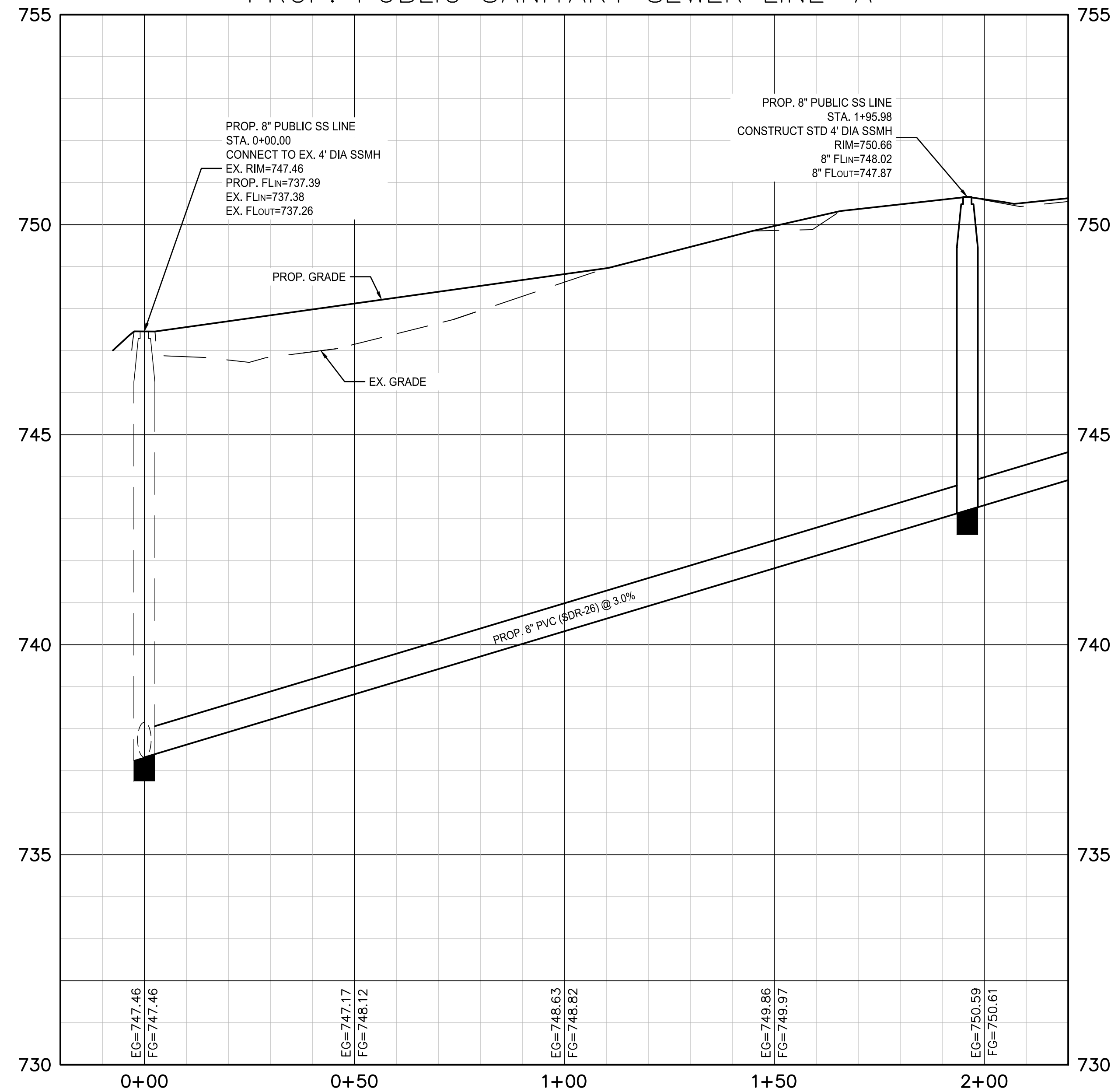


PROP. PUBLIC SANITARY SEWER LINE 'A'



Project Control:

Elevations hereon are referenced to the Texas cooperative RTK Network (NAVD 88).

TBM #1 - Box cut set on concrete storm drainage inlet with two manholes on the west side of Harris Parkway, and being 93± feet north from a utility phone cabinet.
N: 6,920,937.90 E: 2,301,150.29 ELEV: 746.70'

TBM #2 - box cut set on concrete pad on the west side of Harris Parkway
N: 6,920,474.88 E: 2,301,080.36 ELEV: 757.94'

11.03.2021 5:04PM E:\2021.000.000\2021.716.000 - HCB at 7040 Harris Pkwy - FW01 Design & Drafting\02 Civil\06 IPRCT\16SewerPlan.dwg SEWER PLAN & PROFILE (1 OF 2)

B=B
BAIRD, HAMPTON & BROWN
engineering and surveying
3801 William D. Tate Ave. Ste 500 Grapevine, TX 76051
mail@bhbc.com • 817.251.8550 • bhbc.com
TBE Firm #44 - TBEPLS FRM #1001902

CASTLE
DEVELOPMENT GROUP
CASTLE DEVELOPMENT GROUP
251 E. SOUTHLAKE BLVD., STE 100
SOUTHLAKE, TX 76092
HARRIS PKWY MEDICAL DEV.
CHISOLM TRAIL HOSPITAL ADDITION, LOTS 3&4, BLOCK 1
6640 HARRIS PKWY, FORT WORTH, TX 76132

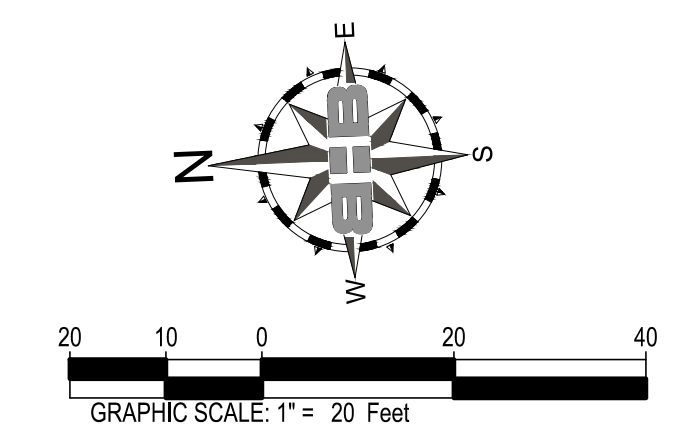
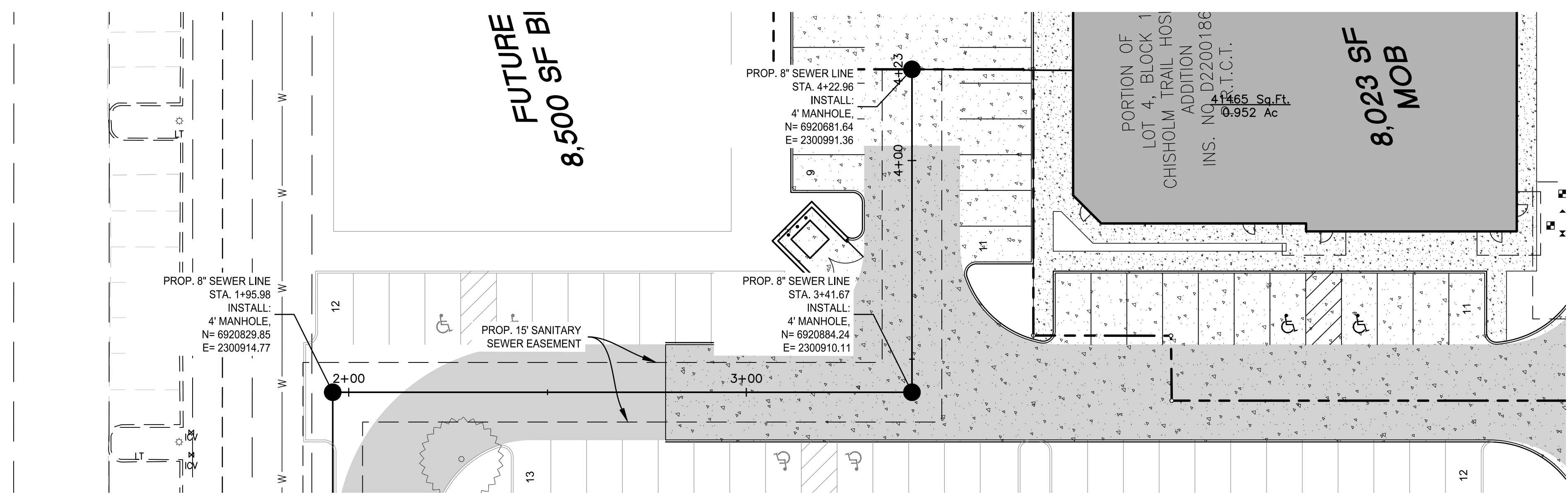
SEWER PLAN & PROFILE
(1 OF 2)

NO.	DESCRIPTION	DATE

THIS DOCUMENT IS RELEASED FOR THE PURPOSE OF INTERIM REVIEW UNDER THE AUTHORITY OF SKYLAR LYLE WIERZBICKI, PE TX 130824. IT IS NOT INTENDED FOR CONSTRUCTION, BIDDING, OR PERMIT PURPOSES.
11-3-2021

PROJECT NUMBER: 2021.716.000
DATE: 11/3/21 DRAWN BY: SLW
DESIGN BY: SLW CHECKED BY: KB
SHEET
12
12 of 18

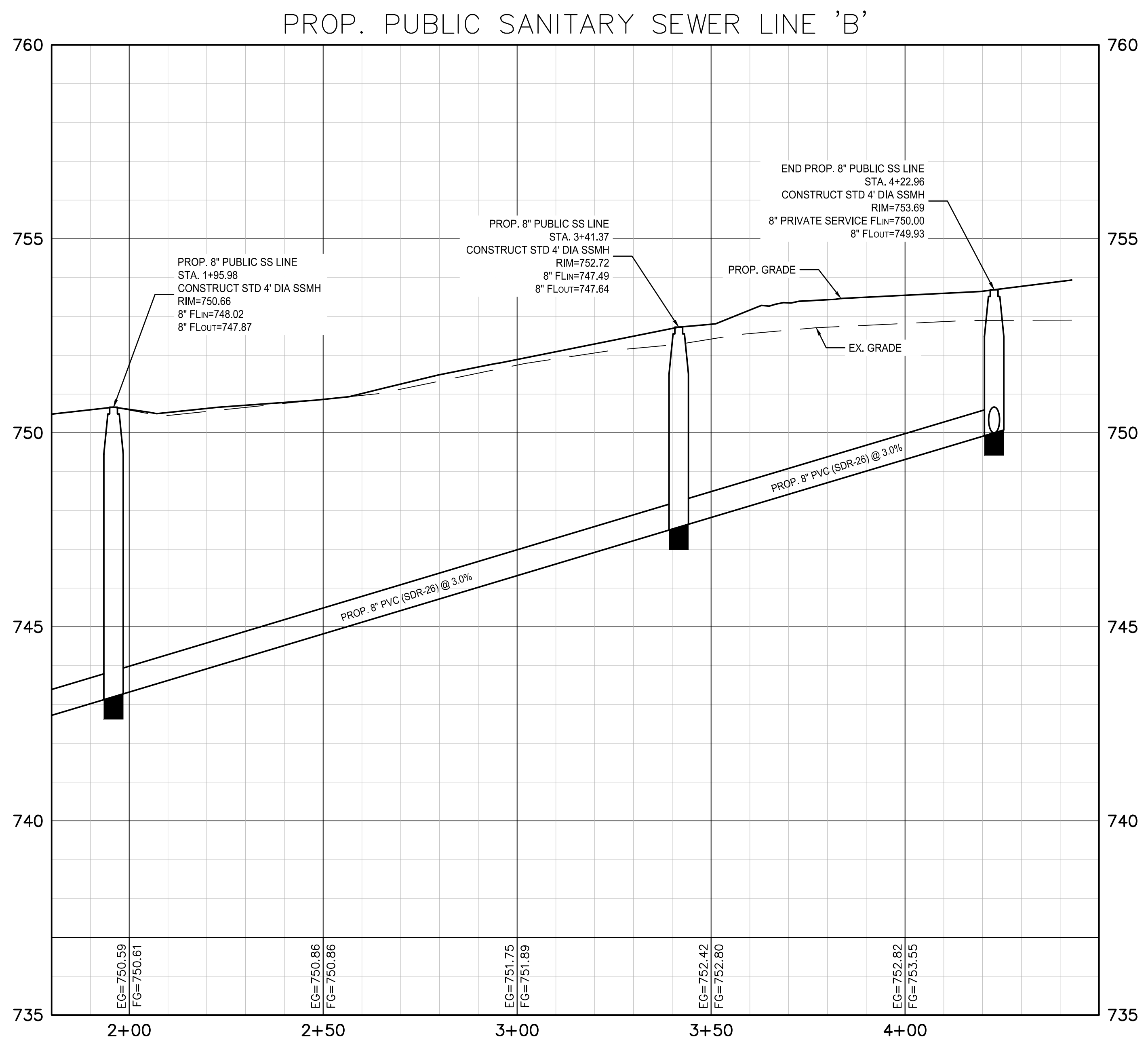
11/03/2021 5:04PM E:\2021\000\0002021\716\000 - MOB at 7040 Harris Pkwy - FW01 Design & Drafting\02 Civil\06 IPRCT\16SewerPlan.dwg SEWER PLAN & PROFILE (2 OF 2)



B=B
BAIRD, HAMPTON & BROWN
engineering and surveying
3801 William D. Tate Ave. Ste. 500 Grapevine, TX 76051
mail@bhbc.com • 817.251.8550 • bhbc.com
TBPE Firm #44 - TBPLS FRM #1001902

CASTLE DEVELOPMENT GROUP
251 E. SOUTHLAKE BLVD., STE 100 SOUTHLAKE, TX 76092

HARRIS PKWY MEDICAL DEV.
CHISOLM TRAIL HOSPITAL ADDITION, LOTS 3&4, BLOCK 1
6840 HARRIS PKWY, FORT WORTH, TX 76132



Project Control:
Elevations hereon are referenced to the Texas cooperative RTK Network (NAVD 88).

TBM #1 - Box cut set on concrete storm drainage inlet with two manholes on the west side of Harris Parkway, and being 93± feet north from a utility phone cabinet.
N: 6,920,937.90 E: 2,301,150.29 ELEV: 746.70'

TBM #2 - box cut set on concrete pad on the west side of Harris Parkway
N: 6,920,474.88 E: 2,301,080.36 ELEV: 757.94'

SEWER PLAN & PROFILE (2 OF 2)

NO.	DESCRIPTION	DATE

THIS DOCUMENT IS RELEASED FOR THE PURPOSE OF INTERIM REVIEW UNDER THE AUTHORITY OF SKYLAR LYLE WIERZBICKI, PE TX 130824.
IT IS NOT INTENDED FOR CONSTRUCTION, BIDDING, OR PERMIT PURPOSES.

11-3-2021

PROJECT NUMBER: 2021.716.000
DATE: 11/3/21 DRAWN BY: SLW
DESIGN BY: SLW CHECKED BY: KB

SHEET
13
13 of 18