

2 PARK CENTRAL

2 Park Central Drive, Southborough, MA

1,800-8,312 SF
OFFICE SPACE
FOR LEASE
SOUTHBOROUGH, MA



CAPITAL GROUP
PROPERTIES

FIRST CLASS OFFICE SPACE

2 Park Central is a 50,000 SF three-story class A office building conveniently located at the intersection of Route 9 and Route 495 in Southborough, Massachusetts. Ideally located within 35 minutes of Boston and Logan International Airport, the building is also surrounded by a variety of retail, restaurant and hotel options. With immediate availability and impressive onsite amenities, 2 Park Central is the perfect opportunity for any office user.

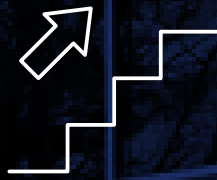
OPPORTUNITY HIGHLIGHTS



Onsite fitness center with shower facilities



Renowned building ownership



Recently renovated two-story atrium lobby



Onsite parking



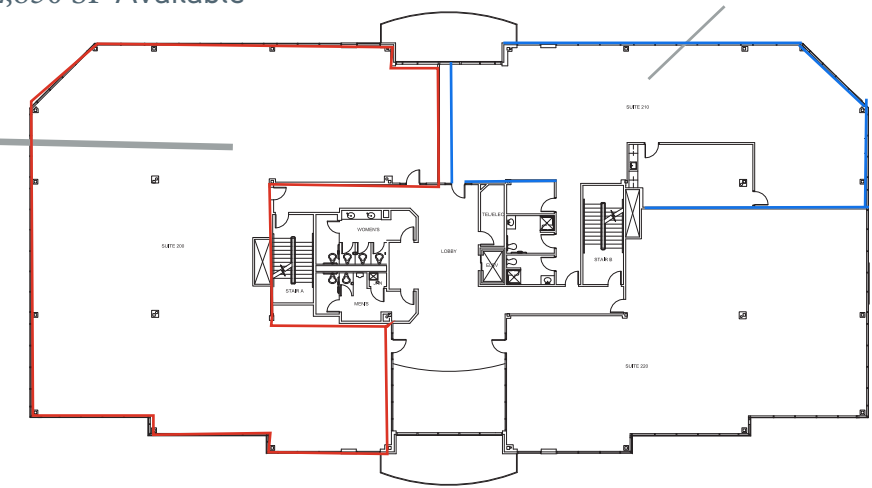
Direct access to Route 9 and Route 495

FLOOR PLANS

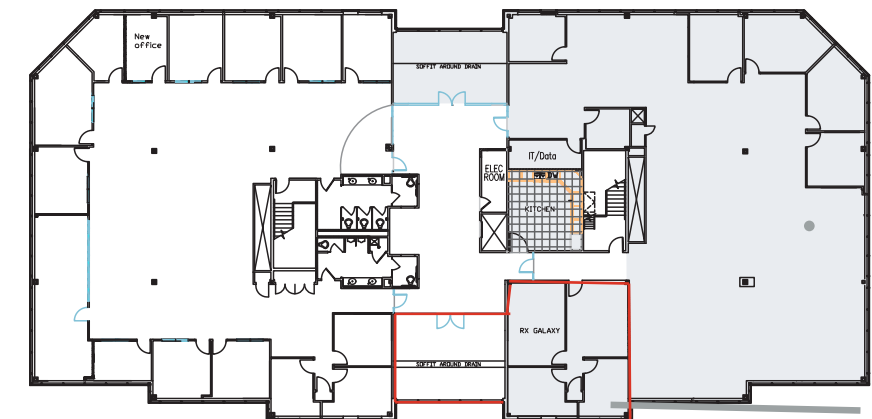
SECOND FLOOR | 12,850 SF Available

Suite 200
8,312 SF
Layout Upon Request

Suite 210
4,537 SF



THIRD FLOOR | 1,800 SF Available



Suite 310
1,800 SF

BUILDING SPECIFICATIONS

BUILDING SIZE	50,000 SF
AVAILABLE SPACE	2nd Floor Suite 200-8,312 SF 2nd Floor Suite 210 - 4,537 SF 3rd Floor: Suite 310-1,800 SF
PARKING	3.5/1,000 SF
POWER	3000 amps, 480/277v, 3ph



For more information please contact:

James Vazza
+ 508 229 1824
leasingmgr@cgpllc.net

Sam Bartoes
+ 508 229 1813
leasing2@cgpllc.net



CAPITAL GROUP
PROPERTIES

capitalgroupproperties.com