

**FOR LEASE**  
**Airport  
Office/Warehouse**

**111 SOUTHWEST 33RD STREET**

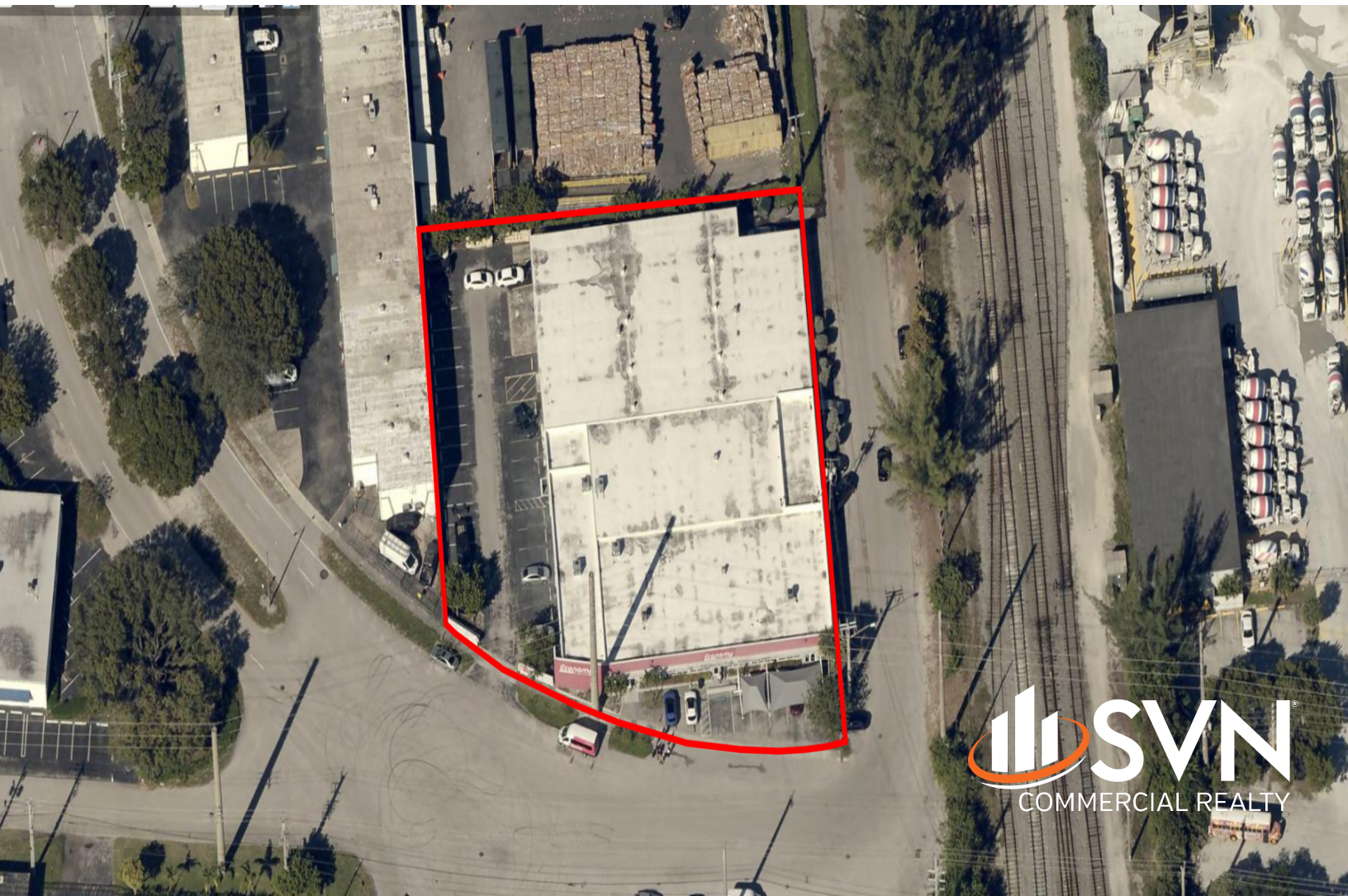
Fort Lauderdale, FL 33315

**PRESENTED BY:**

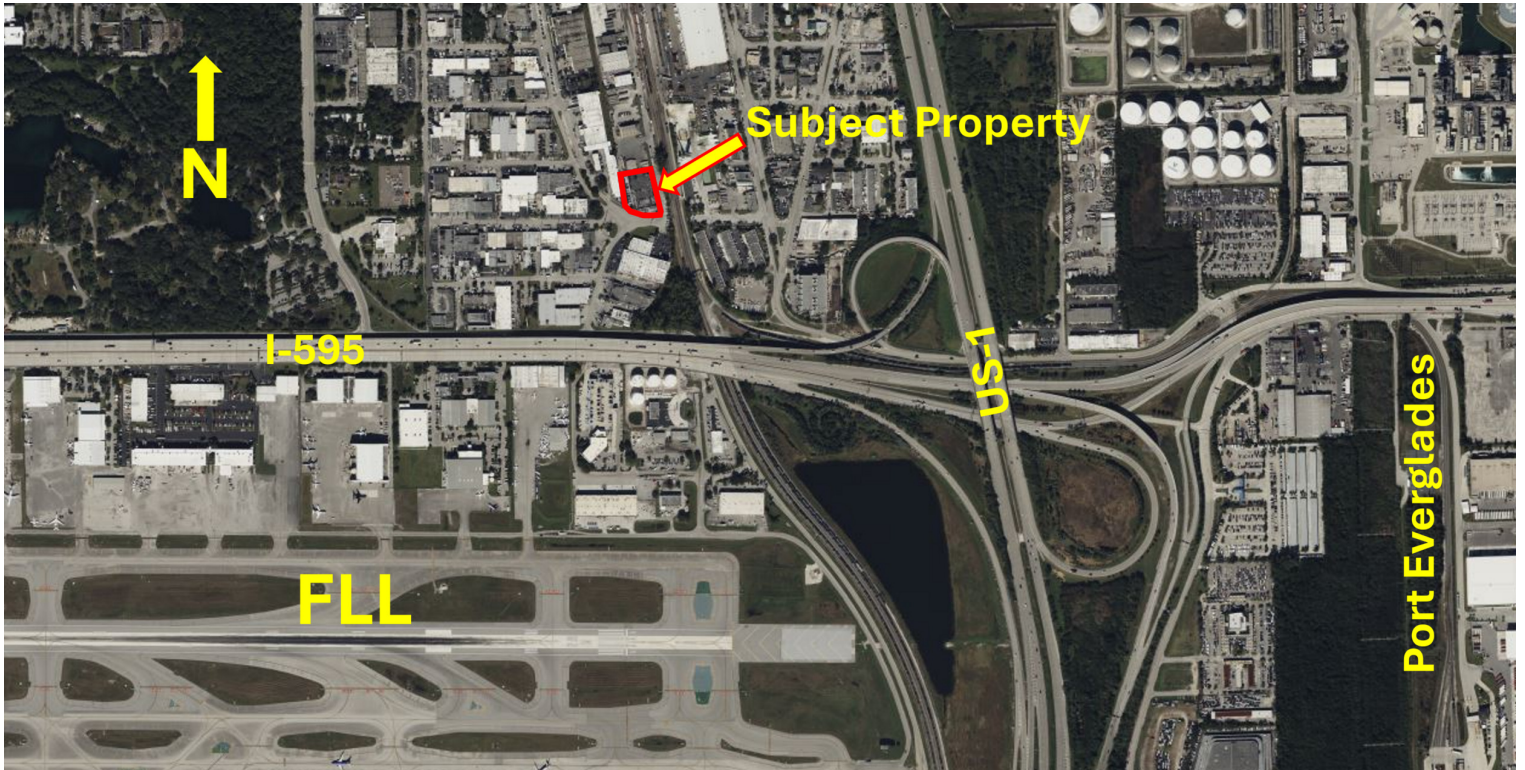
**LES BYRON, SIOR, CCIM**  
C: 954.401.4713  
les@svncr.com

**KEITH KIDWELL, SIOR, CCIM**  
C: 954.234.8777  
keith@svncr.com

**STEVE DAVIS**  
C: 954.650.7824  
steve@svncr.com



# PROPERTY SUMMARY



## OFFERING SUMMARY

<b>BUILDING SF:</b>	28,059 SF
<b>LOT SIZE:</b>	44,515 SF
<b>OFFICE SF:</b>	6,000 SF
<b>WAREHOUSE OFFICE SF:</b>	1,500 SF
<b>ZONING:</b>	I
<b>OVERHEAD DOORS:</b>	Three (3)
<b>PARKING:</b>	45 Parking Spaces
<b>LEASE RATE:</b>	\$14.90 PSF/yr (NNN)

## PROPERTY DESCRIPTION

SVN Commercial Realty is excited to bring to market the first class, freestanding office warehouse building formerly occupied by Economy Rent-A-Car and located adjacent to FLL. This spectacular building can serve a wide range of operations including manufacturing, logistics, warehousing, airport parking and marine related uses. With unparalleled access and visibility to the airport and to Port Everglades, do not miss this opportunity for consideration for your successful business!

## PROPERTY HIGHLIGHTS

- LOCATION, LOCATION LOCATION!!
- Renovated Office/Customer Counter Area
- Handicap Restroom - Six (6) Total Restrooms
- Mix of Private & Executive Offices; Open Area Workspace
- Concrete Twin T Roof
- Impact Windows

**LES BYRON, SIOR, CCIM**  
C: 954.401.4713  
les@svncr.com

**KEITH KIDWELL, SIOR, CCIM**  
C: 954.234.8777  
keith@svncr.com

**STEVE DAVIS**  
C: 954.650.7824  
steve@svncr.com

## ADDITIONAL PHOTOS



**LES BYRON, SIOR, CCIM**

C: 954.401.4713

les@svncr.com

**KEITH KIDWELL, SIOR, CCIM**

C: 954.234.8777

keith@svncr.com

**STEVE DAVIS**

C: 954.650.7824

steve@svncr.com

