

1,216 - 9,997 SF MEDICAL OFFICE FOR LEASE



# 14 FARMFIELD AVENUE

CHARLESTON, SC 29407



**MATT JOHNSON**

Associate

+1 985 237 2580

[matt.johnson@bridge-commercial.com](mailto:matt.johnson@bridge-commercial.com)

**PETER FENNELLY**

President

+1 843 425 0186

[peter.fennelly@bridge-commercial.com](mailto:peter.fennelly@bridge-commercial.com)

**BRIDGE COMMERCIAL**

25 Calhoun Street Suite 220

+1 843 535 8600

[info@bridge-commercial.com](mailto:info@bridge-commercial.com)

# THE OVERVIEW



## PROPERTY SUMMARY

14 Farmfield Avenue is a well-located medical office for lease in the heart of West Ashley. The property offers a functional layout suitable for a variety of medical and healthcare users, with convenient access, strong surrounding demographics, and ample parking in an established medical corridor.

### ADDRESS

14 Farmfield Avenue  
Charleston, SC 29407

### AVAILABLE SF

1,216 - 9,924 SF

### PARKING

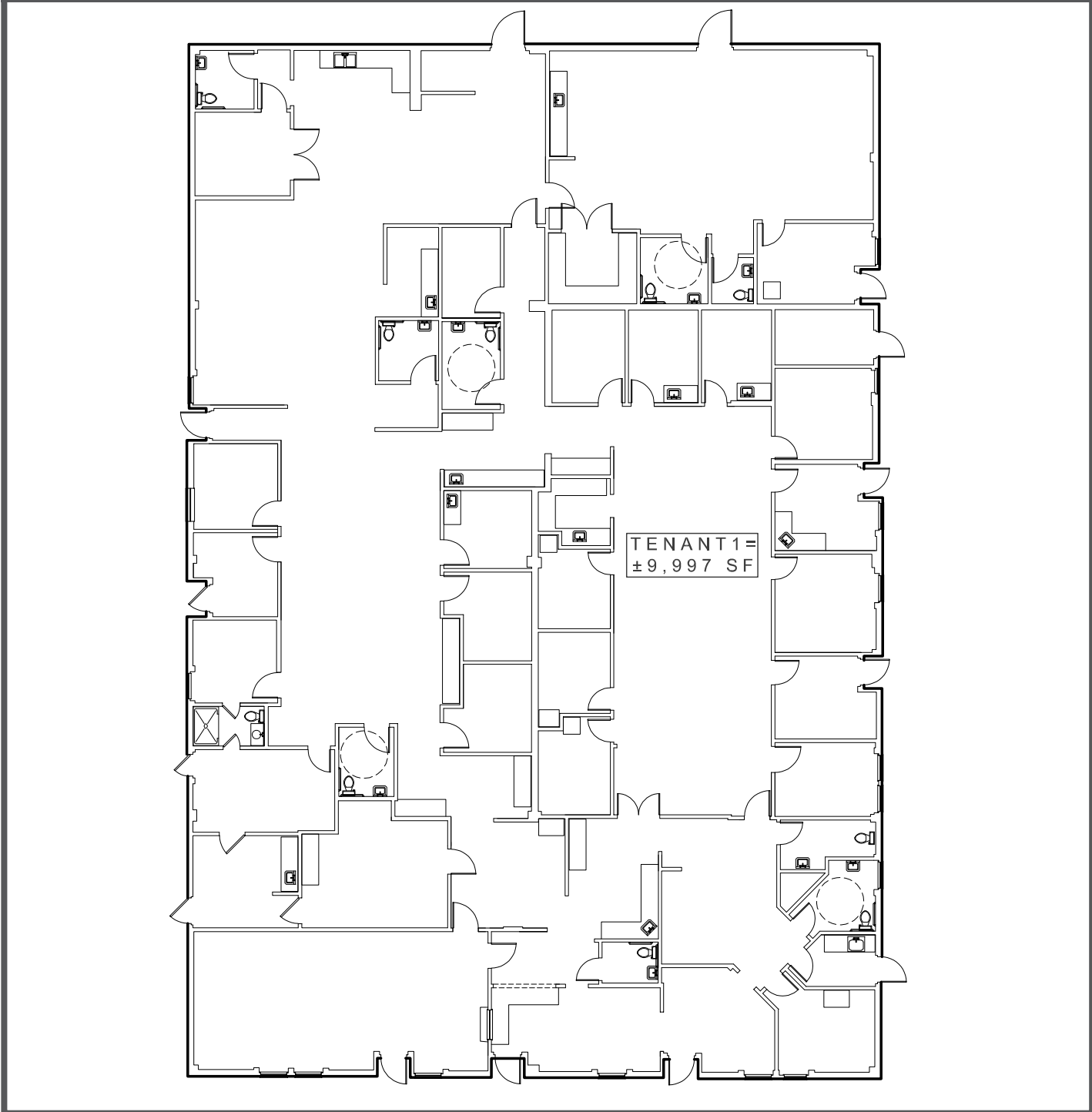
5.8/1,000

### ASKING RENT

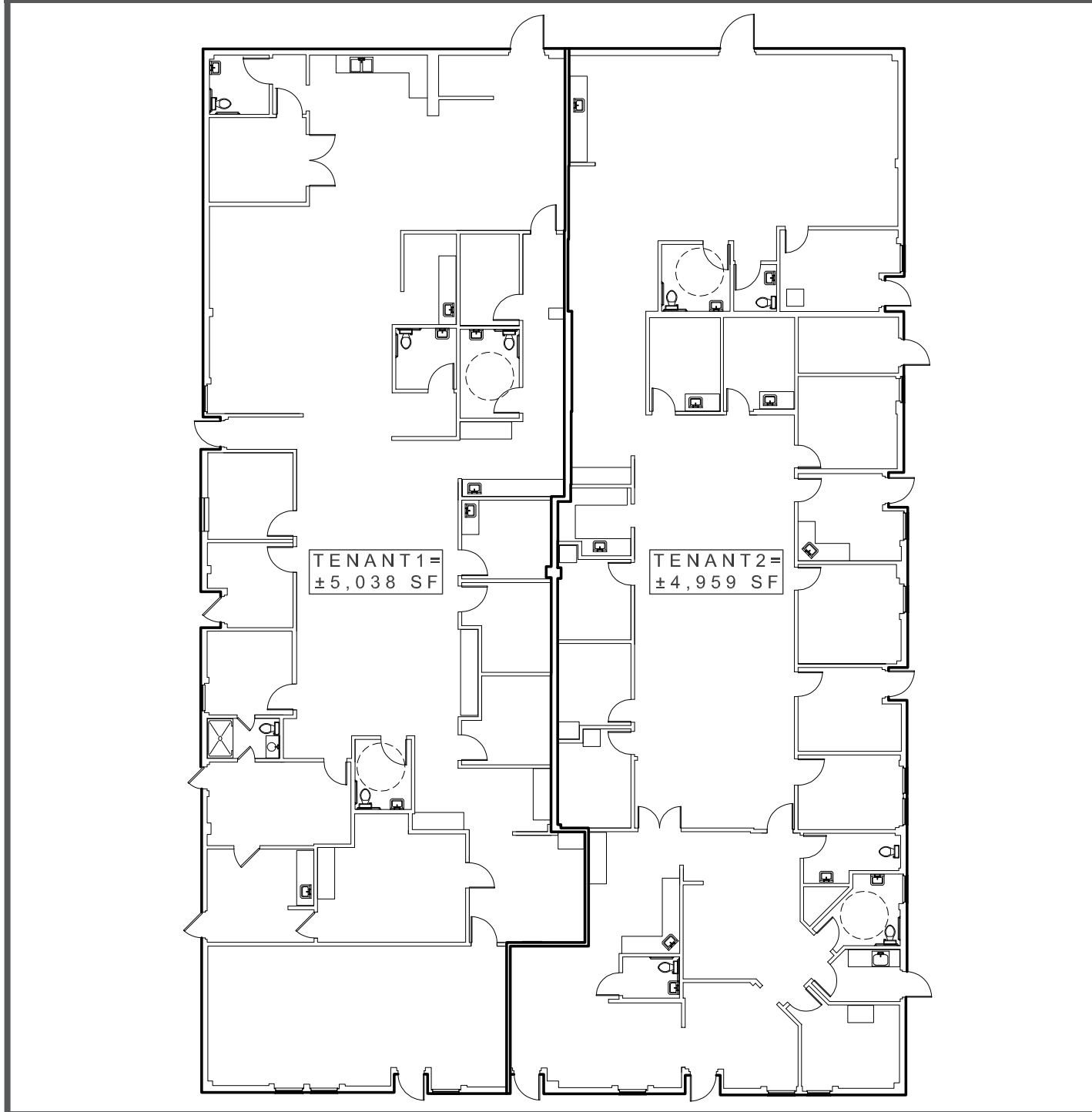
\$28 NNN

# PROPOSED FLOORPLANS

ONE TENANT

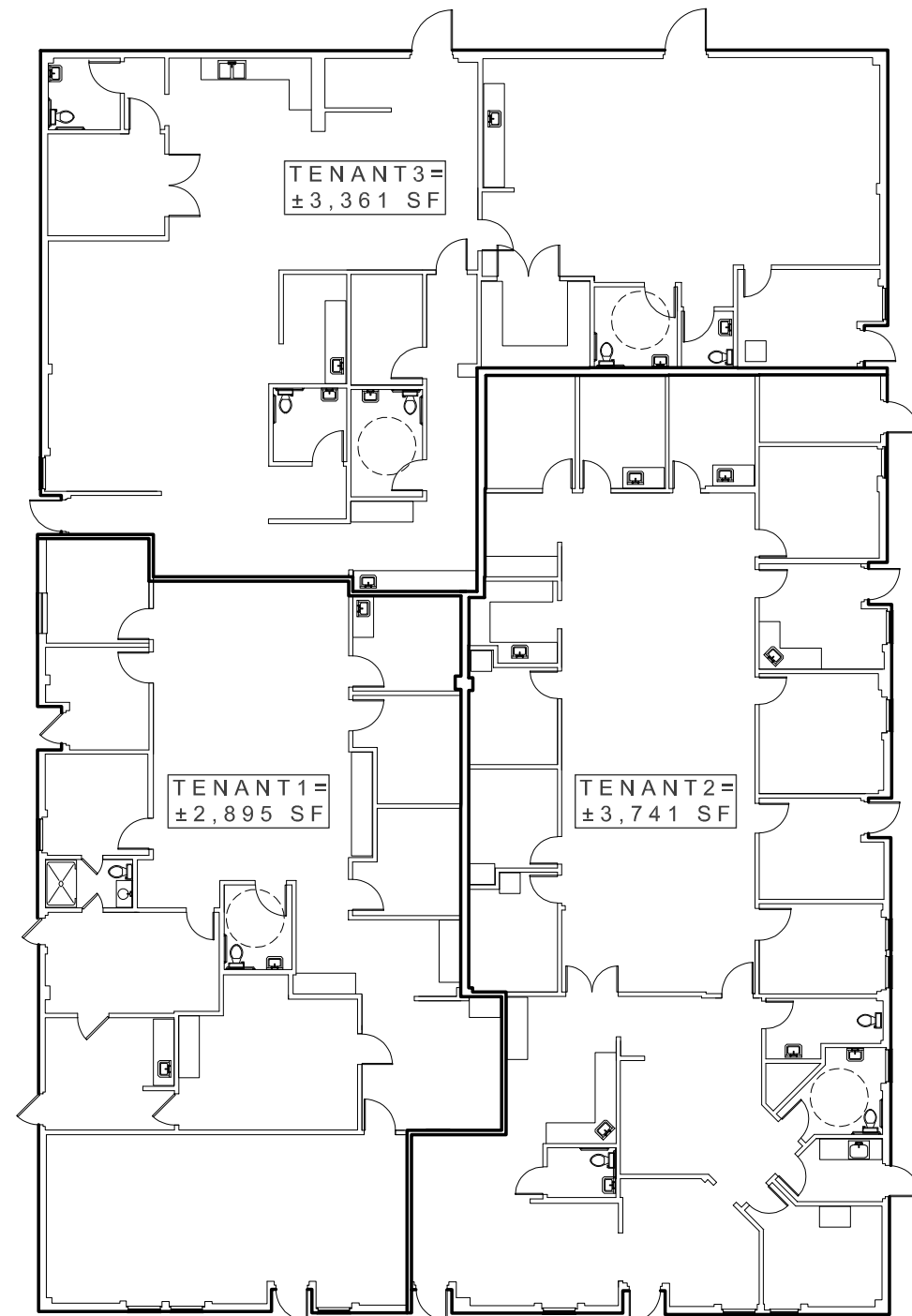


TWO TENANT

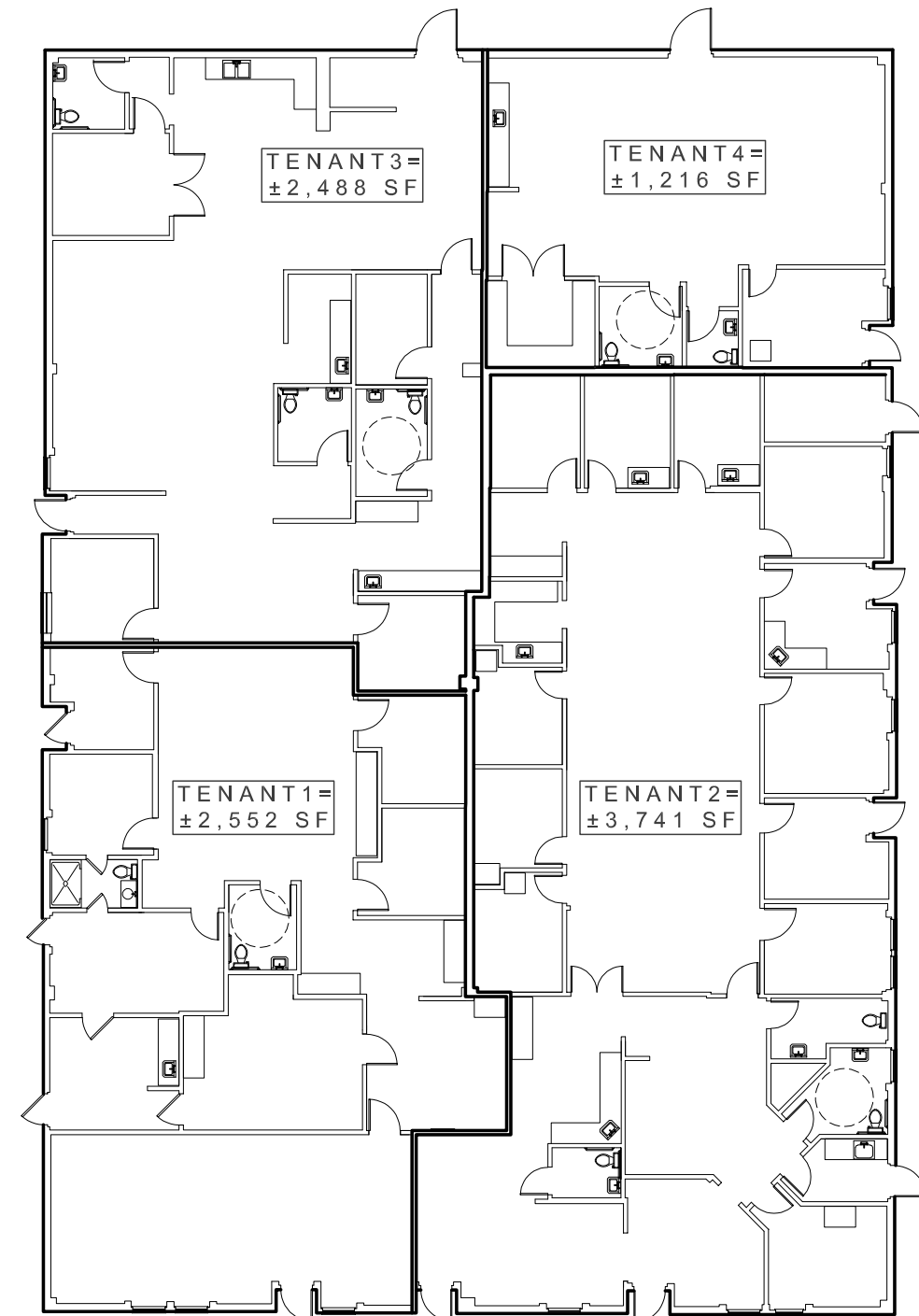


# 14 FARMFIELD AVENUE PROPOSED FLOORPLANS

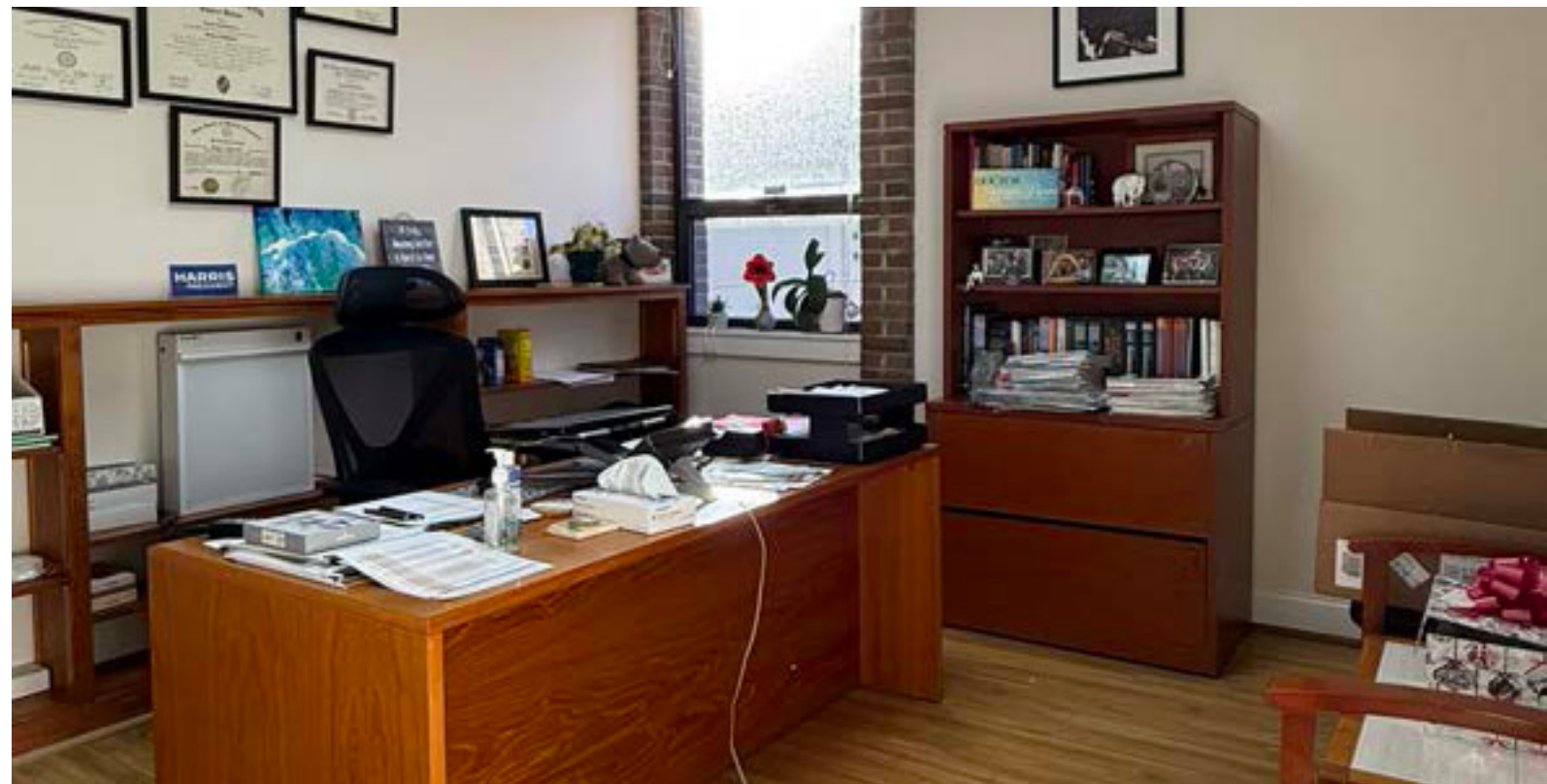
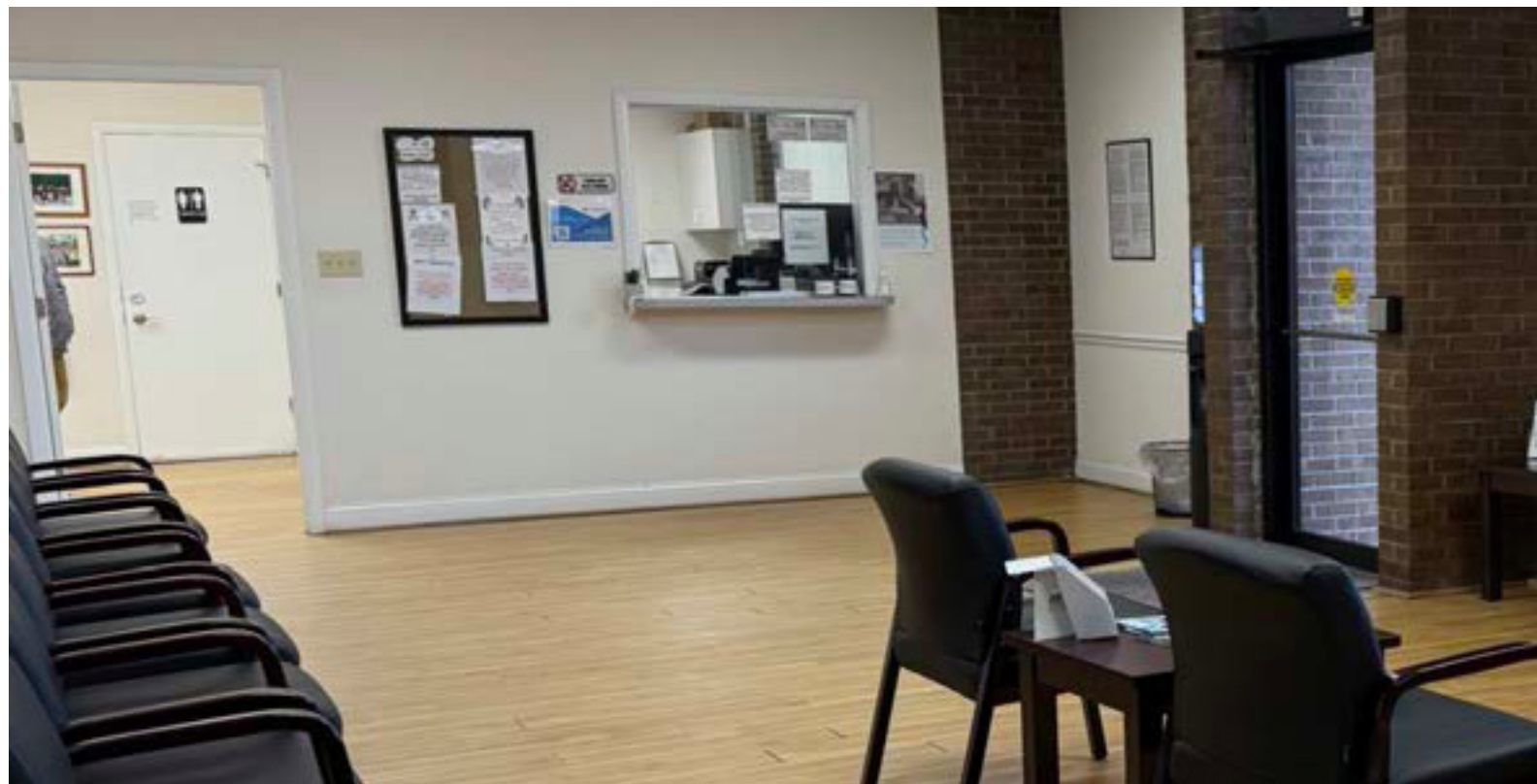
## THREE TENANT



## FOUR TENANT



# 14 FARMFIELD AVENUE INTERIOR PHOTOS



14 FARMFIELD AVENUE

# SURROUNDING TENANTS



Jule Kassiss Long, DMD  
Kassiss Long  
Family  
Dentistry  
556-7444

Physician's Plan  
WEIGHT LOSS + AESTHETICS + MED SPA + HRT  
CUTLER ANIMAL HOSPITAL

14 FARMFIELD AVENUE

ROPER  
ST. FRANCIS  
HEALTHCARE  
LEARNING CENTER

LOWCOUNTRY  
OB/GYN

LOWCOUNTRY  
PHYSICAL THERAPY ASSOCIATES

FARMFIELD AVE

W ASHLEY GREENWAY

# LOCATION OVERVIEW



**CAVA**



**14 FARMFIELD AVENUE**  
MEDICAL OFFICE FOR LEASE

SAVANNAH HWY

FARMFIELD AVE

W ASHLEY GREENWAY

14 FARMFIELD AVENUE

# NEARBY HOSPITALS



**NORTH CHARLESTON**

**ROPER  
ST. FRANCIS  
HEALTHCARE**

**ROPER  
ST. FRANCIS  
HEALTHCARE**

**WEST ASHLEY**

**14 FARMFIELD AVENUE**  
MEDICAL OFFICE FOR LEASE

**DOWNTOWN CHARLESTON**

**ROPER  
ST. FRANCIS  
HEALTHCARE**

**MUSC Health**  
Medical University of South Carolina



MEDICAL OFFICE FOR LEASE

# 14 FARMFIELD AVENUE

CHARLESTON, SC 29407

**MATT JOHNSON**

Associate

+1985 237 2580

[matt.johnson@bridge-commercial.com](mailto:matt.johnson@bridge-commercial.com)

**PETER FENNELLY**

President

+1 843 435 0186

[peter.fennelly@bridge-commercial.com](mailto:peter.fennelly@bridge-commercial.com)

