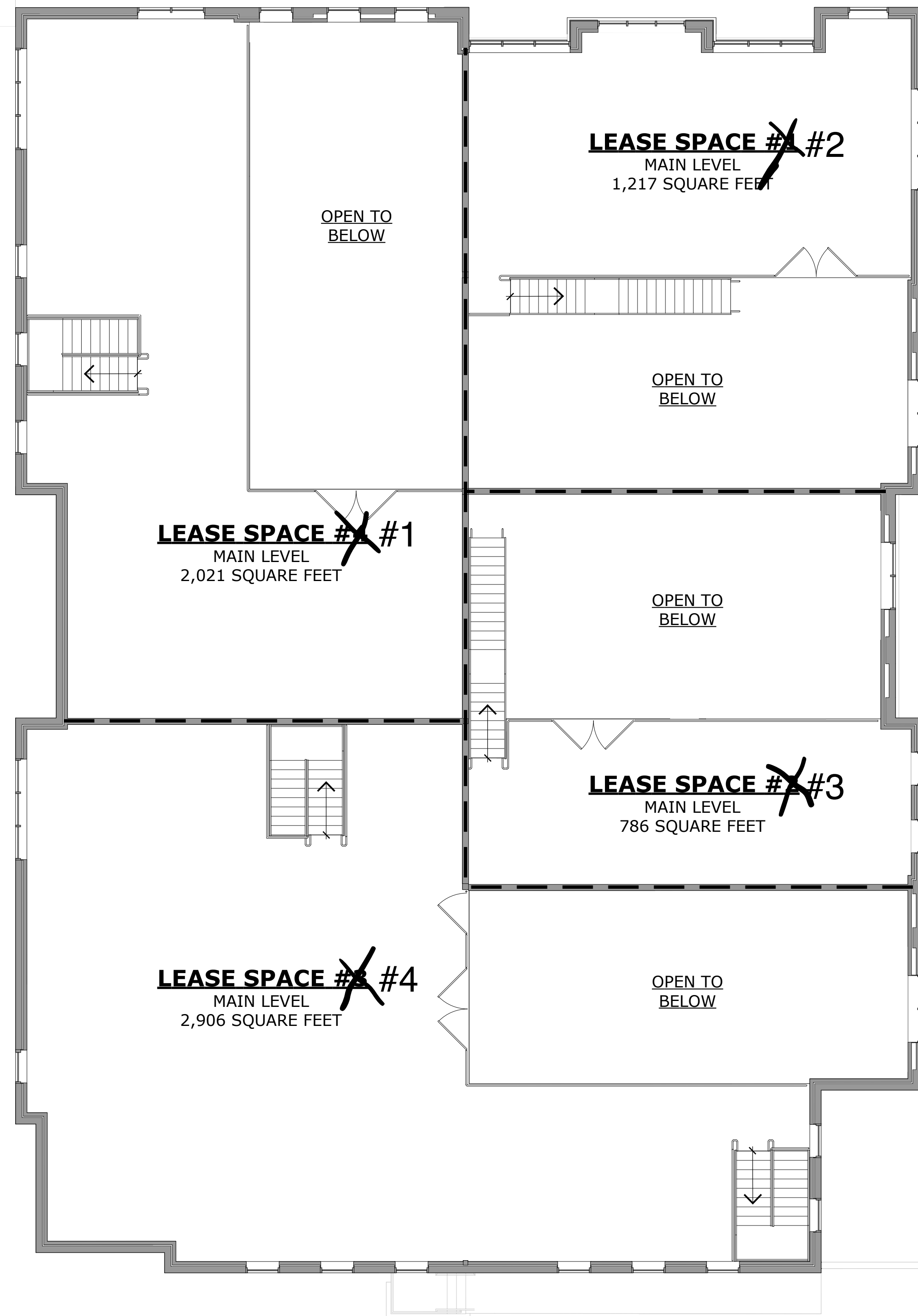
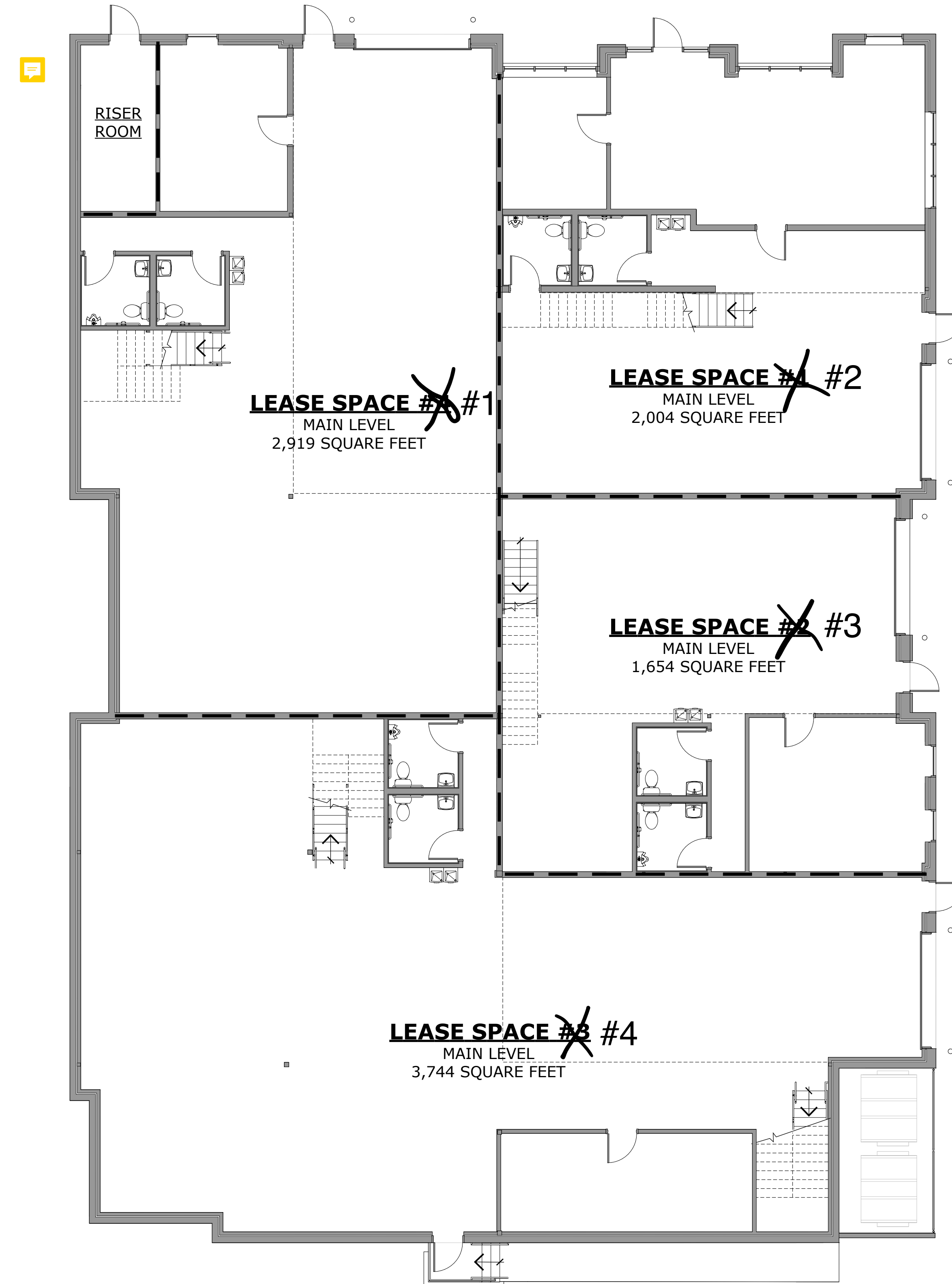


Building 661



2 UPPER LEVEL FLOOR PLAN - WEST BLDG.



1 MAIN LEVEL FLOOR PLAN - WEST BLDG.

LEASE SPACE #1 #2
 MAIN LEVEL 2,004 SQ. FT.
 UPPER LEVEL 1,217 SQ. FT.

TOTAL AREA 3,221 SQ. FT.

LEASE SPACE #2 #3
 MAIN LEVEL 1,654 SQ. FT.
 UPPER LEVEL 786 SQ. FT.

TOTAL AREA 2,440 SQ. FT.

LEASE SPACE #3 #4
 MAIN LEVEL 3,744 SQ. FT.
 UPPER LEVEL 2,906 SQ. FT.

TOTAL AREA 6,650 SQ. FT.

LEASE SPACE #4 #1
 MAIN LEVEL 2,919 SQ. FT.
 UPPER LEVEL 2,021 SQ. FT.

TOTAL AREA 4,940 SQ. FT.