





AIRPORT EAST INDUSTRIAL PARK

14476 DUVAL PL W, JACKSONVILLE, FL 32218

 2,250 SF -
10,000 SF Units

 20' - 24' Clear
Height

 Grade Level
with shared
outdoor
loading dock

 3.5 Acres
Outside Storage

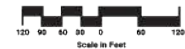
Warehousing - Distribution - Light Manufacturing - Wholesaling

AVAILABILITY

Building #	Unit #	Size (SF)
200	206	5,000
400	404/405	10,000
400	406	5,000
700	703	5,250
700	707	5,000

PROPERTY HIGHLIGHTS

- 2,250 SF - 10,000 SF units
- 20' - 24' clear height
- Grade level loading
- Shared outdoor Loading Docks
- 3.5± Acres for Outside Storage
- Ample parking on site
- Wet Sprinkler System
- Monument Signage
- Fluorescent Lighting
- 200a/120-208v



BUILDING 200 | UNIT 206 | 5,000 SF

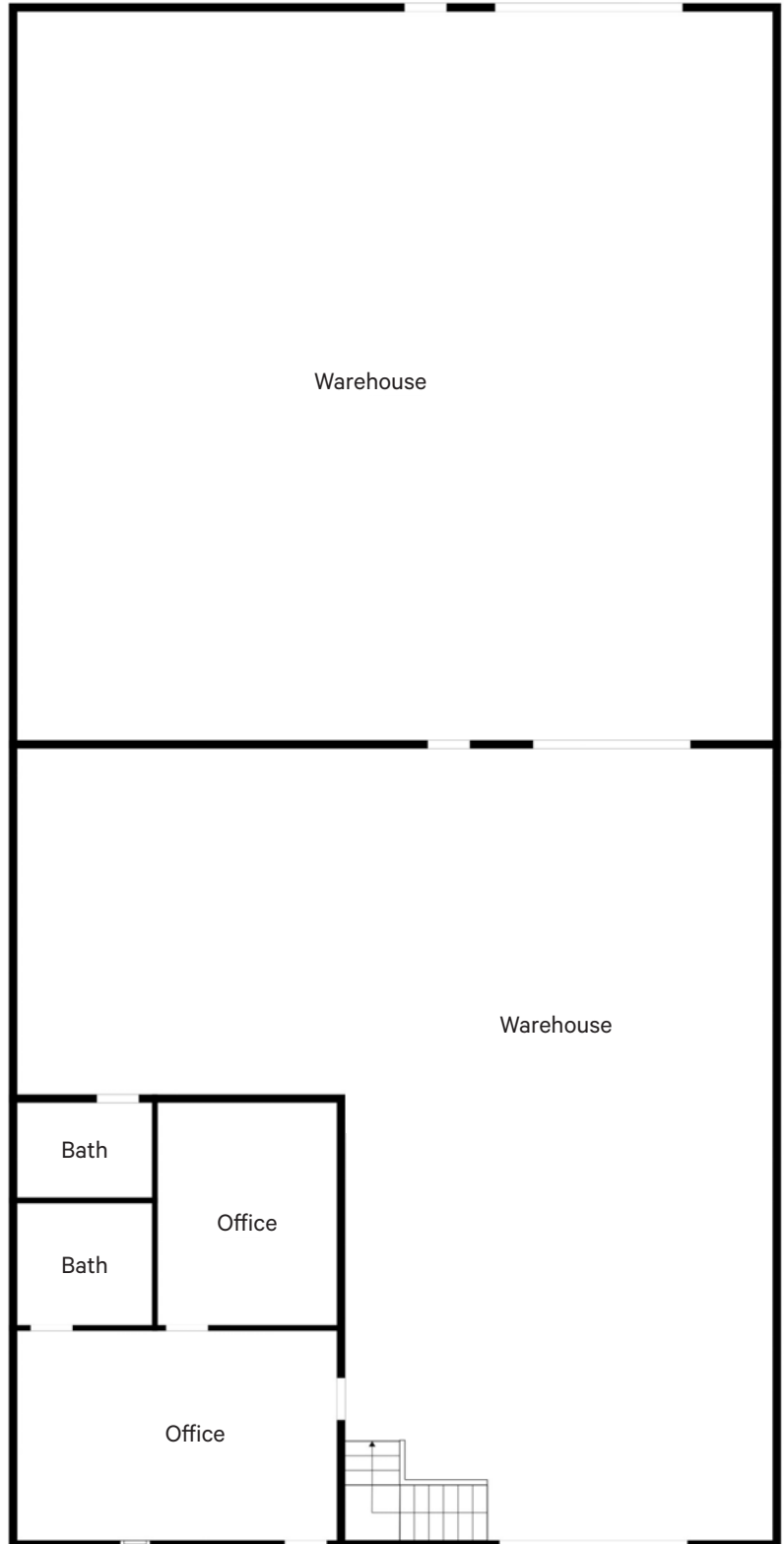
Specifications

Warehouse: ±4,470 SF

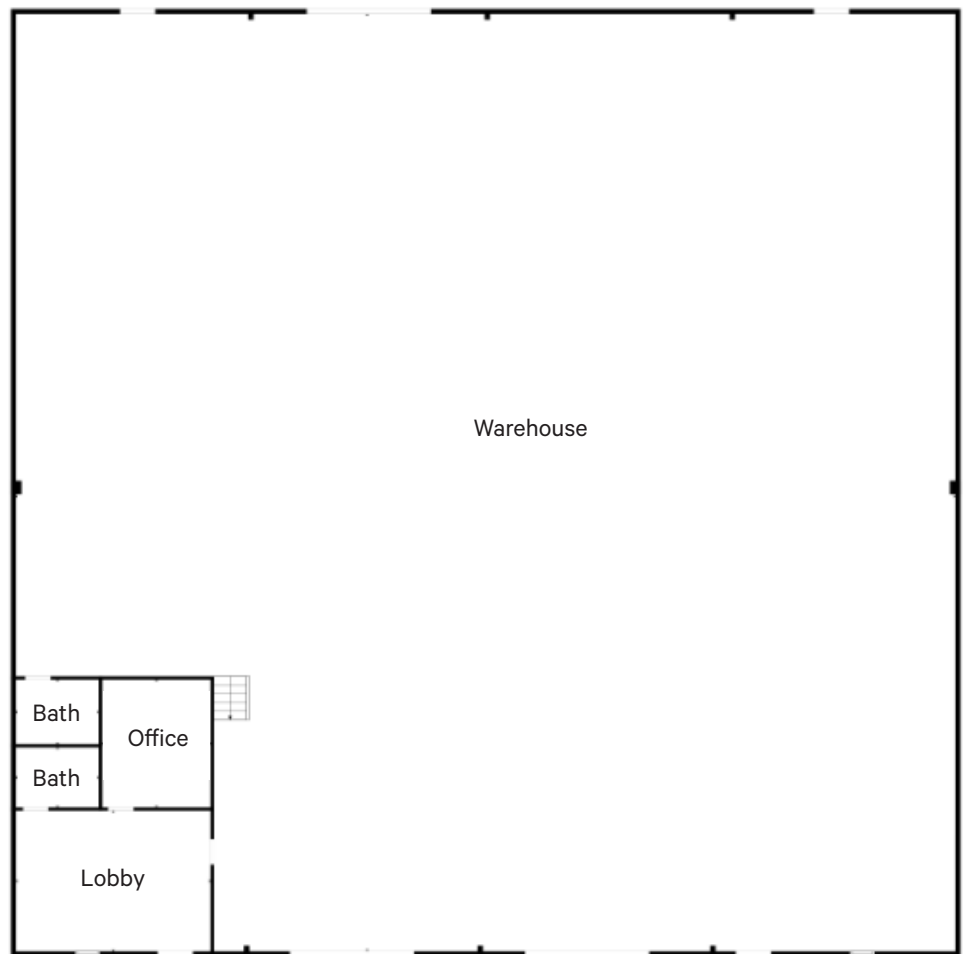
Office: ±530 SF

Loading: 2 Roll-up Doors (11x14)

Power: 200a/120-208v



BUILDING 400 | UNIT 404/405 | 10,000 SF



Specifications

Warehouse: ±9,470 SF

Office: ±530 SF

Loading: 3 Roll-up Doors
(11x14)

Power: 200a/120-208v

BUILDING 400 | UNIT 406 | 5,000 SF

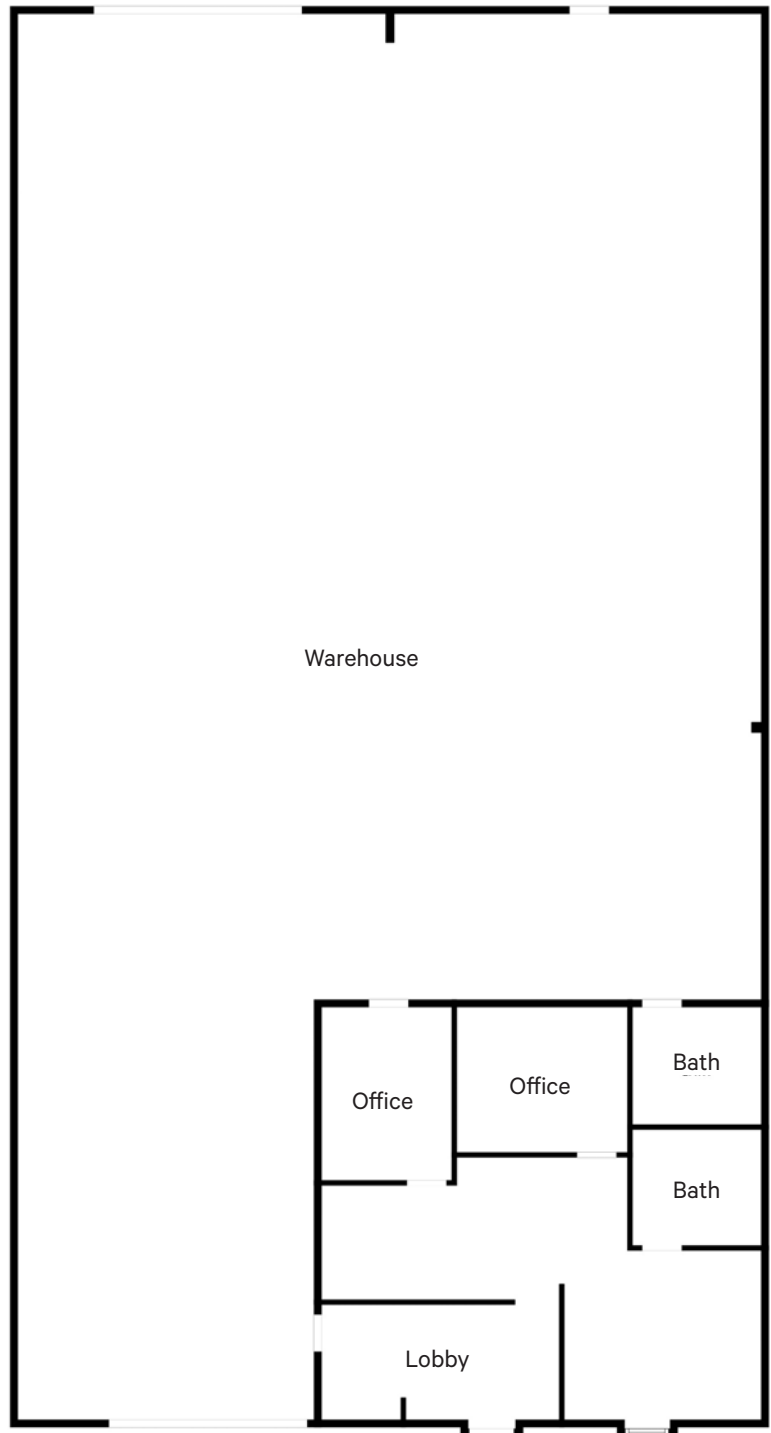
Specifications

Warehouse: ±4,150 SF

Office: ±850 SF

Loading: 2 Roll-up Doors
(11x14)

Power: 200a/120-208v



BUILDING 700 | UNIT 703 | 5,250 SF

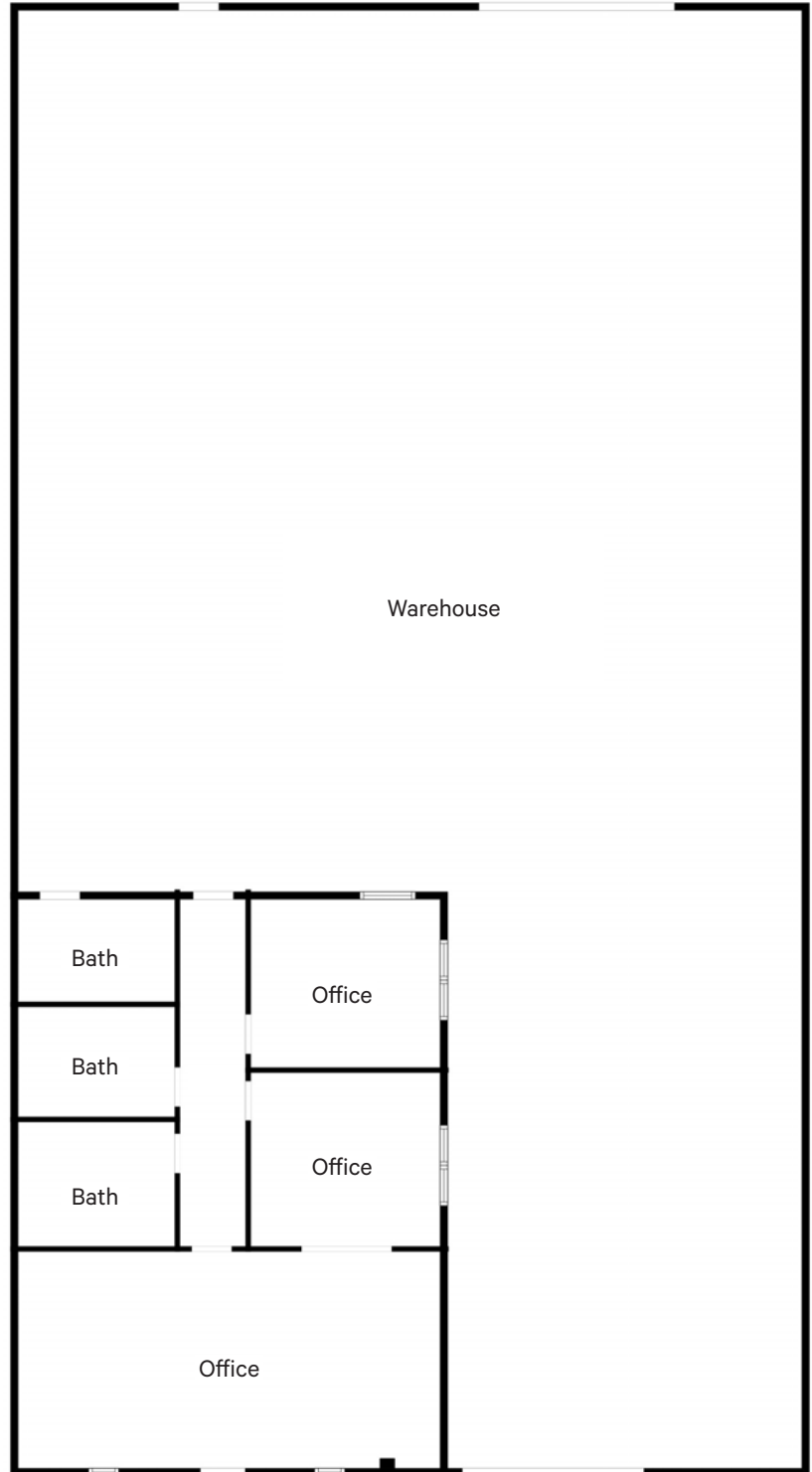
Specifications

Warehouse: ±4,350 SF

Office: ±900 SF

Loading: 2 Roll-up Doors
(11x14)

Power: 200a/120-208v



BUILDING 700 | UNIT 707 | 5,000 SF

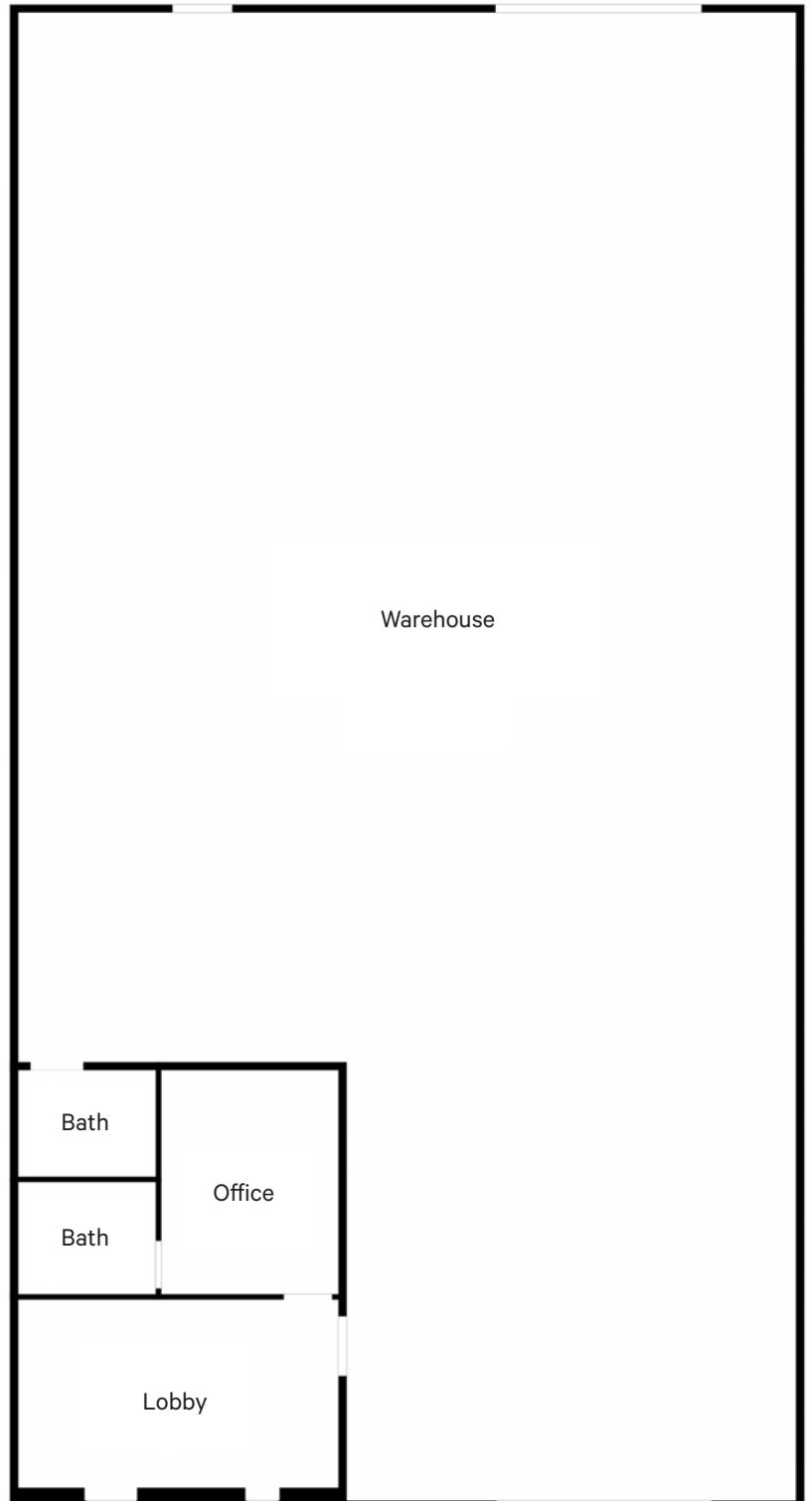
Specifications

Warehouse: ±4,470 SF

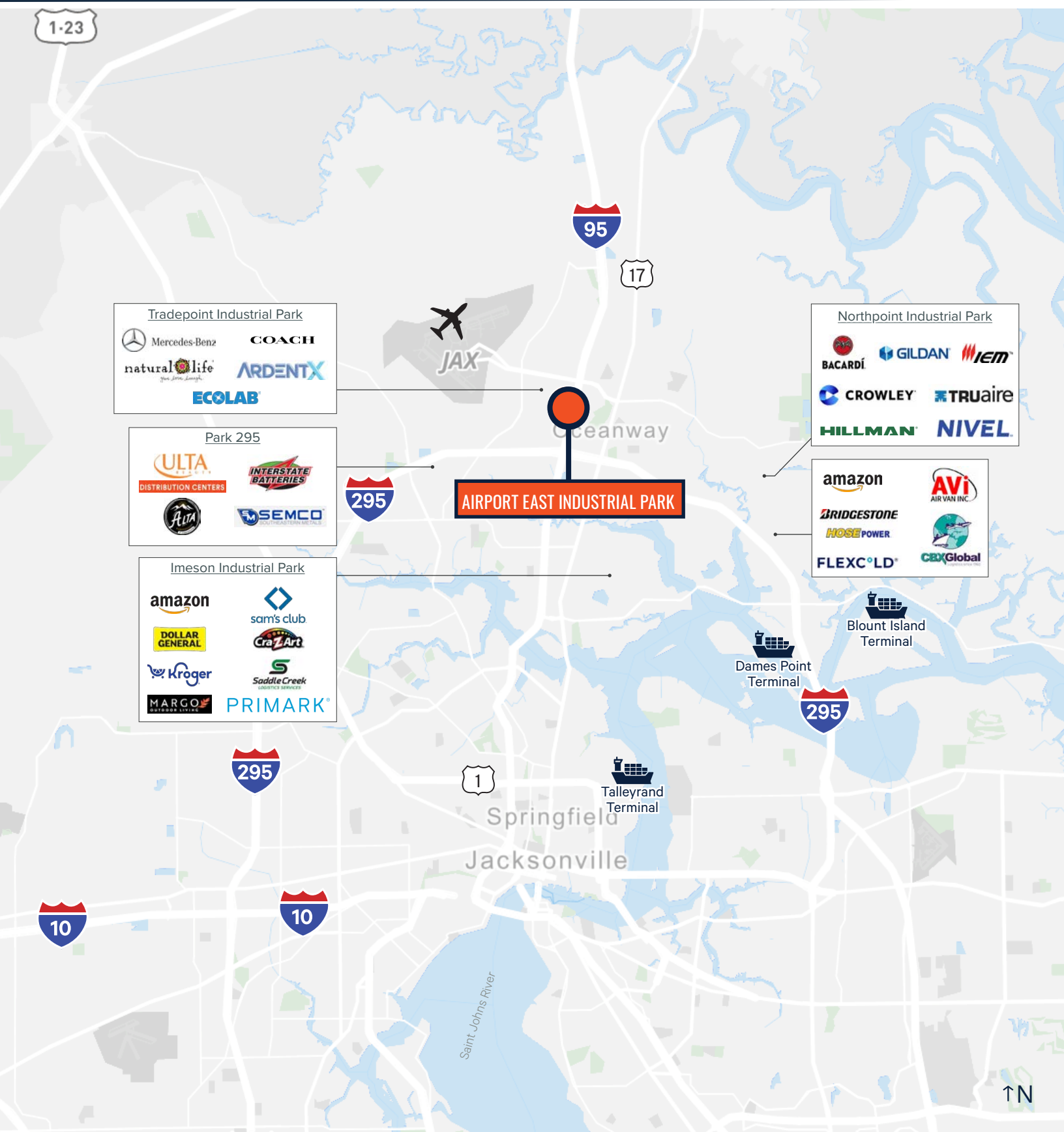
Office: ±530 SF

Loading: 2 Roll-up Doors
(11x14)

Power: 200a/120-208v

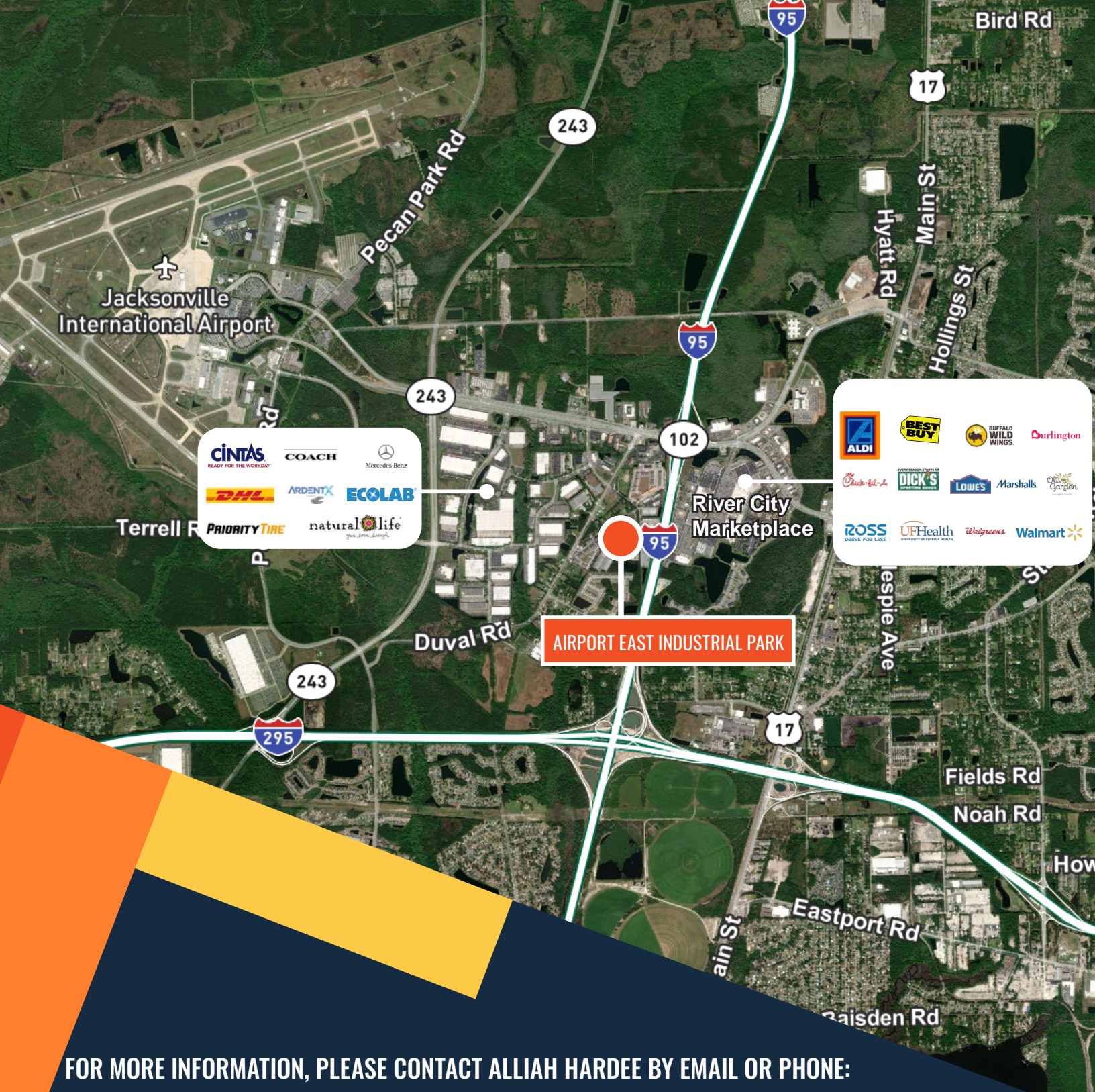


Position business for success at Airport East Industrial Park, a premier eight-building industrial park within Jacksonville's thriving Northside submarket. Spanning 230,000 SF of versatile space across 29 fenced and gated acres, this well-maintained property delivers the ideal foundation for industrial, logistics, and light manufacturing operations.



PROPERTY PHOTOS





AIRPORT EAST INDUSTRIAL PARK

**FOR MORE INFORMATION, PLEASE CONTACT ALLIAH HARDEE BY EMAIL OR PHONE:
 ALLIAH.HARDEE@CBRE.COM +1 904 814 9961**

Kyle Fisher
 First Vice President

Kyle Murphy
 Associate

Alliah Hardee
 Associate

© 2026 CBRE, Inc. All rights reserved. This information has been obtained from sources believed reliable, but has not been verified for accuracy or completeness. You should conduct a careful, independent investigation of the property and verify all information. Any reliance on this information is solely at your own risk. CBRE and the CBRE logo are service marks of CBRE, Inc. All other marks displayed on this document are the property of their respective owners, and the use of such logos does not imply any affiliation with or endorsement of CBRE. Photos herein are the property of their respective owners. Use of these images without the express written consent of the owner is prohibited.