



For Sublease

2560 Jason Court | Oceanside, CA

±7,168 SF Freestanding Industrial Building



For Sublease

2560 Jason Court
Oceanside, CA 92056

* *Freestanding Industrial Building in Oceanside's Bristol Business Park*

Property Specifications

BUILDING SIZE

±7,168 SF

LOT SIZE

.54 acres

AVAILABLE

Now

PARKING

2/1,000

SUBLEASE RATE

\$1.00/SF
(gross)

ZONING

IL (Oceanside)

HANK JENKINS CA License No. 01981328
602.882.0138 | hank.jenkins@srsre.com

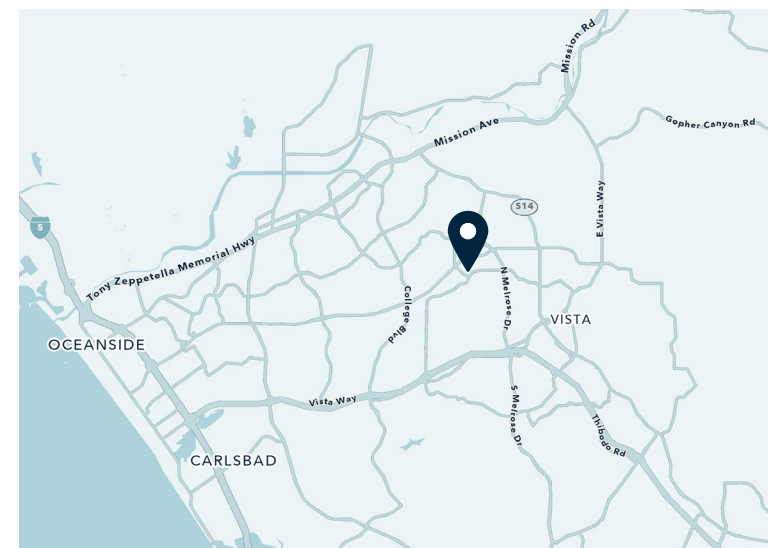
TUCKER HOHENSTEIN CA License No. 00999360
858.336.4104 | tucker.hohenstein@srsre.com

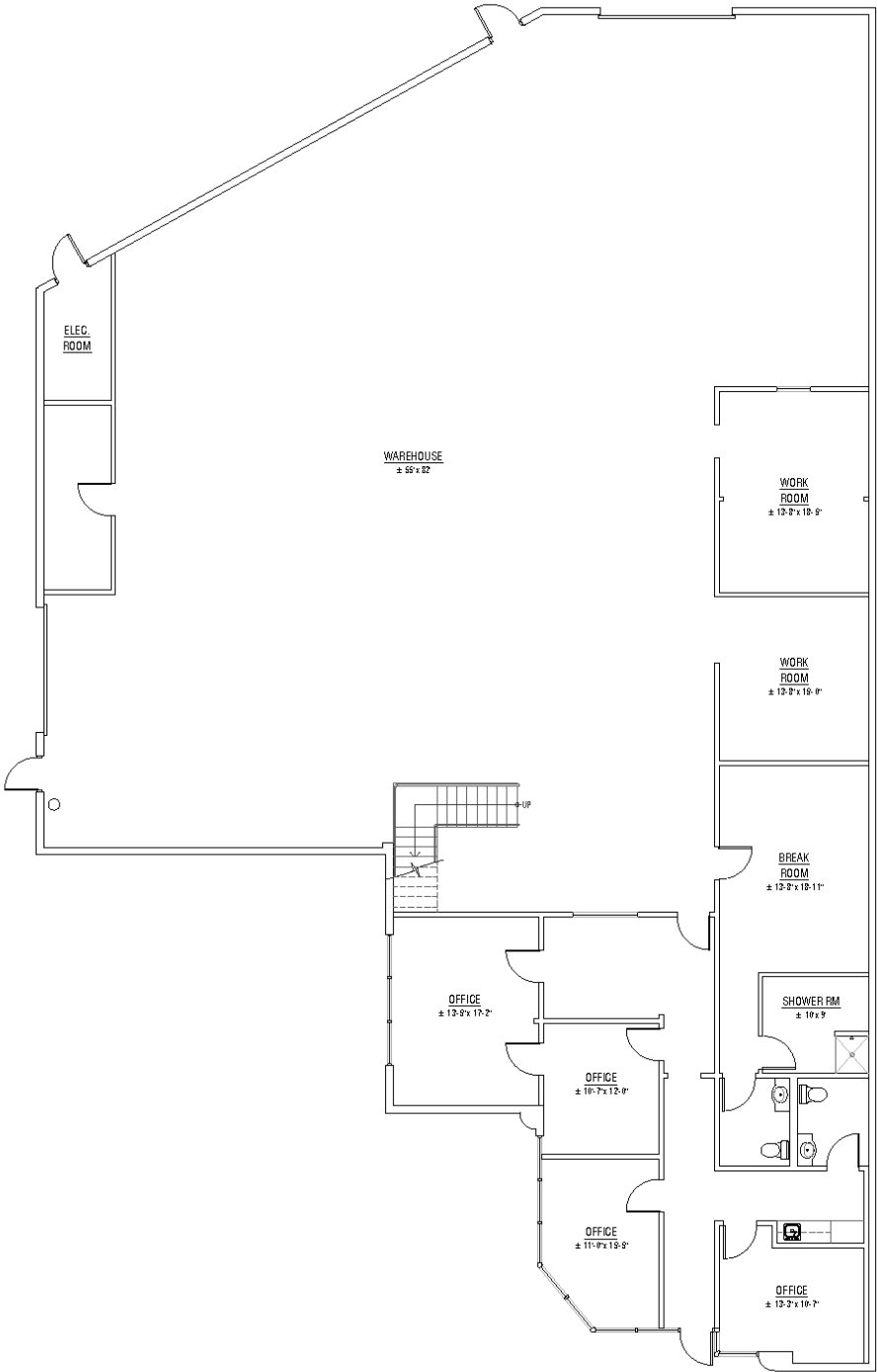
MIKE ERWIN CA License No. 01242826
760.807.0909 | mike.erwin@srsre.com



Property Features

- ±7,168 SF freestanding industrial building
- Available for immediate occupancy
- Two (2) grade-level loading doors
- ±18' clear warehouse height
- ±30% office; flexible office configuration
- 120/208V, 3-phase power
- Parking ratio: 2/1,000 SF
- Functional warehouse/distribution layout
- Convenient access to I-5 and SR-78
- Sublease through 8/31/2027
- Contact broker to schedule tour







SRS REAL ESTATE PARTNERS

215 Highway 101, Suite 209
Solana Beach, CA 92075

Hank Jenkins

Vice President

602.882.0138

hank.jenkins@srsre.com

Tucker Hohenstein, SIOR

Executive Vice President

858.336.4104

tucker.hohenstein@srsre.com

Mike Erwin

Executive Vice President

760.807.0909

mike.erwin@srsre.com

[SRSRE.COM/Industrial](https://www.srsre.com/Industrial)

©2026 SRS. All Rights Reserved.

The information presented was obtained from sources deemed reliable;
however SRS does not guarantee its completeness or accuracy.