



# 1001 S Elm Street

South of Downtown Greensboro

## FOR SALE

±17,280 SF



### Property Details

Type	Historic Industrial
Size	±17,280 SF plus 960 SF basement
Price	\$400,000

### Description

- Historic industrial property built in 1920 ready for redevelopment on the south side of Downtown Greensboro, NC
- 0.28 acres with side alley and rear yard
- ±17,280 SF plus ±960 SF basement



Pricing and figures shown are deemed to be reliable, but no representations or warranties are being made to the accuracy and is subject to errors and omissions, and changes of price or terms. Buyer or Tenant should verify all information.

**Micah O'Hare**

micah@gborocp.com  
336.279.0778  
www.gborocp.com



Click to watch  
property video!



**GREENSBORO**  
COMMERCIAL PROPERTIES

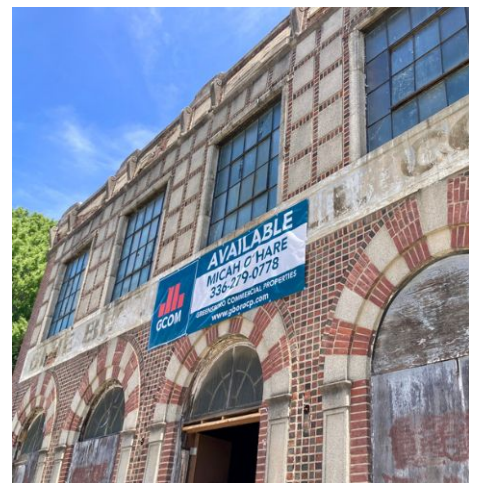
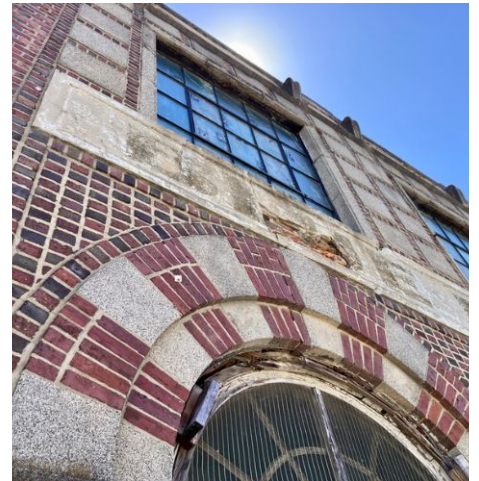
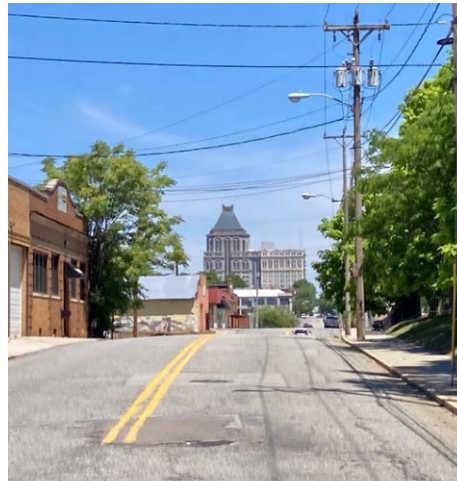


# 1001 S Elm Street

South of Downtown Greensboro

# FOR SALE

±17,280 SF



Pricing and figures shown are deemed to be reliable, but no representations or warranties are being made to the accuracy and is subject to errors and omissions, and changes of price or terms. Buyer or Tenant should verify all information.

## Micah O'Hare

micah@gborocp.com  
336.279.0778  
www.gborocp.com



Click to watch  
property video!



**GREENSBORO**  
COMMERCIAL PROPERTIES



# 1001 S Elm Street

South of Downtown Greensboro

# FOR SALE

±17,280 SF



Pricing and figures shown are deemed to be reliable, but no representations or warranties are being made to the accuracy and is subject to errors and omissions, and changes of price or terms. Buyer or Tenant should verify all information.

**Micah O'Hare**

[micah@gborocp.com](mailto:micah@gborocp.com)

336.279.0778

[www.gborocp.com](http://www.gborocp.com)



Click to watch  
property video!



**GREENSBORO**  
COMMERCIAL PROPERTIES

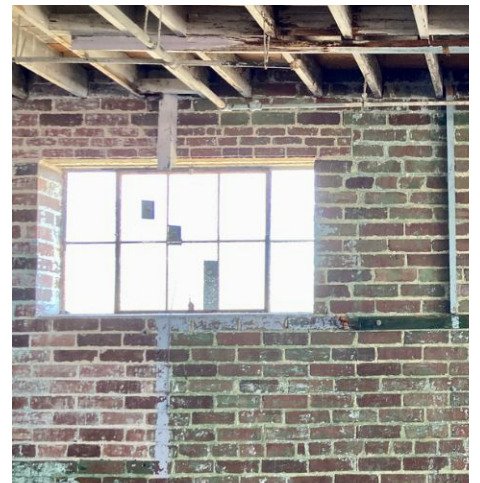
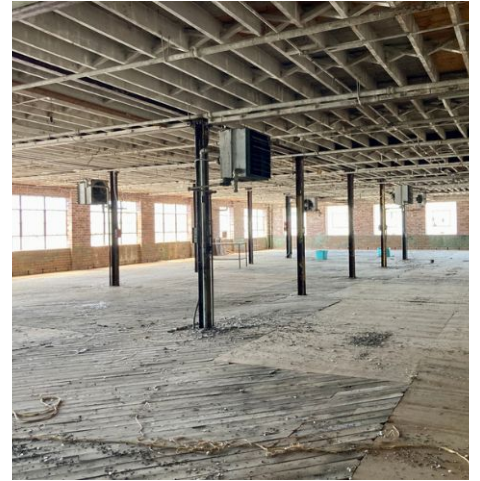


# 1001 S Elm Street

South of Downtown Greensboro

# FOR SALE

±17,280 SF



Pricing and figures shown are deemed to be reliable, but no representations or warranties are being made to the accuracy and is subject to errors and omissions, and changes of price or terms. Buyer or Tenant should verify all information.

**Micah O'Hare**

[micah@gborocp.com](mailto:micah@gborocp.com)

336.279.0778

[www.gborocp.com](http://www.gborocp.com)



Click to watch  
property video!



**GREENSBORO**  
COMMERCIAL PROPERTIES