



## HIGHLY VISIBLE RETAIL AND OFFICE BUILDING IN HONOLULU

RETAIL & OFFICE SPACE FOR LEASE

# NUUANU SQUARE

1365 Nu'uauu Ave & 23 S. Vineyard Blvd.  
Honolulu, HI 96817

[VISIT PROPERTY WEBSITE](#)

**NU'UANU SQUARE** is a 14,992 square foot retail and office building strategically located at the entrance to Downtown Honolulu. The center benefits from the high visibility of its location at the corner of a four way intersection with a delayed left turn. Immediately surrounded by 23,388 households, with 28,726 cars per day along S Vineyard Boulevard, Nu'uano Square is the perfect location for retail and office tenants alike.

**MAJOR TENANTS:**



**14,992 SF**  
TOTAL RENTABLE SIZE



**20,125 SF**  
TOTAL LAND AREA



**24**

CUSTOMER PARKING  
STALLS



**21**

RESERVED PARKING  
STALLS



**Second & Third**

FLOOR SECURED





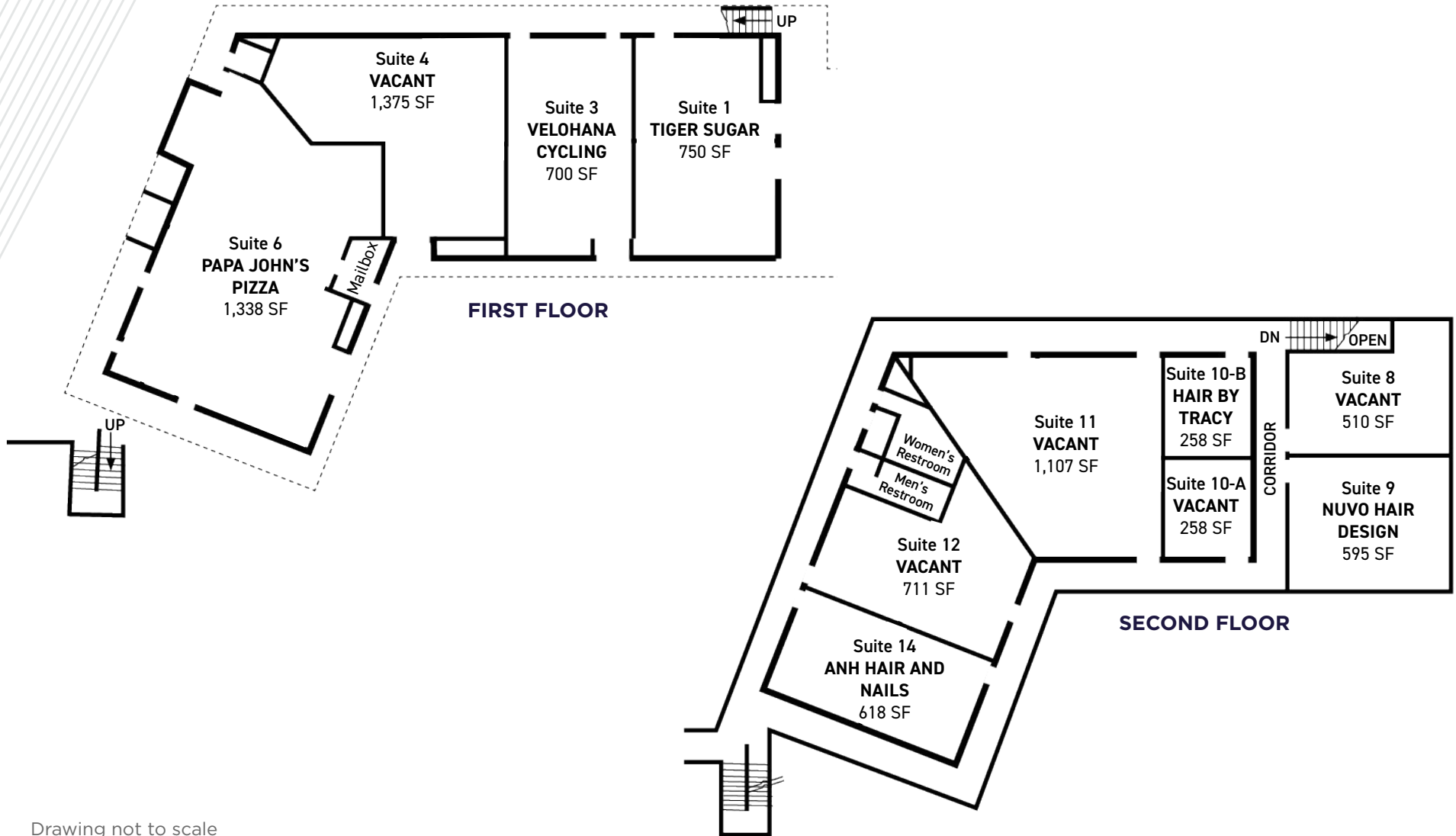
## PROPERTY DETAILS

<b>ADDRESS</b>	1365 Nu'uau Avenue Honolulu, HI 96817
<b>TMK</b>	(1) 2-1-004-028
<b>ZONING</b>	BMX-4
<b>BASE RENT</b>	\$1.50-\$3.00/SF/Mo
<b>TERM</b>	3-5 Years
<b>CAM</b>	\$1.45/SF/Mo (2026) Subject to Annual Adjustments
<b>PARKING</b>	
Reserved Stalls	\$180/Month (Includes HI GET)
Tandem Stalls	\$125/Month (Includes HI GET)



# Stacking Plan

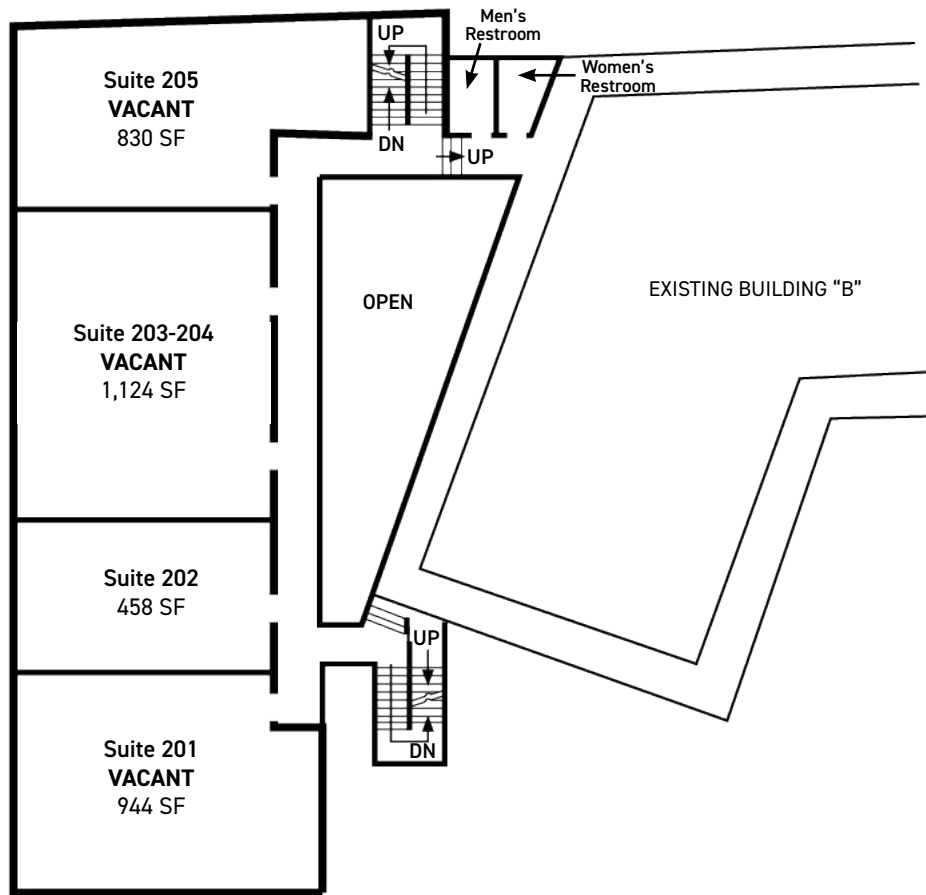
RETAIL BUILDING



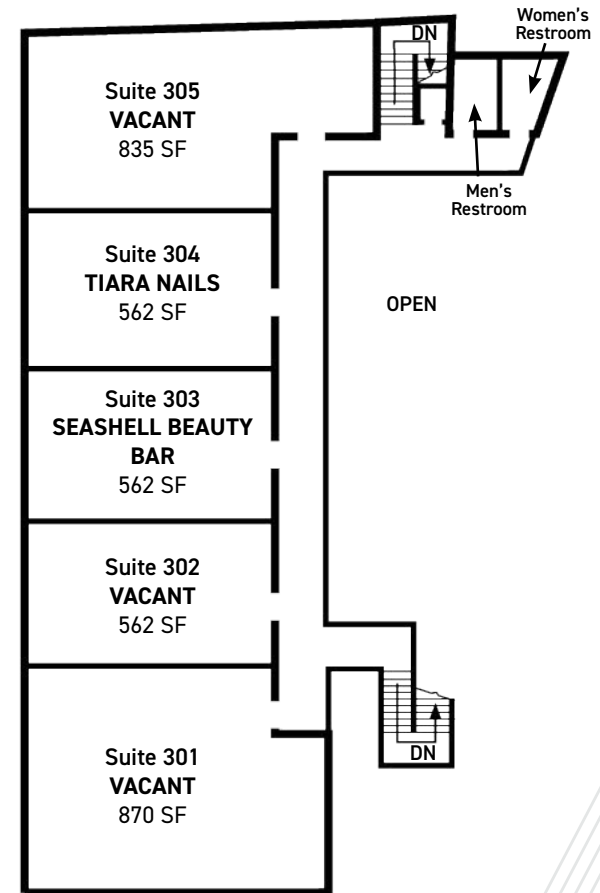
Drawing not to scale

# Stacking Plan

OFFICE BUILDING



SECOND FLOOR



THIRD FLOOR



**AVAILABLE SUITES**

**510 SF TO 1,400 SF**

**[CLICK FOR AVAILABILITIES](#)**



- H1 EAST ON RAMP
- H1 WEST ON RAMP
- H1 WEST OFF RAMP
- H1 EAST OFF RAMP

ALA MOANA

KAKAAKO

HONOLULU HARBOR

DOWNTOWN

NUUANU AVE

NUUANU SQUARE

VINEYARD BLVD

N SCHOOL ST

28,726 ADT



**Demographics  
3-Miles**

2022 Population	216,762
2022 Households	85,847
Avg HH Income	\$92,261



## CONTACT INFORMATION

### JOHN T. RANKIN (S)

Real Estate Advisor

+1 808 265 8715

[jrankin@chaneybrooks.com](mailto:jrankin@chaneybrooks.com)

RS-72384

### ROCK S. TANG (S) JD

Senior Vice President

+1 808 321 0029

[rtang@chaneybrooks.com](mailto:rtang@chaneybrooks.com)

RS-64894



**CUSHMAN &  
WAKEFIELD**

**ChaneyBrooks**

[cushmanwakefield.com](http://cushmanwakefield.com)

[chaneybrooks.com](http://chaneybrooks.com)

1440 Kapiolani Blvd., Suite 1010 | Honolulu, HI 96814 | Main +1 808 544 1600 | Fax +1 808 544 9574 | RB-17805

©2026 CUSHMAN & WAKEFIELD CHANEYBROOKS. NO WARRANTY OR REPRESENTATION, EXPRESS OR IMPLIED, IS MADE TO THE ACCURACY OR COMPLETENESS OF THE INFORMATION CONTAINED HEREIN, AND SAME IS SUBMITTED SUBJECT TO ERRORS, OMISSIONS, CHANGE OF PRICE, RENTAL OR OTHER CONDITIONS, WITHDRAWAL WITHOUT NOTICE, AND TO ANY SPECIAL LISTING CONDITIONS IMPOSED BY THE PROPERTY OWNER(S). AS APPLICABLE, WE MAKE NO REPRESENTATION AS TO THE CONDITION OF THE PROPERTY (OR PROPERTIES) IN QUESTION.